

ELECTRICAL SCOPE OF WORK:
 THE CONTRACTOR IS ASSUMED TO BE OF MASTER ELECTRICIAN EXPERIENCE AND SHALL PROVIDE ANY APPLICABLE SINGLE LINE DIAGRAMS, PANEL SCHEDULES AND CIRCUIT PLAN DESIGNS REQUIRED TO PROVIDE A COMPLETE AND FUNCTIONING ELECTRICAL SYSTEM. THIS PRICE SHALL BE INCLUDED IN THE CONTRACTORS BASE BID PRICE. NO CLAIM FOR EXTRA PAYMENT WILL BE ALLOWED FOR FAILURE TO INCLUDE THIS COST INTO THE BASE BID. BIDDERS SHALL ACCEPT SOLE RESPONSIBILITY FOR ANY ERROR OR NEGLECT IN PRICING THE ABOVE ITEMS IN THERE BID.

NOTE:
 CONTRACTOR TO CONFIRM ALL SPRINKLER ZONES WITH SPRINKLER SCHEDULES AND CIRCUIT PLAN DESIGNS REQUIRED TO PROVIDE A COMPLETE AND FUNCTIONING ELECTRICAL SYSTEM. THIS PRICE SHALL BE INCLUDED IN THE CONTRACTORS BASE BID PRICE. NO CLAIM FOR EXTRA PAYMENT WILL BE ALLOWED FOR FAILURE TO INCLUDE THIS COST INTO THE BASE BID. BIDDERS SHALL ACCEPT SOLE RESPONSIBILITY FOR ANY ERROR OR NEGLECT IN PRICING THE ABOVE ITEMS IN THERE BID.

NOTE:
 INSTALL OR EXTEND THE BUILDING FIRE ALARM SYSTEM IN CONFORMANCE WITH O.B.C. 212 3.2.4. AND CAN/ULC-S524-6.

NOTE:
 CONTRACTOR TO COORDINATE ANY ADDITIONAL LIGHTING, RECEPTACLE AND COMMUNICATION OUTLET REQUIREMENTS WITH CLIENT PRIOR TO COMMENCEMENT OF WORK.

NOTE:
 FIRE ALARM VERIFICATION SHALL INCLUDE AUDIBILITY LEVELS THROUGHOUT THE BUILDING.

NOTE:
 ELECTRICAL CONDUCTORS ASSOCIATED WITH FIRE ALARM SYSTEM AND EMERGENCY EQUIPMENT SHALL CONFORM TO OBC 3.2.7.10

NOTE:
 VOICE AND DATA OUTLETS ARE SHOWN FOR SCOPE OF WORK PURPOSES ONLY. CONTRACTOR TO COORDINATE EXACT LOCATIONS WITH OWNER PRIOR TO ORDERING AND INSTALLATION OF EQUIPMENT.

NOTE:
 TENDERING OF THESE DOCUMENTS IS DONE UNDER THE MUTUAL UNDERSTANDING THAT ALL CONTRACTORS ARE EXPERIENCED AND LICENSED IN THE WORKS BEING PROVIDED AND THAT ALL COMPONENTS OF A FULLY FUNCTIONING SYSTEM WILL BE INCLUDED WHETHER SHOWN OR NOT SHOWN BUT IMPLIED FOR A COMPLETE SYSTEM.

NOTE:
 CONTRACTOR TO COORDINATE ELEVATOR ELECTRICAL REQUIREMENTS WITH ELEVATOR MANUFACTURER PRIOR TO ORDERING EQUIPMENT. ELEVATOR MANUFACTURERS DRAWINGS SUPERSEDE THESE DRAWINGS.

FIRE ALARM LEGEND	
	SMOKE DETECTOR
	FIRE ALARM STROBE (SUITE)
	FIRE ALARM COMBINATION HORN/STROBE (CORRIDOR)
	FIRE ALARM HORN (SUITE)
	FIRE ALARM HORN (CORRIDOR)
	HEAT DETECTOR
	FIRE ALARM PULL STATION
	FIRE ALARM CONTROL PANEL
	COMBINATION SMOKE ALARM AND CARBON MONOXIDE DETECTOR INTERCONNECTED WHEN MORE THAN ONE PER UNIT C/W BATTERY BACKUP AND VISUAL SIGNALING COMPONENT - SUITES
	SMOKE ALARM INTERCONNECTED WHEN MORE THAN ONE PER UNIT C/W BATTERY BACKUP AND VISUAL SIGNALING COMPONENT - SUITES
	SUPERVISOR VALVE
	SPRINKLER FLOW SWITCH
	DUCT SMOKE DETECTOR

POWER LEGEND	
	RECEPTACLE
	IN-FLOOR RECEPTACLE
	240V 1PH GROUNDED RECEPTACLE
	120V POWER SUPPLY
	208V POWER SUPPLY
	575V 3PH GROUNDED DIRECT EQUIPMENT CONNECTION
	ELECTRICAL DISCONNECT
	WALL MOUNTED TELEVISION (CABLE) OUTLET
	VOICE AND DATA COMBO OUTLET BOX - WALL BOX, OUTLET & 3/4" CONDUIT C/W PULL STRING UP WALL TO SOURCE
	VOICE ONLY OUTLET BOX - WALL BOX, OUTLET & 3/4" CONDUIT C/W PULL STRING UP WALL TO SOURCE
	DATA ONLY OUTLET BOX - WALL BOX, OUTLET & 3/4" CONDUIT C/W PULL STRING UP WALL TO SOURCE
	PUSHBUTTON FOR POWER DOOR OPERATOR
	ELECTRICAL PANEL
	GFI RATED RECEPTACLE
	WEATHERPROOF
	EQUIPMENT/FIXTURE TAG

NO.	REVISION	DATE	BY	APPROVED
5	ISSUED FOR PRICING	05/22	G.O	G.V.W.O
4	RE-ISSUED FOR PERMIT	05/05	G.O	G.V.W.O
3	ISSUED FOR PERMIT	03/30	G.O	G.V.W.O
2	RE- ISSUED FOR COORDINATION	03/20	G.O	G.V.W.O
1	ISSUED FOR COORDINATION	01/24	G.O	G.V.W.O

REVISIONS

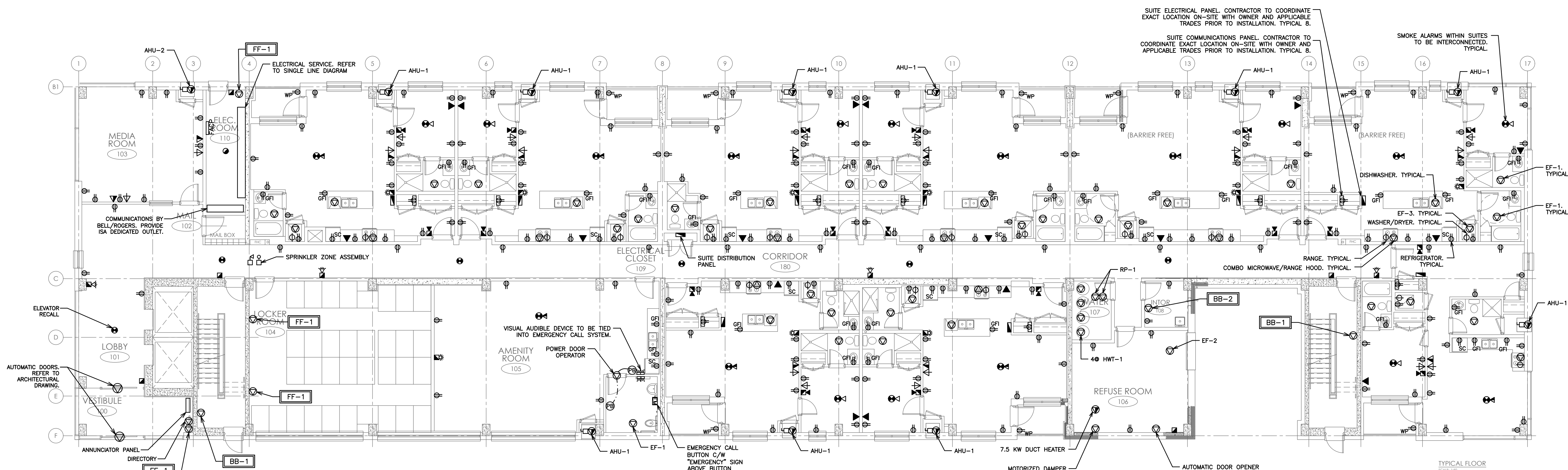
513 DUNDAS STREET EAST, WHITBY, ONTARIO
 KIYA DEVELOPMENTS LTD.

ELECTRICAL POWER PARKING LEVEL

D.G. Biddle & Associates Limited
consulting engineers and planners

96 KING STREET EAST • OSHAWA, ON L1H 1B6
 PHONE (905)576-8500 • FAX (905)576-9730
 INFO@DGBIDDLE.COM

SCALE: 1:125	PROJECT NO. 116194
DRAWN BY: J.E.C	DRAWING NO. E1.1
DESIGN BY: J.E.C/G.V.W.O	
CHECKED BY: G.V.W.O	CAD FILE: 116194_M2
DATE: MAY 2020	PLOT DATE: 05/22/20
	SUBMISSION: PRICING



NOTE:
ELECTRICAL CONTRACTOR TO PREPARE LAYOUT SHOP DRAWINGS OF MECHANICAL AND ELECTRICAL ROOMS INDICATING ALL ELECTRICAL EQUIPMENT & MOUNTING HEIGHTS TO ENSURE SPACE REQUIREMENTS ARE ADEQUATE. REPORT ANY CONFLICTS TO ENGINEER PRIOR TO ORDERING EQUIPMENT. ALL CLEARANCES MUST COMPLY WITH LOCAL HYDRO REQUIREMENTS AND ELECTRICAL SAFETY AUTHORITIES.

NOTE:
ALL DATA, TELEPHONE AND TV OUTLETS SHOWN ARE FOR SCOPE OF WORK PURPOSES ONLY. CONTRACTOR TO COORDINATE EXACT LOCATIONS AND QUANTITIES OF ALL DATA, TELEPHONE AND TV OUTLETS ON-SITE WITH OWNER PRIOR TO COMMENCEMENT OF WORK.

NOTE:
1. SMOKE ALARMS SHALL BE INSTALLED WITH PERMANENT CONNECTION TO AN ELECTRICAL CIRCUIT.
2. NO DISCONNECT SWITCH BETWEEN SMOKE ALARM AND CIRCUIT BREAKER.
3. SMOKE ALARMS TO HAVE BATTERY BACKUP.
4. PROVIDE A CARBON MONOXIDE (CO) ALARM IN EACH SUITE NEAR A BEDROOM.

NOTE:
TENDERING OF THESE DOCUMENTS IS DONE UNDER THE MUTUAL UNDERSTANDING THAT ALL CONTRACTORS ARE EXPERIENCED AND LICENSED IN THE WORKS BEING PROVIDED AND THAT ALL COMPONENTS OF A FULLY FUNCTIONING SYSTEM WILL BE INCLUDED WHETHER SHOWN OR NOT SHOWN BUT IMPLIED FOR A COMPLETE SYSTEM.

ELECTRICAL SCOPE OF WORK:
THE CONTRACTOR IS ASSUMED TO BE OF MASTER ELECTRICIAN EXPERIENCE AND SHALL PROVIDE ANY APPLICABLE SINGLE LINE DIAGRAMS, PANEL SCHEDULES AND CIRCUIT PLAN DESIGNS REQUIRED TO PROVIDE A COMPLETE AND FUNCTIONING ELECTRICAL SYSTEM. THIS PRICE SHALL BE INCLUDED IN THE CONTRACTORS BASE BID PRICE. NO CLAIM FOR EXTRA PAYMENT WILL BE ALLOWED FOR FAILURE TO INCLUDE THIS COST INTO THE BASE BID. BIDDERS SHALL ACCEPT SOLE RESPONSIBILITY FOR ANY ERROR OR NEGLECT IN PRICING THE ABOVE ITEMS IN THERE BID.

NOTE:
CABLE, VOICE AND DATA OUTLETS ARE SHOWN FOR SCOPE OF WORK PURPOSES ONLY. CONTRACTOR TO COORDINATE EXACT LOCATIONS WITH OWNER PRIOR TO ORDERING AND INSTALLATION OF EQUIPMENT.

NOTE:
INSTALL OR EXTEND THE BUILDING FIRE ALARM SYSTEM IN CONFORMANCE WITH O.B.C. 212 3.2.4. AND CAN/ULC-5524-6.

NOTE:
CONTRACTOR TO PROVIDE SEPARATE PRICE FOR CREDIT IF NO LAUNDRY BOOSTER FANS ARE REQUIRED.

NOTE:
CONTRACTOR TO CONFIRM ALL SPRINKLER ZONES WITH SPRINKLER CONTRACTOR PRIOR TO COMMENCEMENT OF WORK.

NOTE:
ELECTRICAL CONDUCTORS ASSOCIATED WITH FIRE ALARM SYSTEM AND EMERGENCY EQUIPMENT SHALL CONFORM TO OBC 3.2.7.10

NOTE:
CONTRACTOR TO COORDINATE ANY ADDITIONAL LIGHTING, RECEPTACLE AND COMMUNICATION OUTLET REQUIREMENTS WITH CLIENT PRIOR TO COMMENCEMENT OF WORK.

NOTE:
THE TOP OF THE ANNUNCIATOR OR DISPLAY AND CONTROL CENTRE LEGEND OR OPERATING CONTROL SHALL BE NOT MORE THAN 1800mm ABOVE FINISHED FLOOR LEVEL.

NOTE:
FIRE ALARM VERIFICATION SHALL INCLUDE AUDIBILITY LEVELS THROUGHOUT THE BUILDING.

NOTE:
STANDARD STUD DEPTH IS 3.5". CONTRACTOR TO COORDINATE PANEL SIZES ON-SITE PRIOR TO ORDERING.

FIRE ALARM LEGEND	
☉	SMOKE DETECTOR
☉	FIRE ALARM STROBE (SUITE)
☉	FIRE ALARM COMBINATION HORN/STROBE (CORRIDOR)
☉	FIRE ALARM HORN (SUITE)
☉	FIRE ALARM HORN (CORRIDOR)
☉	HEAT DETECTOR
☉	FIRE ALARM PULL STATION
☉	FIRE ALARM CONTROL PANEL
☉	COMBINATION SMOKE ALARM AND CARBON MONOXIDE DETECTOR INTERCONNECTED WHEN MORE THAN ONE PER UNIT C/W BATTERY BACKUP AND VISUAL SIGNALING COMPONENT- SUITES
☉	SMOKE ALARM INTERCONNECTED WHEN MORE THAN ONE PER UNIT C/W BATTERY BACKUP AND VISUAL SIGNALING COMPONENT - SUITES
☉	SUPERVISOR VALVE
☉	SPRINKLER FLOW SWITCH
☉	DUCT SMOKE DETECTOR

POWER LEGEND	
⊕	RECEPTACLE
⊕	IN-FLOOR RECEPTACLE
⊕	240V 1PH GROUNDED RECEPTACLE
⊕	120V POWER SUPPLY
⊕	208V POWER SUPPLY
⊕	575V 3PH GROUNDED DIRECT EQUIPMENT CONNECTION
⊕	ELECTRICAL DISCONNECT
⊕	WALL MOUNTED TELEVISION (CABLE) OUTLET
⊕	VOICE AND DATA COMBO OUTLET BOX - WALL BOX, OUTLET & 3/4" CONDUIT C/W PULL STRING UP WALL TO SOURCE
⊕	VOICE ONLY OUTLET BOX - WALL BOX, OUTLET & 3/4" CONDUIT C/W PULL STRING UP WALL TO SOURCE
⊕	DATA ONLY OUTLET BOX - WALL BOX, OUTLET & 3/4" CONDUIT C/W PULL STRING UP WALL TO SOURCE
⊕	PUSHBUTTON FOR POWER DOOR OPERATOR
⊕	ELECTRICAL PANEL
⊕	GFI RATED RECEPTACLE
⊕	WEATHERPROOF
⊕	EQUIPMENT/FIXTURE TAG

NO.	REVISION	DATE	BY	APPROVED
5	ISSUED FOR PRICING	05/22	G.O	G.V.W.O
4	RE-ISSUED FOR PERMIT	05/05	G.O	G.V.W.O
3	ISSUED FOR PERMIT	03/30	G.O	G.V.W.O
2	RE- ISSUED FOR COORDINATION	03/20	G.O	G.V.W.O
1	ISSUED FOR COORDINATION	01/24	G.O	G.V.W.O

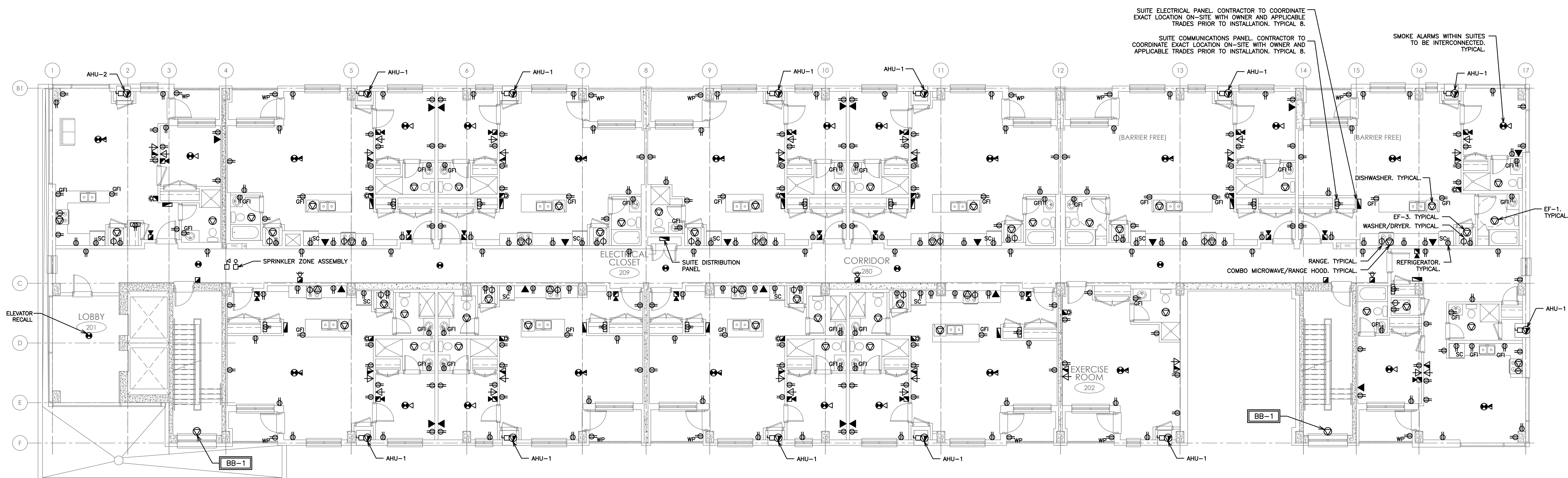
513 DUNDAS STREET EAST, WHITBY, ONTARIO
KIYA DEVELOPMENTS LTD.

ELECTRICAL POWER GROUND FLOOR

D.G. Biddle & Associates Limited
consulting engineers and planners

96 KING STREET EAST • OSHAWA, ON L1H 1B6
PHONE (905)576-8500 • FAX (905)576-9730
INFO@DGBIDDLE.COM

SCALE:	1:100	PROJECT NO.	116194
DRAWN BY:	J.E.C	DRAWING NO.	E1.2
DESIGN BY:	J.E.C/G.V.W.O	CAD FILE:	116194_M2
CHECKED BY:	G.V.W.O	PLOT DATE:	05/22/20
DATE:	MAY 2020	SUBMISSION:	PRICING



NOTE:
ELECTRICAL CONTRACTOR TO PREPARE LAYOUT SHOP DRAWINGS OF MECHANICAL AND ELECTRICAL ROOMS INDICATING ALL ELECTRICAL EQUIPMENT & MOUNTING HEIGHTS TO ENSURE SPACE REQUIREMENTS ARE ADEQUATE. REPORT ANY CONFLICTS TO ENGINEER PRIOR TO ORDERING EQUIPMENT. ALL CLEARANCES MUST COMPLY WITH LOCAL HYDRO REQUIREMENTS AND ELECTRICAL SAFETY AUTHORITIES.

NOTE:
ALL DATA, TELEPHONE AND TV OUTLETS SHOWN ARE FOR SCOPE OF WORK PURPOSES ONLY. CONTRACTOR TO COORDINATE EXACT LOCATIONS AND QUANTITIES OF ALL DATA, TELEPHONE AND TV OUTLETS ON-SITE WITH OWNER PRIOR TO COMMENCEMENT OF WORK.

NOTE:
1. SMOKE ALARMS SHALL BE INSTALLED WITH PERMANENT CONNECTION TO AN ELECTRICAL CIRCUIT.
2. NO DISCONNECT SWITCH BETWEEN SMOKE ALARM AND CIRCUIT BREAKER.
3. SMOKE ALARMS TO HAVE BATTERY BACKUP.
4. PROVIDE A CARBON MONOXIDE (CO) ALARM IN EACH SUITE NEAR A BEDROOM.

NOTE:
TENDERING OF THESE DOCUMENTS IS DONE UNDER THE MUTUAL UNDERSTANDING THAT ALL CONTRACTORS ARE EXPERIENCED AND LICENSED IN THE WORKS BEING PROVIDED AND THAT ALL COMPONENTS OF A FULLY FUNCTIONING SYSTEM WILL BE INCLUDED WHETHER SHOWN OR NOT SHOWN BUT IMPLIED FOR A COMPLETE SYSTEM.

ELECTRICAL SCOPE OF WORK:
THE CONTRACTOR IS ASSUMED TO BE OF MASTER ELECTRICIAN EXPERIENCE AND SHALL PROVIDE ANY APPLICABLE SINGLE LINE DIAGRAMS, PANEL SCHEDULES AND CIRCUIT PLAN DESIGNS REQUIRED TO PROVIDE A COMPLETE AND FUNCTIONING ELECTRICAL SYSTEM. THIS PRICE SHALL BE INCLUDED IN THE CONTRACTORS BASE BID PRICE. NO CLAIM FOR EXTRA PAYMENT WILL BE ALLOWED FOR FAILURE TO INCLUDE THIS COST INTO THE BASE BID. BIDDERS SHALL ACCEPT SOLE RESPONSIBILITY FOR ANY ERROR OR NEGLECT IN PRICING THE ABOVE ITEMS IN THERE BID.

NOTE:
CABLE, VOICE AND DATA OUTLETS ARE SHOWN FOR SCOPE OF WORK PURPOSES ONLY. CONTRACTOR TO COORDINATE EXACT LOCATIONS WITH OWNER PRIOR TO ORDERING AND INSTALLATION OF EQUIPMENT.

NOTE:
INSTALL OR EXTEND THE BUILDING FIRE ALARM SYSTEM IN CONFORMANCE WITH O.B.C. 212 3.2.4. AND CAN/ULC-5524-6.

NOTE:
CONTRACTOR TO PROVIDE SEPARATE PRICE FOR CREDIT IF NO LAUNDRY BOOSTER FANS ARE REQUIRED.

NOTE:
CONTRACTOR TO CONFIRM ALL SPRINKLER ZONES WITH SPRINKLER CONTRACTOR PRIOR TO COMMENCEMENT OF WORK.

NOTE:
ELECTRICAL CONDUCTORS ASSOCIATED WITH FIRE ALARM SYSTEM AND EMERGENCY EQUIPMENT SHALL CONFORM TO OBC 3.2.7.10

NOTE:
CONTRACTOR TO COORDINATE ANY ADDITIONAL LIGHTING, RECEPTACLE AND COMMUNICATION OUTLET REQUIREMENTS WITH CLIENT PRIOR TO COMMENCEMENT OF WORK.

NOTE:
FIRE ALARM VERIFICATION SHALL INCLUDE AUDIBILITY LEVELS THROUGHOUT THE BUILDING.

NOTE:
STANDARD STUD DEPTH IS 3.5". CONTRACTOR TO COORDINATE PANEL SIZES ON-SITE PRIOR TO ORDERING.

SUITE ELECTRICAL PANEL. CONTRACTOR TO COORDINATE EXACT LOCATION ON-SITE WITH OWNER AND APPLICABLE TRADES PRIOR TO INSTALLATION. TYPICAL 8.

SUITE COMMUNICATIONS PANEL. CONTRACTOR TO COORDINATE EXACT LOCATION ON-SITE WITH OWNER AND APPLICABLE TRADES PRIOR TO INSTALLATION. TYPICAL 8.

SMOKE ALARMS WITHIN SUITES TO BE INTERCONNECTED. TYPICAL.

FIRE ALARM LEGEND	
	SMOKE DETECTOR
	FIRE ALARM STROBE (SUITE)
	FIRE ALARM COMBINATION HORN/STROBE (CORRIDOR)
	FIRE ALARM HORN (SUITE)
	FIRE ALARM HORN (CORRIDOR)
	HEAT DETECTOR
	FIRE ALARM PULL STATION
	FIRE ALARM CONTROL PANEL
	COMBINATION SMOKE ALARM AND CARBON MONOXIDE DETECTOR INTERCONNECTED WHEN MORE THAN ONE PER UNIT C/W BATTERY BACKUP AND VISUAL SIGNALING COMPONENT - SUITES
	SMOKE ALARM INTERCONNECTED WHEN MORE THAN ONE PER UNIT C/W BATTERY BACKUP AND VISUAL SIGNALING COMPONENT - SUITES
	SUPERVISOR VALVE
	SPRINKLER FLOW SWITCH
	DUCT SMOKE DETECTOR

POWER LEGEND	
	RECEPTACLE
	IN-FLOOR RECEPTACLE
	240V 1PH GROUNDED RECEPTACLE
	120V POWER SUPPLY
	208V POWER SUPPLY
	575V 3PH GROUNDED DIRECT EQUIPMENT CONNECTION
	ELECTRICAL DISCONNECT
	WALL MOUNTED TELEVISION (CABLE) OUTLET
	VOICE AND DATA COMBO OUTLET BOX - WALL BOX, OUTLET & 3/4" CONDUIT C/W PULL STRING UP WALL TO SOURCE
	VOICE ONLY OUTLET BOX - WALL BOX, OUTLET & 3/4" CONDUIT C/W PULL STRING UP WALL TO SOURCE
	DATA ONLY OUTLET BOX - WALL BOX, OUTLET & 3/4" CONDUIT C/W PULL STRING UP WALL TO SOURCE
	PUSHBUTTON FOR POWER DOOR OPERATOR
	ELECTRICAL PANEL
	GFI RATED RECEPTACLE
	WEATHERPROOF
	EQUIPMENT/FIXTURE TAG

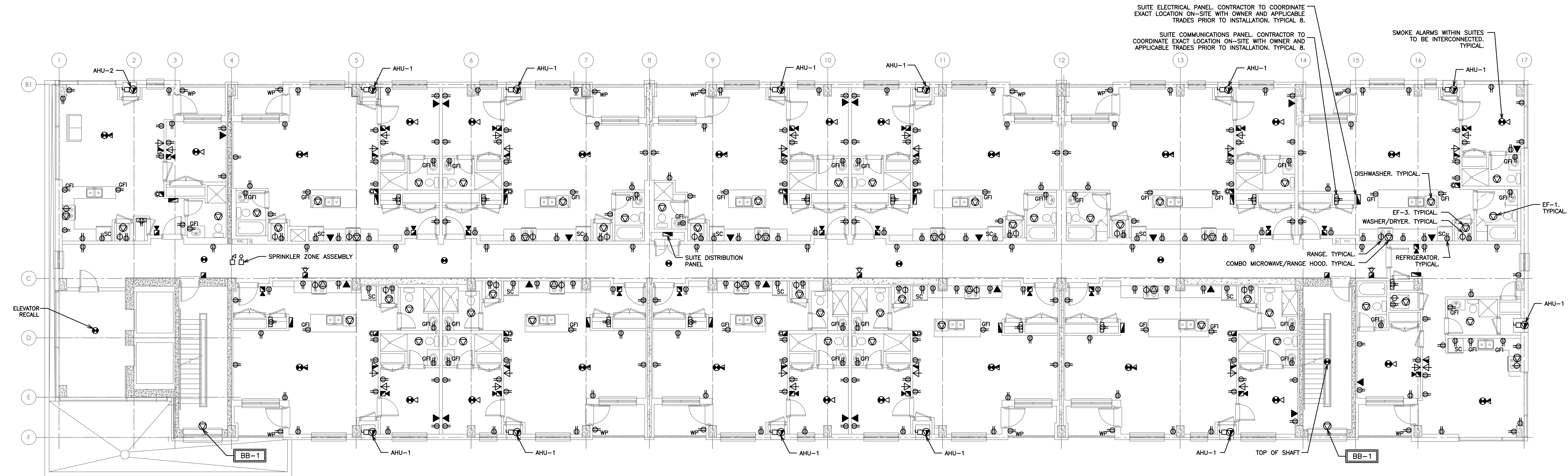
NO.	REVISION	DATE	BY	APPROVED
5	ISSUED FOR PRICING	05/22	G.O	G.V.W.O
4	RE-ISSUED FOR PERMIT	05/05	G.O	G.V.W.O
3	ISSUED FOR PERMIT	03/30	G.O	G.V.W.O
2	RE-ISSUED FOR COORDINATION	03/20	G.O	G.V.W.O
1	ISSUED FOR COORDINATION	01/24	G.O	G.V.W.O

513 DUNDAS STREET EAST, WHITBY, ONTARIO
KIYA DEVELOPMENTS LTD.

ELECTRICAL POWER SECOND FLOOR

D.G. Biddle & Associates Limited
consulting engineers and planners
96 KING STREET EAST • OSHAWA, ON L1H 1B6
PHONE (905)576-8500 • FAX (905)576-9730
INFO@DGBIDDLE.COM

SCALE:	1:100	PROJECT NO.	116194
DRAWN BY:	J.E.C	DRAWING NO.	E1.3
DESIGN BY:	J.E.C/G.V.W.O	CAD FILE:	116194_M2
CHECKED BY:	G.V.W.O	PLOT DATE:	05/22/20
DATE:	MAY 2020	SUBMISSION:	PRICING



NOTE:
ELECTRICAL CONTRACTOR TO PREPARE LAYOUT SHOP DRAWINGS OF MECHANICAL AND ELECTRICAL ROOMS INDICATING ALL ELECTRICAL EQUIPMENT & MOUNTING HEIGHTS TO ENSURE SPACE REQUIREMENTS ARE ADEQUATE. REPORT ANY CONFLICTS TO ENGINEER PRIOR TO ORDERING EQUIPMENT. ALL CLEARANCES MUST COMPLY WITH LOCAL HYDRO REQUIREMENTS AND ELECTRICAL SAFETY AUTHORITIES.

NOTE:
ALL DATA, TELEPHONE AND TV OUTLETS SHOWN ARE FOR SCOPE OF WORK PURPOSES ONLY. CONTRACTOR TO COORDINATE EXACT LOCATIONS AND QUANTITIES OF ALL DATA, TELEPHONE AND TV OUTLETS ON-SITE WITH OWNER PRIOR TO COMMENCEMENT OF WORK.

NOTE:
1. SMOKE ALARMS SHALL BE INSTALLED WITH PERMANENT CONNECTION TO AN ELECTRICAL CIRCUIT.
2. NO DISCONNECT SWITCH BETWEEN SMOKE ALARM AND CIRCUIT BREAKER.
3. SMOKE ALARMS TO HAVE BATTERY BACKUP.
4. PROVIDE A CARBON MONOXIDE (CO) ALARM IN EACH SUITE NEAR A BEDROOM.

NOTE:
TENDERING OF THESE DOCUMENTS IS DONE UNDER THE MUTUAL UNDERSTANDING THAT ALL CONTRACTORS ARE EXPERIENCED AND LICENSED IN THE WORKS BEING PROVIDED AND THAT ALL COMPONENTS OF A FULLY FUNCTIONING SYSTEM WILL BE INCLUDED WHETHER SHOWN OR NOT SHOWN BUT IMPLIED FOR A COMPLETE SYSTEM.

ELECTRICAL SCOPE OF WORK:
THE CONTRACTOR IS ASSUMED TO BE OF MASTER ELECTRICIAN EXPERIENCE AND SHALL PROVIDE ANY APPLICABLE SINGLE LINE DIAGRAMS, PANEL SCHEDULES AND CIRCUIT PLAN DESIGNS REQUIRED TO PROVIDE A COMPLETE AND FUNCTIONING ELECTRICAL SYSTEM. THIS PRICE SHALL BE INCLUDED IN THE CONTRACTORS BASE BID PRICE. NO CLAIM FOR EXTRA PAYMENT WILL BE ALLOWED FOR FAILURE TO INCLUDE THIS COST INTO THE BASE BID. BIDDERS SHALL ACCEPT SOLE RESPONSIBILITY FOR ANY ERROR OR NEGLECT IN PRICING THE ABOVE ITEMS IN THEIR BID.

NOTE:
CABLE, VOICE AND DATA OUTLETS ARE SHOWN FOR SCOPE OF WORK PURPOSES ONLY. CONTRACTOR TO COORDINATE EXACT LOCATIONS WITH OWNER PRIOR TO ORDERING AND INSTALLATION OF EQUIPMENT.

NOTE:
INSTALL OR EXTEND THE BUILDING FIRE ALARM SYSTEM IN CONFORMANCE WITH O.B.C. 212 3.2.4. AND CAN/ULC-S524-6.

NOTE:
CONTRACTOR TO PROVIDE SEPARATE PRICE FOR CREDIT IF NO LAUNDRY BOOSTER FANS ARE REQUIRED.

NOTE:
CONTRACTOR TO CONFIRM ALL SPRINKLER ZONES WITH SPRINKLER COMMENCEMENT OF WORK.

NOTE:
ELECTRICAL CONDUCTORS ASSOCIATED WITH FIRE ALARM SYSTEM AND EMERGENCY EQUIPMENT SHALL CONFORM TO OBC 3.2.7.10

NOTE:
CONTRACTOR TO COORDINATE ANY ADDITIONAL LIGHTING, RECEPTACLE AND COMMUNICATION OUTLET REQUIREMENTS WITH CLIENT PRIOR TO COMMENCEMENT OF WORK.

NOTE:
FIRE ALARM VERIFICATION SHALL INCLUDE AUDIBILITY LEVELS THROUGHOUT THE BUILDING.

NOTE:
STANDARD STUD DEPTH IS 3.5". CONTRACTOR TO COORDINATE PANEL SIZES ON-SITE PRIOR TO ORDERING.

FIRE ALARM LEGEND	
	SMOKE DETECTOR
	FIRE ALARM STROBE (SUITE)
	FIRE ALARM COMBINATION HORN/STROBE (CORRIDOR)
	FIRE ALARM HORN (SUITE)
	FIRE ALARM HORN (CORRIDOR)
	HEAT DETECTOR
	FIRE ALARM PULL STATION
	FIRE ALARM CONTROL PANEL
	COMBINATION SMOKE ALARM AND CARBON MONOXIDE DETECTOR INTERCONNECTED WHEN MORE THAN ONE PER UNIT C/W BATTERY BACKUP AND VISUAL SIGNALING COMPONENT - SUITES
	SUPERVISOR VALVE
	SPRINKLER FLOW SWITCH
	DUCT SMOKE DETECTOR

POWER LEGEND	
	RECEPTACLE
	IN-FLOOR RECEPTACLE
	240V 1PH GROUNDED RECEPTACLE
	120V POWER SUPPLY
	208V POWER SUPPLY
	575V 3PH GROUNDED DIRECT EQUIPMENT CONNECTION
	ELECTRICAL DISCONNECT
	WALL MOUNTED TELEVISION (CABLE) OUTLET
	VOICE AND DATA COMBO OUTLET BOX - WALL BOX, OUTLET & 3/4" CONDUIT C/W PULL STRING UP WALL TO SOURCE
	VOICE ONLY OUTLET BOX - WALL BOX, OUTLET & 3/4" CONDUIT C/W PULL STRING UP WALL TO SOURCE
	DATA ONLY OUTLET BOX - WALL BOX, OUTLET & 3/4" CONDUIT C/W PULL STRING UP WALL TO SOURCE
	PUSHBUTTON FOR POWER DOOR OPERATOR
	ELECTRICAL PANEL
	GFI RATED RECEPTACLE
	WEATHERPROOF
	EQUIPMENT/FIXTURE TAG

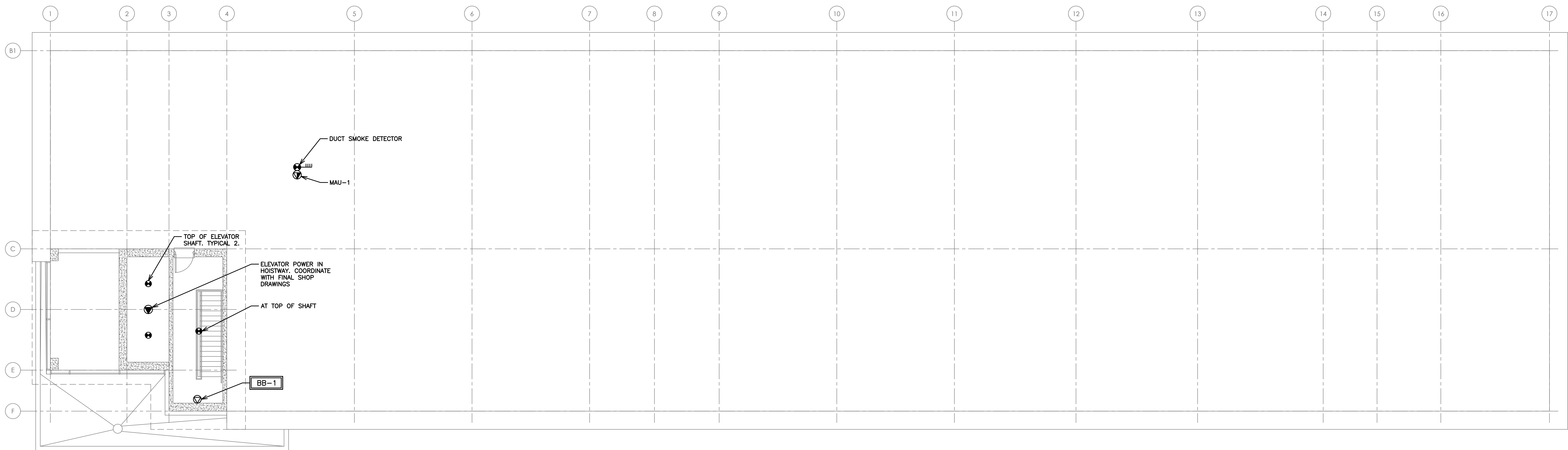
NO.	REVISION	DATE	BY	APPROVED
5	ISSUED FOR PRICING	05/22	G.O	G.V.W.O
4	RE-ISSUED FOR PERMIT	05/05	G.O	G.V.W.O
3	ISSUED FOR PERMIT	03/30	G.O	G.V.W.O
2	RE- ISSUED FOR COORDINATION	03/20	G.O	G.V.W.O
1	ISSUED FOR COORDINATION	01/24	G.O	G.V.W.O

513 DUNDAS STREET EAST, WHITBY, ONTARIO
KIYA DEVELOPMENTS LTD.

ELECTRICAL POWER THIRD TO SIXTH FLOOR

D.G. Biddle & Associates Limited
consulting engineers and planners
96 KING STREET EAST • OSHAWA, ON L1H 1B6
PHONE (905)576-8500 • FAX (905)576-9730
INFO@DGBIDDLE.COM

SCALE:	1:100	PROJECT NO.	116194
DRAWN BY:	J.E.C	DRAWING NO.	E1.4
DESIGN BY:	J.E.C/G.V.W.O	CAD FILE:	116194_M2
CHECKED BY:	G.V.W.O	PLOT DATE:	05/22/20
DATE:	MAY 2020	SUBMISSION:	PRICING



NOTE:
CONTRACTOR TO COORDINATE ELEVATOR ELECTRICAL REQUIREMENTS WITH ELEVATOR MANUFACTURER PRIOR TO ORDERING EQUIPMENT. ELEVATOR MANUFACTURERS DRAWINGS SUPERSEDE THESE DRAWINGS.

NOTE:
ELECTRICAL CONTRACTOR TO VERIFY MAU POWER REQUIREMENTS PRIOR TO ORDERING EQUIPMENT.

NOTE:
INSTALL OR EXTEND THE BUILDING FIRE ALARM SYSTEM IN CONFORMANCE WITH O.B.C. 212 3.2.4. AND CAN/ULC-S524-6.

NOTE:
TENDERING OF THESE DOCUMENTS IS DONE UNDER THE MUTUAL UNDERSTANDING THAT ALL CONTRACTORS ARE EXPERIENCED AND LICENSED IN THE WORKS BEING PROVIDED AND THAT ALL COMPONENTS OF A FULLY FUNCTIONING SYSTEM WILL BE INCLUDED WHETHER SHOWN OR NOT SHOWN BUT IMPLIED FOR A COMPLETE SYSTEM.

NOTE:
ELECTRICAL CONDUCTORS ASSOCIATED WITH FIRE ALARM SYSTEM AND EMERGENCY EQUIPMENT SHALL CONFORM TO OBC 3.2.7.10

ELECTRICAL SCOPE OF WORK:
THE CONTRACTOR IS ASSUMED TO BE OF MASTER ELECTRICIAN EXPERIENCE AND SHALL PROVIDE ANY APPLICABLE SINGLE LINE DIAGRAMS, PANEL SCHEDULES AND CIRCUIT PLAN DESIGNS REQUIRED TO PROVIDE A COMPLETE AND FUNCTIONING ELECTRICAL SYSTEM. THIS PRICE SHALL BE INCLUDED IN THE CONTRACTORS BASE BID PRICE. NO CLAIM FOR EXTRA PAYMENT WILL BE ALLOWED FOR FAILURE TO INCLUDE THIS COST INTO THE BASE BID. BIDDERS SHALL ACCEPT SOLE RESPONSIBILITY FOR ANY ERROR OR NEGLECT IN PRICING THE ABOVE ITEMS IN THERE BID.

FIRE ALARM LEGEND	
	SMOKE DETECTOR
	FIRE ALARM STROBE (SUITE)
	FIRE ALARM COMBINATION HORN/STROBE (CORRIDOR)
	FIRE ALARM HORN (SUITE)
	FIRE ALARM HORN (CORRIDOR)
	HEAT DETECTOR
	FIRE ALARM PULL STATION
	FIRE ALARM CONTROL PANEL
	COMBINATION SMOKE ALARM AND CARBON MONOXIDE DETECTOR INTERCONNECTED WHEN MORE THAN ONE PER UNIT C/W BATTERY BACKUP AND VISUAL SIGNALING COMPONENT - SUITES
	SMOKE ALARM INTERCONNECTED WHEN MORE THAN ONE PER UNIT C/W BATTERY BACKUP AND VISUAL SIGNALING COMPONENT - SUITES
	SUPERVISOR VALVE
	SPRINKLER FLOW SWITCH
	DUCT SMOKE DETECTOR

POWER LEGEND	
	RECEPTACLE
	IN-FLOOR RECEPTACLE
	240V 1PH GROUNDED RECEPTACLE
	120V POWER SUPPLY
	208V POWER SUPPLY
	575V 3PH GROUNDED DIRECT EQUIPMENT CONNECTION
	ELECTRICAL DISCONNECT
	WALL MOUNTED TELEVISION (CABLE) OUTLET
	VOICE AND DATA COMBO OUTLET BOX - WALL BOX, OUTLET & 3/4" CONDUIT C/W PULL STRING UP WALL TO SOURCE
	VOICE ONLY OUTLET BOX - WALL BOX, OUTLET & 3/4" CONDUIT C/W PULL STRING UP WALL TO SOURCE
	DATA ONLY OUTLET BOX - WALL BOX, OUTLET & 3/4" CONDUIT C/W PULL STRING UP WALL TO SOURCE
	PUSHBUTTON FOR POWER DOOR OPERATOR
	ELECTRICAL PANEL
	GFI RATED RECEPTACLE
	WEATHERPROOF
	EQUIPMENT/FIXTURE TAG

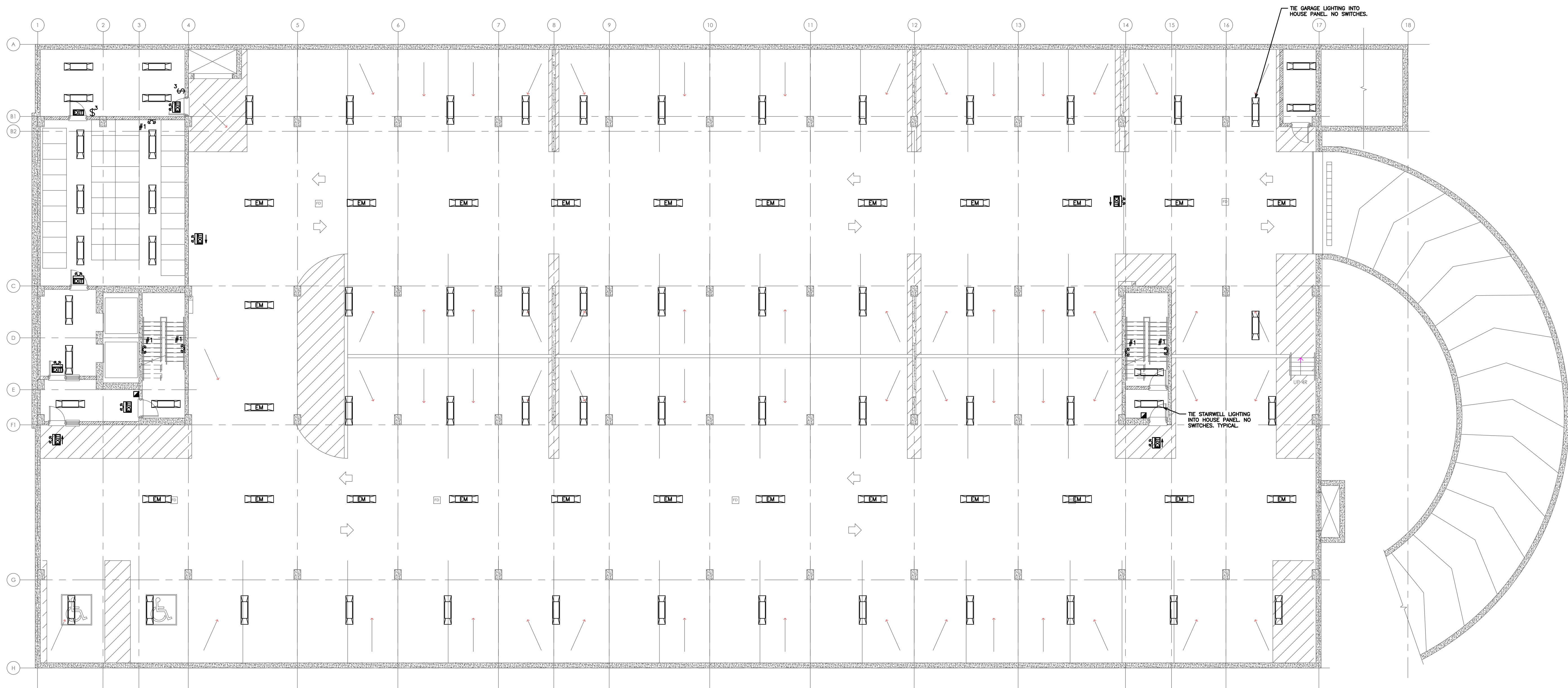
NO.	REVISION	DATE	BY	APPROVED
5	ISSUED FOR PRICING	05/22	G.O	G.V.W.O
4	RE-ISSUED FOR PERMIT	05/05	G.O	G.V.W.O
3	ISSUED FOR PERMIT	03/30	G.O	G.V.W.O
2	RE- ISSUED FOR COORDINATION	03/20	G.O	G.V.W.O
1	ISSUED FOR COORDINATION	01/24	G.O	G.V.W.O

REVISIONS
513 DUNDAS STREET EAST, WHITBY, ONTARIO
KIYA DEVELOPMENTS LTD.

ELECTRICAL POWER ROOF LAYOUT

D.G. Biddle & Associates Limited
consulting engineers and planners
96 KING STREET EAST • OSHAWA, ON L1H 1B6
PHONE (905)576-8500 • FAX (905)576-9730
INFO@DGBIDDLE.COM

SCALE:	1:100	PROJECT NO.	116194
DRAWN BY:	J.E.C	DRAWING NO.	E1.5
DESIGN BY:	J.E.C/G.V.W.O	CAD FILE:	116194_M2
CHECKED BY:	G.V.W.O	PLOT DATE:	05/22/20
DATE:	MAY 2020	SUBMISSION:	PRICING



ELECTRICAL SCOPE OF WORK:
 THE CONTRACTOR IS ASSUMED TO BE OF MASTER ELECTRICIAN EXPERIENCE AND SHALL PROVIDE ANY APPLICABLE SINGLE LINE DIAGRAMS, PANEL SCHEDULES AND CIRCUIT PLAN DESIGNS REQUIRED TO PROVIDE A COMPLETE AND FUNCTIONING ELECTRICAL SYSTEM. THIS PRICE SHALL BE INCLUDED IN THE CONTRACTORS BASE BID PRICE. NO CLAIM FOR EXTRA PAYMENT WILL BE ALLOWED FOR FAILURE TO INCLUDE THIS COST INTO THE BASE BID. BIDDERS SHALL ACCEPT SOLE RESPONSIBILITY FOR ANY ERROR OR NEGLIGENCE IN PRICING THE ABOVE ITEMS IN THERE BID.

NOTE:
 TENDERING OF THESE DOCUMENTS IS DONE UNDER THE MUTUAL UNDERSTANDING THAT ALL CONTRACTORS ARE EXPERIENCED AND LICENSED IN THE WORKS BEING PROVIDED AND THAT ALL COMPONENTS OF A FULLY FUNCTIONING SYSTEM WILL BE INCLUDED WHETHER SHOWN OR NOT SHOWN BUT IMPLIED FOR A COMPLETE SYSTEM.

NOTE:
 CONTRACTOR TO COORDINATE EXACT LOCATIONS, QUANTITIES AND SPECIFICATIONS OF ALL LIGHTING ON-SITE WITH OWNER PRIOR TO COMMENCEMENT OF WORK.

NOTE:
 CONTRACTOR TO CONFIRM ALL LIGHTING CONTROL LOCATIONS, QUANTITIES AND REQUIREMENTS FOR ALL AREAS ON-SITE WITH CLIENT PRIOR TO COMMENCEMENT OF WORK.

NOTE:
 REFER TO DRAWING SL-1 FOR EXTERIOR LIGHTING PLAN.

LIGHTING LEGEND	
\$ S	SINGLE POLE, SINGLE THROW TOGGLE SWITCH, ONE, TWO, OR THREE GANGED ('3' DENOTES 3-WAY)
[Symbol]	1x4 FLUORESCENT FIXTURE, STANDARD LENS, ELECTRONIC BALLAST, 2-T8 TUBES, 120V/1PH. EM DENOTES EMERGENCY BACK UP BATTERY.
[Symbol]	DOME FIXTURE BY OWNER
[Symbol]	POT LIGHT BY OWNER
[Symbol]	EXIT SIGN WITH EMERGENCY LIGHTING EQUAL TO LUMACELL LMCE WITH BACK-UP BATTERY PACK
[Symbol]	DOUBLE HEAD EMERGENCY LIGHT EQUAL TO LUMACELL MQ212V12W
[Symbol]	SINGLE HEAD EMERGENCY LIGHT EQUAL TO LUMACELL MQ112V12W
BU-1	BACK UP BATTERY PACK
[Symbol]	EXTERIOR WALLPACK BY OWNER
[Symbol]	OCCUPANCY SENSOR

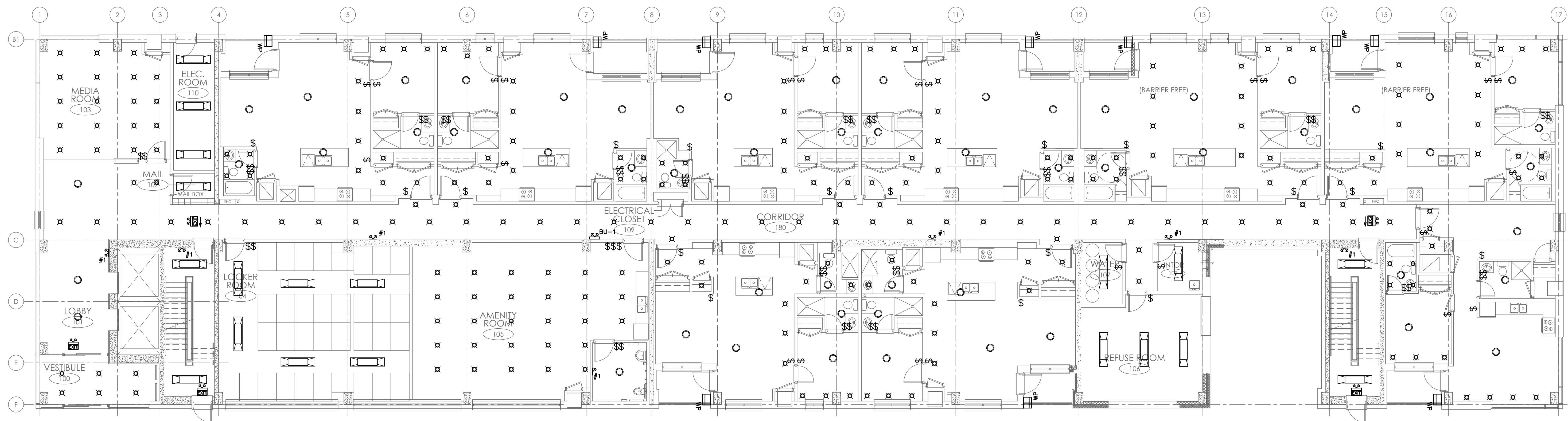
NO.	REVISION	DATE	BY	APPROVED
5	ISSUED FOR PRICING	05/22	G.O	G.V.W.O
4	RE-ISSUED FOR PERMIT	05/05	G.O	G.V.W.O
3	ISSUED FOR PERMIT	03/30	G.O	G.V.W.O
2	RE- ISSUED FOR COORDINATION	03/20	G.O	G.V.W.O
1	ISSUED FOR COORDINATION	01/24	G.O	G.V.W.O

REVISIONS
 513 DUNDAS STREET EAST, WHITBY, ONTARIO
 KIYA DEVELOPMENTS LTD.

ELECTRICAL LIGHTING PARKING GARAGE

D.G. Biddle & Associates Limited
 consulting engineers and planners
 96 KING STREET EAST • OSHAWA, ON L1H 1B6
 PHONE (905)576-8500 • FAX (905)576-9730
 INFO@DGBIDDLE.COM

SCALE:	1:100	PROJECT NO.	116194
DRAWN BY:	J.E.C	DRAWING NO.	E2.1
DESIGN BY:	J.E.C/G.V.W.O	CAD FILE:	116194_M2
CHECKED BY:	G.V.W.O	PLOT DATE:	05/22/20
DATE:	MAY 2020	SUBMISSION:	PRICING



TYPICAL FLOOR
SCALE: 1/8"

ELECTRICAL SCOPE OF WORK:
THE CONTRACTOR IS ASSUMED TO BE OF MASTER ELECTRICIAN EXPERIENCE AND SHALL PROVIDE ANY APPLICABLE SINGLE LINE DIAGRAMS, PANEL SCHEDULES AND CIRCUIT PLAN DESIGNS REQUIRED TO PROVIDE A COMPLETE AND FUNCTIONING ELECTRICAL SYSTEM. THIS PRICE SHALL BE INCLUDED IN THE CONTRACTORS BASE BID PRICE. NO CLAIM FOR EXTRA PAYMENT WILL BE ALLOWED FOR FAILURE TO INCLUDE THIS COST INTO THE BASE BID. BIDDERS SHALL ACCEPT SOLE RESPONSIBILITY FOR ANY ERROR OR NEGLECT IN PRICING THE ABOVE ITEMS IN THERE BID.

NOTE:
TENDERING OF THESE DOCUMENTS IS DONE UNDER THE MUTUAL UNDERSTANDING THAT ALL CONTRACTORS ARE EXPERIENCED AND LICENSED IN THE WORKS BEING PROVIDED AND THAT ALL COMPONENTS OF A FULLY FUNCTIONING SYSTEM WILL BE INCLUDED WHETHER SHOWN OR NOT SHOWN BUT IMPLIED FOR A COMPLETE SYSTEM.

NOTE:
CONTRACTOR TO COORDINATE EXACT LOCATIONS, QUANTITIES AND SPECIFICATIONS OF ALL LIGHTING ON-SITE WITH OWNER PRIOR TO COMMENCEMENT OF WORK.

NOTE:
CONTRACTOR TO CONFIRM ALL LIGHTING CONTROL LOCATIONS, QUANTITIES AND REQUIREMENTS FOR ALL AREAS ON-SITE WITH CLIENT PRIOR TO COMMENCEMENT OF WORK.

LIGHTING LEGEND	
\$ \$	SINGLE POLE, SINGLE THROW TOGGLE SWITCH, ONE, TWO, OR THREE GANGED ('3' DENOTES 3-WAY)
	1x4 FLUORESCENT FIXTURE, STANDARD LENS, ELECTRONIC BALLAST, 2-18 TUBES, 120V/1PH
○	DOME FIXTURE BY OWNER
⊗	POT LIGHT BY OWNER
	EXIT SIGN WITH EMERGENCY LIGHTING EQUAL TO LUMACELL LMCE WITH BACK-UP BATTERY PACK
	DOUBLE HEAD EMERGENCY LIGHT EQUAL TO LUMACELL MQ212V12W
	SINGLE HEAD EMERGENCY LIGHT EQUAL TO LUMACELL MQ112V12W
BU-1	BACK UP BATTERY PACK
WP	EXTERIOR WALLPACK BY OWNER
	OCCUPANCY SENSOR

NO.	REVISION	DATE	BY	APPROVED
5	ISSUED FOR PRICING	05/22	G.O	G.V.W.O
4	RE-ISSUED FOR PERMIT	05/05	G.O	G.V.W.O
3	ISSUED FOR PERMIT	03/30	G.O	G.V.W.O
2	RE- ISSUED FOR COORDINATION	03/20	G.O	G.V.W.O
1	ISSUED FOR COORDINATION	01/24	G.O	G.V.W.O

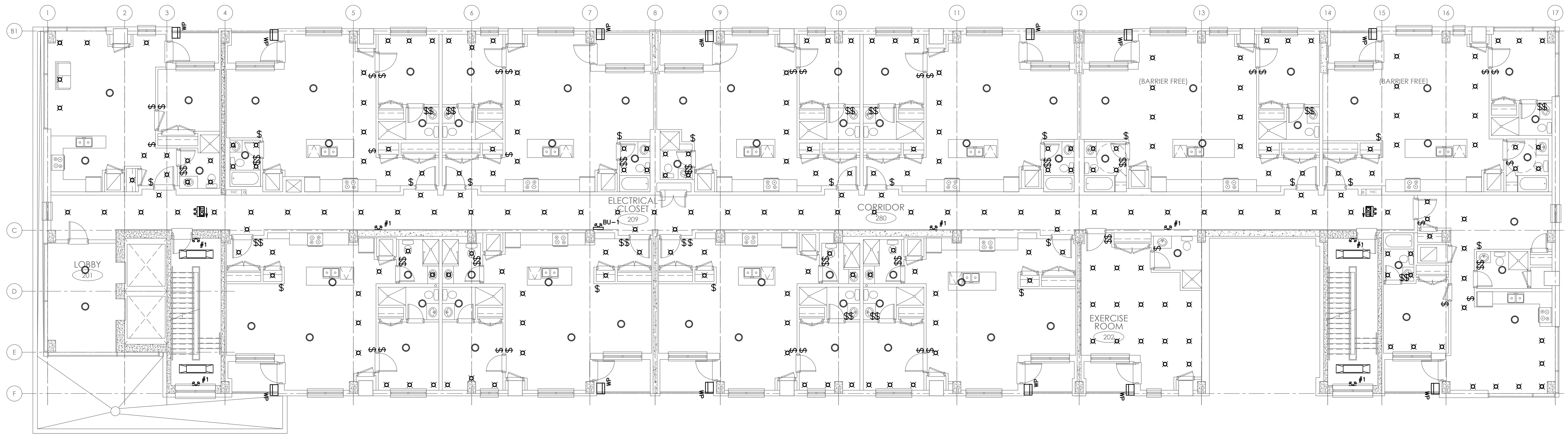
REVISIONS

513 DUNDAS STREET EAST, WHITBY, ONTARIO
KIYA DEVELOPMENTS LTD.

ELECTRICAL LIGHTING GROUND FLOOR

D.G. Biddle & Associates Limited
consulting engineers and planners
96 KING STREET EAST • OSHAWA, ON L1H 1B6
PHONE (905)576-8500 • FAX (905)576-9730
INFO@DGBIDDLE.COM

SCALE: 1:100	PROJECT NO. 116194
DRAWN BY: J.E.C	DRAWING NO. E2.2
DESIGN BY: J.E.C/G.V.W.O	
CHECKED BY: G.V.W.O	CAD FILE: 116194_M2
DATE: MAY 2020	PLOT DATE: 05/22/20 SUBMISSION: PRICING



ELECTRICAL SCOPE OF WORK:
 THE CONTRACTOR IS ASSUMED TO BE OF MASTER ELECTRICIAN EXPERIENCE AND SHALL PROVIDE ANY APPLICABLE SINGLE LINE DIAGRAMS, PANEL SCHEDULES AND CIRCUIT PLAN DESIGNS REQUIRED TO PROVIDE A COMPLETE AND FUNCTIONING ELECTRICAL SYSTEM. THIS PRICE SHALL BE INCLUDED IN THE CONTRACTOR'S BASE BID PRICE. NO CLAIM FOR EXTRA PAYMENT WILL BE ALLOWED FOR FAILURE TO INCLUDE THIS COST INTO THE BASE BID. BIDDERS SHALL ACCEPT SOLE RESPONSIBILITY FOR ANY ERROR OR NEGLECT IN PRICING THE ABOVE ITEMS IN THERE BID.

NOTE:
 TENDERING OF THESE DOCUMENTS IS DONE UNDER THE MUTUAL UNDERSTANDING THAT ALL CONTRACTORS ARE EXPERIENCED AND LICENSED IN THE WORKS BEING PROVIDED AND THAT ALL COMPONENTS OF A FULLY FUNCTIONING SYSTEM WILL BE INCLUDED WHETHER SHOWN OR NOT SHOWN BUT IMPLIED FOR A COMPLETE SYSTEM.

NOTE:
 CONTRACTOR TO COORDINATE EXACT LOCATIONS, QUANTITIES AND SPECIFICATIONS OF ALL LIGHTING ON-SITE WITH OWNER PRIOR TO COMMENCEMENT OF WORK.

NOTE:
 CONTRACTOR TO CONFIRM ALL LIGHTING CONTROL LOCATIONS, QUANTITIES AND REQUIREMENTS FOR ALL AREAS ON-SITE WITH CLIENT PRIOR TO COMMENCEMENT OF WORK.

LIGHTING LEGEND	
\$ 3	SINGLE POLE, SINGLE THROW TOGGLE SWITCH, ONE, TWO, OR THREE GANGED ('3' DENOTES 3-WAY)
	1x4 FLUORESCENT FIXTURE, STANDARD LENS, ELECTRONIC BALLAST, 2-18 TUBES, 120V/1PH
	DOMES FIXTURE BY OWNER
	POT LIGHT BY OWNER
	EXIT SIGN WITH EMERGENCY LIGHTING EQUAL TO LUMACELL LMCE WITH BACK-UP BATTERY PACK
	DOUBLE HEAD EMERGENCY LIGHT EQUAL TO LUMACELL MQ212V12W
	SINGLE HEAD EMERGENCY LIGHT EQUAL TO LUMACELL MQ112V12W
	BACK UP BATTERY PACK
	EXTERIOR WALLPACK BY OWNER
	OCCUPANCY SENSOR

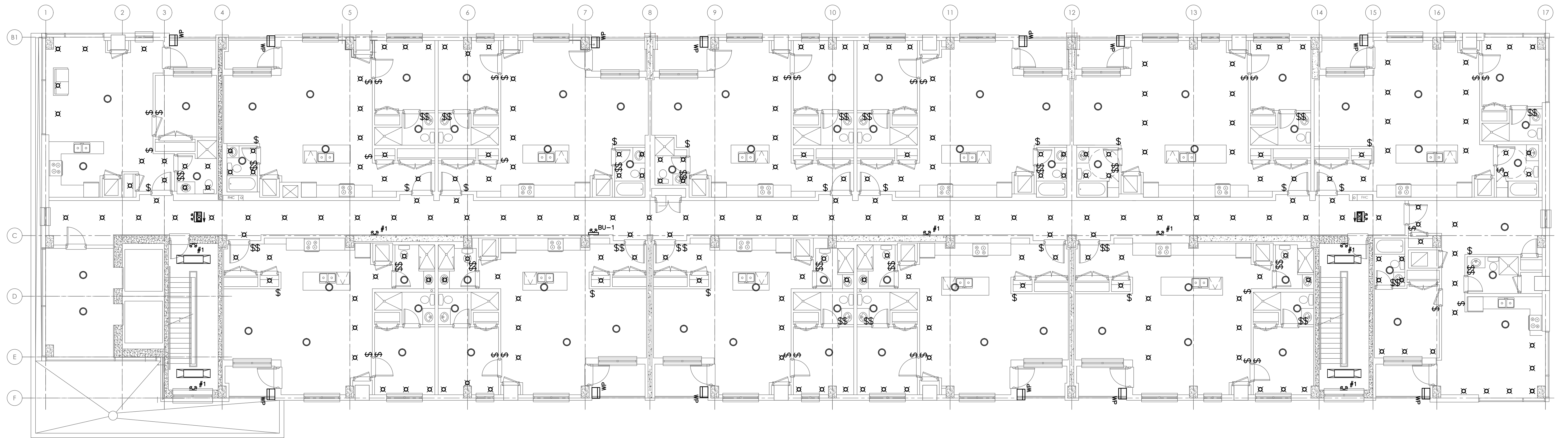
NO.	REVISION	DATE	BY	APPROVED
5	ISSUED FOR PRICING	05/22	G.O	G.V.W.O
4	RE-ISSUED FOR PERMIT	05/05	G.O	G.V.W.O
3	ISSUED FOR PERMIT	03/30	G.O	G.V.W.O
2	RE- ISSUED FOR COORDINATION	03/20	G.O	G.V.W.O
1	ISSUED FOR COORDINATION	01/24	G.O	G.V.W.O

REVISIONS
 513 DUNDAS STREET EAST, WHITBY, ONTARIO
 KIYA DEVELOPMENTS LTD.

ELECTRICAL LIGHTING SECOND FLOOR

D.G. Biddle & Associates Limited
 consulting engineers and planners
 96 KING STREET EAST • OSHAWA, ON L1H 1B6
 PHONE (905)576-8500 • FAX (905)576-9730
 INFO@DGBIDDLE.COM

SCALE:	1:100	PROJECT NO.	116194
DRAWN BY:	J.E.C	DRAWING NO.	E2.3
DESIGN BY:	J.E.C/G.V.W.O	CAD FILE:	116194_M2
CHECKED BY:	G.V.W.O	PLOT DATE:	05/22/20
DATE:	MAY 2020	SUBMISSION:	PRICING



ELECTRICAL SCOPE OF WORK:
 THE CONTRACTOR IS ASSUMED TO BE OF MASTER ELECTRICIAN EXPERIENCE AND SHALL PROVIDE ANY APPLICABLE SINGLE LINE DIAGRAMS, PANEL SCHEDULES AND CIRCUIT PLAN DESIGNS REQUIRED TO PROVIDE A COMPLETE AND FUNCTIONING ELECTRICAL SYSTEM. THIS PRICE SHALL BE INCLUDED IN THE CONTRACTORS BASE BID PRICE. NO CLAIM FOR EXTRA PAYMENT WILL BE ALLOWED FOR FAILURE TO INCLUDE THIS COST INTO THE BASE BID. BIDDERS SHALL ACCEPT SOLE RESPONSIBILITY FOR ANY ERROR OR NEGLECT IN PRICING THE ABOVE ITEMS IN THERE BID.

NOTE:
 TENDERING OF THESE DOCUMENTS IS DONE UNDER THE MUTUAL UNDERSTANDING THAT ALL CONTRACTORS ARE EXPERIENCED AND LICENSED IN THE WORKS BEING PROVIDED AND THAT ALL COMPONENTS OF A FULLY FUNCTIONING SYSTEM WILL BE INCLUDED WHETHER SHOWN OR NOT SHOWN BUT IMPLIED FOR A COMPLETE SYSTEM.

NOTE:
 CONTRACTOR TO COORDINATE EXACT LOCATIONS, QUANTITIES AND REQUIREMENTS OF ALL LIGHTING ON-SITE WITH OWNER PRIOR TO COMMENCEMENT OF WORK.

NOTE:
 CONTRACTOR TO CONFIRM ALL LIGHTING CONTROL LOCATIONS, QUANTITIES AND REQUIREMENTS FOR ALL AREAS ON-SITE WITH CLIENT PRIOR TO COMMENCEMENT OF WORK.

LIGHTING LEGEND	
\$ \$ ³	SINGLE POLE, SINGLE THROW TOGGLE SWITCH, ONE, TWO, OR THREE GANGED ('3' DENOTES 3-WAY)
	1x4 FLUORESCENT FIXTURE, STANDARD LENS, ELECTRONIC BALLAST, 2-18 TUBES, 120V/1PH
○	DOME FIXTURE BY OWNER
⊠	POT LIGHT BY OWNER
	EXIT SIGN WITH EMERGENCY LIGHTING EQUAL TO LUMACELL LMCE WITH BACK-UP BATTERY PACK
	DOUBLE HEAD EMERGENCY LIGHT EQUAL TO LUMACELL MQ212V12W
	SINGLE HEAD EMERGENCY LIGHT EQUAL TO LUMACELL MQ112V12W
BU-1	BACK UP BATTERY PACK
WP	EXTERIOR WALLPACK BY OWNER
OS	OCCUPANCY SENSOR

NO.	REVISION	DATE	BY	APPROVED
5	ISSUED FOR PRICING	05/22	G.O	G.V.W.O
4	RE-ISSUED FOR PERMIT	05/05	G.O	G.V.W.O
3	ISSUED FOR PERMIT	03/30	G.O	G.V.W.O
2	RE- ISSUED FOR COORDINATION	03/20	G.O	G.V.W.O
1	ISSUED FOR COORDINATION	01/24	G.O	G.V.W.O

REVISIONS

513 DUNDAS STREET EAST, WHITBY, ONTARIO
 KIYA DEVELOPMENTS LTD.

ELECTRICAL LIGHTING THIRD TO SIXTH FLOOR

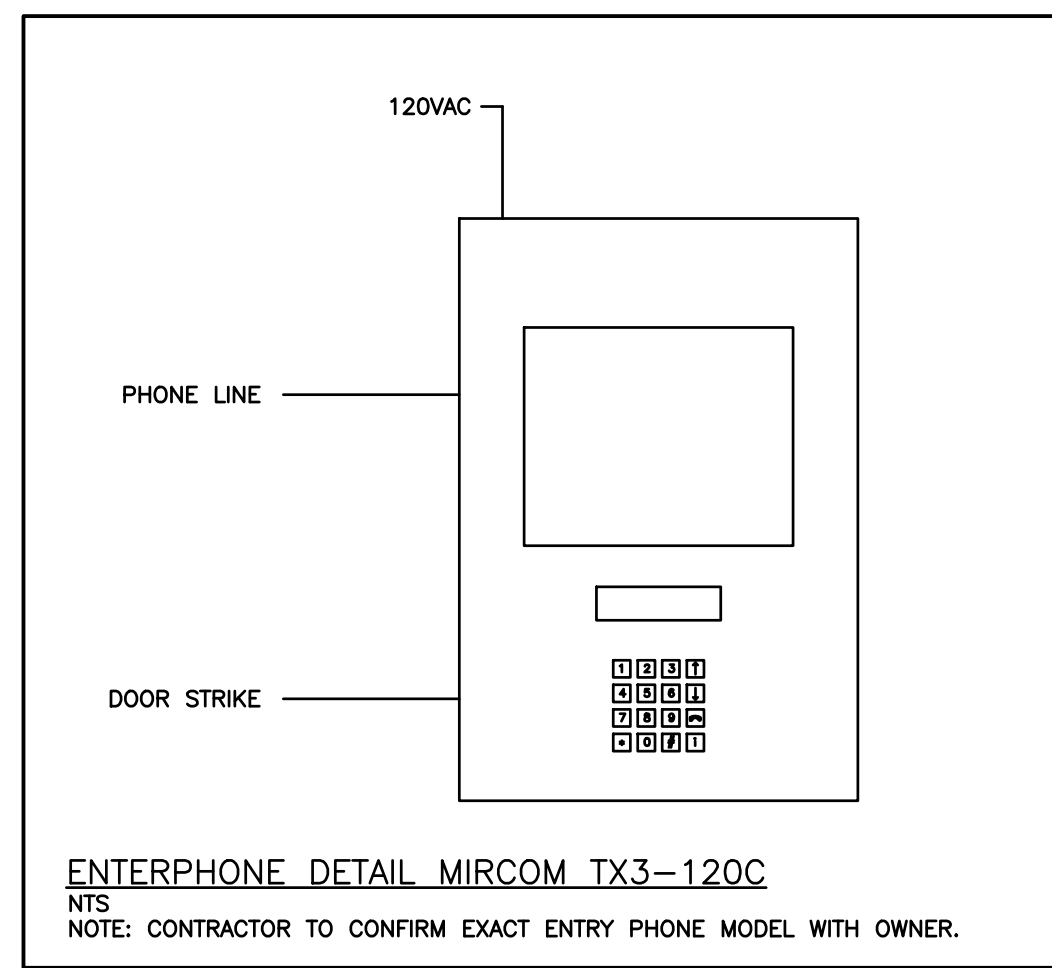
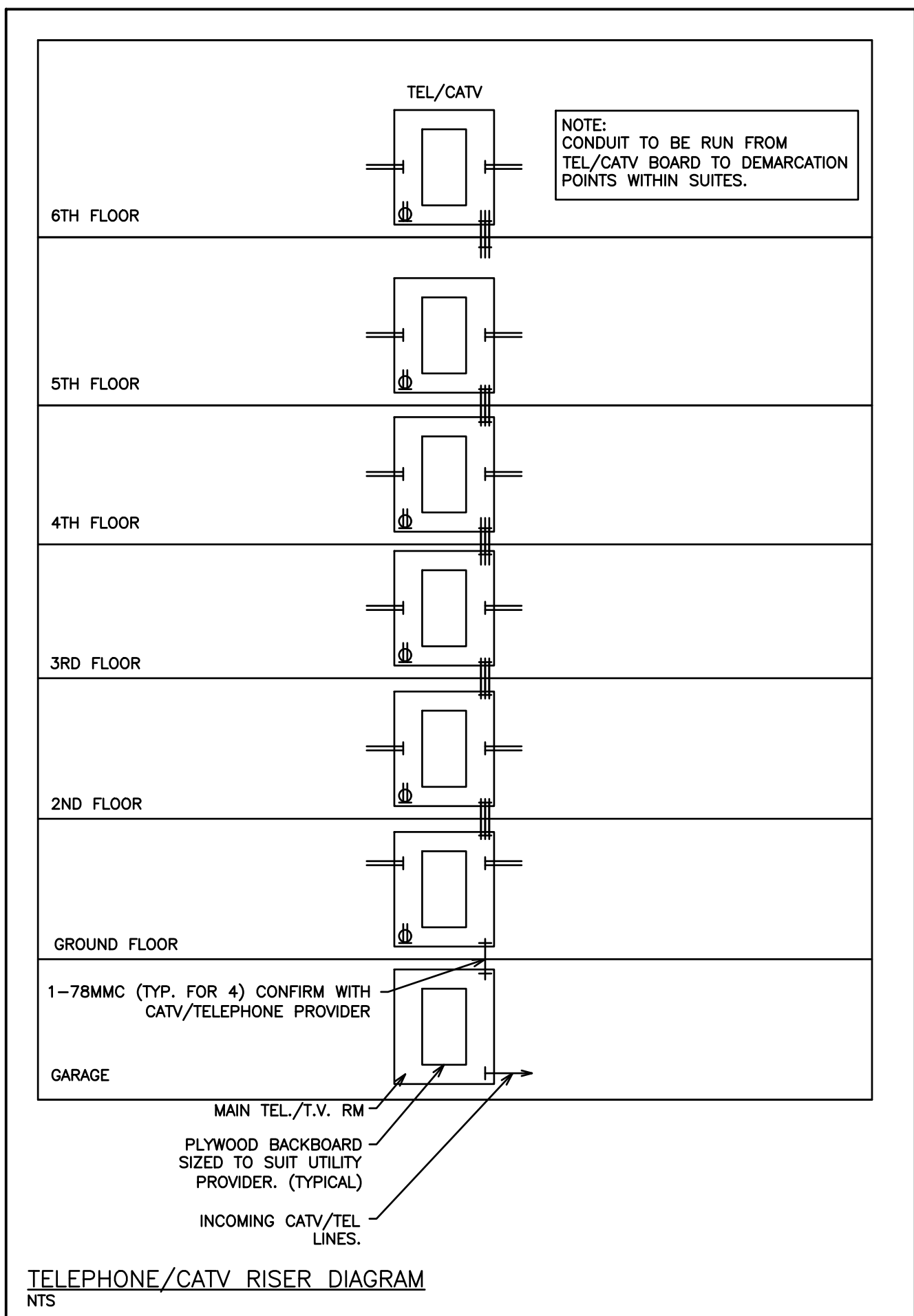
D. G. Biddle & Associates Limited
consulting engineers and planners

96 KING STREET EAST • OSHAWA, ON L1H 1B6
 PHONE (905)576-8500 • FAX (905)576-9730
 INFO@DGBIDDLE.COM

SCALE: 1:100	PROJECT NO. 116194
DRAWN BY: J.E.C	DRAWING NO. E2.4
DESIGN BY: J.E.C/G.V.W.O	
CHECKED BY: G.V.W.O	CAD FILE: 116194_M2
DATE: MAY 2020	PLOT DATE: 05/22/20
	SUBMISSION: PRICING

FIRE ALARM ZONES

ZONE	ALARM
1	BASEMENT
2	GROUND FLOOR
3	SECOND FLOOR
4	THIRD FLOOR
5	FOURTH FLOOR
6	FIFTH FLOOR
7	SIXTH FLOOR
8	EAST STAIRWELL
9	WEST STAIRWELL
10	ELEVATOR SHAFT
11	ELEVATOR SHAFT
12	GARAGE SPRINKLER (FS)
13	GROUND FLOOR SPRINKLER (FS)
14	SECOND FLOOR SPRINKLER (FS)
15	THIRD FLOOR SPRINKLER (FS)
16	FOURTH FLOOR SPRINKLER (FS)
17	FIFTH FLOOR SPRINKLER (FS)
18	SIXTH FLOOR SPRINKLER (FS)
19	GARBAGE ROOM SPRINKLER (FS)
20	MAIN ALARM VALVE
21	DUCT SMOKE (MAU-1)
22	SPARE
23	SPARE
24	SPARE
25	SPARE
26	SPARE
27	SPARE
28	SPARE
29	SPARE
30	SPARE
31	SPARE
32	SPARE
33	SPARE
34	SPARE
35	SPARE
36	SPARE
37	SPARE
38	SPARE
ZONE	SUPERVISORY
39	SPRINKLER - POWER LOSS (EXCESS PRESS PUMP)
40	SPRINKLER - BACKFLOW PREVENTER INLET (SV)
41	SPRINKLER - BACKFLOW PREVENTER OUTLET (SV)
42	SPRINKLER - BACKFLOW PREVENTER INLET (SV)
43	SPRINKLER - BACKFLOW PREVENTER OUTLET (SV)
44	SPRINKLER - GARAGE (DRY)
45	SPRINKLER - GROUND FLOOR (SV)
46	SPRINKLER - SECOND FLOOR (SV)
47	SPRINKLER - THIRD FLOOR (SV)
48	SPRINKLER - FOURTH FLOOR (SV)
49	SPRINKLER - FIFTH FLOOR (SV)
50	SPRINKLER - SIXTH FLOOR (SV)
51	SPRINKLER - GARBAGE ROOM (SV)
52	STANDPIPE WEST
53	STANDPIPE CENTER
54	STANDPIPE EAST
55	STANDPIPE MAIN
56	WET SPRINKLER MAIN
57	SPARE
58	SPARE
59	SPARE
60	SPARE
61	SPARE
62	SPARE
63	SPARE
64	SPARE
65	SPARE
66	SPARE
CIRCUITS	
HORN CIRCUIT BASEMENT COMMON	
HORN CIRCUIT GROUND FLOOR COMMON	
HORN CIRCUIT GROUND FLOOR SUITES	
HORN CIRCUIT SECOND FLOOR COMMON	
HORN CIRCUIT SECOND FLOOR SUITES	
HORN CIRCUIT THIRD FLOOR COMMON	
HORN CIRCUIT THIRD FLOOR SUITES	
HORN CIRCUIT FOURTH FLOOR COMMON	
HORN CIRCUIT FOURTH FLOOR SUITES	
HORN CIRCUIT FIFTH FLOOR COMMON	
HORN CIRCUIT FIFTH FLOOR SUITES	
HORN CIRCUIT SIXTH FLOOR COMMON	
HORN CIRCUIT SIXTH FLOOR SUITES	
FAN SHUT DOWN (MAU-1)	
NOTES:	
1) PROVIDE RELAYS AS REQUIRED FOR ELEVATOR RECALL.	
2) PROVIDE ISOLATION MODULES ON ADDRESSABLE LOOP AS REQUIRED BY CODE.	
3) SYNCHRONIZE ALL SIGNAL CIRCUITS EQUIPPED WITH STROBES.	



ELECTRIC FORCE FLOW HEATER SCHEDULE

TAG	MANUFACTURER	MODEL	COLOUR	MOUNTING	HEATING	AIR FLOW	VOLTAGE	DIMENSIONS	CONTROLS
FF-1	OUELLET	OACO4000	WHITE	SURFACE	4000 Watts	160 cfm	208V	16-1/8"W x 22-1/16"H x 4-5/16"D	BUILT IN TAMPERPROOF THERMOSTAT
FF-2	OUELLET	OACO2000	WHITE	SURFACE	2000 Watts	160 cfm	208V	16-1/8"W x 22-1/16"H x 4-5/16"D	BUILT IN TAMPERPROOF THERMOSTAT

NOTES: ADDITIONAL COSTS INCURRED AS A RESULT OF ANY ALTERNATIVE MODELS ARE AT THE EXPENSE OF THE CONTRACTOR. CONFIRM WITH ALL DRAWINGS & SITE CONDITIONS PRIOR TO ORDERING.

ELECTRIC BASEBOARD HEATER SCHEDULE

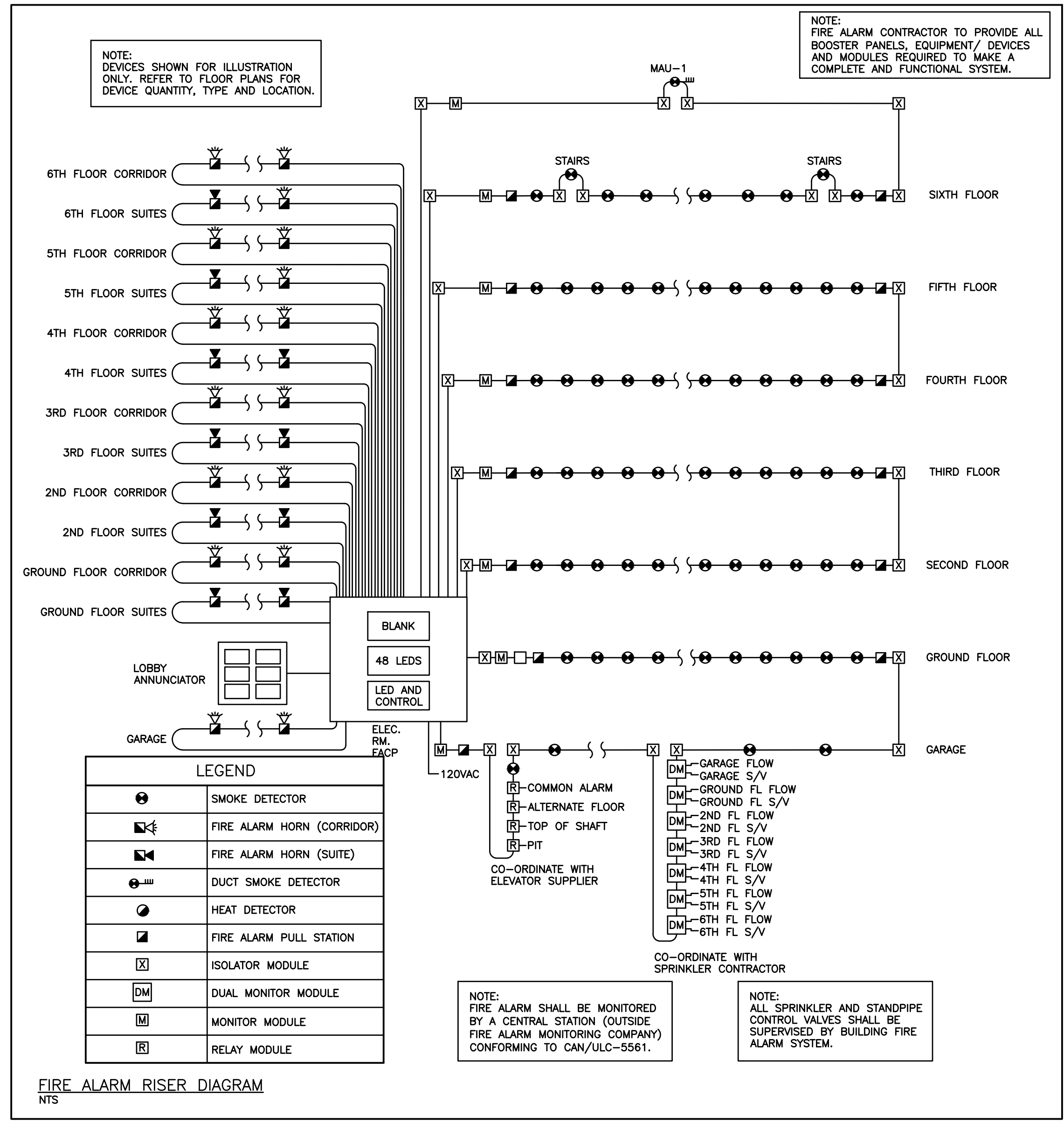
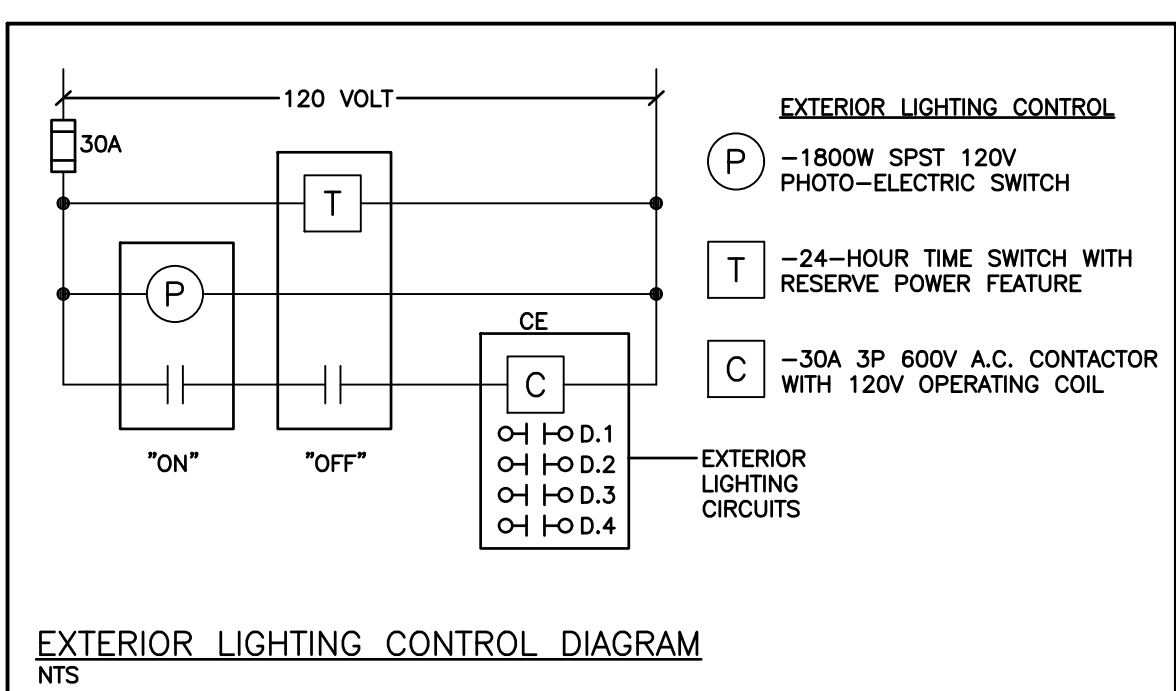
TAG	MANUFACTURER	MODEL	COLOUR	HEATING	VOLTAGE	DIMENSIONS	CONTROLS
BB-1	OUELLET	OFM01000	WHITE	1000 Watts	240V	47-1/2"L x 5-13/16"H x 2-7/16"D	BUILT IN TAMPERPROOF THERMOSTAT
BB-2	OUELLET	OFM0500	WHITE	500 Watts	240V	27-3/16"L x 5-13/16"H x 2-7/16"D	BUILT IN TAMPERPROOF THERMOSTAT

NOTES: ADDITIONAL COSTS INCURRED AS A RESULT OF ANY ALTERNATIVE MODELS ARE AT THE EXPENSE OF THE CONTRACTOR.

EMERGENCY LIGHT BACK-UP UNIT SCHEDULE

TAG	MANUFACTURER	MODEL
(BU-2) & (BU-3)	LUMACELL	RG12S-100-2-LD10-AT
(BU-4) - (BU-7)	LUMACELL	RG12S-144-2-LD10-AT
(BU-1) & (BU-8)	LUMACELL	RG12S-200-2-LD10-AT

NOTE: CONTRACTOR TO CONFIRM FINAL LOADING PRIOR TO ORDER



NO.	REVISION	DATE	BY	APPROVED
5	ISSUED FOR PRICING	05/22	G.O	G.V.W.O
4	RE-ISSUED FOR PERMIT	05/05	G.O	G.V.W.O
3	ISSUED FOR PERMIT	03/30	G.O	G.V.W.O
2	RE-ISSUED FOR COORDINATION	03/20	G.O	G.V.W.O
1	ISSUED FOR COORDINATION	01/24	G.O	G.V.W.O

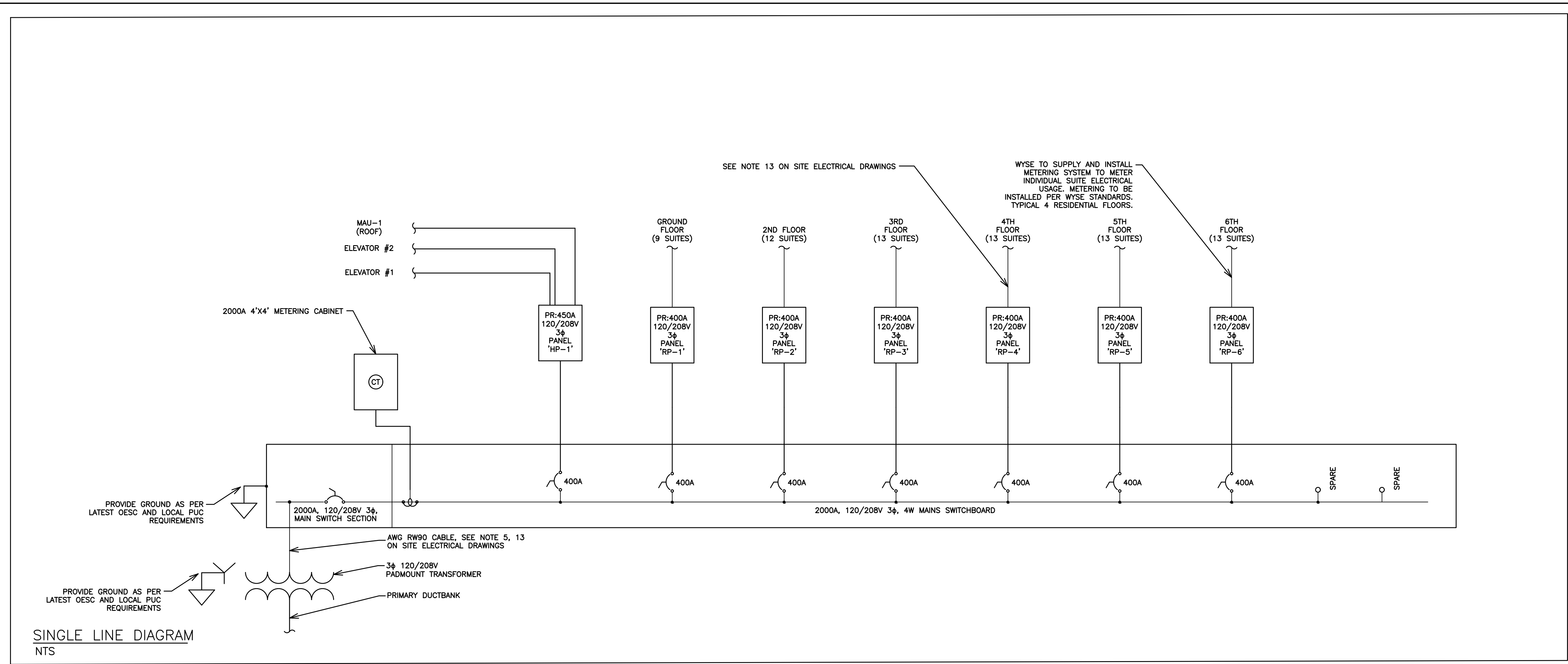
513 DUNDAS STREET EAST, WHITBY, ONTARIO
KIYA DEVELOPMENTS LTD.

ELECTRICAL POWER AND LIGHTING DETAILS

D.G. Biddle & Associates Limited
consulting engineers and planners

96 KING STREET EAST • OSHAWA, ON L1H 1B6
PHONE (905)576-8500 • FAX (905)576-9730
INFO@DGBIDDLE.COM

SCALE: 1:100	PROJECT NO. 116194
DRAWN BY: J.E.C	DRAWING NO. E3.1
DESIGN BY: J.E.C/G.V.W.O	
CHECKED BY: G.V.W.O	CAD FILE: 116194_M2
DATE: MAY 2020	PLOT DATE: 05/22/20
	SUBMISSION: PRICING



- GENERAL ELECTRICAL NOTES**
- GENERAL:
 - ARRANGE FOR ESA INSTALLATION PERMIT AND INSPECTION AND FORWARD A COPY OF THE ESA CERTIFICATE TO THE ENGINEER UPON ACCEPTANCE.
 - ENSURE THAT ALL ELECTRICAL EQUIPMENT SUPPLIED BY OTHER TRADES IS SUITABLE FOR THE RESPECTIVE VOLTAGE. CONFIRM POWER REQUIREMENTS OF ALL OWNER SUPPLIED EQUIPMENT.
 - ALL CUTTING AND PATCHING REQUIRED FOR THE WORK OF THIS DIVISION SHALL BE CARRIED OUT BY THIS DIVISION. NO CHASING BLOCKWORK WILL BE ALLOWED. BE RESPONSIBLE AND PAY FOR ANY DAMAGE TO THE BUILDING INCURRED BY WORK OF THIS DIVISION.
 - SUBMIT COPIES OF SHOP DRAWINGS FOR REVIEW AND RECORDS.
 - ALL MATERIALS USED THROUGHOUT SHALL BE NEW, OF BEST QUALITY C.S.A. APPROVED AND OF ONE MANUFACTURE. WHEREVER TRADE NAMES ARE NOT USED TO DESCRIBE MATERIALS, THESE MATERIALS SHALL BE OF BEST AVAILABLE QUALITY AND MANUFACTURE. OBTAIN AND PAY FOR SPECIAL HYDRO INSPECTION OF SPECIFIED NON-C.S.A. ELECTRICAL EQUIPMENT.
 - PROVIDE ALL CONDUIT, WIRING, BOXES, SWITCHES, OUTLETS, DEVICES, ETC., AS REQUIRED. MAKE FINAL CONNECTIONS TO VIBRATING EQUIPMENT WITH FLEXIBLE CONDUIT.
 - PROVIDE ALL HANGERS, INSERTS AND SUPPORTS OF APPROVED TYPES REQUIRED FOR THE WORK OF THIS DIVISION. PROVIDE CONDUIT FOR ALL SERVICES PENETRATING THE FLOOR SLAB. SEAL ALL PENETRATIONS THROUGH FLOOR SLABS WITH AN APPROVED NON-SHRINK, WATERPROOF AND FIREPROOF SEALANT APPROVED BY ARCHITECT. NO CONDUITS OR EQUIPMENT SHALL BE MOUNTED DIRECTLY FROM ROOF DECK. PROVIDE ALL NECESSARY UNISTRUT OR OTHER MOUNTING DETAILS TO ENABLE SUPPORT FROM TOP CHORD OF JOISTS.
 - ALL CONDUIT SHALL BE RIGID STEEL THICK WALLED OR EMT THINWALL WITH STEEL SET SCREW COUPLINGS AND CONNECTORS WITH INSULATED THROATS UNLESS OTHERWISE NOTED. EXPOSED CONDUITS AND WIREMOLD CHANNELS SHALL BE NEAT IN APPEARANCE, RUN PARALLEL TO BUILDING LINES AND CONCENTRIC RIGHT ANGLE BENDS ONLY SHALL BE USED.
 - ALL EMPTY CONDUITS SHALL BE COMPLETE WITH NYLON FISH WIRE.
 - ALL WIRING SHALL BE MINIMUM #12 GAUGE COPPER, EXCEPT AS OTHERWISE NOTED. ALL WIRING SHALL BE 600 VOLT TYPE RW90, EX CABLE MAY BE USED WHERE PERMITTED BY CODE IN CEILING SPACE FOR FINAL CONNECTION TO LIGHT FIXTURE AND FROM CEILING DISTRIBUTION BOXES DOWN PARTITIONS TO RECEPTACLES ONLY. MINIMUM SIZE WIRING FOR DC WIRING SHALL BE #10 GAUGE. MAXIMUM VOLTAGE DROP SHALL NOT EXCEED 2 PERCENT.
 - PROVIDE GROUND WIRES WITH ALL FEEDERS AND CIRCUITS IN ACCORDANCE WITH APPLICABLE CODES AND HYDRO REQUIREMENTS. PROVIDE MAIN GROUND TO HYDRO APPROVAL.
 - CO-ORDINATE WITH OTHER TRADES IN LAYING OUT OF THE WORK SO AS NOT TO CONFLICT WITH THE WORK OF OTHER TRADES. CARRY OUT WORK PROMPTLY WHICH MAY INTERFERE WITH THE WORK SCHEDULE OF OTHER TRADES.
 - MECHANICAL TRADES WIRING: PROVIDE ALL CONDUIT, WIRING, SPLITTERS, OUTLET BOXES AND DISCONNECT SWITCHES AS SHOWN. ALL MOTORS, STARTERS AND CONTROL WIRING PROVIDED UNDER DIVISION 15. INSTALL ALL STARTERS AND WIRE COMPLETE.
 - INSTALL ALL LIGHTING AND POWER CIRCUITS TO MEET CODES.
 - CLEARLY MARK ALL EXPOSED CONDUIT, PULL BOXES, JUNCTION BOXES, ETC., TO INDICATE THE NATURE OF THE SERVICE.
 - INSTALL ALL LIGHTING AND POWER CIRCUITS TO MEET CODES.
 - PROVIDE LAMACOID NAMEPLATES AND TYPED DIRECTORIES FOR ALL PANELS.
 - CLEAN AND TEST ALL EQUIPMENT BEFORE FINAL ACCEPTANCE IS GIVEN FOR THE WORK.
 - AFTER THE WORK IS COMPLETED, ONE A WRITTEN GUARANTEE FOR ONE YEAR COVERING WORKMANSHIP AND MATERIALS. REPAIR OR REPLACE, WITHOUT EXPENSE TO THE OWNER, ANY DEFECTS DUE TO WORKMANSHIP OR MATERIALS WHICH IN THE OWNER'S OPINION, ARE NOT DUE TO MISUSE OR NEGLIGENCE.
 - MATERIALS:
 - COVER PLATES:
 - COVER PLATES FOR RECEPTACLES, SWITCHES, PILOT LIGHTS, TELEPHONE OUTLETS AND OTHER DEVICES REQUIRING COVER PLATES FOR FLUSH MOUNTED BOXES SHALL BE METAL, STAINLESS STEEL #18-8 TYPE 302, UNLESS OTHERWISE NOTED.
 - WEATHERPROOF COVER PLATES SHALL BE DIECAST CORROSION RESISTANT ALUMINUM TYPE WITH TWO SEPARATE LIDS FOR DUPLEX RECEPTACLES SUITABLE FOR MOUNTING ON F.S. TYPE BOXES. ALL WEATHERPROOF COVER PLATES SHALL HAVE RUBBER OR NEOPRENE GASKETS.
 - PLATES FOR SURFACE MOUNTED CAST BOXES SHALL BE GALVANIZED FORMED STEEL TYPE. COVER PLATES FOR FLUSH MOUNTED EQUIPMENT SHALL BE SUPPLIED OF QUALITY AND PERFORMANCE SPECIFIED BY THE MANUFACTURER OF THE EQUIPMENT.
 - COVER PLATES OF QUALITY SPECIFIED SHALL BE PASS & SEYMOUR, BRYANT LEVITON, SMITH & STONE OR HARVEY HUBBELL.
 - LIGHT SWITCHES:
 - SWITCHES SHALL BE, UNLESS OTHERWISE INDICATED, BRYANT QUIET TYPE WITH WHITE SPECIFICATION GRADE FOR 120V AND HEAVY DUTY GRADE FOR 347V. LIGHT SWITCHES OF QUALITY AS MANUFACTURED BY BRYANT, P & S, ARROW HART, LEVITON AND HUBBELL SHALL BE CONSIDERED AS ACCEPTABLE AS SPECIFIED ALTERNATES.
 - RECEPTACLES:
 - RECEPTACLES SHALL BE, UNLESS OTHERWISE INDICATED, U GROUND TYPE, WHITE SCREW TERMINAL TYPE.
 - RECEPTACLES SHALL BE SPECIFICATION GRADE.
 - CONFIRM ALL LOCATIONS AND OUTLETS PRIOR TO INSTALLATION. ALLOW TO RELOCATE ANY OUTLET WITHIN 10'-0" OF SPECIFIED LOCATION, PRIOR TO INSTALLATION.
 - PROVIDE ALL CONCRETE WORK REQUIRED FOR ELECTRICAL WORK IN ACCORDANCE WITH ARCHITECTURAL DIVISION OF SPECIFICATION.
 - DISCONNECTS:
 - DISCONNECT SWITCHES FOR HVAC EQUIPMENT MUST BE INSTALLED WITHIN 10'.
 - MOTORS OTHER THAN AIR CONDITIONERS MUST HAVE DISCONNECT WITHIN SIGHT AND 30' OF THE MOTOR AND/OR STARTER.
 - CONDUITS:
 - EMT (ELECTRICAL METALLIC TUBING) MUST BE USED IN THE FOLLOWING INDOOR APPLICATIONS:
 - ALL EXPOSED AREAS (USE WIREMOLD ON EXPOSED WALLS IN FINISHED AREAS WHERE EXPOSED WIRING HAS BEEN APPROVED).
 - T-BAR CEILING SPACES
 - ATTIC SPACES
 - CRAWL SPACES
 - FLEXIBLE CABLE IS ONLY ACCEPTABLE IN THE FOLLOWING INDOOR AND OUTDOOR APPLICATIONS:
 - LAST 5' FOR FINAL CONNECTION TO INDOOR MECHANICAL EQUIPMENT
 - ALL OUTDOOR WIRING
 - LAST 5' FOR FINAL CONNECTION TO LIGHTING AND SMALL EQUIPMENT/COMPONENTS IN CEILING SPACES
 - CONCEALED IN DRYWALL WALLS AND DRYWALL CEILINGS
 - THROUGH HOLES IN CONCRETE, BRICKS OR STEEL STUDS PROVIDED IT IS NOT SUBJECT TO MECHANICAL DAMAGE.
 - ROMEX IS AN ACCEPTABLE ALTERNATE FOR ALL INDOOR WIRING IN WOOD CONSTRUCTION BUILDINGS.
 - WHERE CEILING SPACE IS USED AS A RETURN AIR PLENUM, ALL WIRING SHALL CONFORM TO CODES FOR THIS APPLICATION.

- GENERAL REQUIREMENTS FOR ELECTRICAL WORK**
- SCOPE OF WORK:
 - CONFORM TO ALL DRAWINGS RELATED TO THIS PROJECT.
 - COMPLY WITH THE REQUIREMENTS OF THE CURRENT EDITION OF THE O.B.C., ALL OTHER APPLICABLE CODES, REGULATIONS, BY-LAWS AND OFFICIAL STANDARDS ACCORDING TO THE REQUIREMENTS AND INTERPRETATIONS OF THE AUTHORITIES HAVING JURISDICTION. THESE CODES AND STANDARDS CONSTITUTE AN INTEGRAL PART OF THESE SPECIFICATIONS. IN CASE OF CONFLICT, THE CODES TAKE PRECEDENCE OVER THE CONTRACT DOCUMENTS.
 - EXAMINATION OF SITE AND INFORMATION:
 - EACH SUBCONTRACTOR, BEFORE TENDERING, SHALL EXAMINE THE SITE, THE ARCHITECTURAL, STRUCTURAL, MECHANICAL, AND ELECTRICAL DRAWINGS AND THEY SHALL FAMILIARIZE THEMSELVES WITH THE BUILDING CONSTRUCTION AND FINISH IN ORDER THAT THEIR TENDER MAY INCLUDE EVERYTHING NECESSARY FOR THE PROPER COMPLETION OF THE WORK.
 - IT SHALL BE THIS SUBCONTRACTOR'S RESPONSIBILITY THAT MATERIAL AND EQUIPMENT BE BROUGHT INTO THE BUILDING IN SUCH ASSEMBLIES AND SIZES AS TO ENTER INTO THE SPACE WHERE THEY ARE TO BE LOCATED AND TO BE SMALL ENOUGH TO BE HOSTED INTO THE BUILDING WITHOUT DIFFICULTY. ANY CUTTING, PATCHING, ETC., INVOLVED IN GETTING LARGE ASSEMBLIES INTO PLACE, SHALL BE THE RESPONSIBILITY OF THE SUBCONTRACTOR.
 - RELATIONSHIP TO OTHER TRADES:
 - THIS SUBCONTRACTOR SHALL CONFER WITH ALL OTHER CONTRACTORS INSTALLING EQUIPMENT, PIPING, OTHER WORK, FOUNDATIONS, ETC., WHICH MAY AFFECT THEIR INSTALLATION, AND THEY SHALL ARRANGE THEIR EQUIPMENT, PIPING, ETC., IN PROPER RELATION WITH OTHER APPARATUS, AND WITH THE BUILDING CONSTRUCTION. THIS SUBCONTRACTOR SHALL ALSO CONFIRM THE ELECTRICAL CHARACTERISTICS OF THE PROJECT AND ORDER EQUIPMENT ACCORDINGLY.
 - SPECIAL CARE SHALL BE TAKEN IN THE INSTALLATION OF ALL WORK, TO SEE THAT THEY ALL COME WITHIN THE LIMITS ESTABLISHED BY THE FINISH LINES OF ALL WALLS, FLOORS, CEILINGS, ETC.
 - THIS SUBCONTRACTOR SHALL NOTIFY THE CONTRACTOR AND OTHER SUBCONTRACTORS WHO ARE CONCERNED, OF ALL OPENINGS, FOUNDATION WORK, HANGERS, INSERTS, ANCHORS, OR OTHER PROVISIONS NECESSARY IN THEIR WORK FOR THE INSTALLATION OF THE SUBCONTRACTORS WORK, AND THEY SHALL FURNISH ALL INFORMATION AND NECESSARY MATERIALS IN AMPLE TIME SO THAT PROPER PROVISIONS CAN BE MADE FOR SAME, AND SHALL SUPPLY AND CORRECTLY AND ACCURATELY PLACE ALL INSERTS, SLEEVES, ANCHORS, ETC.
 - FAILURE TO COMPLY WITH THESE REQUIREMENTS ON THE PART OF THIS SUBCONTRACTOR WILL RENDER THEM RESPONSIBLE FOR THE COST OF CUTTING OPENINGS, INSTALLING HANGERS AND OTHER PROVISIONS AT A LATER DATE, AND THE SUBSEQUENT PATCHING, ETC., THEREBY REQUIRED.
 - NO CUTTING SHALL BE DONE WITHOUT PERMISSION. ALL SUCH WORK SHALL BE DONE BY TRADES-PERSONS SKILLED IN AND CERTIFIED FOR THIS PARTICULAR TRADE.
 - EACH SUBCONTRACTOR IS TO BE AN EXPERT IN THEIR TRADE.
 - SHOP DRAWINGS:
 - EACH SUBCONTRACTOR SHALL SUBMIT SHOP DRAWINGS TO THE ARCHITECT FOR REVIEW OF MATERIAL, EQUIPMENT AND APPARATUS BEING PROVIDED BY THEM. THESE SHALL SHOW IN DETAIL THE DESIGN AND CONSTRUCTION AND PERFORMANCE OF ALL APPARATUS, ETC.
 - THE ENGINEER'S REVIEW OF SHOP DRAWINGS IS GENERAL AND IS NOT INTENDED TO SERVE AS A FINAL CHECK AND IT SHALL NOT RELIEVE THE SUBCONTRACTOR OF THE RESPONSIBILITY FOR ERRORS OR OF THE NECESSITY OF CHECKING THE DRAWINGS THEMSELVES, OR OF FURNISHING ANY OF THE MATERIALS AND PERFORMING THE WORK REQUIRED BY THE DRAWINGS AND SPECIFICATIONS TO THE FULL INTENT OF THIS SPECIFICATION.
 - BEFORE SUBMISSION, THIS SUBCONTRACTOR SHALL CHECK ALL SHOP DRAWINGS FOR ACCURACY OF DETAILS, DIMENSIONS, ETC. AND SHALL BE SATISFIED THAT THE DRAWINGS ARE CORRECT AND THAT THE EQUIPMENT WILL FIT PROPERLY IN THE ALLOTTED SPACE. THE SHOP DRAWINGS SHALL BE STAMPED BY THIS SUBCONTRACTOR WITH THE WORD "REVIEWED", THE DATE OF APPROVAL, AND THE FIRM'S NAME PRIOR TO SUBMISSION.
 - REQUIREMENTS OF INSPECTION DEPARTMENTS:
 - ALL WORK SHALL BE INSTALLED IN ACCORDANCE WITH ALL LAWS AND REGULATIONS OF ALL AUTHORITIES HAVING JURISDICTION IN EACH CASE, PARTICULARLY ALL AFFECTED DEPARTMENTS OF THE MUNICIPALITY AND PROVINCE. ELECTRICAL EQUIPMENT SUPPLIED MUST CONFORM TO THE REGULATIONS OF CSA AND THE LOCAL UTILITY. ANYTHING NECESSARY TO MAKE THE WORK COMPLY WITH THESE REQUIREMENTS SHALL BE PROVIDED BY THIS SUBCONTRACTOR WITHOUT ADDITIONAL COST TO THE OWNERS IF IT REASONABLY COULD HAVE BEEN FORESEEN WHEN TENDERING.
 - EACH SUBCONTRACTOR SHALL PREPARE DRAWINGS IN ADDITION TO ENGINEER'S DRAWINGS AS MAY BE REQUIRED BY VARIOUS INSPECTION DEPARTMENTS HAVING JURISDICTION, AND OBTAIN THEIR APPROVAL BEFORE PROCEEDING WITH THE WORK.
 - IN THE EVENT THAT THE INSPECTION DEPARTMENT'S REQUEST DEVIATES FROM THE ENGINEER'S LAYOUT, THE SUBCONTRACTOR SHALL CONSULT ENGINEER BEFORE PROCEEDING WITH THE SAME. IT SHALL BE NOTED THAT ENGINEER'S DRAWINGS ARE GENERALLY ACCEPTABLE TO INSPECTION DEPARTMENTS AND MINOR SUPPLEMENTS NEED ONLY BE MADE BY SUBCONTRACTORS.
 - CERTIFICATES, PERMITS, FEES:
 - SUBCONTRACTORS SHALL GIVE ALL NECESSARY NOTICES, OBTAIN ALL REQUIRED PERMITS AND PAY ALL FEES INCLUDING PAYMENT FOR STREET CONNECTIONS TO STORM, SANITARY, WATER AND GAS IN ORDER THAT THE WORK HEREIN SPECIFIED MAY BE CARRIED OUT AND THEY SHALL FURNISH ANY CERTIFICATES NEEDED AS EVIDENCE THAT THE WORK INSTALLED CONFORMS WITH THE LAWS AND REGULATIONS OF THE MUNICIPALITY AND PROVINCE.
 - GUARANTEE:
 - THIS SUBCONTRACTOR SHALL GUARANTEE ALL MATERIAL AND WORKMANSHIP USED IN THE WORK TO BE IN STRICT ACCORDANCE WITH THE SPECIFICATIONS, OF BEST QUALITY AND TYPE OBTAINABLE TO GIVE FIRST-CLASS CONSTRUCTION AND PROPER EFFICIENT OPERATION, AND FREE FROM ANY DEFECTS. ANY SUCH DEFECTS WHICH MAY APPEAR IN ANY OF THE WORK WITHIN ONE YEAR AFTER WRITTEN ACCEPTANCE OF THEIR WORK, SHALL BE REPAIRED AND REPLACED BY THIS SUBCONTRACTOR WITHOUT ADDITIONAL EXPENSE TO THE OWNER, WHERE SUCH DEFECTS OCCUR. THIS SUBCONTRACTOR SHALL BE HELD RESPONSIBLE FOR ALL COSTS INCURRED IN MAKING THE DEFECTIVE WORK GOOD. THIS SHALL NOT OBSOLETE ANY LONGER WARRANTIES ON SPECIFIC ITEMS OF EQUIPMENT.
 - ALL INJURIES TO ADJACENT WORK, PARTICULARLY PLASTER, WOOD FINISHES OR OTHER MATERIALS, OR DAMAGE TO OTHER EQUIPMENT, CAUSED BY SUCH DEFECTS OF THIS SUBCONTRACTOR'S WORK OR BY SUBSEQUENT REPLACEMENT AND REPAIR, SHALL BE MADE GOOD AT THE EXPENSE OF THIS SUBCONTRACTOR. ALL REPAIR WORK SHALL BE DONE BY TRADES RESPONSIBLE FOR THE ORIGINAL WORK.
 - DRAWINGS:
 - THE DRAWINGS SHOW THE APPROXIMATE LOCATION FOR SPECIAL APPARATUS AND THE MATERIALS THROUGHOUT THE BUILDING. THE ARRANGEMENT SHOWN ON THE DRAWING IS MORE OR LESS DIAGRAMMATIC AND AS SUCH APPROXIMATE ONLY, AND MAY BE ALTERED, AS APPROVED BY THE ENGINEER, TO MEET REQUIREMENTS OF THE APPARATUS, ETC., AND OF THE BUILDING. EACH SUBCONTRACTOR SHALL BE HELD RESPONSIBLE FOR ALL MEASUREMENTS FOR THEIR WORK THROUGHOUT, AND THEY SHALL ARRANGE THEIR PIPING, WIRING AND APPARATUS TO CONFORM TO THE ARCHITECTURAL AND STRUCTURAL DETAILS IN A SATISFACTORY MANNER AND SHALL CO-OPERATE WITH OTHER CONTRACTORS TO ENSURE THAT WORK SHALL MEET ALL REQUIREMENTS OF DIVERSE CONTRACTS.
 - THE SUBCONTRACTOR IS PARTICULARLY CAUTIONED THAT SMALL SCALE ENGINEER'S PLANS MUST BE SUPPLEMENTED BY THEIR OWN DETAIL DRAWINGS WHERE NECESSARY FOR PROPER CO-ORDINATION OF THE WORK.
 - ITEMS SHOWN ON THE DRAWINGS BUT NOT SPECIFIED OR SPECIFIED BUT NOT SHOWN SHALL BE INCLUDED.
 - ITEMS OBVIOUSLY REQUIRED TO PROVIDE A COMPLETE WORKING SYSTEM BUT NOT SPECIFIED NOR SHOWN SHALL BE INCLUDED.
 - RESPONSIBILITY AND LIABILITY:
 - EACH SUBCONTRACTOR SHALL SUPERVISE THE LAYING OUT OF THEIR WORK AND SHALL ARRANGE IT IN CO-OPERATION WITH OTHER WHO MAY BE WORKING ON THE PREMISES WHILE THE WORK OF THIS CONTRACT IS IN PROGRESS. THEY SHALL PROTECT FINISHED AND UNFINISHED WORK OF THIS CONTRACT AND/OR WORK OF OTHERS ON THE PREMISES UNTIL THE COMPLETED WORK HAS BEEN ACCEPTED.
 - THE SUBCONTRACTOR SHALL NOTIFY THE ENGINEER OF ANY DISCREPANCIES OR INCONSISTENCIES FOUND IN THE DRAWINGS OR SPECIFICATIONS BEFORE SUBMITTING THEIR TENDER. THEY SHALL ABIDE BY DECISIONS GIVEN TO THEM IN WRITING WITH REGARD TO SAME. EACH SUBCONTRACTOR IS CAUTIONED THAT THE WORK AS SHOWN IS INTENDED TO BE COMPLETE IN ALL RESPECTS AND THAT FAILURE ON THEIR PART TO NOTIFY THE ENGINEER OF ANY DISCREPANCIES WILL NOT RELIEVE THEM OF THE RESPONSIBILITY OF COMPLETING THE WORK AS INTENDED AT THE CONTRACT PRICE.
 - CLEAN-UP:
 - DURING THE COURSE OF CONSTRUCTION, EACH SUBCONTRACTOR SHALL KEEP THEIR WORK TIDY AND NOT ALLOW AN ACCUMULATION OF DEBRIS RESULTING FROM THEIR WORK.
 - UPON COMPLETION OF THEIR WORK THEY SHALL LEAVE THE PREMISES IN A BROOM-CLEAN CONDITION.
 - PROTECTION:
 - SUBCONTRACTORS ARE TO PROTECT THEIR WORK FROM CONSTRUCTION DIRT OR DAMAGE FROM ANY CAUSE. SECURELY PLUG AND CAP ALL OPENINGS IN PIPE, EQUIPMENT AND FIXTURES TO PREVENT OBSTRUCTIONS.
 - ELECTRICAL WIRING AND CONTROLS:
 - ALL POWER WIRING FOR MECHANICAL EQUIPMENT SHALL BE DONE BY THE ELECTRICAL DIVISION. THE MECHANICAL TRADE INVOLVED SHALL PROVIDE STARTERS, THERMOSTATS, VALVES, CONTROL TRANSFORMERS, RELAYS, ETC. ALL CONTROL WIRING SHALL BE DONE BY THE MECHANICAL CONTRACTOR, UNLESS OTHERWISE NOTED ELSEWHERE IN THIS SPECIFICATION.

NO.	REVISION	DATE	BY	APPROVED
5	ISSUED FOR PRICING	05/22	G.O	G.V.W.O
4	RE-ISSUED FOR PERMIT	05/05	G.O	G.V.W.O
3	ISSUED FOR PERMIT	03/30	G.O	G.V.W.O
2	RE- ISSUED FOR COORDINATION	03/20	G.O	G.V.W.O
1	ISSUED FOR COORDINATION	01/24	G.O	G.V.W.O

REVISIONS

513 DUNDAS STREET EAST, WHITBY, ONTARIO
KIYA DEVELOPMENTS LTD.

ELECTRICAL POWER AND LIGHTING DETAILS

D.G. Biddle & Associates Limited
consulting engineers and planners

96 KING STREET EAST • OSHAWA, ON L1H 1B6
PHONE (905) 776-8800 FAX (905) 776-9730
INFO@DGBIDDLE.COM

SCALE: 1:100	PROJECT NO. 116194
DRAWN BY: J.E.C	DRAWING NO. E3.2
DESIGN BY: J.E.C/G.V.W.O	
CHECKED BY: G.V.W.O	CAD FILE: 116194_M2
DATE: MAY 2020	PLOT DATE: 05/22/20 SUBMISSION: PRICING