

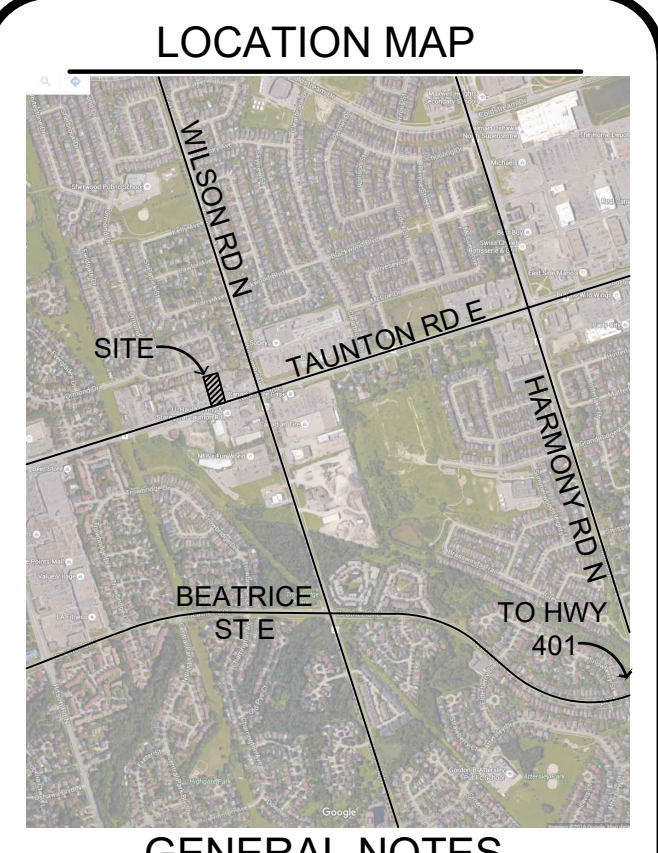
PLANT SCHEDULE SITE

TREES	QTY	BOTANICAL NAME	COMMON NAME	SIZE	CONT	REMARKS
AFA	2	Acer freemanii `Autumn Blaze`	Autumn Blaze Maple	60mm Cal.	W.B.	
ARM	3	Acer rubrum	Red Maple	60mm Cal.	W.B.	spring dug
SGM	2	Acer saccharum	Sugar Maple	60mm Cal.	W.B.	
SBC	3	Amelanchier canadensis	Serviceberry-Juneberry	40mm Cal.	W.B.	
PGW	3	Picea glauca	White Spruce	200cm Ht.	W.B.	
PSS	9	Picea omonka	Serbian Spruce	200cm Ht.	W.B.	
QAW	3	Quercus alba	White Oak	60mm Cal.	W.B.	spring dug
TC	3	Tilia cordata	Little-leaf Linden	60mm Cal.	W.B.	

SHRUBS	QTY	BOTANICAL NAME	COMMON NAME	SIZE	CONT	REMARKS
CAL AR2	54	Calamagrostis arundinacea `Karl Foerster`	Foerster's Feather Grass	1 gal	Potted	
HEM OR2	64	Hemerocallis x `Stella de Oro`	Stella de Oro Daylily	1 gal	Potted	
JUN BAR	18	Juniperus horizontalis `Bar Harbor`	Bar Harbor Creeping Juniper	50cm Ht.	Potted	
RIB ALP	6	Ribes alpinum	Alpine Currant	50cm Ht.	Potted	

REFERENCE NOTES SCHEDULE SITE

SYMBOL	DESCRIPTION	QTY	DETAIL
	Curbs and Gutters		
	Concrete Curb	179.9 m	1/2/L-D1
	Fences and Gates		
	Stainless Steel Tube Railing - 0.85m Ht.	7.3 m	7/L-D2
	Tactile Surface Indicator	2	1/3/L-D1
	Accessible Parking Sign	1	3/L-D2
	Stratus Shelter	1	6/L-D2
	Site Furnishings		
	Bike Rack - Trystan TC-7 - (7 Capacity)	1	6/L-D1
	Parking		
	Pre-cast concrete curb	23	7/L-D1
	Concrete Paving		
	Concrete Paving with 150mm depth of 19mm Crusher Run Limestone	262.6 m ²	14/L-D1
	Aggregate/Stone Surfacing		
	Water Washed Stone	1.3 m ²	5/L-D1
	Turf # Grasses		
	Sod over 150mm Topsoil	852.3 m ²	4/L-D1



GENERAL NOTES

THE LOCATION OF PROPERTY LINES, ELEVATIONS AND FACILITIES ON THIS PLAN WERE DRAWN ON THE BASIS OF A DIGITAL SITE PLAN OR SURVEY DATA PROVIDED BY OTHER CONSULTANTS.

IT IS THE RESPONSIBILITY OF THE CLIENT AND HIS CONTRACTORS TO CONFIRM THE ACCURACY OF THE SETBACKS, LOCATIONS AND GRADES ETC. ANY VARIATIONS BETWEEN EXISTING CONDITIONS AND THIS PLAN SHOULD BE ADVISED ON SITE AND REPORTED TO THE CONSULTING LANDSCAPE ARCHITECT TO DETERMINE THE IMPACT OF THE VARIATIONS ON THE SUITABILITY OF THE PROPOSED DEVELOPMENT.

CONSTRUCTION MUST CONFORM TO ALL CODES AND REQUIREMENTS OF AUTHORITIES HAVING JURISDICTION.

REVISIONS

NO.	DATE	NOTES	BY
7	2020/07/20	REVISED AS PER COMMENTS	KMR
6	2020/05/19	REVISED AS PER UPDATED SITE PLAN	LZH
5	2018/06/25	Tender	AW
4	2018/11/01	3rd SUBMISSION	RP
3	2018/08/16	2nd SUBMISSION	ST
2	2018/06/22	1st SUBMISSION	TJM
1	2018/06/15	LANDSCAPE PLAN	TJM

THESE LANDSCAPE DRAWINGS SHALL ONLY BE USED FOR THE PURPOSES INDICATED BELOW AS NOTED AND WHEN SIGNED BY THE CONSULTING LANDSCAPE ARCHITECT.

	CONCEPTUAL		TENDER
	PRELIMINARY		CONTRACT
	SITE PLAN		CONSTRUCTION
	PERMIT		AS-BUILT



HENRY KORTEKAAS & ASSOCIATES INC.
 LANDSCAPE ARCHITECTS, ARBORISTS, ENVIRONMENTAL & RECREATIONAL PLANNERS
 599 LIVERPOOL ROAD TEL: 905-888-5292
 PICKERING, ON L1W 1R1 EMAIL: INFO@HKLCA.CA

THESE DRAWINGS ARE INSTRUMENTS OF SERVICE AND THE LANDSCAPE ARCHITECT RETAINS OWNERSHIP OF THESE DRAWINGS. THEY ARE FOR SITE PLAN APPROVAL ONLY AND MAY REQUIRE FURTHER CONSTRUCTION DETAILING AND COORDINATION WITH OTHER ASSOCIATED PROFESSIONAL DESIGN SERVICES BEFORE ACTUAL TENDER AND CONSTRUCTION COMMENCES. DIMENSIONS ARE TO BE VERIFIED PRIOR TO CONSTRUCTION. DRAWINGS ARE NOT TO BE SCALED. IT IS ADVISED THAT CONTRACTORS CONTACT THE LANDSCAPE ARCHITECT PRIOR TO CONSTRUCTION TO ENSURE THE USE OF THE LATEST REVISED DRAWINGS. THE LANDSCAPE ARCHITECT IS NOT LIABLE FOR ERRORS OR OMISSIONS ARISING FROM UTILIZATION OF THESE PLANS BEFORE THE SAID DRAWINGS ARE SCALED, SIGNED AND DATED. THE LANDSCAPE ARCHITECT IS CONTRACTED TO PROVIDE CONSTRUCTION ADMINISTRATION AND CERTIFICATION SERVICES BY THE OWNER. ALL APPARENT DISCREPANCIES ARE TO BE REPORTED IN WRITING TO THE LANDSCAPE ARCHITECT BEFORE CONSTRUCTION COMMENCES.

PROJECT: **TAUNTON VILLAGE DENTAL**
 510 TAUNTON RD. E. OSHAWA, ON.

DRAWING: **LANDSCAPE PLAN**

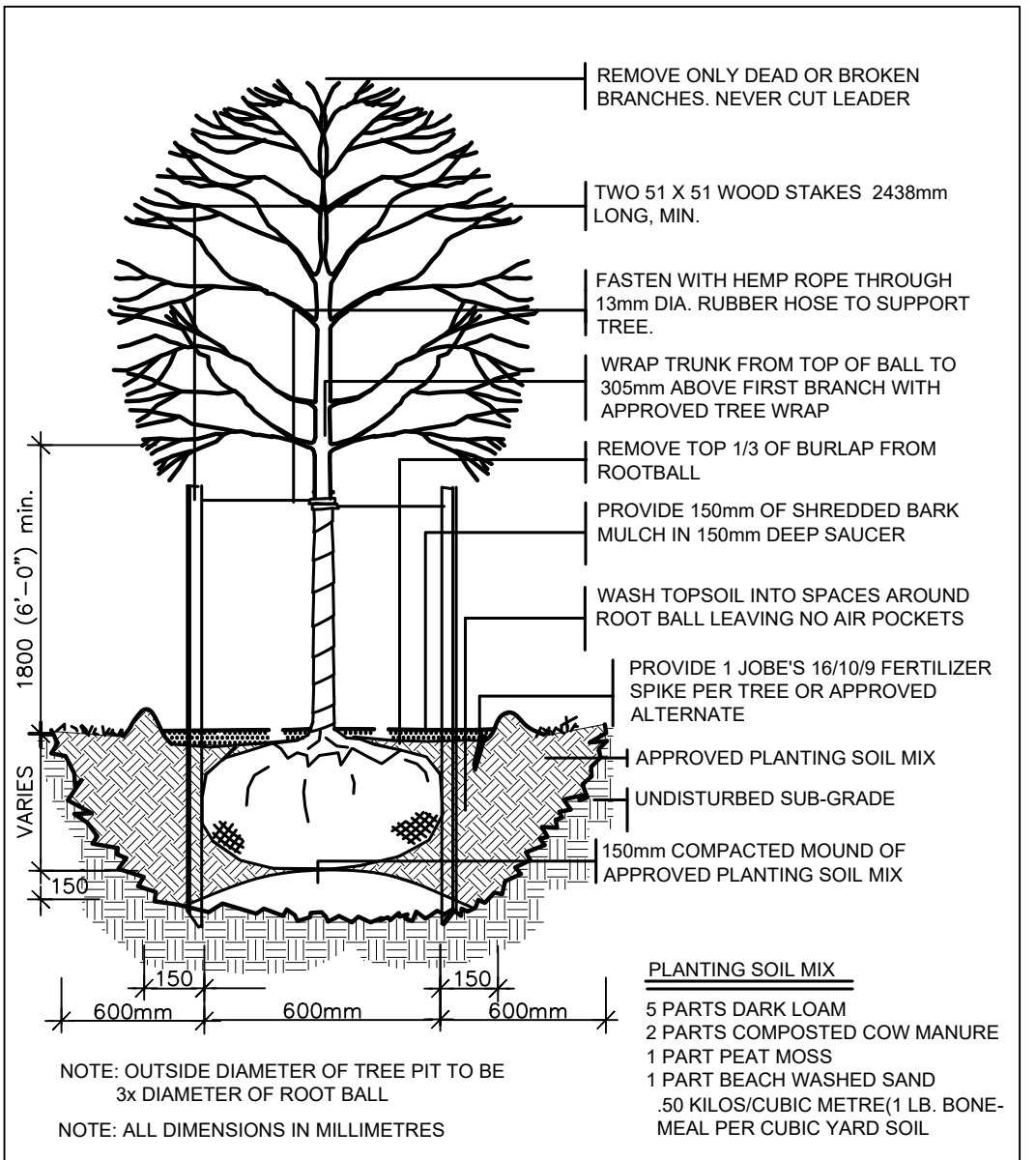
DRAWN BY: RP SCALE: 1:200
 CHECKED BY: HJK DATE: JUNE, 2016
 JOB NO.: 2016-063

L-L1
 DRAWING 1 of 3

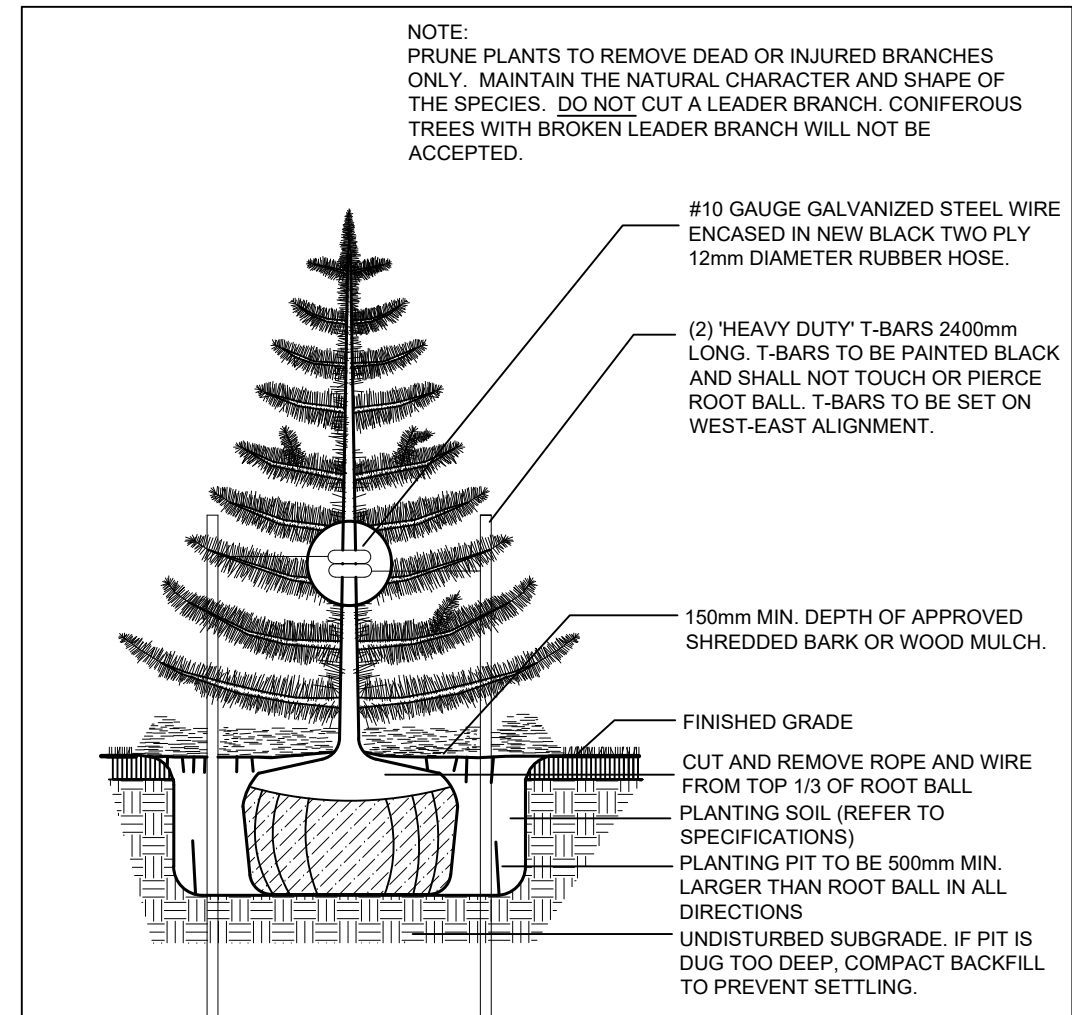
File #2016-063.DWG

- *NOTES:**
- PROVIDE 150mm WOOD CHIP MULCH FOR ALL EXISTING AND PROPOSED PLANTING BEDS
 - ALL PLANTING BEDS TO RECEIVE MIN. 450mm DEPTH GOOD QUALITY TOPSOIL.

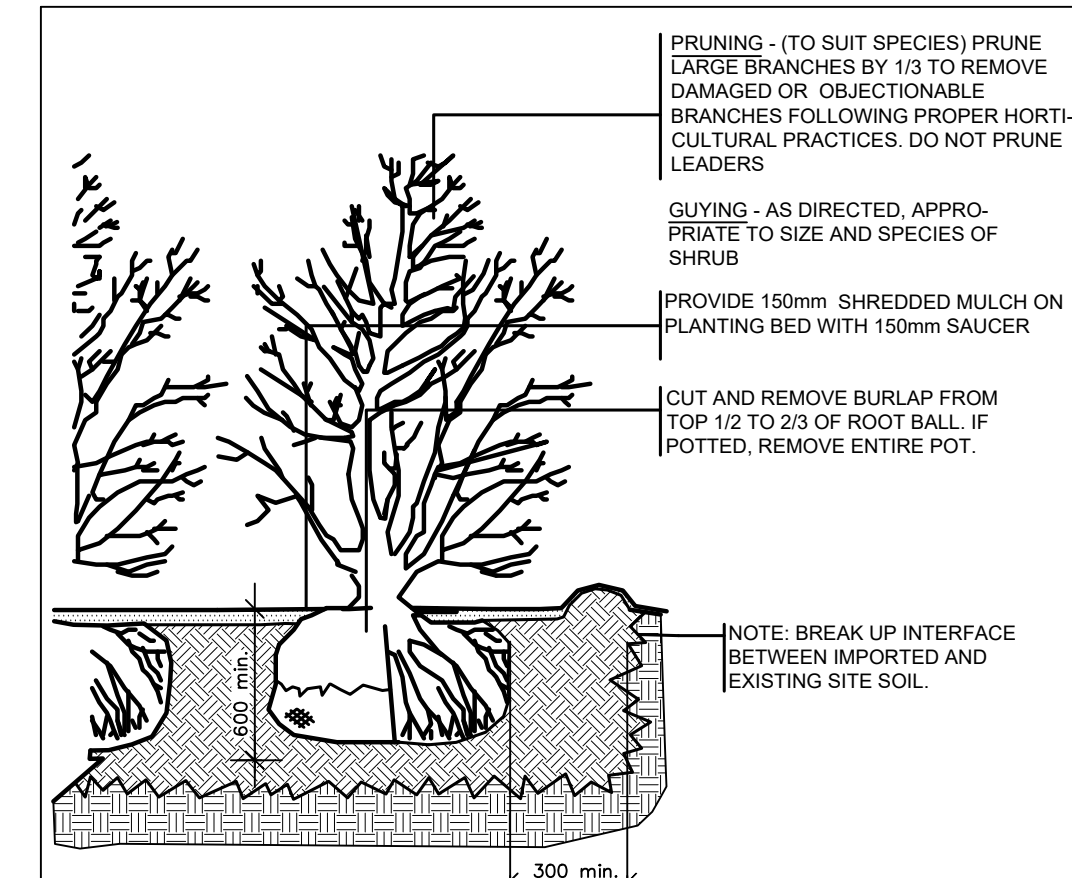




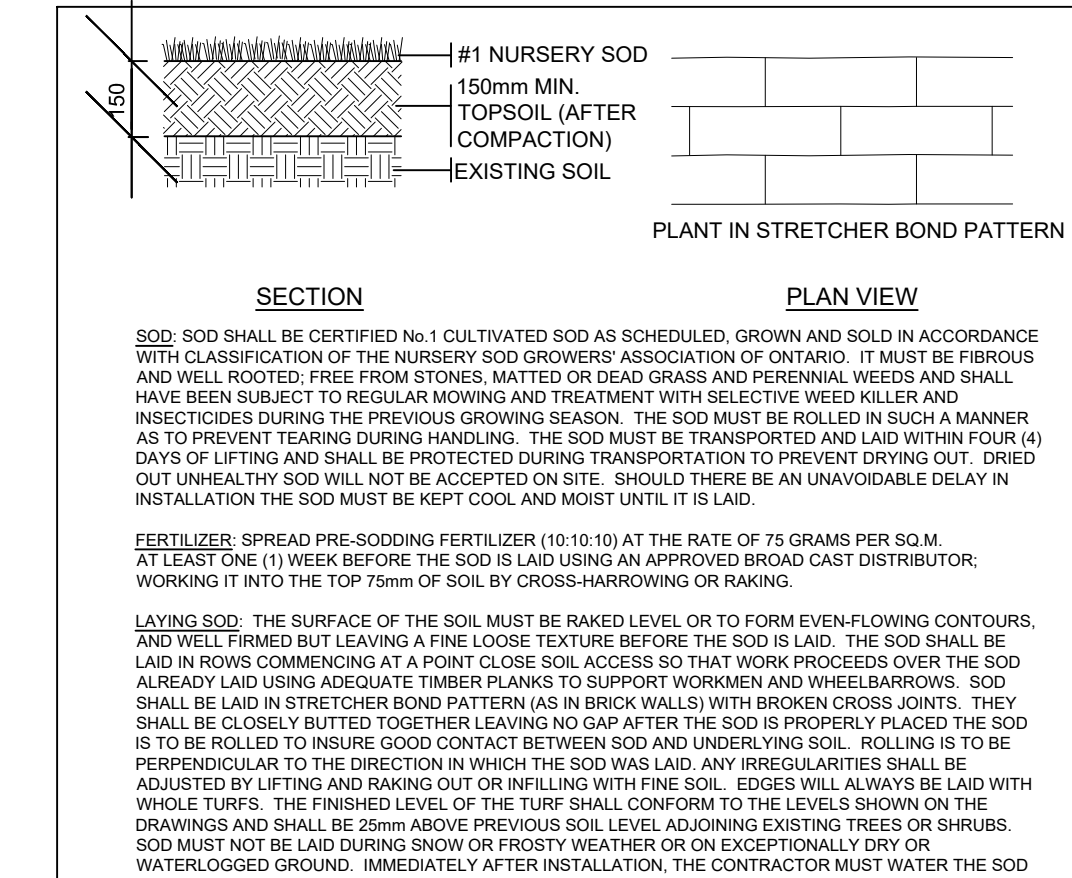
1 DECIDUOUS TREE PLANTING - WOOD STAKES & HEMP ROPE
N.T.S. CITY OF OSHAWA 329301.59-11



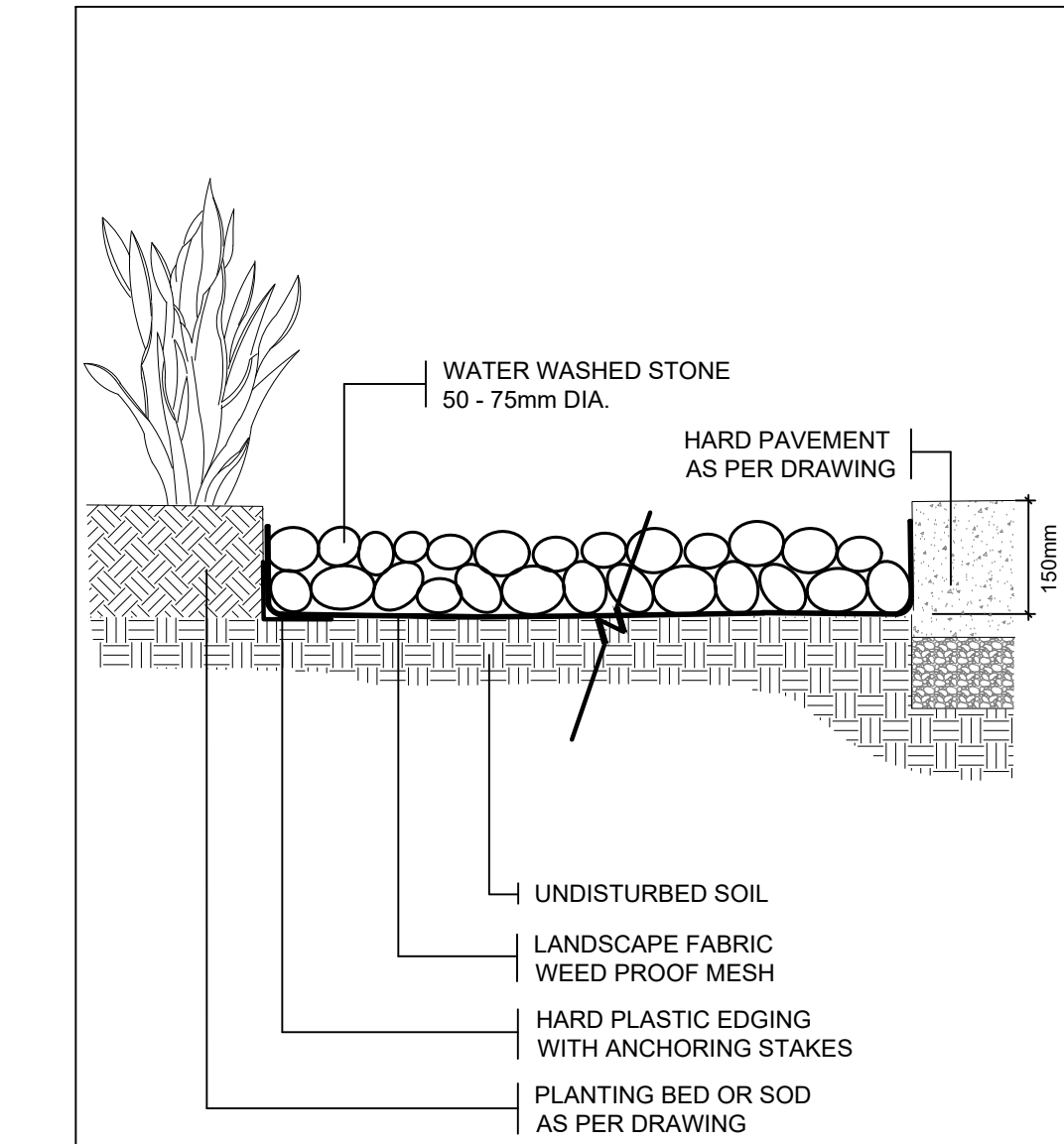
2 CONIFEROUS TREE PLANTING
CITY OF OSHAWA - PARKS CONSTRUCTION DETAIL N.T.S. 329301.59-02



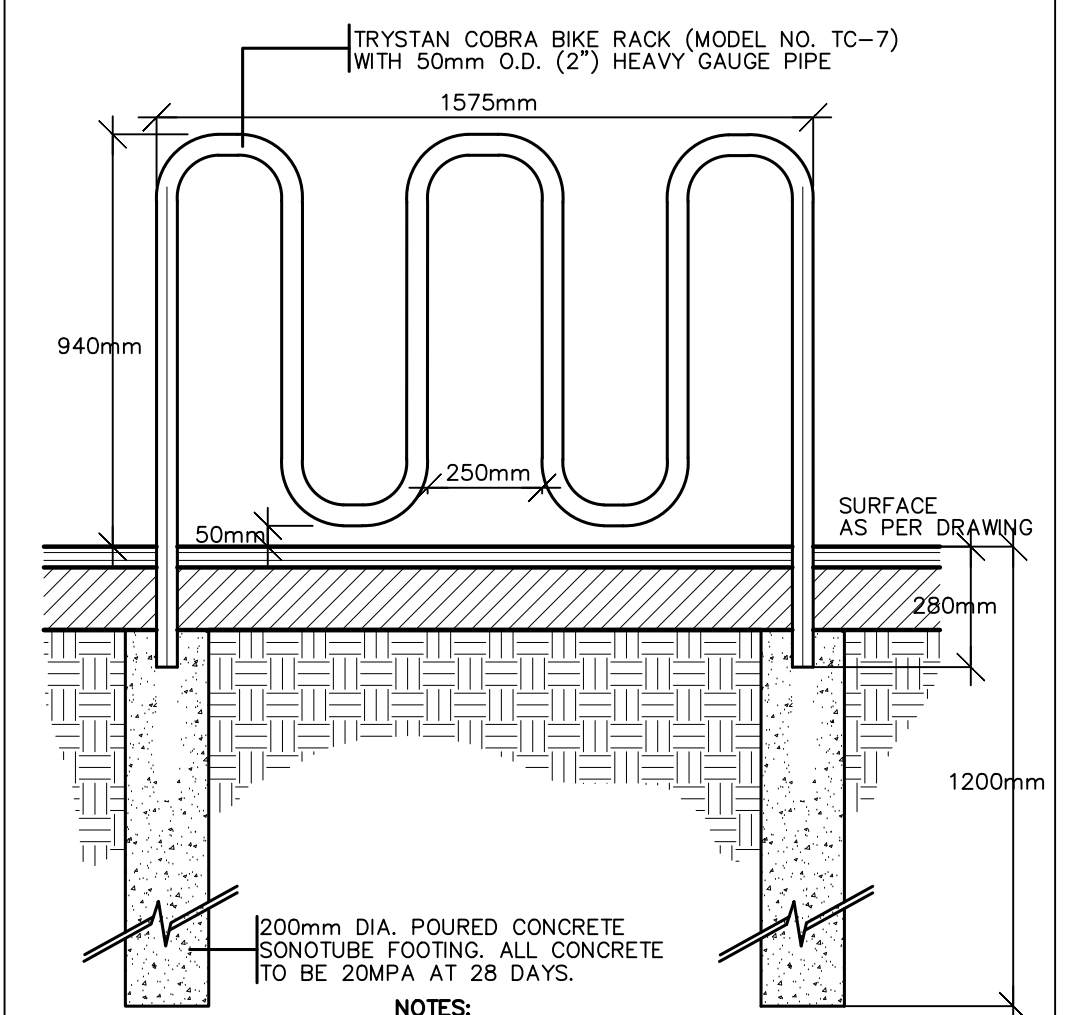
3 SHRUB PLANTING
N.T.S. CITY OF OSHAWA 329301.59-12



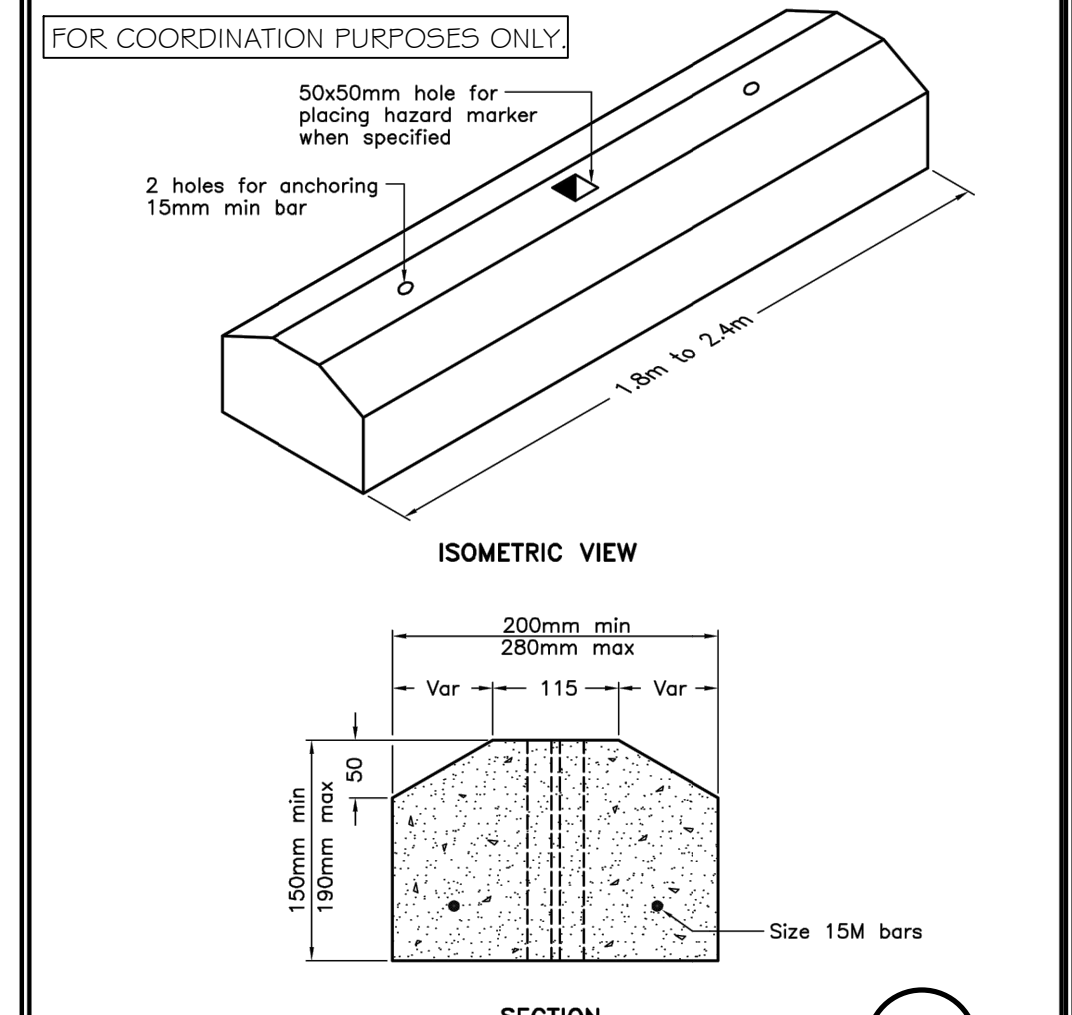
4 SOD OVER 150MM TOPSOIL
N.T.S. 329223-01



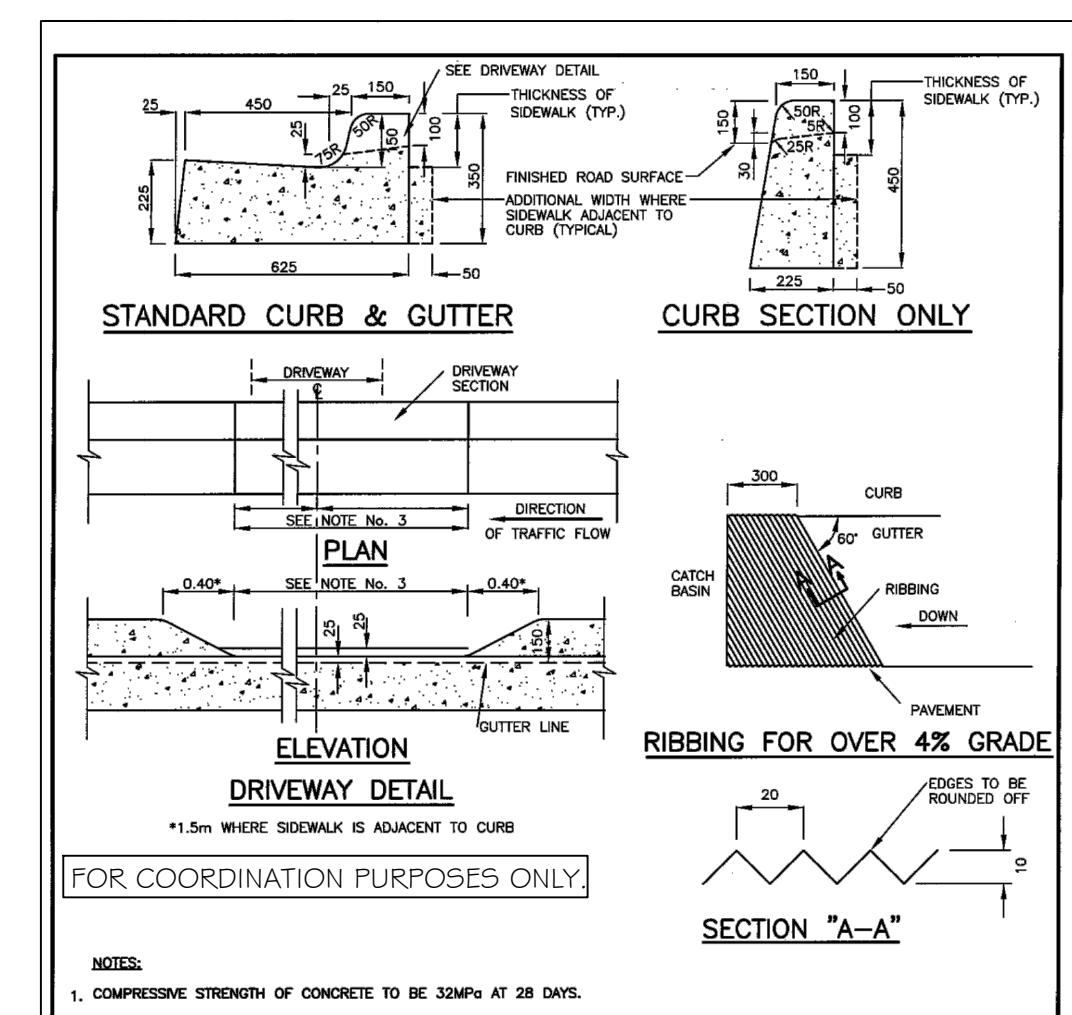
5 WATER WASHED STONE
N.T.S. 321548-02



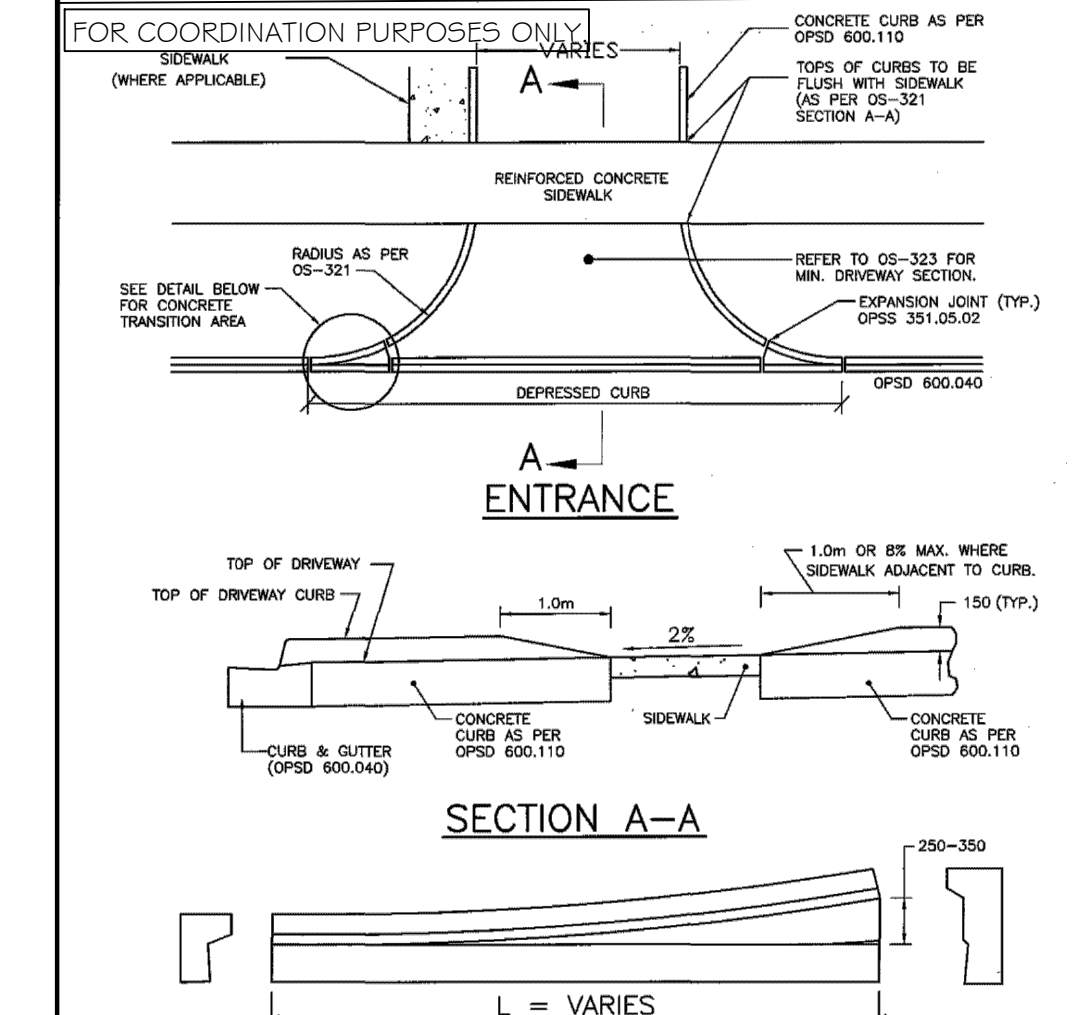
6 TRYSTAN BIKE RACK TC - 7
N.T.S. 129313.10-01



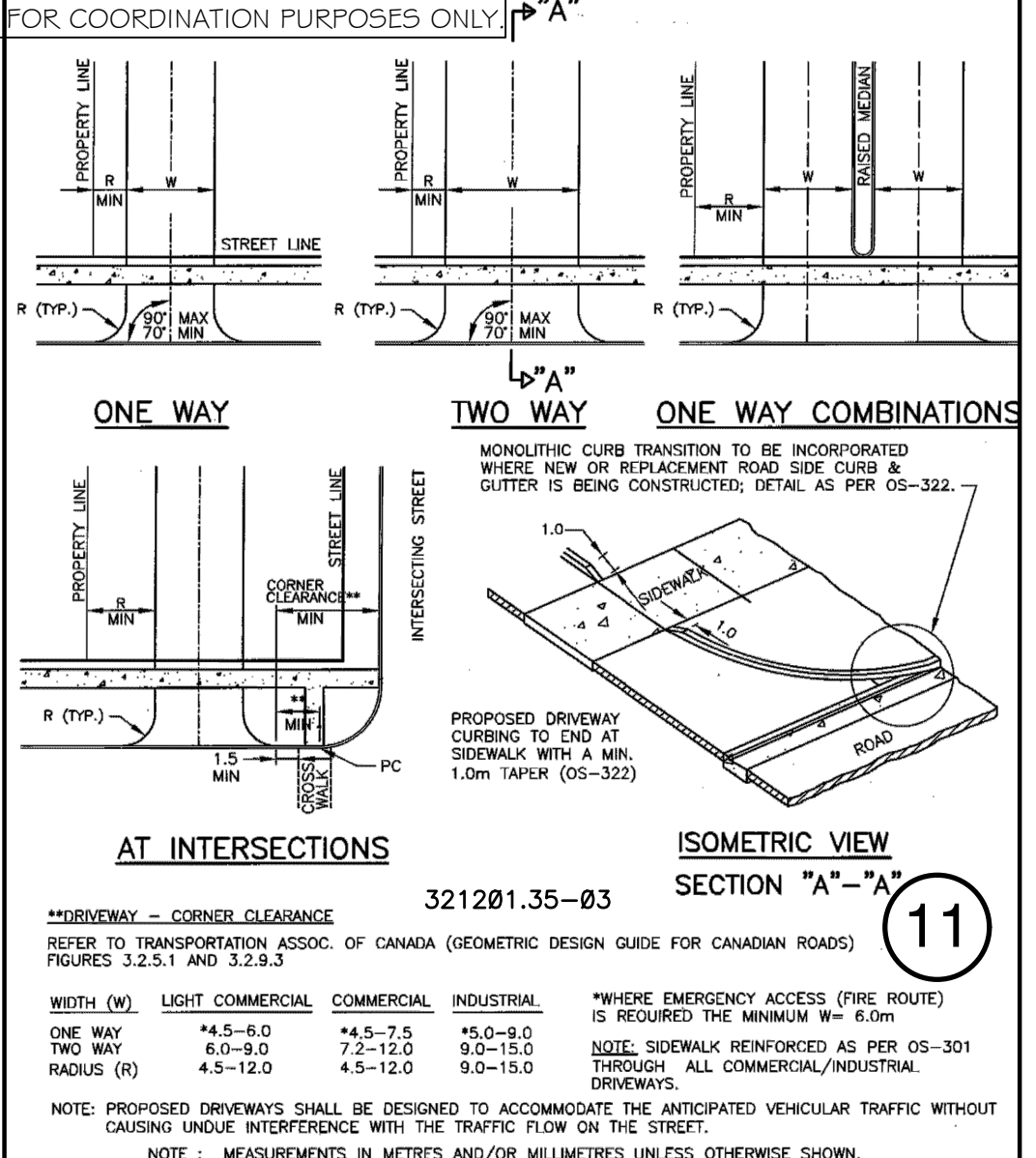
7 PRECAST CONCRETE CURB
ONTARIO PROVINCIAL STANDARD DRAWING Nov 2012 Rev 2
321713-01 N.T.S. OPSD 603.020



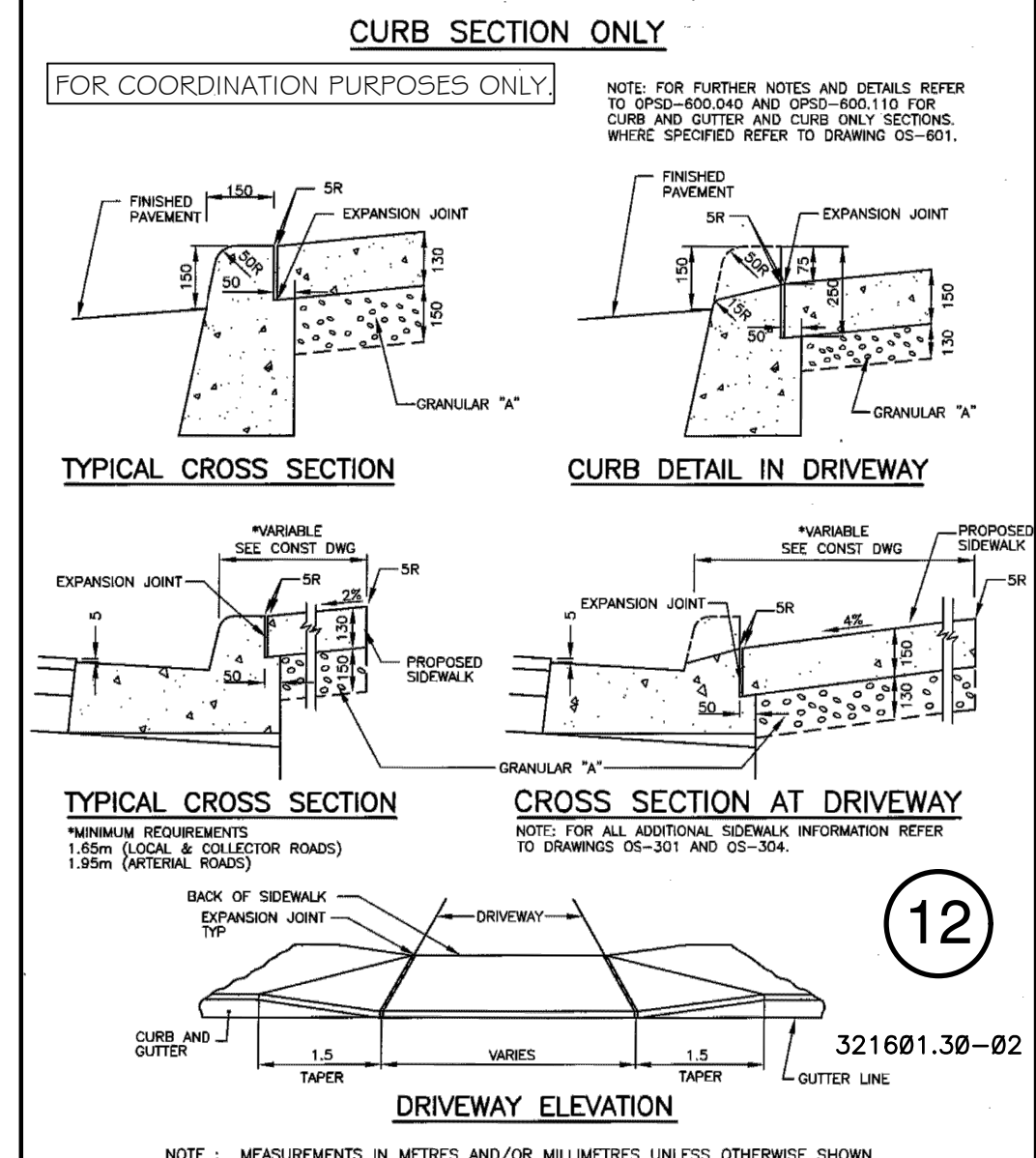
8 CONCRETE CURB AND GUTTER AND CURB SECTION ONLY
CITY OF OSHAWA DEVELOPMENT SERVICES DEPARTMENT
321601.30-01



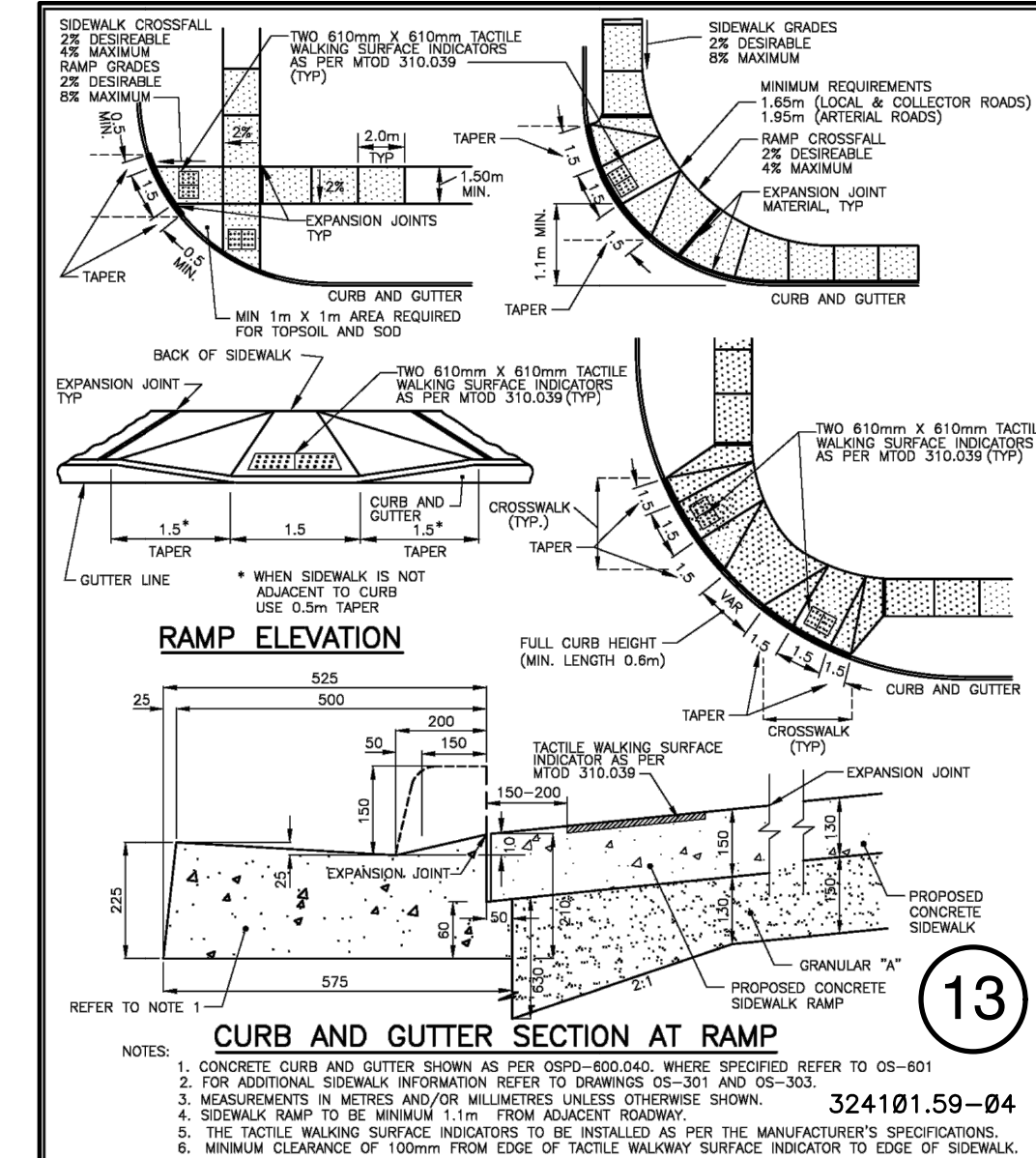
9 HIGH DENSITY RESIDENTIAL, COMMERCIAL & INDUSTRIAL ENTRANCE CURB RETURN
CITY OF OSHAWA DEVELOPMENT SERVICES DEPARTMENT
321201.35-01 N.T.S. OS-322



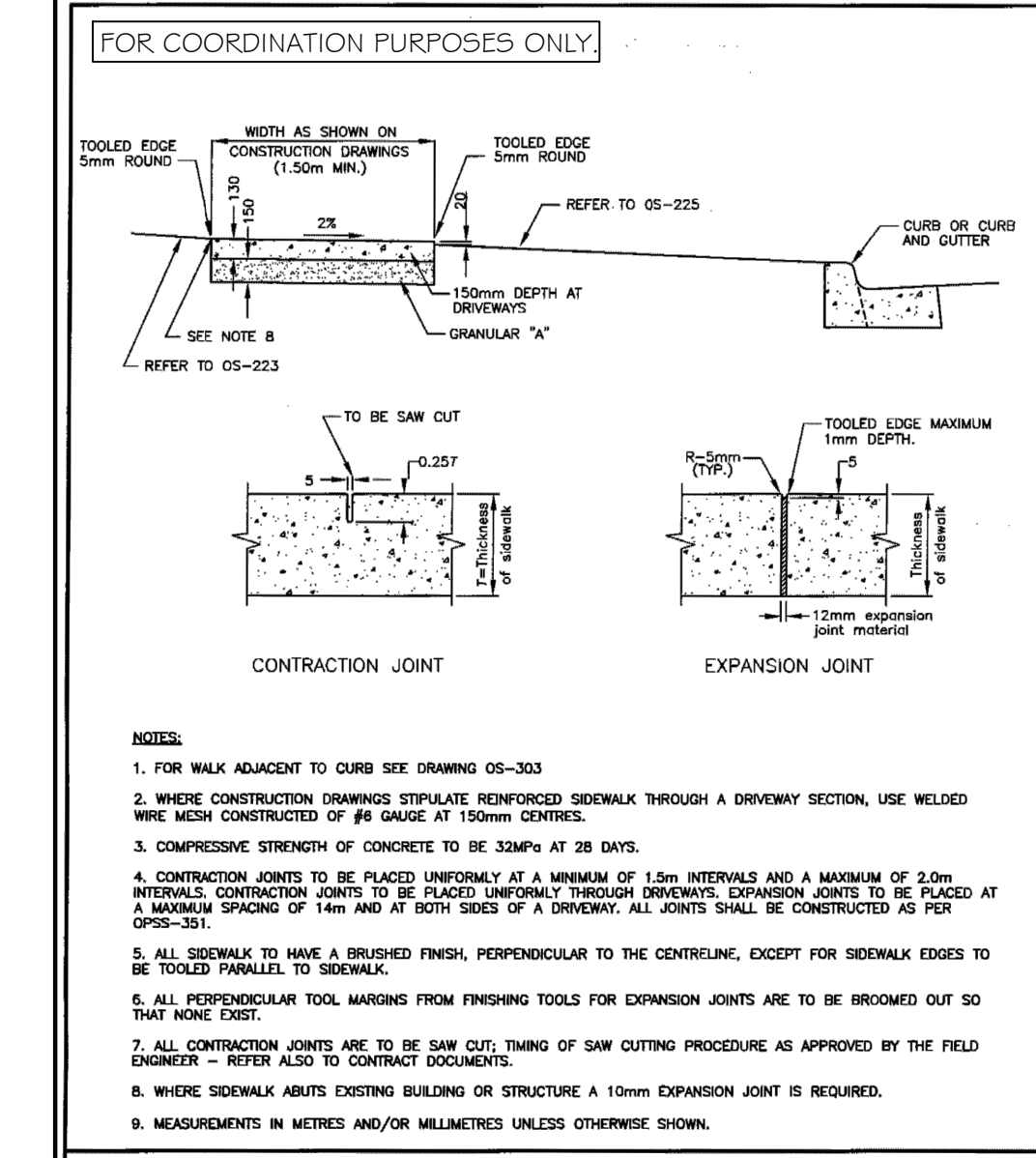
11 AT INTERSECTIONS
CITY OF OSHAWA DEVELOPMENT SERVICES DEPARTMENT
321201.35-03 N.T.S. OS-321



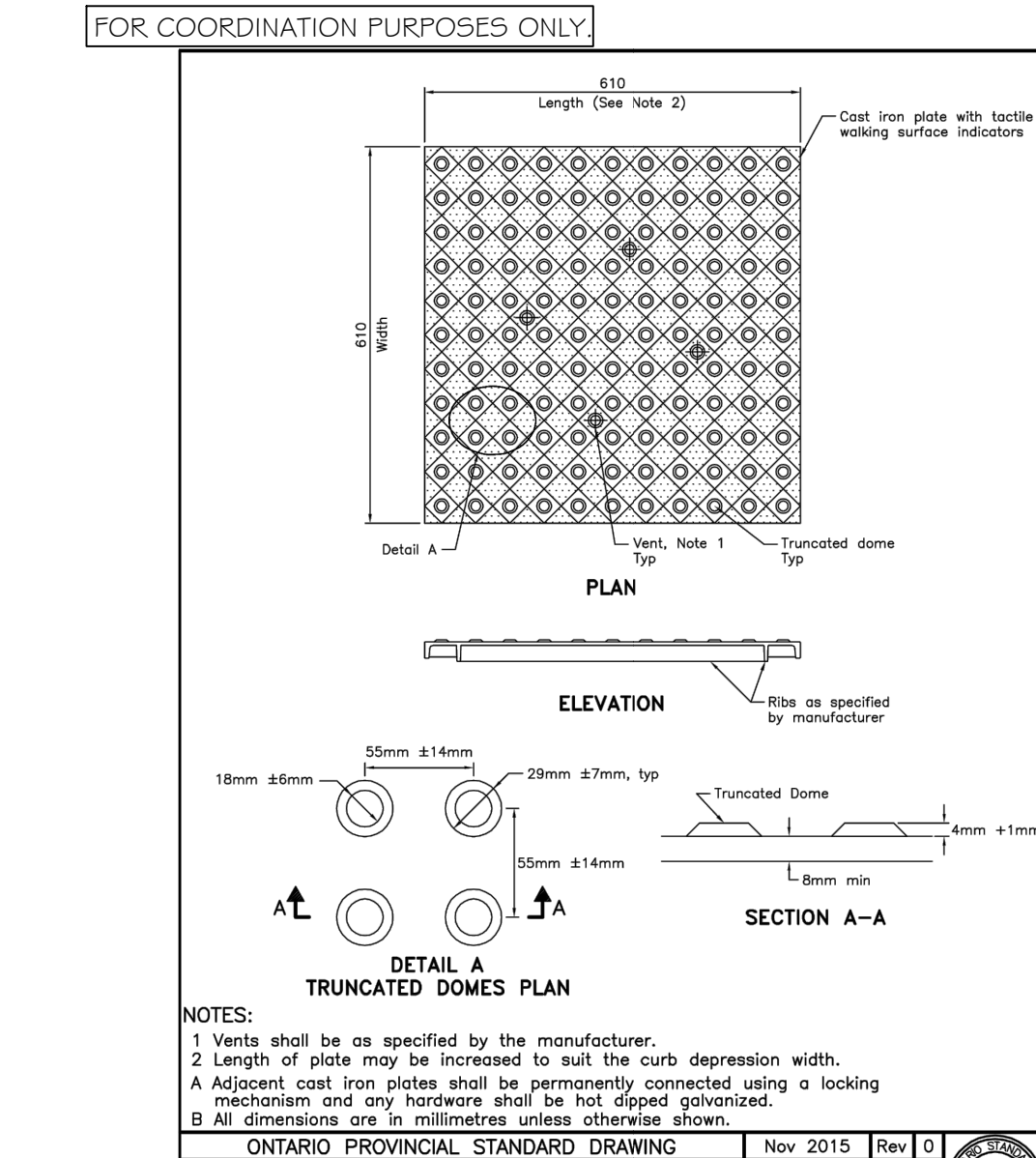
12 CONCRETE SIDEWALK ADJACENT TO CURB AND GUTTER
CITY OF OSHAWA DEVELOPMENT SERVICES DEPARTMENT
321601.30-02 N.T.S. OS-303



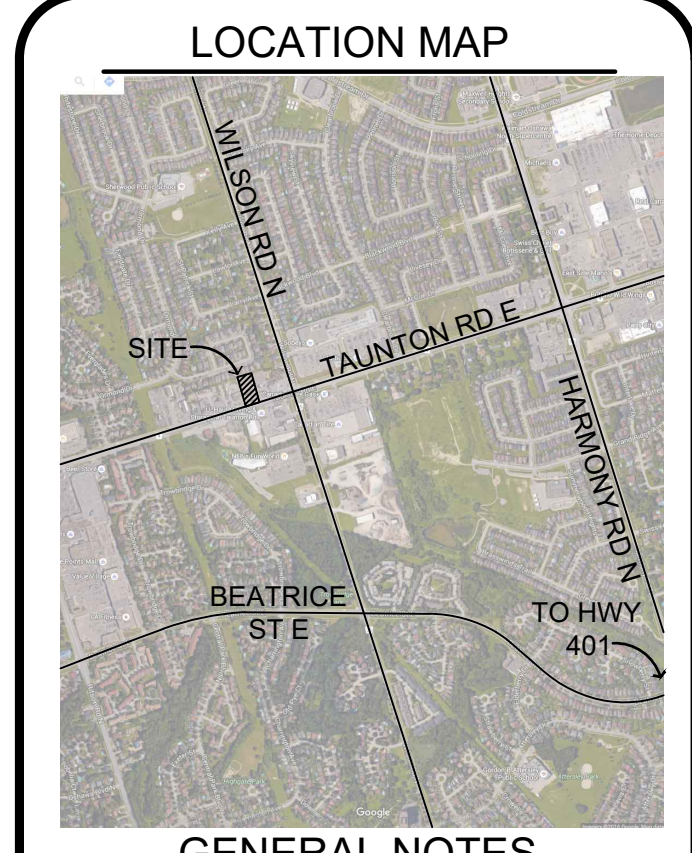
13 CONCRETE SIDEWALK RAMPS
CITY OF OSHAWA DEVELOPMENT SERVICES DEPARTMENT
324101.59-04 N.T.S. OS-304



14 SIDEWALK SECTION
CITY OF OSHAWA DEVELOPMENT SERVICES DEPARTMENT
321303.65-01 N.T.S. OS-301



15 CONCRETE SIDEWALK RAMPS TACTILE WALKING SURFACE INDICATORS COMPONENT
CITY OF OSHAWA DEVELOPMENT SERVICES DEPARTMENT
321303.71-08 N.T.S. OPSD 310.039



REVISIONS

NO.	DATE	NOTES	BY
7	2020/07/20	REVISED AS PER COMMENTS	KMR
6	2020/05/19	REVISED AS PER UPDATED SITE PLAN	LZH
5	2018/06/25	Tender	AW
4	2018/11/01	3rd SUBMISSION	RP
3	2018/08/16	2nd SUBMISSION	ST
2	2018/06/22	1st SUBMISSION	TJM
1	2018/06/15	LANDSCAPE PLAN	TJM

THESE LANDSCAPE DRAWINGS SHALL ONLY BE USED FOR THE PURPOSES INDICATED BELOW AS NOTED AND WHEN SIGNED BY THE CONSULTING LANDSCAPE ARCHITECT.

<input type="checkbox"/>	CONCEPTUAL	<input type="checkbox"/>	TENDER
<input type="checkbox"/>	PRELIMINARY	<input type="checkbox"/>	CONTRACT
<input type="checkbox"/>	SITE PLAN	<input type="checkbox"/>	CONSTRUCTION
<input type="checkbox"/>	PERMIT	<input type="checkbox"/>	AS-BUILT

RESIDENTIAL DRIVEWAYS - MINIMUM REQUIREMENTS

DRIVEWAY MATERIAL	EXCAVATION (mm)	GRANULAR "A" (mm)	SURFACE MATERIAL (mm)
CRUSHED STONE	280	230	50 IN KIND
ASPHALT	280	230	50 ML3 OR ML3P AS DIRECTED BY CITY ENGINEER
PAVING STONE	280	195	25 BRICK SAND OR PAVING STONE
CONCRETE	280	130	150 33MPa CONCRETE

DRIVEWAY SECTION

CITY OF OSHAWA	DEVELOPMENT SERVICES DEPARTMENT	REVISION NO. 3	DATE: FEB. 7, 2018
DATE: JUN. 16, 2012	321201.35-02		
BY: M.V.			
BY: A.A.			
DATE: JUN. 16, 2012	N.T.S.		OS-323

HENRY KORTEKAAS & ASSOCIATES INC.
LANDSCAPE ARCHITECTS, ARBORISTS, ENVIRONMENTAL & RECREATION PLANNERS
589 LIVERPOOL ROAD TEL: 905-888-5599
PICKERING, ON L1W 1R1 EMAIL: INFO@HKA.CA

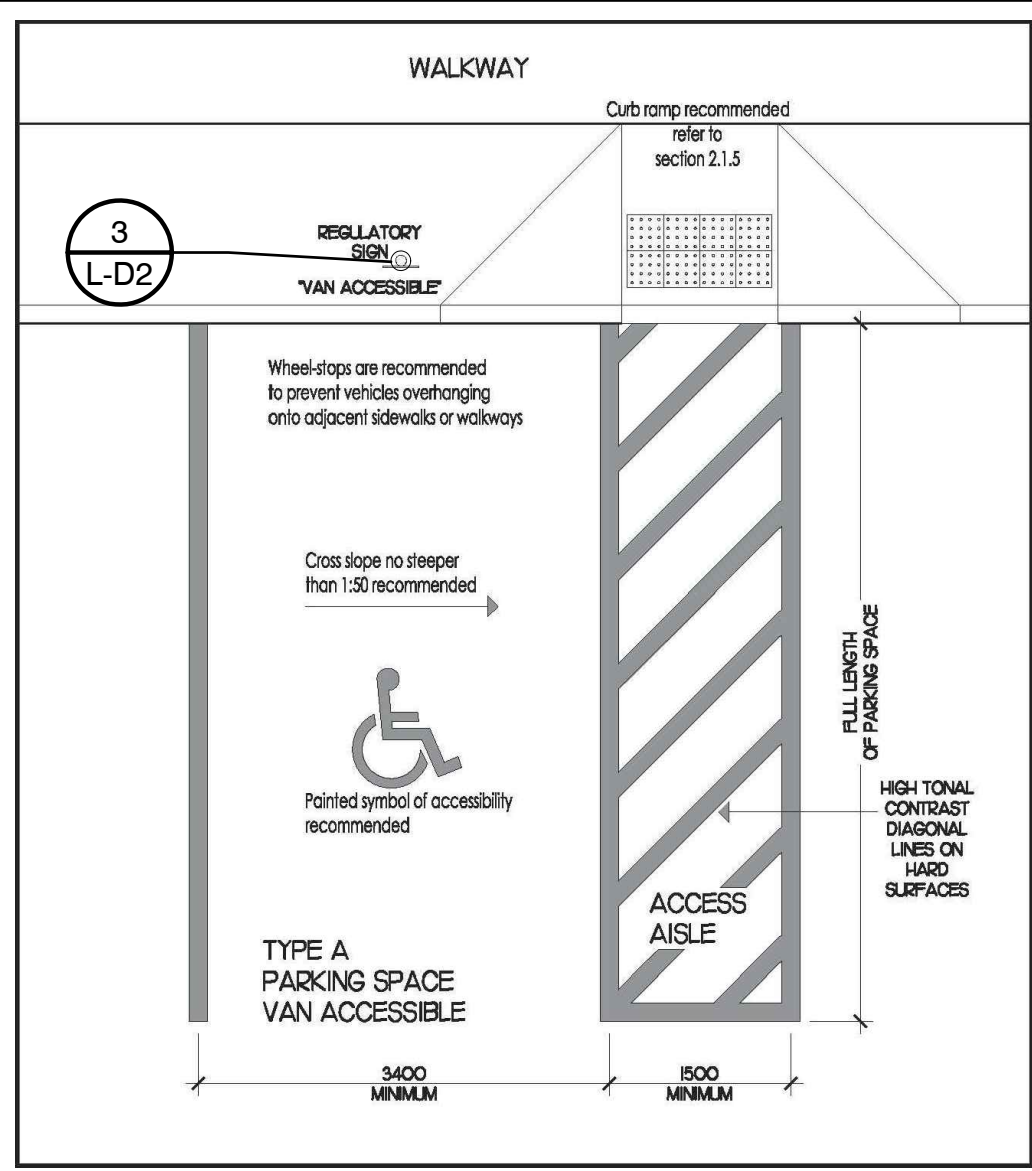
THESE DRAWINGS ARE INSTRUMENTS OF SERVICE AND THE LANDSCAPE ARCHITECT RETAINS OWNERSHIP OF THESE DRAWINGS. THEY ARE FOR SITE PLAN APPROVAL ONLY AND MAY REQUIRE FURTHER CONSTRUCTION DETAILING AND COORDINATION WITH OTHER ASSOCIATED PROFESSIONAL DESIGN SERVICES BEFORE ACTUAL TENDER AND CONSTRUCTION. DIMENSIONS ARE TO BE VERIFIED PRIOR TO CONSTRUCTION. DRAWINGS ARE NOT TO BE SCALED. IT IS ADVISED THAT CONTRACTORS CONTACT THE LANDSCAPE ARCHITECT PRIOR TO CONSTRUCTION TO ENSURE THE USE OF THE LATEST REVISED DRAWINGS. THE LANDSCAPE ARCHITECT IS NOT LIABLE FOR ERRORS OR OMISSIONS ARISING FROM UTILIZATION OF THESE PLANS BEFORE THE SAID DRAWINGS ARE SCALED, SIGNED AND DATED, AND THE LANDSCAPE ARCHITECT IS CONTRACTED TO PROVIDE CONSTRUCTION ADMINISTRATION AND CERTIFICATION SERVICES BY THE OWNER. ALL APPARENT DISCREPANCIES ARE TO BE REPORTED IN WRITING TO THE LANDSCAPE ARCHITECT BEFORE CONSTRUCTION COMMENCES.

PROJECT: TAUNTON VILLAGE DENTAL
510 TAUNTON RD. E. OSHAWA, ON.

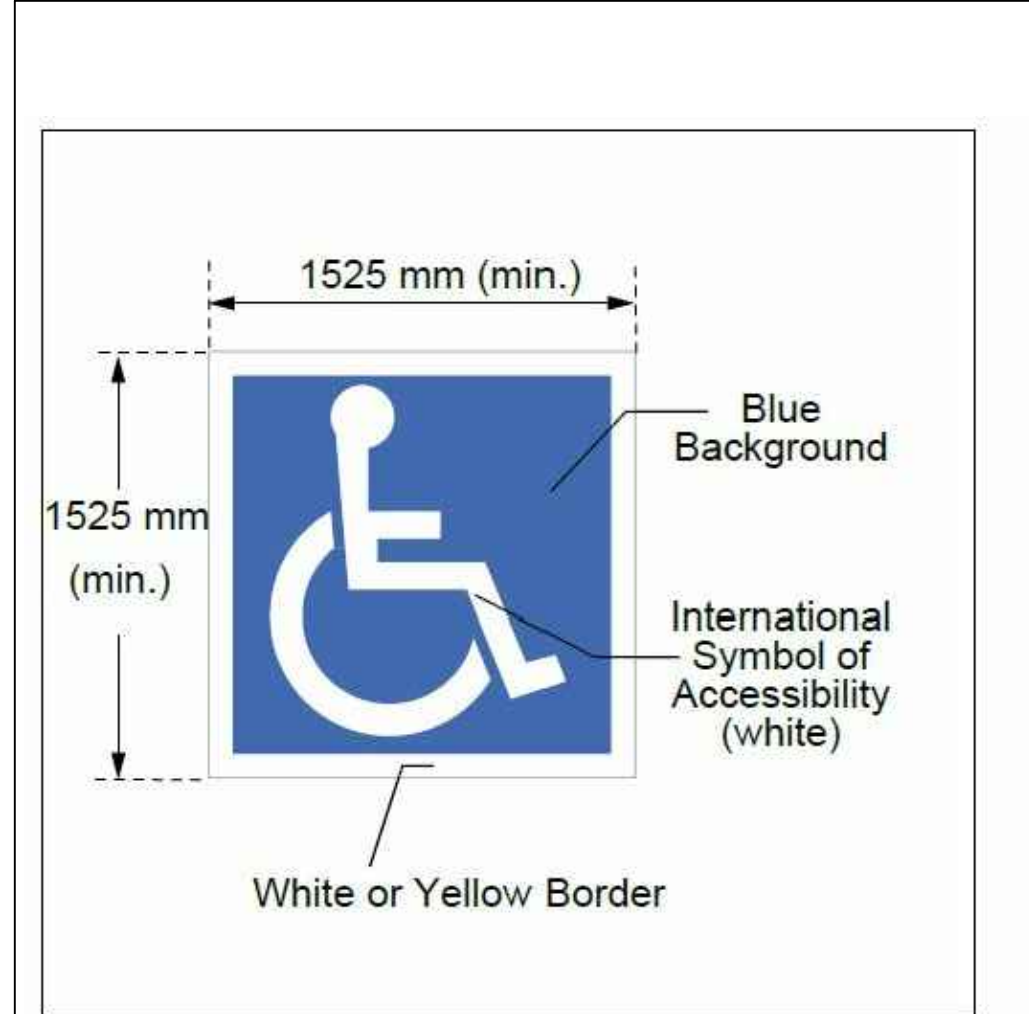
DRAWING: DETAILS

DRAWN BY: RP SCALE: AS NOTED
CHECKED BY: HJK DATE: JUNE, 2016
JOB NO.: 2016-063
DRAWING: L-D1
2 of 3

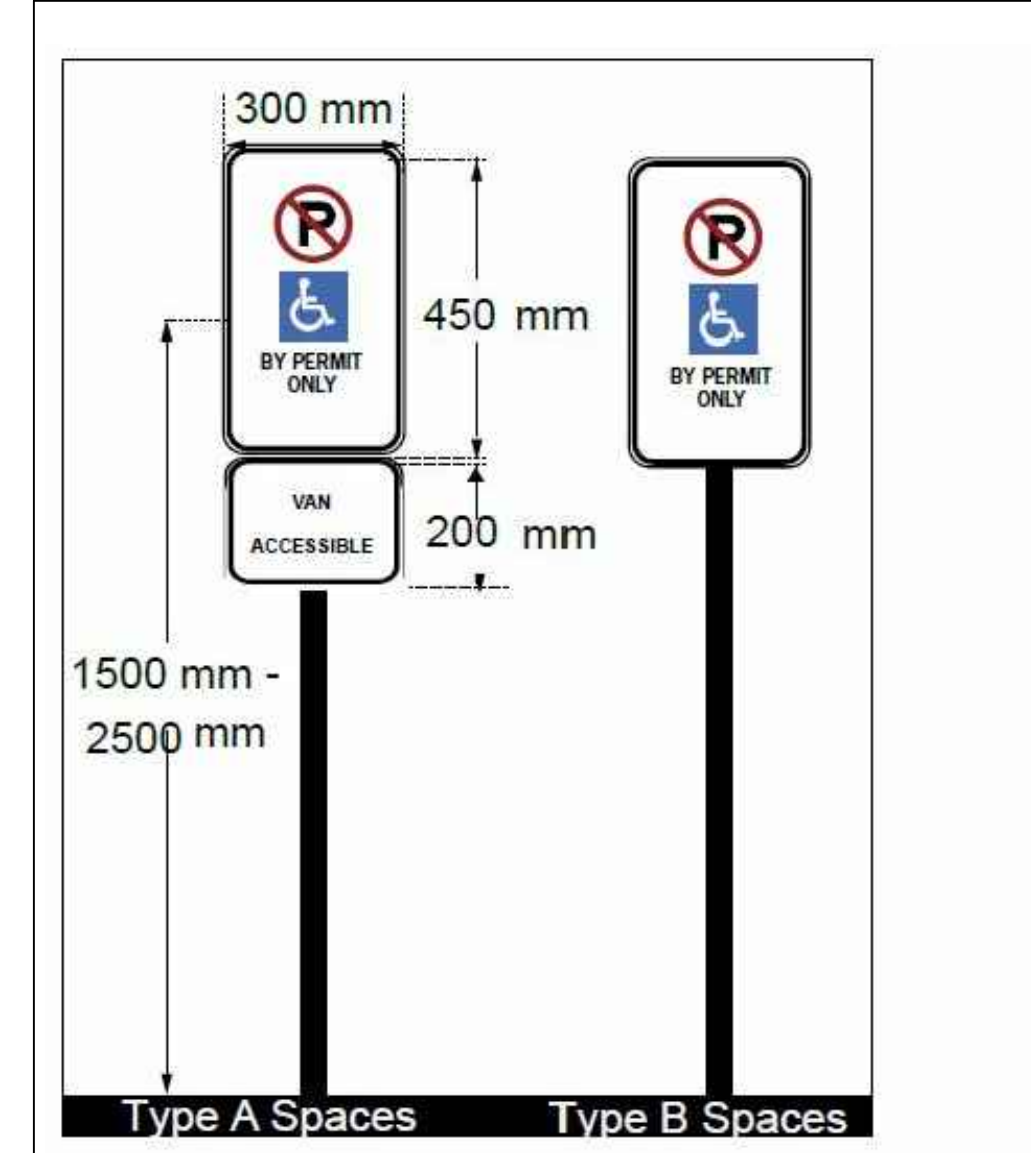
File #2016-063.DWG



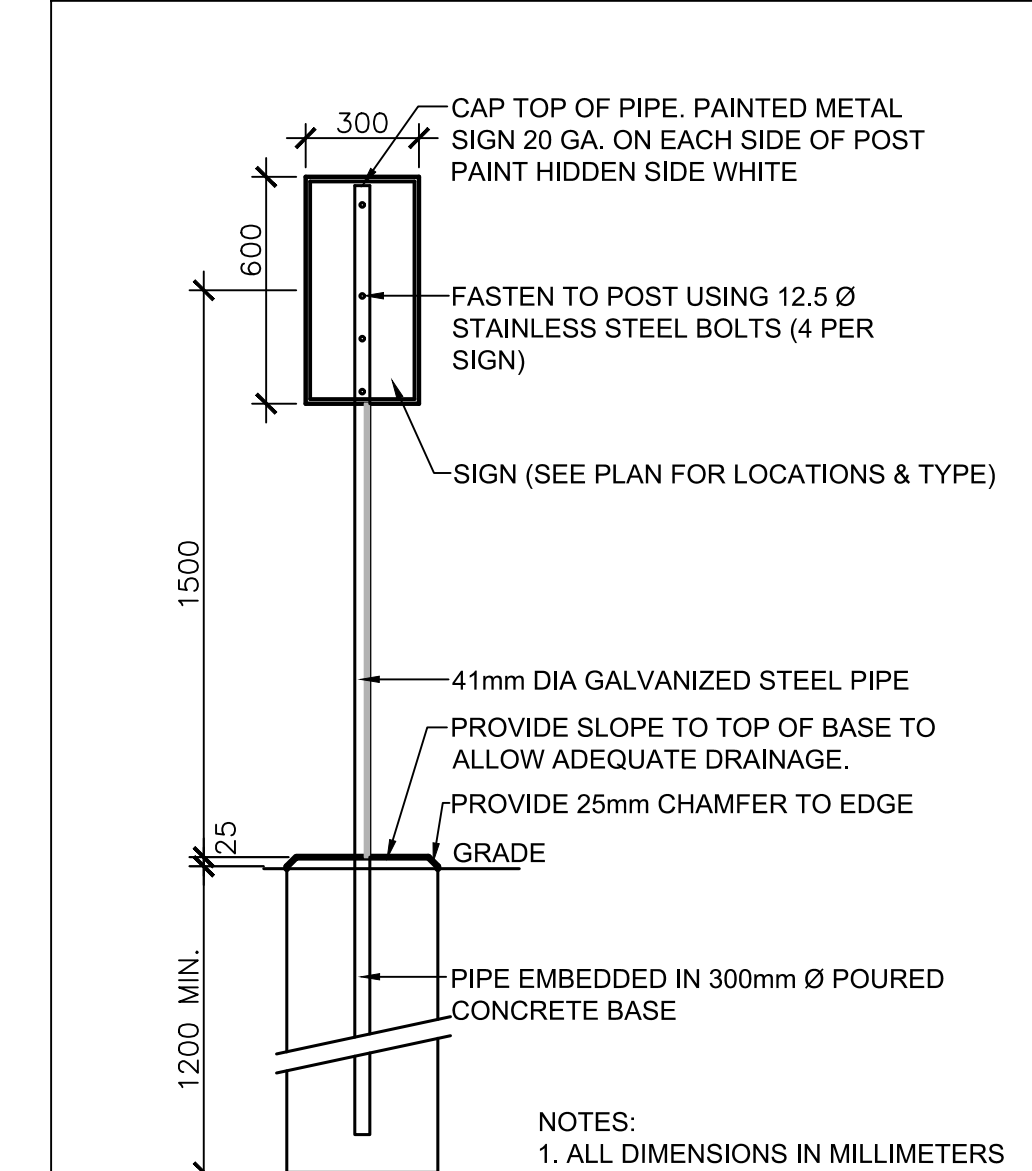
1 ACCESSIBLE PARKING STALL
N.T.S. TYPE A - VAN ACCESSIBLE 324102-01



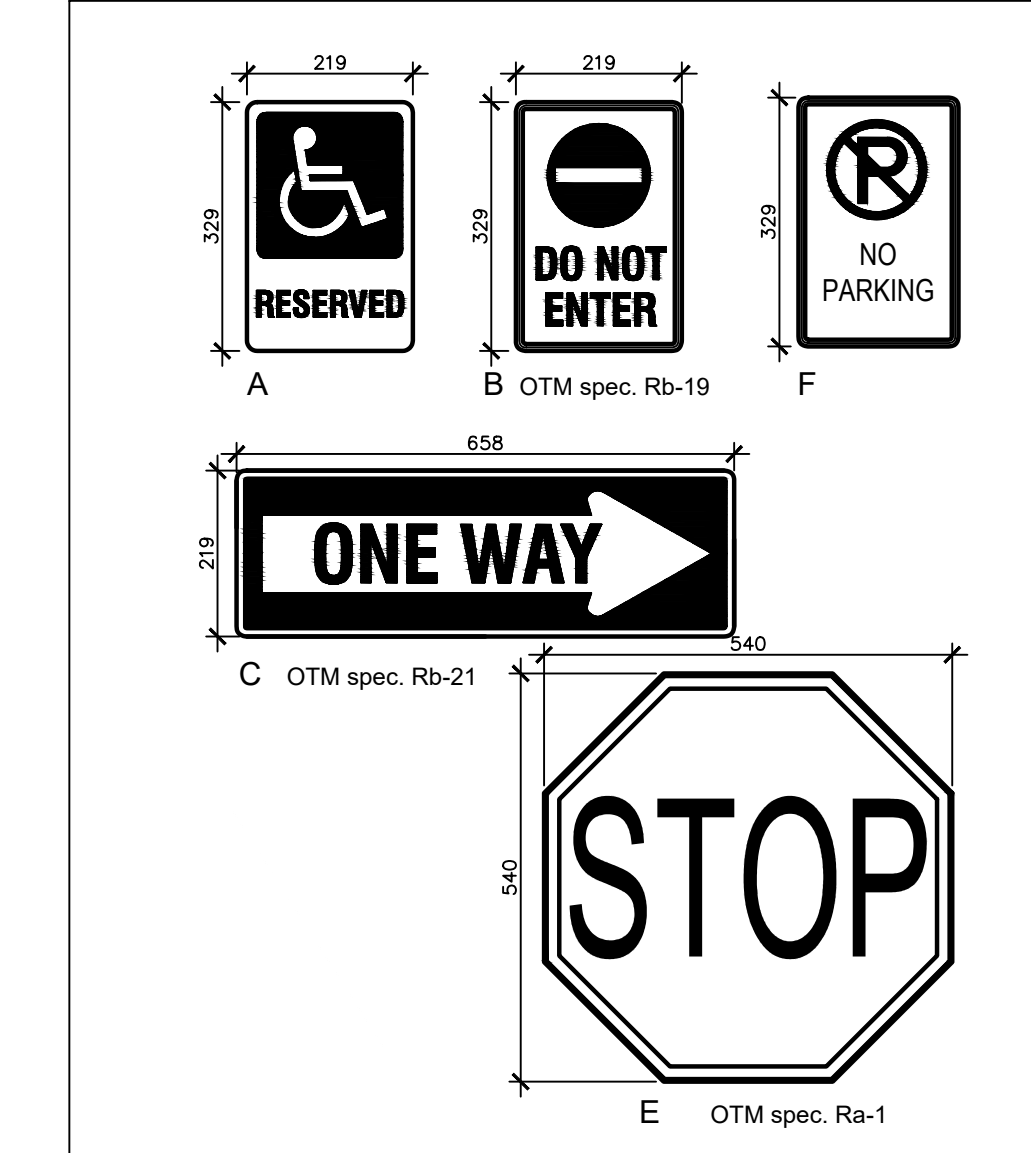
2 ACCESSIBLE PARKING PAVEMENT MARKING
N.T.S. 324101.59-11



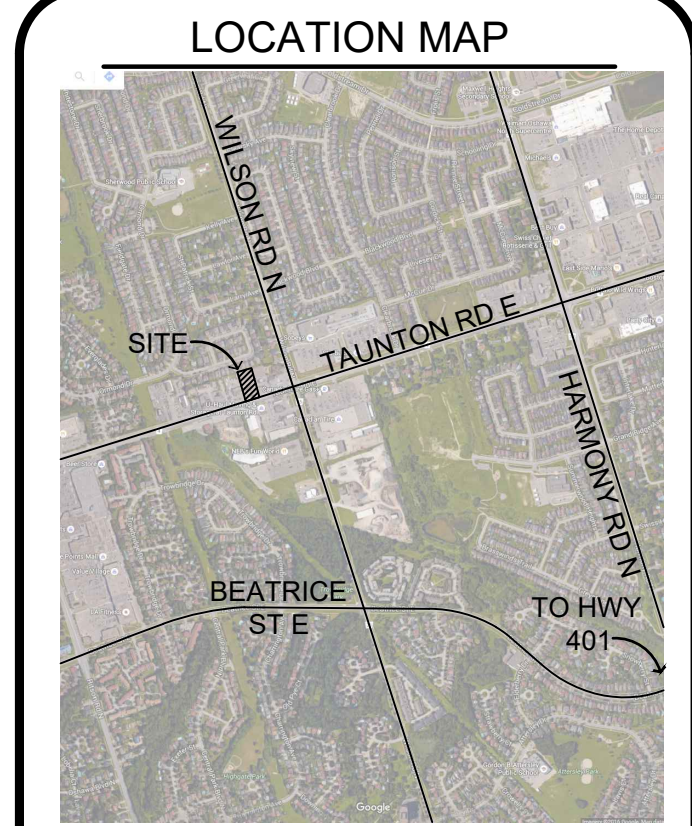
3 ACCESSIBLE PARKING VERTICAL SIGNAGE
N.T.S. 324101.59-12



4 TYPICAL SIGNAGE INSTALLATION
N.T.S. 324123.03-41



5 SITE SIGNAGE
N.T.S. 324123.03-39



GENERAL NOTES
THE LOCATION OF PROPERTY LINES, ELEVATIONS AND FACILITIES ON THIS PLAN WERE DRAWN ON THE BASIS OF A DIGITAL SITE PLAN OR SURVEY DATA PROVIDED BY OTHER CONSULTANTS.
IT IS THE RESPONSIBILITY OF THE CLIENT AND HIS CONTRACTORS TO CONFIRM THE ACCURACY OF THE SETBACKS, LOCATIONS AND GRADES ETC. ANY VARIATIONS BETWEEN EXISTING CONDITIONS AND THIS PLAN SHOULD BE ADJUSTED ON SITE AND REPORTED TO THE CONSULTING LANDSCAPE ARCHITECT TO DETERMINE THE IMPACT OF THE VARIATIONS ON THE SUITABILITY OF THE PROPOSED DEVELOPMENT.
CONSTRUCTION MUST CONFORM TO ALL CODES AND REQUIREMENTS OF AUTHORITIES HAVING JURISDICTION.

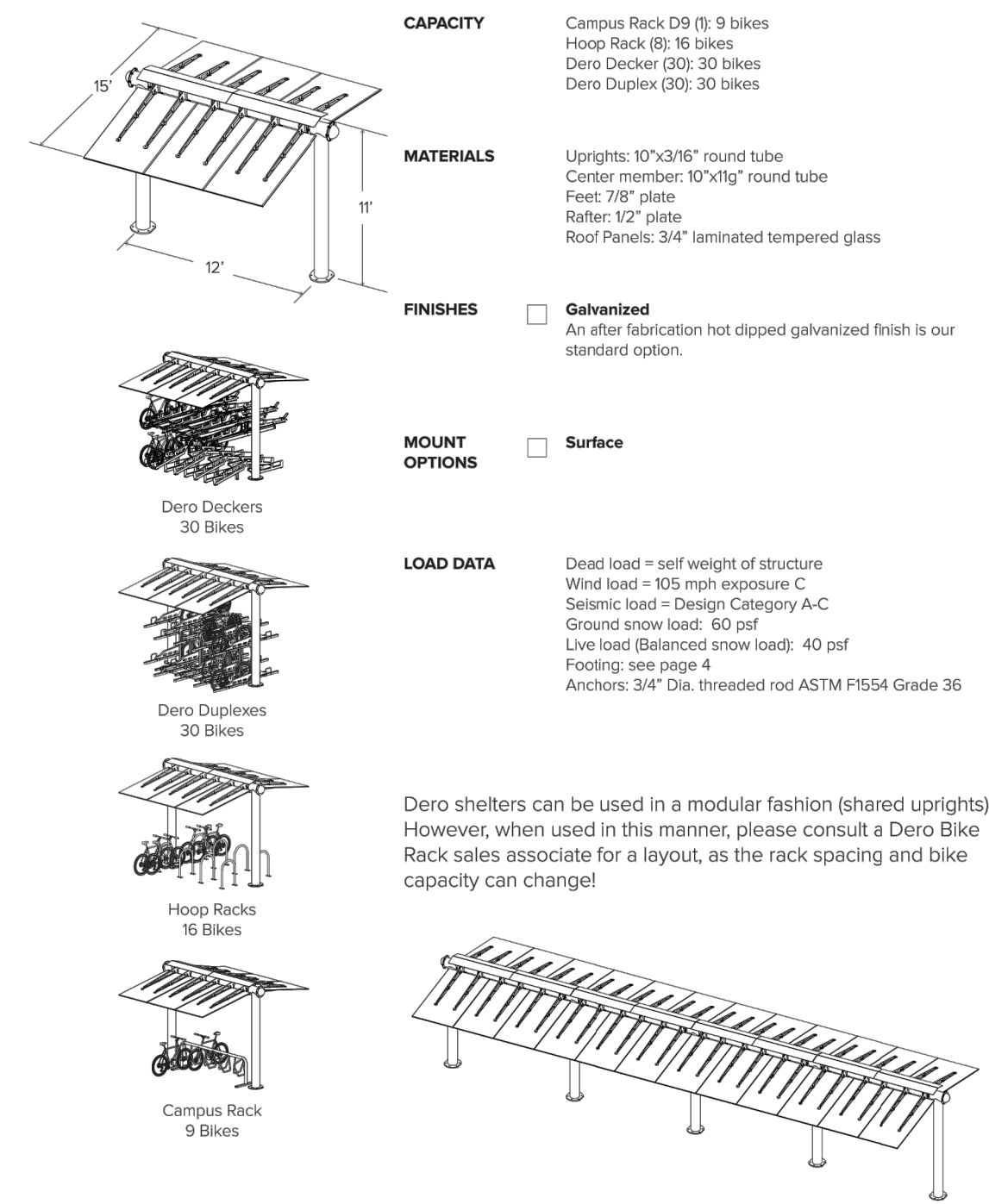
REVISIONS

NO.	DATE	NOTES	BY
7	2020/07/20	REVISED AS PER COMMENTS	KMR
6	2020/05/19	REVISED AS PER UPDATED SITE PLAN	LZH
5	2018/06/25	Tender	AW
4	2018/11/01	3rd SUBMISSION	RP
3	2018/08/16	2nd SUBMISSION	ST
2	2018/06/22	1st SUBMISSION	TJM
1	2018/06/15	LANDSCAPE PLAN	TJM

THESE LANDSCAPE DRAWINGS SHALL ONLY BE USED FOR THE PURPOSES INDICATED BELOW AS NOTED AND WHEN SIGNED BY THE CONSULTING LANDSCAPE ARCHITECT.

<input type="checkbox"/> CONCEPTUAL	<input type="checkbox"/> TENDER
<input type="checkbox"/> PRELIMINARY	<input type="checkbox"/> CONTRACT
<input type="checkbox"/> SITE PLAN	<input type="checkbox"/> CONSTRUCTION
<input type="checkbox"/> PERMIT	<input type="checkbox"/> AS-BUILT

STRATUS SHELTER™
Submittal Sheet

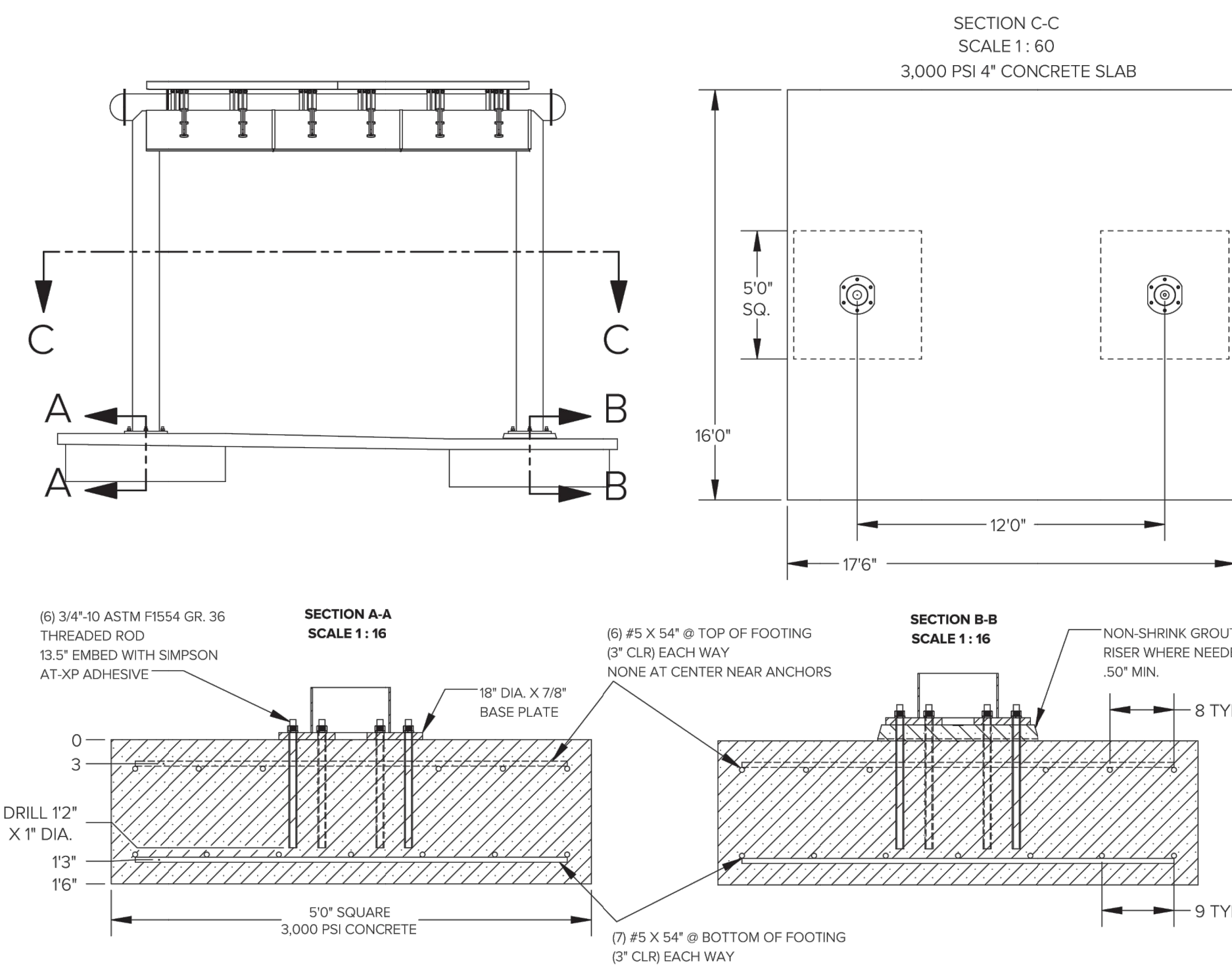


DERO PLAYCORE
www.dero.com | 1-888-337-6729
© 2016 Dero

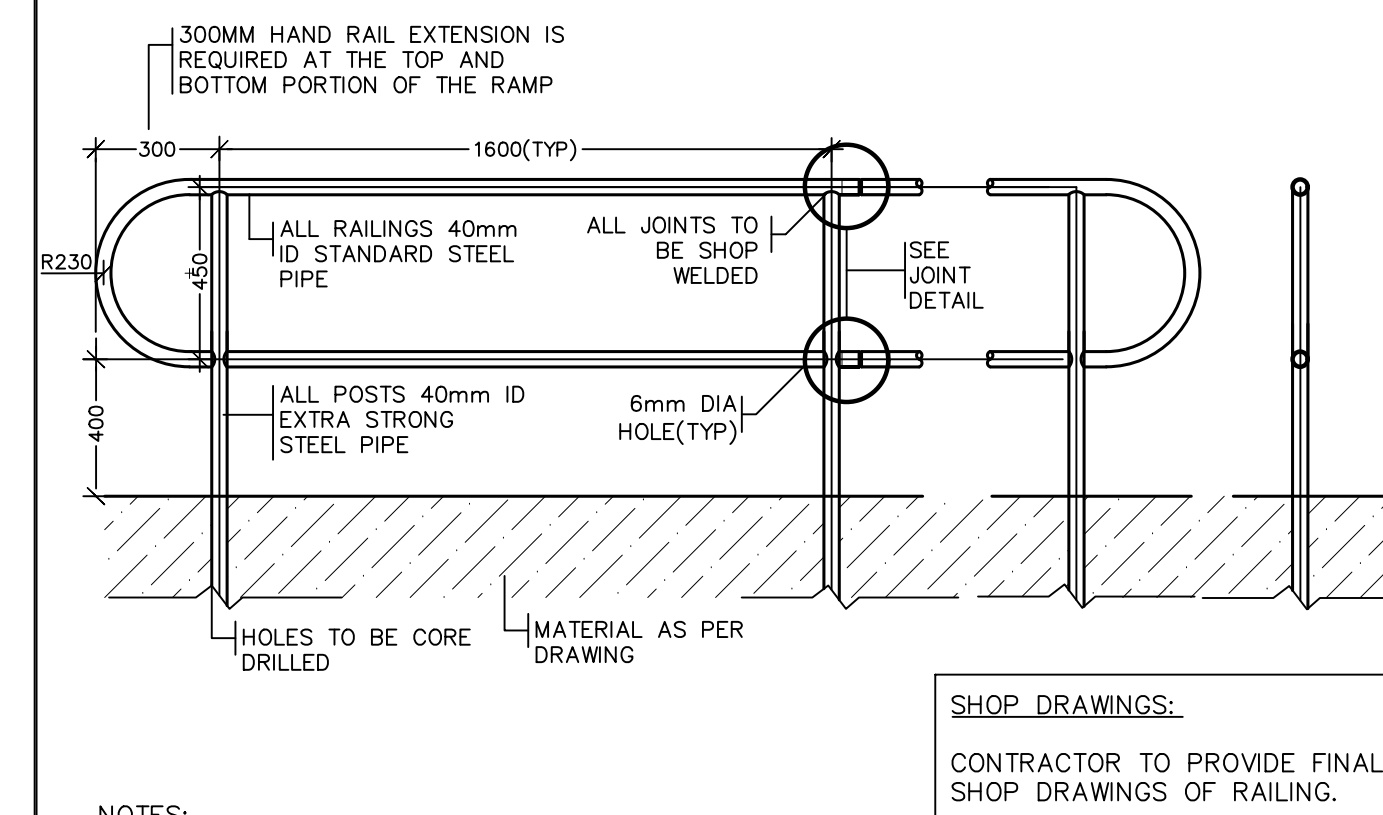
6 STRATUS SHELTER
N.T.S. 129313.07-04



www.dero.com | 1-888-337-6729
© 2016 Dero

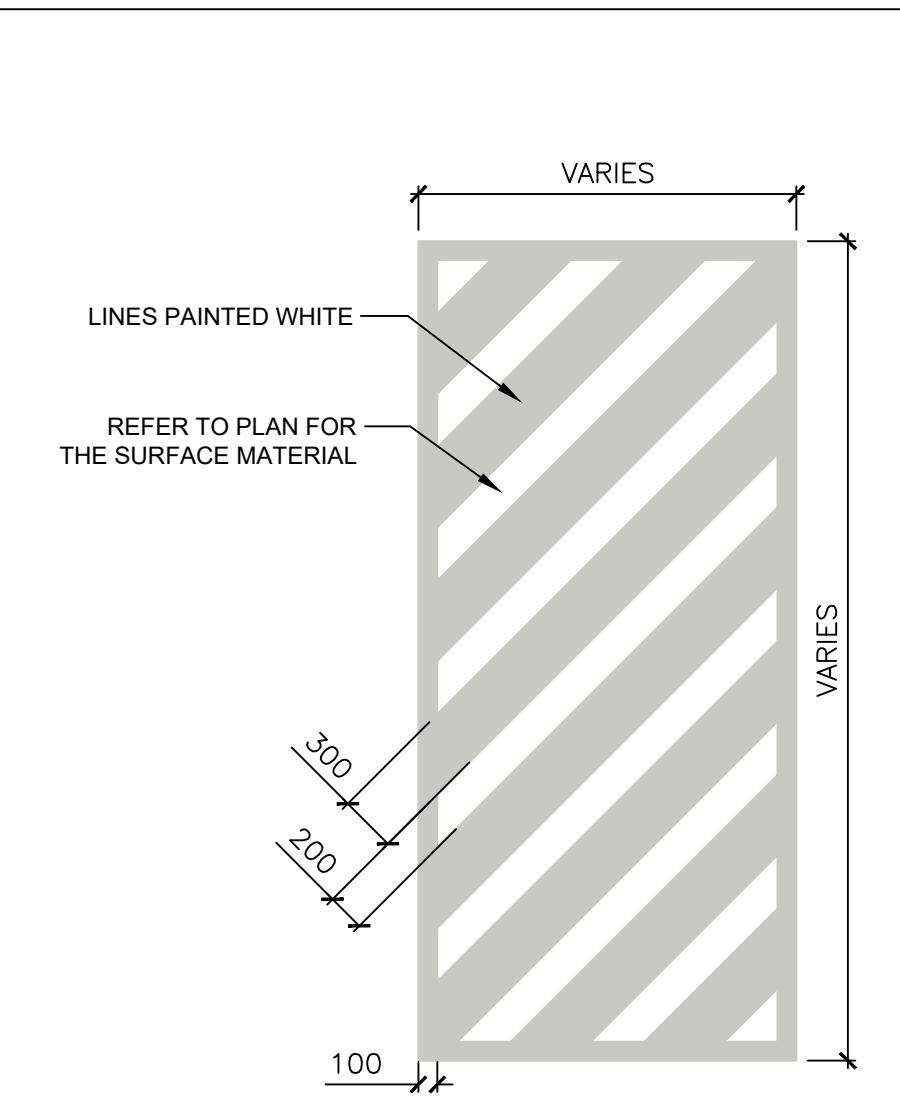


STRATUS SHELTER™
Installation Instructions - Footing Diagram



NOTES:
1) CLASS OF CONCRETE - 20 MPa MIN. AFTER 28 DAYS
2) HAND RAIL TO BE 40mm DIA. STAINLESS STEEL RAIL
3) POSTS SHALL BE VERTICAL. ALL EXPOSED CORNERS TO BE GROUND SMOOTH
4) WELDING SHALL CONFORM TO THE LATEST ISSUE OF CSA SPECIFICATION W 59
5) PIPE SHALL BE SUPPLIED IN ACCORDANCE WITH A STM DESIGNATION A 120
6) ALL METAL TO BE GALVANIZED AND PAINTED TWO COATS FLAT BLACK THROUGH ELECTROSTATIC PROCESS.
7) HAND RAIL WILL BE CONTINUOUSLY GRASPABLE ALONG THE ENTIRE LENGTH OF THE RAMP
8) ALL DIMENSIONS ARE IN MILLIMETERS UNLESS OTHERWISE SHOWN

7 850MM STAINLESS STEEL PIPE HAND RAIL - ACCESSIBLE RAMP
N.T.S. 323117.13-62



8 PAINTED LINES
N.T.S. 324143-13

HENRY KORTEKAAS & ASSOCIATES INC.
LANDSCAPE ARCHITECTS, ARBORISTS, ENVIRONMENTAL & RECREATIONAL PLANNERS
599 LIVERPOOL ROAD PICKERING, ON L1W 1R1 EMAIL: INFO@HKLGA.CA
TEL: 905-589-5599

THESE DRAWINGS ARE INSTRUMENTS OF SERVICE AND THE LANDSCAPE ARCHITECT RETAINS OWNERSHIP OF THESE DRAWINGS. THEY ARE FOR SITE PLAN APPROVAL ONLY AND MAY REQUIRE FURTHER CONSTRUCTION DETAILING AND COORDINATION WITH OTHER ASSOCIATED PROFESSIONAL DESIGN SERVICES BEFORE ACTUAL TENDER AND CONSTRUCTION COMMENCES. DIMENSIONS ARE TO BE VERIFIED PRIOR TO CONSTRUCTION. DRAWINGS ARE NOT TO BE SCALED. IT IS ADVISED THAT CONTRACTORS CONTACT THE LANDSCAPE ARCHITECT PRIOR TO CONSTRUCTION TO ENSURE THE USE OF THE LATEST REVISED DRAWINGS. THE LANDSCAPE ARCHITECT IS NOT LIABLE FOR ERRORS OR OMISSIONS ARISING FROM UTILIZATION OF THESE PLANS BEFORE THE SAID DRAWINGS ARE SCALED, SIGNED AND DATED, AND THE LANDSCAPE ARCHITECT IS CONTRACTED TO PROVIDE CONSTRUCTION ADMINISTRATION AND CERTIFICATION SERVICES BY THE OWNER. ALL APPARENT DISCREPANCIES ARE TO BE REPORTED IN WRITING TO THE LANDSCAPE ARCHITECT BEFORE CONSTRUCTION COMMENCES.

PROJECT:
TAUNTON VILLAGE DENTAL
510 TAUNTON RD. E. OSHAWA, ON.

DRAWING:
DETAILS

DRAWN BY: RP
CHECKED BY: HJK
JOB NO.: 2016-063

SCALE: AS NOTED
DATE: JUNE, 2016

L-D2
DRAWING 3 of 3

File #2016-063.DWG