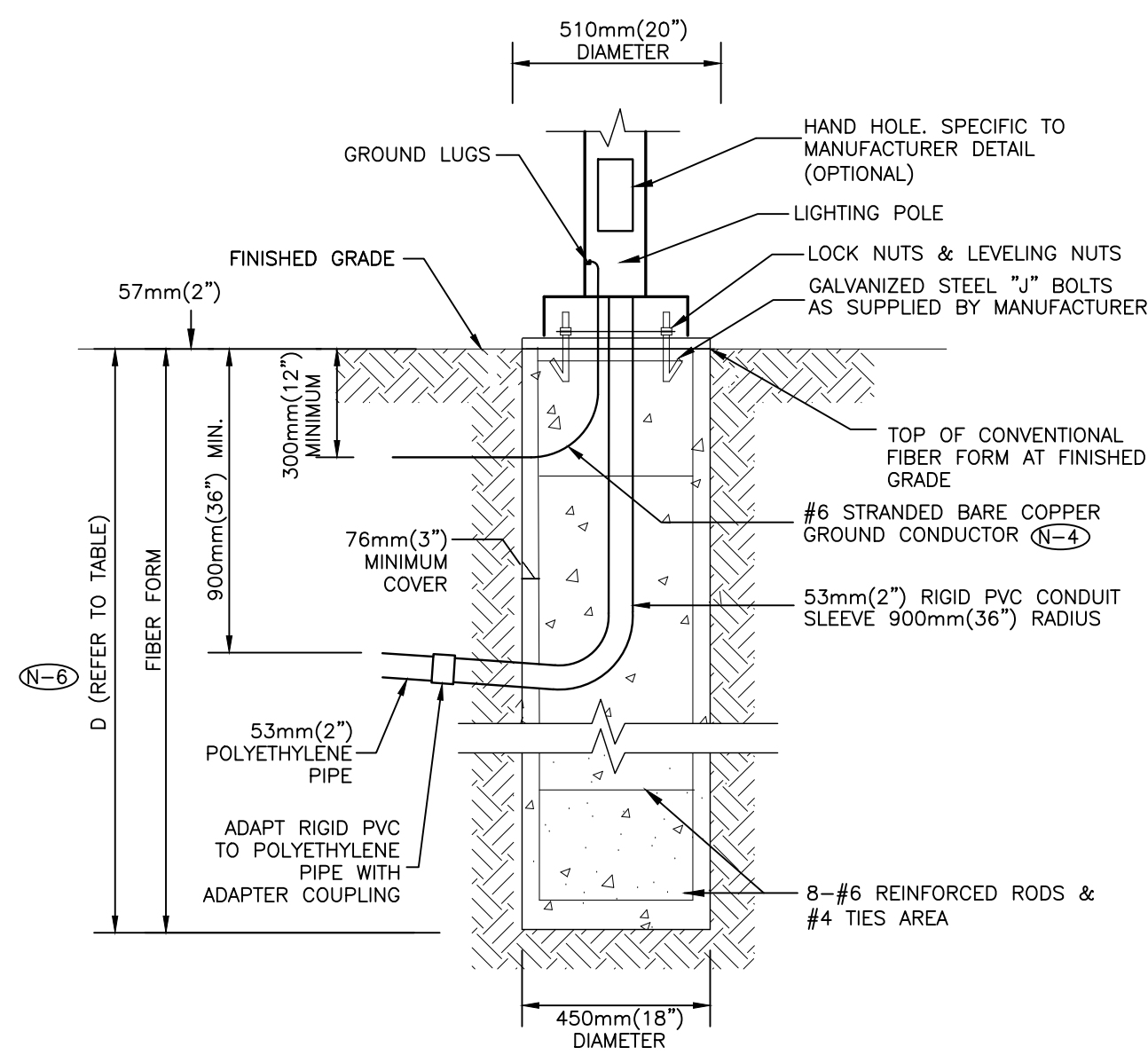


**NOTES:**

- (N-1) TOP OF FOUNDATION SHALL BE TROWELLED SMOOTH & LEVEL.
- (N-2) CLASS OF CONCRETE SHALL BE 25MPa (3500 P.S.I.) CONCRETE SHALL BE VIBRATED.
- (N-3) MINIMUM OF TWO SLEEVES REQUIRED FOR EACH CONC. FOUNDATION UNLESS OTHERWISE SHOWN.
- (N-4) PROVIDE A 20mm (0.75") DIAMETER 3000mm(10') STEEL COPPER COATED GROUND ROD ADJACENT TO POLES AS SPECIFIED ON PLAN AND CONNECT TO METAL POLE WITH BARE COPPER CONDUCTOR.
- (N-5) CONTRACTOR TO VERIFY OPENING SIZE IN POLE BASE PLATE PRIOR TO SETTING CONDUIT SLEEVES.
- (N-6) SUBJECT TO SOIL CONDITIONS, REFER TO SOIL REPORT.
- (N-7) FORM RELEASE AGENT HAS BEEN FACTORY-APPLIED TO INSIDE SURFACE OF "A"FORM.
- (N-8) CHAMFER ALL EDGES ABOVE GRADE.
- (N-9) SOIL BEARING CAPACITY AND CONCRETE BASE DIMENSIONS TO BE CONFIRMED BY ELECTRICAL CONTRACTOR PRIOR TO INSTALLATION.
- (N-10) FOR FINISHING, REFER TO ARCHITECTURAL PLANS.
- (N-11) HEIGHTS VARIES, REFER TO ARCHITECTURAL PLANS.
- (N-12) FOR EXACT CONCRETE, REBAR, AND DEPTH SEE STRUCTURAL ENGINEERING DRAWINGS.
- (N-13) POLE TO BE GROUNDED.
- (N-14) THIS DETAIL IS PROVIDED FOR INSTALLATION REQUIREMENTS WHERE THE ARCHITECTURAL DRAWINGS DO NOT SPECIFY A BASE DETAIL. THIS DETAIL SHALL BE USED FOR ELECTRICAL INSTALLATION REQUIREMENTS. COORDINATE ALL SITE WORK WITH THE ARCHITECTURAL DRAWINGS.

POLE LENGTH		BASE BURIAL DEPTH D		REINFORCED ROD LENGTH	
(ft.)	(m)	(ft.)	(m)	(ft.)	(m)
10	3.0	5	1.50	H + 4.5	H + 1.35
19	5.6	7	2.15	H + 6.5	H + 2
23	7.0	7	2.15	H + 6.5	H + 2
25	7.5	7	2.15	H + 6.5	H + 2
29	8.7	8	2.45	H + 7.5	H + 2.3
30	9.0	8	2.45	H + 7.5	H + 2.3
35	10.5	8.5	2.60	H + 8.0	H + 2.45

4 HIGH BASE ARTFORM LIGHTING POLE, FLAGPOLE, FLOODLIGHT, SIGN AND CONCRETE BASE FOR PARKING AREAS  
SCALE: N.T.S.

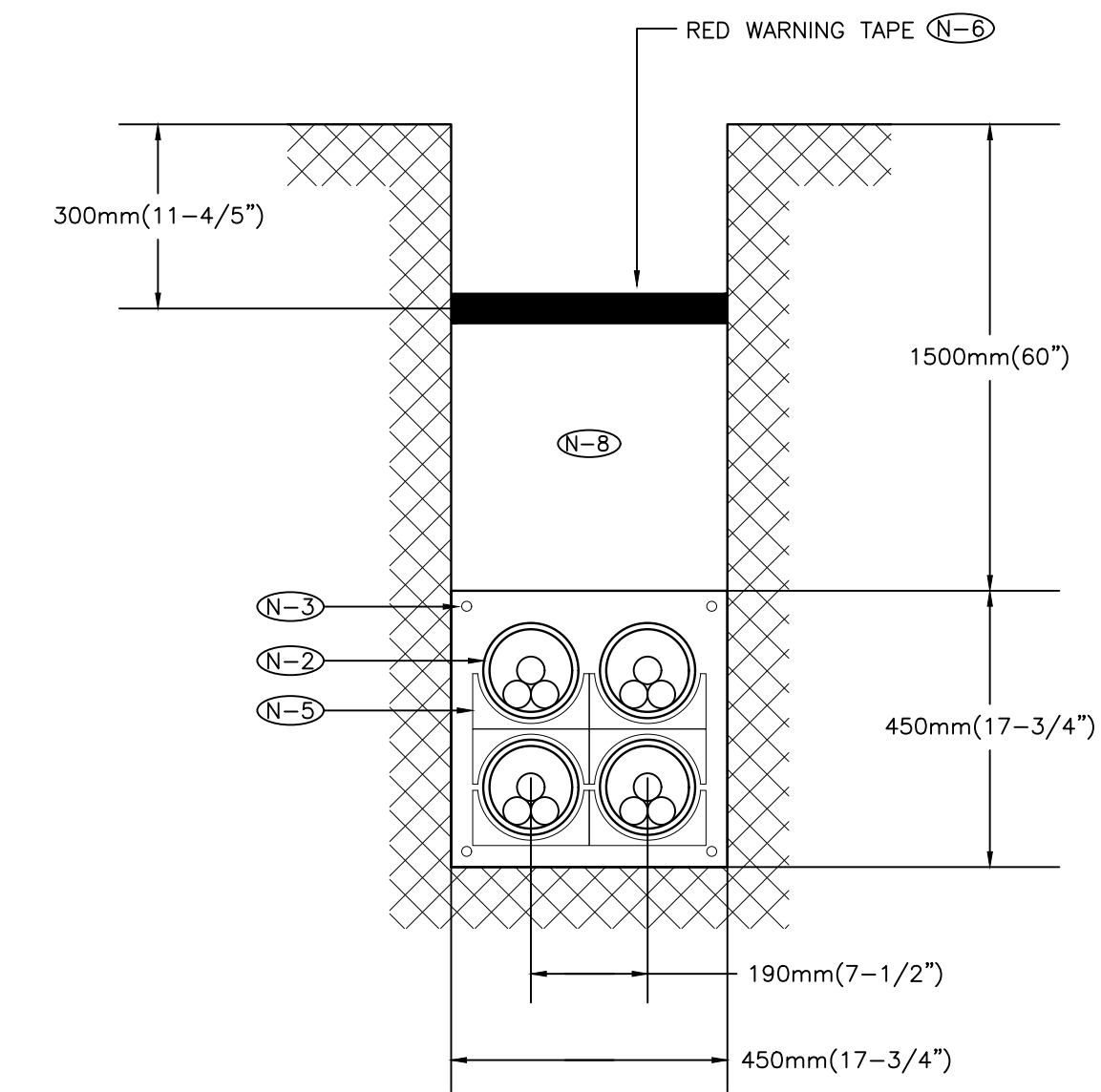


**NOTES:**

- (N-1) TOP OF FOUNDATION SHALL BE TROWELLED SMOOTH & LEVEL.
- (N-2) CLASS OF CONCRETE SHALL BE 25MPa (3500 P.S.I.) CONCRETE SHALL BE VIBRATED.
- (N-3) MINIMUM OF TWO SLEEVES REQUIRED FOR EACH CONC. FOUNDATION UNLESS OTHERWISE SHOWN.
- (N-4) PROVIDE A 20mm (0.75") DIAMETER 3000mm(10') STEEL COPPER COATED GROUND ROD ADJACENT TO POLES AS SPECIFIED ON PLAN AND CONNECT TO METAL POLE WITH BARE COPPER CONDUCTOR.
- (N-5) CONTRACTOR TO VERIFY OPENING SIZE IN POLE BASE PLATE PRIOR TO SETTING CONDUIT SLEEVES.
- (N-6) SUBJECT TO SOIL CONDITIONS, REFER TO SOIL REPORT.
- (N-7) CHAMFER ALL EDGES ABOVE GRADE.
- (N-8) SOIL BEARING CAPACITY AND CONCRETE BASE DIMENSIONS TO BE CONFIRMED BY ELECTRICAL CONTRACTOR PRIOR TO INSTALLATION.
- (N-9) FOR FINISHING, REFER TO ARCHITECTURAL PLANS.
- (N-10) HEIGHTS VARY, REFER TO ARCHITECTURAL PLANS.
- (N-11) FOR EXACT CONCRETE, REBAR, AND DEPTH SEE STRUCTURAL ENGINEERING DRAWINGS.
- (N-12) POLE TO BE GROUNDED.
- (N-13) THIS DETAIL IS PROVIDED FOR INSTALLATION REQUIREMENTS WHERE THE ARCHITECTURAL DRAWINGS DO NOT SPECIFY A BASE DETAIL. THIS DETAIL SHALL BE USED FOR ELECTRICAL INSTALLATION REQUIREMENTS. COORDINATE ALL SITE WORK WITH THE ARCHITECTURAL DRAWINGS.

POLE LENGTH		BASE BURIAL DEPTH D		REINFORCED ROD LENGTH	
(ft.)	(m)	(ft.)	(m)	(ft.)	(m)
10	3.0	5	1.50	H + 4.5	H + 1.35
19	5.6	7	2.15	H + 6.5	H + 2
23	7.0	7	2.15	H + 6.5	H + 2
25	7.5	7	2.15	H + 6.5	H + 2
29	8.7	8	2.45	H + 7.5	H + 2.3
30	9.0	8	2.45	H + 7.5	H + 2.3
35	10.5	8.5	2.60	H + 8.0	H + 2.45

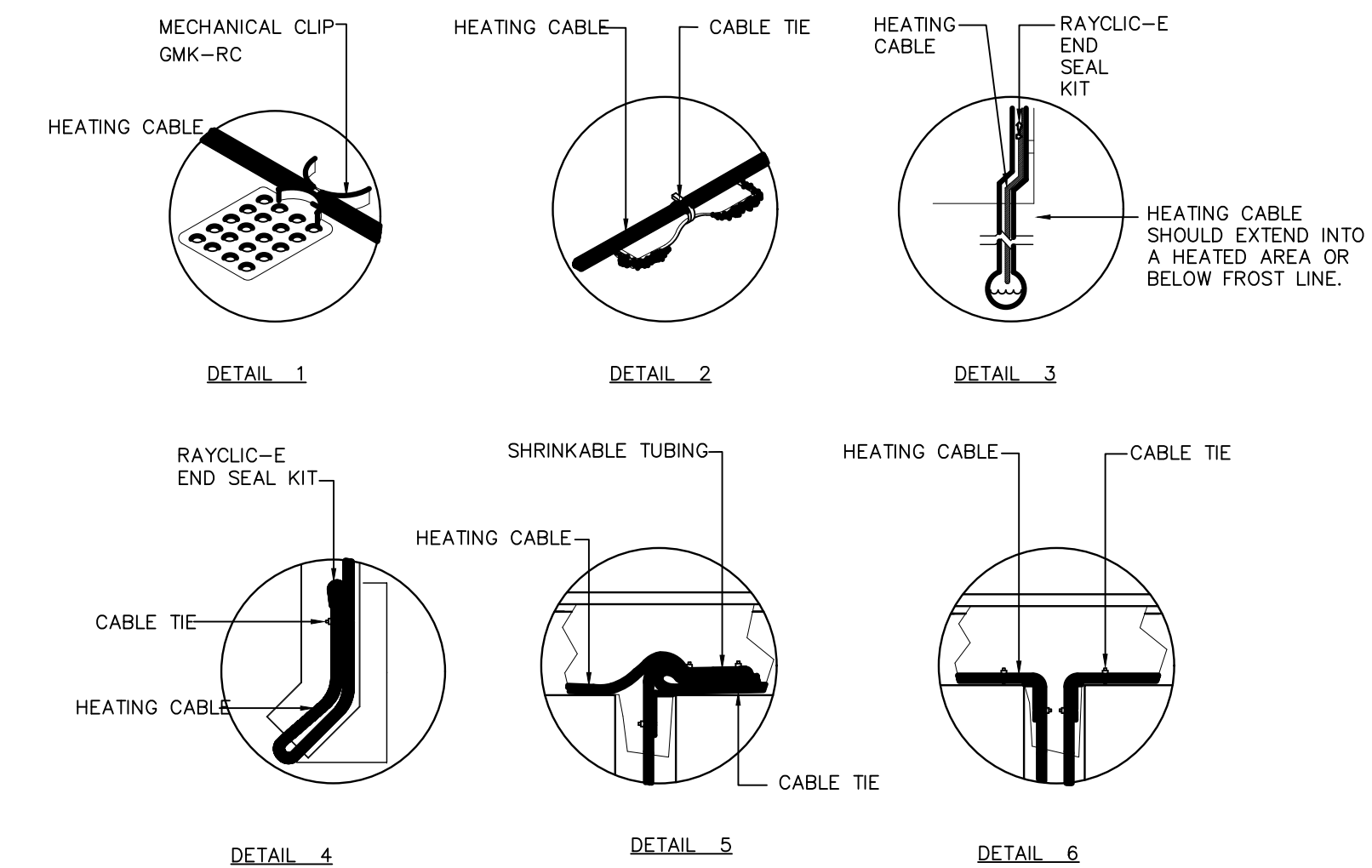
5 LOW BASE PEDESTRIAN WALKWAY LIGHTING POLE ON FINISHED GRADE CONCRETE BASE DETAIL  
SCALE: N.T.S.



**NOTES:**

- (N-1) 9mm (3/8") POLYPROPYLENE ROPE REQUIRED IN ALL DUCTS
- (N-2) REFER TO SITE PLAN FOR CONDUIT SIZE IN 20 MPa CONCRETE. FOR INCOMING SERVICES TO RIVER VALLEY PARK SOUTH DUCTS ARE TO BE 103mm (4") I.D.
- (N-3) 16mm (1/2") REINFORCING RODS
- (N-4) PROVIDE BELL ENDS AT TERMINATION OF ALL DUCTS
- (N-5) PRE-FABRICATES DUCT SPACER AND HOLDERS
- (N-6) RED WARNING TAPE TO EXTEND THE FULL WIDTH OF TRENCH
- (N-7) DUCT BANK TO BE CONSTRUCTED TO HYDRO ONE REQUIREMENTS
- (N-8) CLEAN BACKFILL MATERIAL

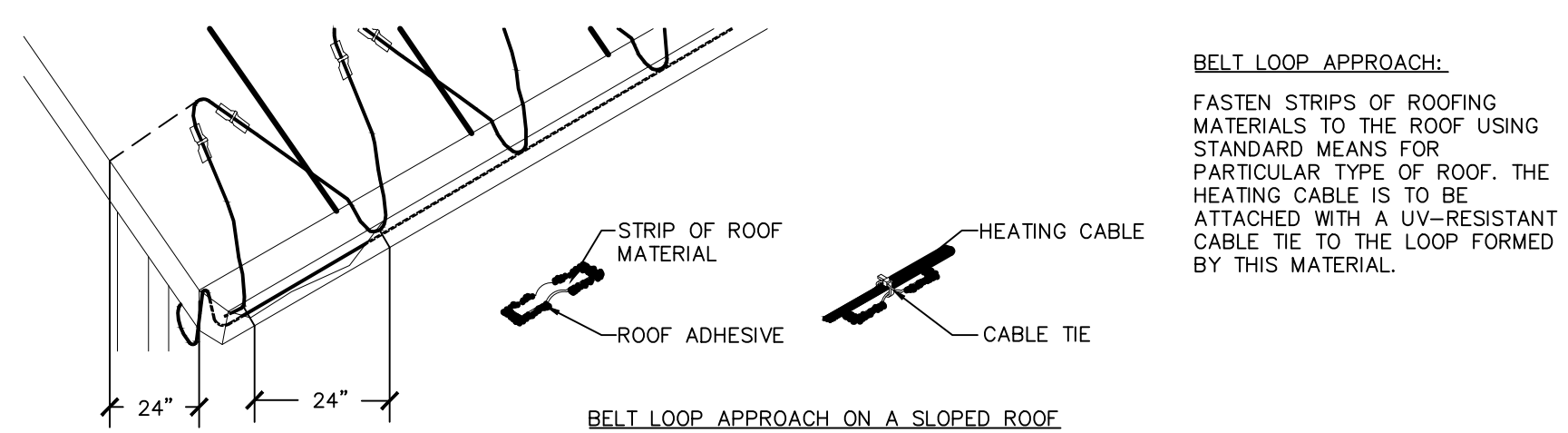
1 PRIMARY CONCRETE ENCASED DUCT BANK - 2x2  
N.T.S.



**NOTES:**

- 1. INSTALLATION TO BE COMPLETED IN ACCORDANCE WITH MANUFACTURER'S SPECIFICATIONS.
- 2. DO NOT SCALE DRAWINGS.

2 ROOF AND GUTTER DE-ICING SYSTEM DETAILS-ROOF CLIPS, GUTTER DOWN SPOUT, SPLICE KIT  
N.T.S.



**NOTES:**

- 1. INSTALLATION TO BE COMPLETED IN ACCORDANCE WITH MANUFACTURER'S SPECIFICATIONS.
- 2. DO NOT SCALE DRAWINGS.

3 ROOF AND GUTTER DE-ICING - DESIGN-BELT LOOP APPROACH  
N.T.S.

Contractor must check and verify all dimensions on the job, and report any discrepancies to the Architect before proceeding with the work. Do not scale this drawing.

**REVISIONS AND ISSUES**

REV	DESCRIPTION	DATE	BY
1	ISSUED FOR COSTING	2021.08.17	
2	ISSUED FOR TENDER	2021.08.27	
3	ISSUED FOR BUILDING PERMIT	2021.09.09	
4	ISSUED FOR REVISED TENDER/BUILDING PERMIT	2022.01.31	
5	ISSUED FOR CONSTRUCTION	2022.07.18	
6			
7			
8			

**MJMA**

maclean jaunkains miller architects

425 adelade street west level 6  
toronto ontario m5v 3c1  
416 593 6796  
www.mjmaarchitects.com

**TRITON ENGINEERING SERVICES LTD**

CIVIL ENGINEERS

18 ROBB BOULEVARD - UNIT 8  
ORANGEVILLE, ONTARIO  
TEL 519 941 0330 FAX 519 941 1830

**BLACKWELL**

STRUCTURAL ENGINEERS

134 PETER STREET, SUITE 1301  
TORONTO, ONTARIO, M5V 2H2  
TEL 416-593-5300 FAX 416-593-4840

**SMITH + ANDERSON**

MECHANICAL AND ELECTRICAL ENGINEERS

1100 - 100 SHEPPARD AVENUE EAST  
TORONTO, ONTARIO, M2N 6N5  
TEL 416-487-8151



Smith + Andersen

1100 - 100 Sheppard Ave. East, Toronto On, M2N 6N5  
416 487 8151 f 416 487 9104 www.smithanderson.com

**SAYERS FOOD LIMITED**

132 BURLEIGH STREET  
t: 705.656.4531  
e: sayers@apsley.ca

NORTH ARROW SEAL

**PROJECT TITLE**

NEW SAYERS FOOD STORE  
BURLEIGH STREET, APSLEY

**DRAWING TITLE**

ELECTRICAL DETAILS

**SCALE**

1:100

**DATE**

JUNE 16, 2021

**PROJECT NUMBER**

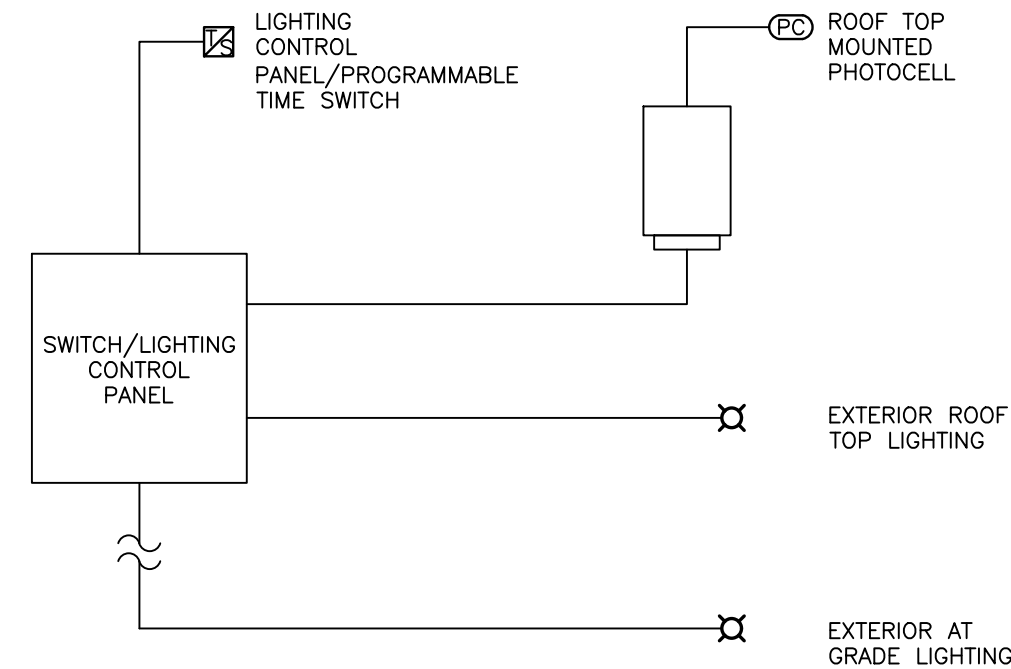
21376.000.e001

**DRAWING NUMBER**

E002

LIGHTING CONTROL SCHEDULE					
TYPE	SYMBOL	DESCRIPTION	MAUFACTURER: CAT. #	APPLICATION	REMARKS
A	(S)	HIGH BAY COLD TEMPERATURE PASSIVE INFRARED OCCUPANCY SENSOR	HB-300C WITH HBL2 LENS	LOADING DOCK MEAT PREP PRODUCE PREP	- STEM MOUNT - MOUNT SENSOR ALIGNED WITH LIGHT FIXTURES
B	(S)	PASSIVE INFRARED WALL SWITCH OCCUPANCY SENSOR	PW-301	WASHROOM	
C	(S)	PASSIVE INFRARED CEILING SENSOR	CI-305	DELI/BAKERY	
D	(S)	DUAL TECHNOLOGY CEILING SENSOR	DT-305	OFFICE STORAGE STAFF LOUNGE	
E	(S)	ULTRASONIC CEILING SENSOR	UT-305-3 HALLWAY	CORRIDOR	
PC	(C)	PHOTOCELL	LMPO-200 c/w LMIN-104	EXTERIOR	
		RELAY PANEL	LMCP8-10V-115/27 7 C/W LENC8S and LMCT-100-2	EXTERIOR	

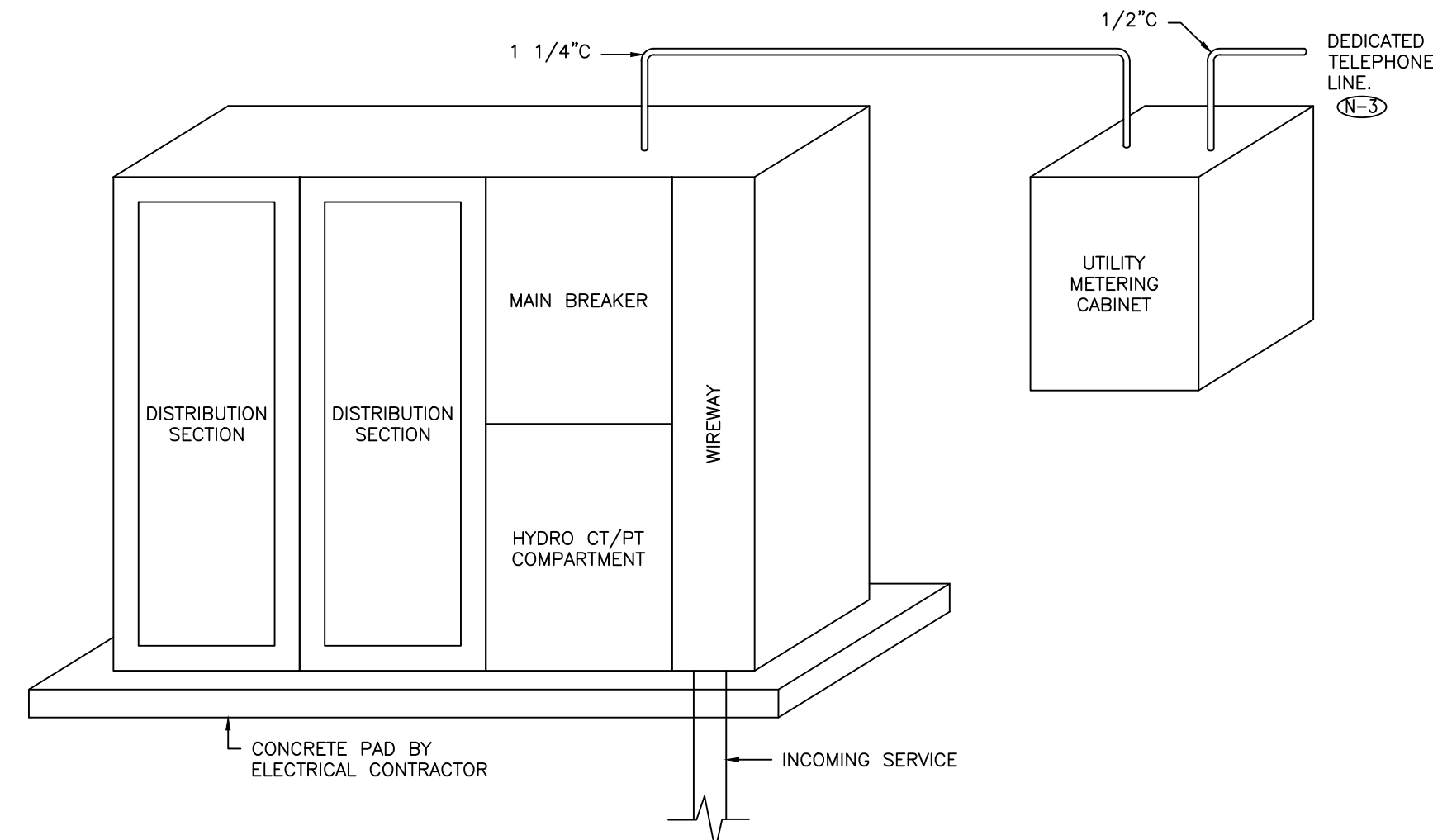
5 LIGHTING CONTROL SCHEDULE N.T.S.



GENERAL NOTES:

- REFER TO FLOOR PLANS FOR LOCATION OF LIGHTING CONTROL DEVICES.
- TIME SWITCH/LIGHTING CONTROL PANEL TO SIGNAL EXTERIOR LIGHTING ON ROOF AND AT GRADE TO TURN ON AND OFF BASED ON TIME SCHEDULE AND EXTERIOR PHOTOCELL CONTROL. CONTRACTOR TO COORDINATE PROGRAMMING OF TIMER WITH OWNER.

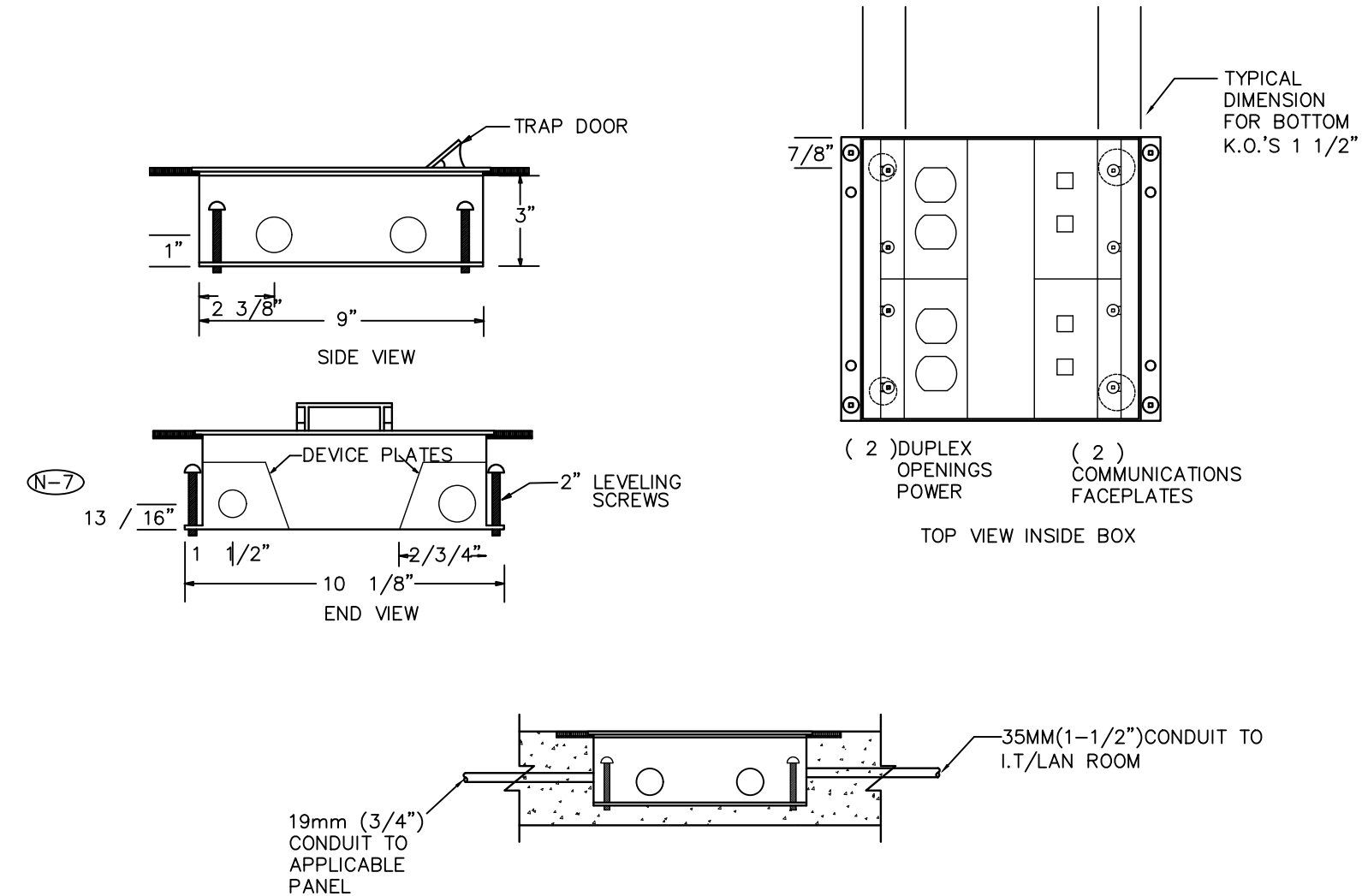
6 TYPICAL OUTDOOR LIGHTING CONTROL DIAGRAM N.T.S.



NOTES:

- WIREWAY LUGS PADS MUST BE COPPER.
- C.T. COMPARTMENT DOORS AND WIREWAY ARE TO BE HINGED AND PADLOCKABLE
- PROVIDE DEDICATED TELEPHONE LINE IN METERING CABINET IN A 19mm(1/2") CONDUIT.

7 MAIN SERVICE ENTRANCE SWITCHBOARD AND METERING CABINET ELEVATION DETAIL N.T.S.

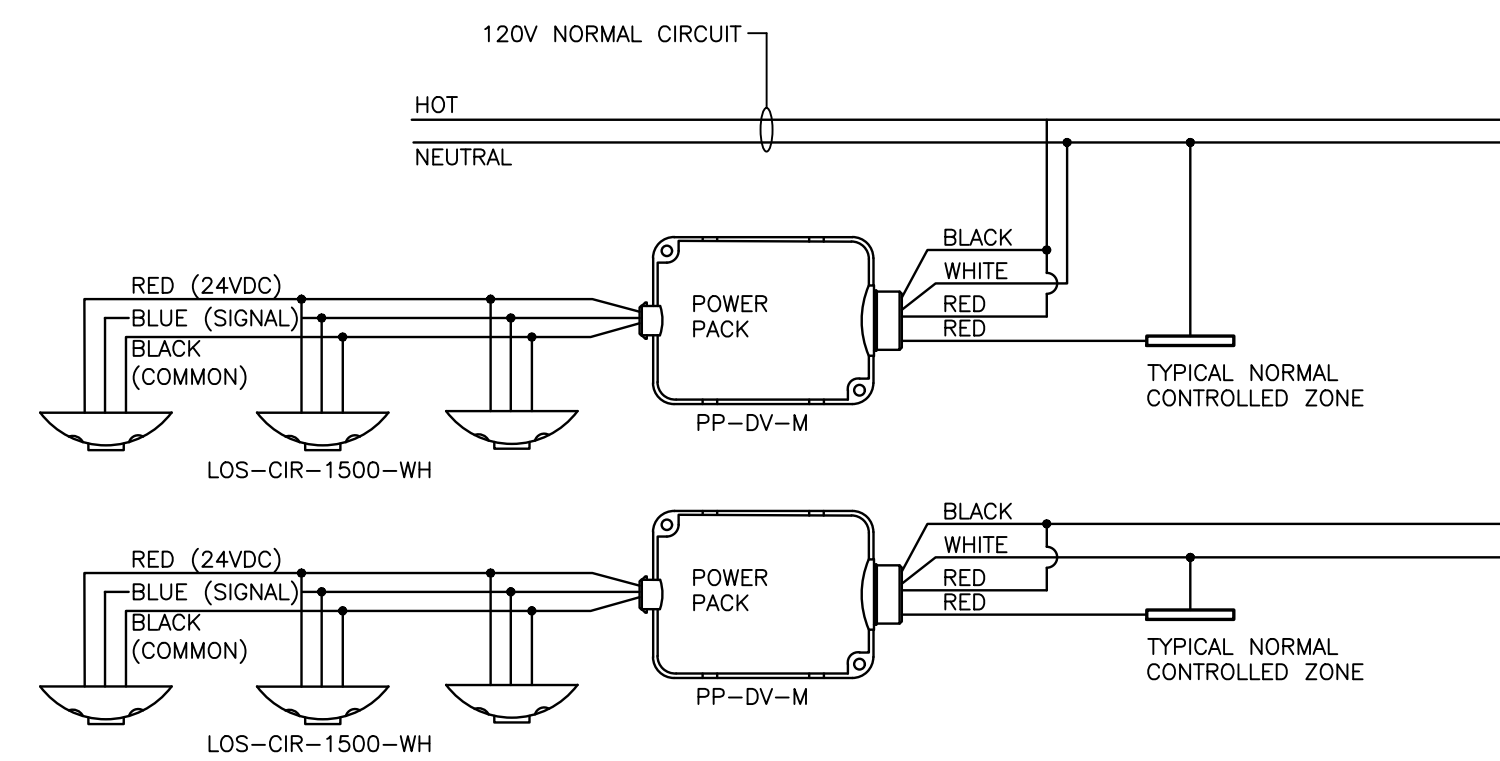


NOTES:

- CO-ORDINATE EXACT LOCATIONS OF FLOOR MONUMENTS ON SITE PRIOR TO ROUGH-IN.
- 'FB1' TYPE FLOOR OUTLETS SHALL BE "WELLMARK 400B SERIES CONCRETE FLOOR BOX" OR APPROVED EQUAL.
- PROVIDE CONNECTOR C/W NYLON BUSHINGS FOR CONDUIT TERMINATIONS WITHIN ACCESSIBLE CEILING SPACE.
- PROVIDE PULL STRING IN ALL EMPTY CONDUITS.
- ALL ITEMS BY ELECTRICAL CONTRACTOR UNLESS NOTED OTHERWISE.
- BOX TO BE CONFIGURED TO ACCEPT BENDING RADIUS OF CAT 6 COMMUNICATION CABLES.
- ALL CONDUIT IS TO ENTER FROM ENDS, NOT FROM THE SIDE.

DRAWING SYMBOLS

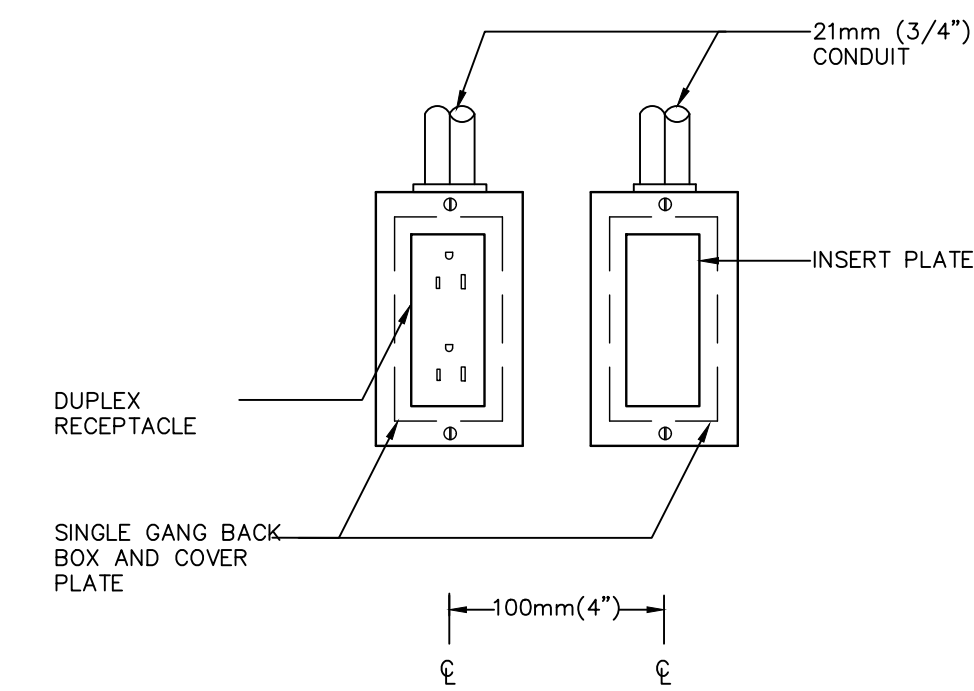
3 FLOOR BOX DETAIL (IN SLAB) N.T.S.



GENERAL NOTES:

- LIGHTING CONTROL SCHEMATIC TO MEET ASHRAE 90.1-2013. COMMON SPACE TYPES 'SALES AREA', 'FOOD PREPARATION AREA', 'LOADING DOCK', 'CORRIDOR', 'ELECTRICAL/MECHANICAL ROOM', 'OFFICE', 'STORAGE ROOM', 'INTERIOR', 'LOUNGE/BREAKROOM'.
- REFER TO 'LIGHTING SEQUENCE OF OPERATION' IN ELECTRICAL SPECIFICATION FOR SEQUENCING REQUIREMENTS.
- LIGHTING IN ROOM SHALL BE NON-DIMMABLE.
- LIGHTING CONTROL MANUFACTURER TO CONFIRM ALL PRODUCT CAT# DURING SHOP DRAWING STAGE.
- DETAIL IS SCHEMATIC. REFER TO MANUFACTURERS INSTRUCTION FOR DETAILED WIRING DIAGRAM.
- BASIS OF DESIGN IS A SALEX LIGHTING CONTROL SYSTEM. ELECTRICAL CONTRACTOR TO PROVIDE REVISED CONTROLS SCHEMATICS, TO BE REVIEWED BY ENGINEER. FOR ANY PROPOSED ALTERNATES, ELECTRICAL CONTRACTOR SHALL BE RESPONSIBLE THAT ANY ALTERNATE MEET THE INTENDED SEQUENCE OF OPERATION, ENERGY CODE REQUIREMENTS AND ENSURE COMPATIBILITY WITH LUMINAIRES.
- MOTION SENSORS SHALL NOT CONTROL AN AREA MORE THAN 334M2 (3600ft2)
- DRAWING SYMBOLS DEPICT WHAT THEY APPEAR ON THE FLOOR PLAN TO SHOW LIGHTING CONTROL DETAIL. REFER TO LIGHTING CONTROL DETAIL 5/E003 FOR OCCUPANCY SENSOR TYPE AND DRAWING SYMBOL. REFER TO FLOOR PLANS E400 SERIES DRAWINGS FOR EXACT LOCATION AND QUANTITY OF ALL LIGHTING CONTROL DEVICES.
- MAXIMUM OF THREE (3) OCCUPANCY SENSORS TO BE CONNECTED TO EACH POWERPAK. REFER TO MANUFACTURER INSTRUCTION MANUAL FOR DETAILS.

2 OCCUPANCY SENSOR WIRING DIAGRAM N.T.S.



DRAWING SYMBOLS

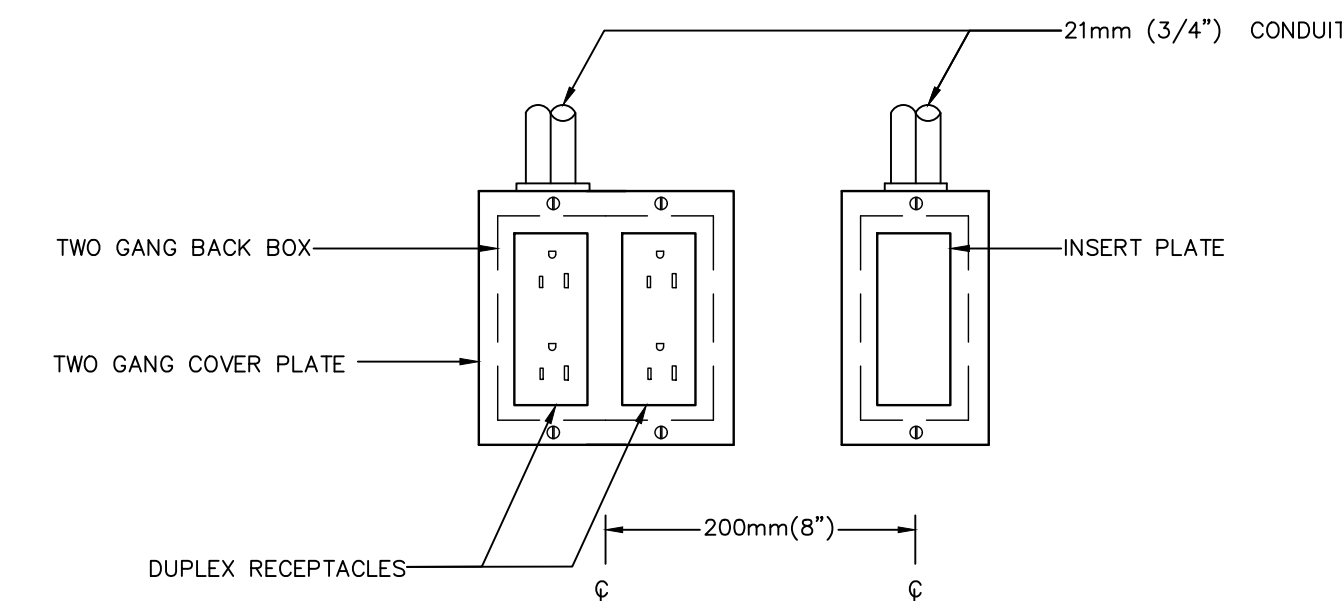
GENERAL NOTES:

- PROVIDE CONNECTOR, C/W NYLON BUSHINGS FOR CONDUIT TERMINATIONS WITHIN ACCESSIBLE CEILING SPACE.
- PROVIDE PULL STRINGS IN ALL EMPTY CONDUIT.

DETAIL NOTES:

- REFER TO SPECIFICATIONS FOR COORDINATION BETWEEN ELECTRICAL AND COMMUNICATIONS CONTRACTORS.
- COMMUNICATIONS CONDUIT TO RUN BACK TO 2ND FLOOR IT ROOM.

1 SINGLE GANG DUPLEX RECEPTACLE W/ COMMUNICATION OUTLETS N.T.S.



DRAWING SYMBOLS

GENERAL NOTES:

- PROVIDE CONNECTOR, C/W NYLON BUSHINGS FOR CONDUIT TERMINATIONS WITHIN ACCESSIBLE CEILING SPACE.
- PROVIDE PULL STRINGS IN ALL EMPTY CONDUIT.

DETAIL NOTES:

- REFER TO SPECIFICATIONS FOR COORDINATION BETWEEN ELECTRICAL AND COMMUNICATIONS CONTRACTORS.
- COMMUNICATIONS CONDUIT TO RUN BACK TO 2ND FLOOR IT ROOM.

2 QUAD DUPLEX RECEPTACLE W/ COMMUNICATION OUTLETS N.T.S.

Contractor must check and verify all dimensions on the job, and report any discrepancies to the Architect before proceeding with the work. Do not scale this drawing.

REVISIONS AND ISSUES

REV	DESCRIPTION	DATE	BY
1	ISSUED FOR COSTING	2021.08.17	
2	ISSUED FOR TENDER	2021.08.27	
3	ISSUED FOR BUILDING PERMIT	2021.09.09	
4	ISSUED FOR ADD-ED1	2021.09.15	
5	ISSUED FOR REVISED TENDER/BUILDING PERMIT	2022.01.31	
6	ISSUED FOR CONSTRUCTION	2022.07.18	
7			
8			

MJMA

macleanman jaunkalns miller architects  
425 adelade street west level 6  
toronto ontario m5v 3c1  
416 593 6796  
www.mjmaarchitects.com

TRITON ENGINEERING SERVICES LTD

CIVIL ENGINEERS  
18 ROBB BOULEVARD - UNIT 8  
ORANGEVILLE, ONTARIO  
TEL 519 941 0330 FAX 519 941 1830

BLACKWELL

STRUCTURAL ENGINEERS  
134 PIETER STREET, SUITE 1301  
TORONTO, ONTARIO, M5V 2H2  
TEL 416.593.5300 FAX 416.593.4840

SMITH + ANDERSON

MECHANICAL AND ELECTRICAL ENGINEERS  
1100 - 100 SHEPPARD AVENUE EAST  
TORONTO, ONTARIO, M2N 6N5  
TEL 416.487.8151



Smith + Andersen

1100 - 100 Sheppard Ave. East, Toronto, ON, M2N 6N5  
416 487 8151 | 416 487 9104 smithanderson.com

SAYERS FOOD LIMITED

132 BURLEIGH STREET  
t: 705.656.4531  
e: sayers@apsley.ca

NORTH ARROW

SEAL

PROJECT TITLE

NEW SAYERS FOOD STORE  
BURLEIGH STREET, APSLEY

DRAWING TITLE

ELECTRICAL DETAILS

SCALE

1:100

DATE

JUNE 16, 2021

PROJECT NUMBER

21376.000.e001

DRAWING NUMBER

E003

Contractor must check and verify all dimensions on the job, and report any discrepancies to the Architect before proceeding with the work. Do not scale this drawing.

REVISIONS AND ISSUES

REV	DESCRIPTION	DATE	BY
1	ISSUED FOR REVISED TENDER/BUILDING PERMIT	2022.01.31	
2	ISSUED FOR CONSTRUCTION	2022.07.18	
3			
4			
5			
6			
7			
8			

**MJMA**

maclean jaunkains miller architects  
425 adelside street west level 6  
toronto ontario m5v 3c1  
416 593 6796  
www.mjmaarchitects.com

**TRITON ENGINEERING SERVICES LTD**

CIVIL ENGINEERS  
18 ROBB BOULEVARD - UNIT 8  
ORANGEVILLE, ONTARIO  
TEL 519 941 0330 FAX 519 941 1830

**BLACKWELL**

STRUCTURAL ENGINEERS  
134 PIETER STREET, SUITE 1301  
TORONTO, ONTARIO, M5V 2H2  
TEL 416-593-5300 FAX 416-593-4840

**SMITH + ANDERSON**

MECHANICAL AND ELECTRICAL ENGINEERS  
1100 - 100 SHEPPARD AVENUE EAST  
TORONTO, ONTARIO, M2N 6N5  
TEL 416-487-8151



Smith + Andersen  
1100 - 100 Sheppard Ave. East, Toronto, ON, M2N 6N5  
416-487-8151 | 416-487-8154 | smithanderson.com

**SAYERS FOOD LIMITED**

132 BURLEIGH STREET  
T: 705.656.4531  
e: sayers@apsley.ca

NORTH ARROW	SEAL
-------------	------

PROJECT TITLE  
**NEW SAYERS FOOD STORE  
BURLEIGH STREET, APSLEY**

DRAWING TITLE  
**ELECTRICAL DETAILS**

SCALE  
1:100

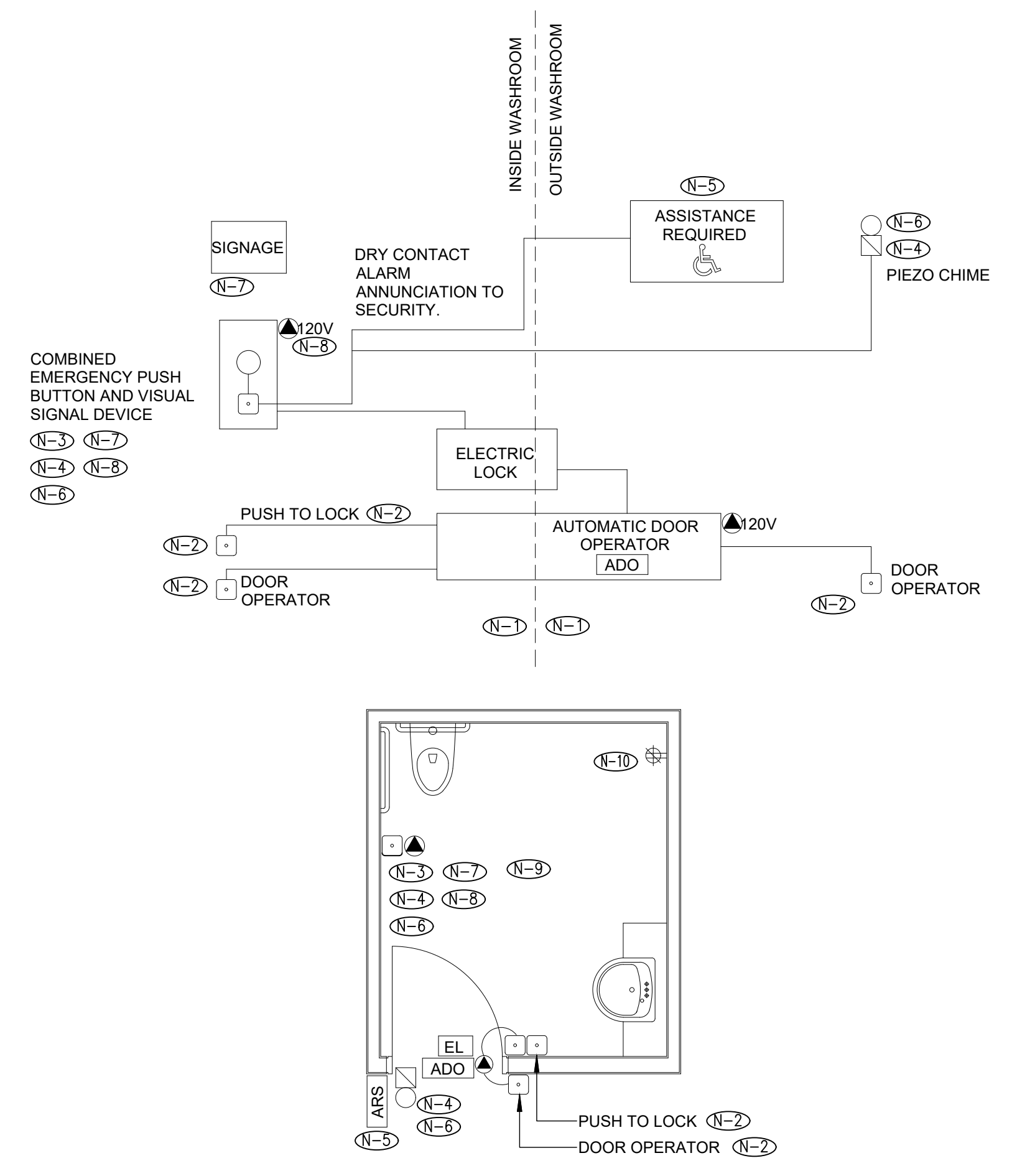
DATE  
**JUNE 16, 2021**

PROJECT NUMBER  
**21376.000.e001**

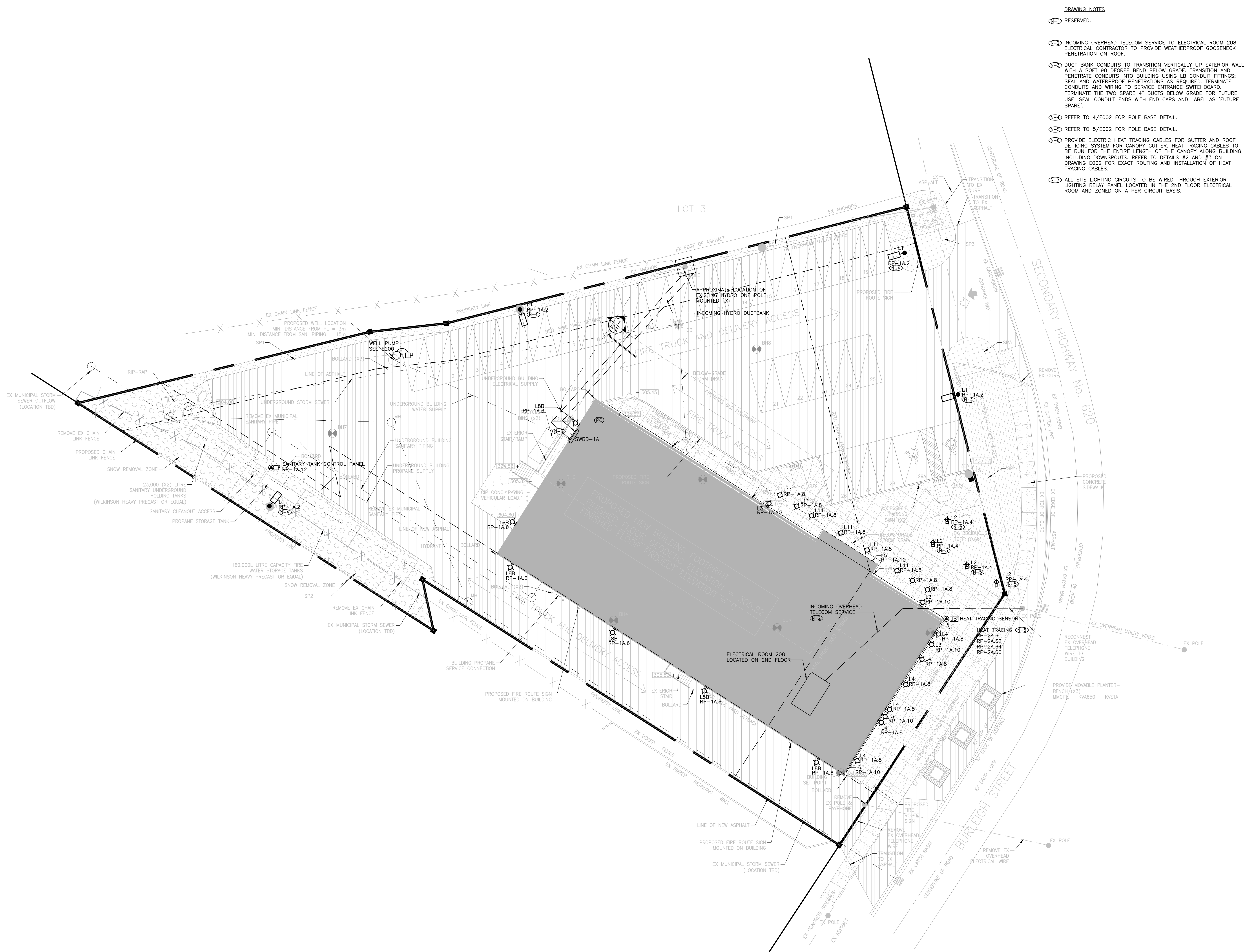
DRAWING NUMBER  
**E004**

DRAWING NOTES:

- (N-1) MINIMUM SIZE CONDUITS SHALL BE 21mmC (3/4") UNLESS OTHERWISE NOTED.
- (N-2) ALL PUSH BUTTONS ARE TO BE MOUNTED AT 1050mm ABOVE FINISHED FLOOR AND ARE TO BE OPERABLE USING A CLOSED FIST.
- (N-3) ELECTRICAL CONTRACTOR TO PROVIDE AND INSTALL EMPTY CONDUIT COMPLETE WITH PULL STRINGS AND BACK BOXES FOR COMBINATION EMERGENCY PUSH BUTTON AND VISUAL SIGNAL DEVICE INSIDE OF WASHROOM. SUBMIT SHOP DRAWINGS FOR ARCHITECT AND CONSULTANT REVIEW PRIOR TO MANUFACTURING/RELEASE.
- (N-4) ELECTRICAL CONTRACTOR TO PROVIDE AND INSTALL WIRING AND CONDUIT BACK TO LOCAL INTRUSION PANEL.
- (N-5) ELECTRICAL CONTRACTOR TO PROVIDE AND INSTALL EMPTY CONDUIT COMPLETE WITH PULL STRINGS AND BACK BOXES FOR 'ASSISTANCE REQUIRED' LED ANNUNCIATOR WITH ADJUSTABLE SOUNDER. SUBMIT SHOP DRAWINGS FOR ARCHITECT AND ELECTRICAL CONSULTANT REVIEW PRIOR TO MANUFACTURING/RELEASE.
- (N-6) ELECTRICAL CONTRACTOR TO PROVIDE ALL CONDUIT, WIRING, POWER SUPPLIES, AND CONNECTIONS DETAILED ABOVE FOR ALL UNIVERSAL WASHROOMS. ALL WIRING TO BE INSTALLED IN CONDUIT.
- (N-7) LAMACOID SIGN ABOVE THE EMERGENCY BUTTON THAT READS 'IN THE EVENT OF AN EMERGENCY, PUSH EMERGENCY BUTTON AND AUDIBLE AND VISUAL SIGNAL WILL ACTIVATE', PROVIDED BY OTHERS. SUBMIT SHOP DRAWINGS FOR ARCHITECT AND CONSULTANT REVIEW PRIOR TO MANUFACTURING AND RELEASE.
- (N-8) ELECTRICAL CONTRACTOR TO PROVIDE AND INSTALL 24 VOLT DC POWER SUPPLY IN A SEPARATE JUNCTION BOX WITH SUFFICIENT CAPACITY TO POWER ALL EMERGENCY CALL SYSTEM COMPONENTS INCLUDING ALL AUDIBLE AND VISUAL INDICATORS AS WELL AS DOOR ELECTRIC LOCK RELEASE. ADDITIONALLY, POWER SUPPLY TO HAVE 50% SPARE CAPACITY FOR FUTURE USE. POWER SUPPLY INPUT TO BE 120V.
- (N-9) REFER TO ARCHITECTURAL DRAWINGS FOR EXACT DEVICE LOCATIONS.
- (N-10) 20A GFI RECEPTACLE FOR ADULT CHANGE TABLE.



1 BARRIER FREE WASHROOM - CONDUIT INFRASTRUCTURE  
ESD.01



**DRAWING NOTES**

- (N-1) RESERVED.
- (N-2) INCOMING OVERHEAD TELECOM SERVICE TO ELECTRICAL ROOM 208. ELECTRICAL CONTRACTOR TO PROVIDE WEATHERPROOF GODSNECK PENETRATION ON ROOF.
- (N-3) DUCT BANK CONDUITS TO TRANSITION VERTICALLY UP EXTERIOR WALL WITH A SOFT 90 DEGREE BEND BELOW GRADE. TRANSITION AND PENETRATE CONDUITS INTO BUILDING USING LB CONDUIT FITTINGS; SEAL AND WATERPROOF PENETRATIONS AS REQUIRED. TERMINATE CONDUITS AND WIRING TO SERVICE ENTRANCE SWITCHBOARD. TERMINATE THE TWO SPARE 4" DUCTS BELOW GRADE FOR FUTURE USE. SEAL CONDUIT ENDS WITH END CAPS AND LABEL AS 'FUTURE SPARE'.
- (N-4) REFER TO 4/E002 FOR POLE BASE DETAIL.
- (N-5) REFER TO 5/E002 FOR POLE BASE DETAIL.
- (N-6) PROVIDE ELECTRIC HEAT TRACING CABLES FOR GUTTER AND ROOF DE-ICING SYSTEM FOR CANOPY GUTTER. HEAT TRACING CABLES TO BE RUN FOR THE ENTIRE LENGTH OF THE CANOPY ALONG BUILDING, INCLUDING DOWNSPOUTS. REFER TO DETAILS #2 AND #3 ON DRAWING E002 FOR EXACT ROUTING AND INSTALLATION OF HEAT TRACING CABLES.
- (N-7) ALL SITE LIGHTING CIRCUITS TO BE WIRED THROUGH EXTERIOR LIGHTING RELAY PANEL LOCATED IN THE 2ND FLOOR ELECTRICAL ROOM AND ZONED ON A PER CIRCUIT BASIS.

Contractor must check and verify all dimensions on the job, and report any discrepancies to the Architect before proceeding with the work. Do not scale this drawing.

REV	DESCRIPTION	DATE	BY
1	ISSUED FOR COSTING	2021.08.17	
2	ISSUED FOR TENDER	2021.08.27	
3	ISSUED FOR BUILDING PERMIT	2021.09.09	
4	ISSUED FOR ADD-E01	2021.09.15	
5	ISSUED FOR ADD-E03	2021.09.27	
6	ISSUED FOR REVISED TENDER/BUILDING PERMIT	2022.01.31	
7	ISSUED FOR SI-E-01	2022.06.15	
8	ISSUED FOR CONSTRUCTION	2022.07.18	

**MJMA**  
 maclean jaunkalns miller architects  
 425 adelade street west level 6  
 toronto ontario m5v 3c1  
 416 593 6796  
 www.mjmaarchitects.com

**TRITON ENGINEERING SERVICES LTD**  
 CIVIL ENGINEERS  
 18 ROBB BOULEVARD - UNIT 8  
 ORANGEVILLE, ONTARIO  
 TEL 519 941 0330 FAX 519 941 1830

**BLACKWELL**  
 STRUCTURAL ENGINEERS  
 134 PETER STREET, SUITE 1301  
 TORONTO, ONTARIO, M5V 2H2  
 TEL 416.593.5300 FAX 416.593.4840

**SMITH + ANDERSON**  
 MECHANICAL AND ELECTRICAL ENGINEERS  
 1100 - 100 SHEPPARD AVENUE EAST  
 TORONTO, ONTARIO, M2N 6N5  
 TEL 416.487.8151

**Smith + Andersen**  
 1100 - 100 Sheppard Ave. East, Toronto On, M2N 6N5  
 416 487 8151 / 416 487 9104 smithanderson.com

**SAYERS FOOD LIMITED**  
 132 BURLEIGH STREET  
 t: 705.656.4531  
 e: sayers@apsley.ca

**PROJECT TITLE**  
 NEW SAYERS FOOD STORE  
 BURLEIGH STREET, APSLEY

**DRAWING TITLE**  
 SITE PLAN - ELECTRICAL

**SCALE**  
 1:200

**DATE**  
 JUNE 16, 2021

**PROJECT NUMBER**  
 21376.000.e001

**DRAWING NUMBER**  
 E100



Contractor must check and verify all dimensions on the job, and report any discrepancies to the Architect before proceeding with the work. Do not scale this drawing.

REV	DESCRIPTION	DATE	BY
1	ISSUED FOR COSTING	2021.08.17	
2	ISSUED FOR TENDER	2021.08.27	
3	ISSUED FOR BUILDING PERMIT	2021.09.09	
4	ISSUED FOR ADD-E01	2021.09.15	
5	ISSUED FOR ADD-E03	2021.09.27	
6	ISSUED FOR REVISED TENDER/BUILDING PERMIT	2022.01.31	
7	ISSUED FOR CONSTRUCTION	2022.07.18	
8			

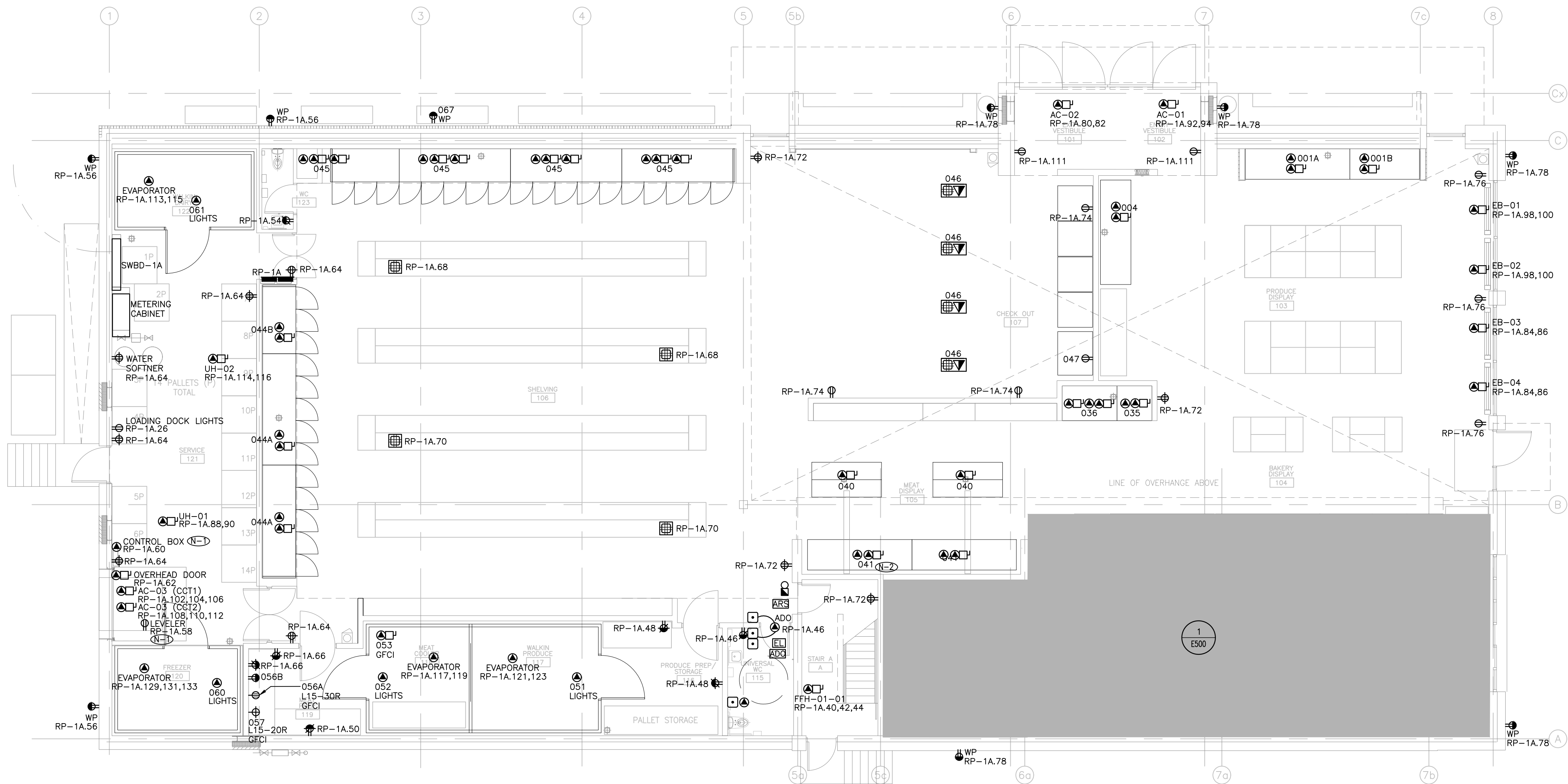
**MJMA**  
 maclean jaunkains miller architects  
 425 adelade street west level 6  
 toronto ontario m5v 3c1  
 416 593 6796  
 www.mjmaarchitects.com

**TRITON ENGINEERING SERVICES LTD**  
 CIVIL ENGINEERS  
 18 ROBB BOULEVARD - UNIT 8  
 ORANGEVILLE, ONTARIO  
 TEL 519 941 0330 FAX 519 941 1830

**BLACKWELL**  
 STRUCTURAL ENGINEERS  
 134 PETER STREET, SUITE 1301  
 TORONTO, ONTARIO, M5V 2H2  
 TEL 416-593-5300 FAX 416-593-4840

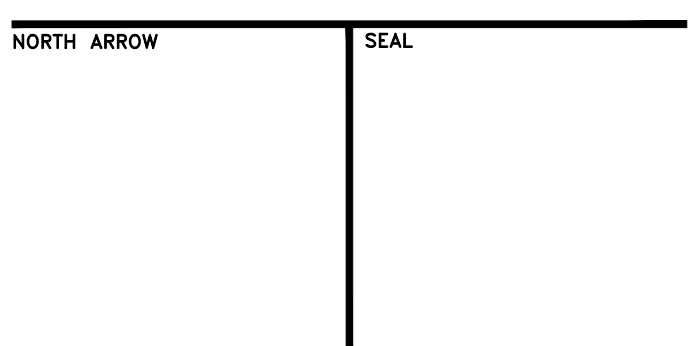
**SMITH + ANDERSON**  
 MECHANICAL AND ELECTRICAL ENGINEERS  
 1100 - 100 SHEPPARD AVENUE EAST  
 TORONTO, ONTARIO, M2N 6N5  
 TEL 416-487-8151

**Smith + Andersen**  
 1100 - 100 Sheppard Ave. East, Toronto On, M2N 6N5  
 416 487 8151 f 416 487 9104 smithanderson.com



EQUIPMENT SCHEDULE												
LEVEL 1												
ITEM NO.	QTY	LOCATION	DESCRIPTION	PANEL NUMBER	CIRCUIT NUMBER	CONNECTION TYPE	VOLTAGE (V)	CYCLE (HZ)	PHASE	AMPS (A)	HP	CONNECTED LOAD (W)
001A	1	103 - PRODUCE DISPLAY	12' PRODUCE COOLER	RP-1A 1	DC	120	60	1	0.57			60
			FANS	RP-1A 14	DC	120	60	1	0.72			86.4
			LIGHTS	RP-1A 3	DC	120	60	1	0.38			45
001B	1	103 - PRODUCE DISPLAY	8' PRODUCE COOLER	RP-1A 14	DC	120	60	1	0.48			57.6
			FANS	RP-1A 5	DC	120	60	1	0.57			45
			LIGHTS	RP-1A 14	DC	120	60	1	2.25			15
035	1	105 - MEAT DISPLAY	2' MEAT COOLER	RP-1A 7	DC	120	60	1	0.19			15
			FANS	RP-1A 14	DC	120	60	1	0.41			43.2
			LIGHTS	RP-1A 9	DC	120	60	1	4.98			1400
036	1	105 - MEAT DISPLAY	2' DOOR BAKERY FREEZER	RP-1A 11, 13	DC	208	60	1	6.72			1400
			ELECTRIC DEFROST HEATER	RP-1A 17, 19, 21, 22	DC	208	60	1	8.08			30
040	2	105 - MEAT DISPLAY	MEAT BUNKER	RP-1A 25	DC	120	60	1	1.52			
			FANS	RP-1A 14	DC	120	60	1	1.75			
041	2	105 - MEAT DISPLAY	12' MEAT SHELF	RP-1A 29	DC	120	60	1	2.87			
			FANS & HEAT	RP-1A 56	DC	120	60	1	0.84			100.5
044A	2	106 - SHELVING	5 DOOR DAIRY SHELVING	RP-1A 53	DC	120	60	1	3.12			
			FANS & HEAT	RP-1A 55	DC	120	60	1	15.87			
044B	1	106 - SHELVING	3 DOOR DAIRY SHELVING	RP-1A 56	DC	120	60	1	0.53			63.8
			FANS & HEAT	RP-1A 55	DC	120	60	1	15.87			
045	4	106 - SHELVING	5 DOOR FREEZER SHELVING	RP-1A 36	DC	120	60	1	0.84			100.5
			FANS & HEAT	RP-1A 37, 39, 41, 43, 45, 47, 49, 51, 53	DC	208	60	3	16.82			3500
			ELECTRIC DEFROST HEATER	RP-1A 67, 69, 71, 73	DC	208	60	1	2.5			
046	4	107 - CHECKOUT	CHECKOUT	RP-1A 75	FLOORBOX	120	60	1	2.5			
047	1	107 - CHECKOUT	ICE MACHINE	RP-1A 58	NEMA 5-15R	120	60	1				15
051	1	117 - WALKIN PRODUCE	COOLER	RP-1A 77	DC	120	60	1				15
			LIGHTS	RP-1A 20	DC	120	60	1				15
052	1	118 - MEAT COOLER	COOLER	RP-1A 79	DC	120	60	1				15
053	1	118 - MEAT COOLER	MEAT GRINDER	RP-1A 81, 83, 85	DC	208	60	3	13.29		5	2660
056A	1	119 - MEAT PREP	MEAT GRINDER	RP-1A 87, 89, 91	L15-30R	208	60	3			7.5 (GRIND 1 MAX)	
056B	1	119 - MEAT PREP	MEAT GRINDER - TENDERIZER ADD-ON	RP-1A 93	NEMA 5-15R	120	60	1	4		1/2	460
057	1	119 - MEAT PREP	MEAT BONE SAW, ELECTRIC	RP-1A 95, 97, 99	L15-20R	208	60	3	7.25		3	1595
060	1	120 - FREEZER	FREEZER	RP-1A 22	DC	120	60	1				15
			LIGHTS	RP-1A 101, 103, 105	DC	208	60	1				15
061	1	121 - WALKIN DAIRY	COOLER	RP-1A 24	DC	120	60	1				15
			LIGHTS	RP-1A 107	DC	120	60	1				15
067	1	000 - EXTERIOR	ICE MACHINE	RP-1A 109	NEMA 5-15R	120	60	1				15

GENERAL NOTES:  
 (1) RECEPTACLE FOR AIR ACTIVATED LEVELER TO BE FLUSH MOUNTED AND WIRED THROUGH THE PUSH BUTTON STATION PER LEVELER'S USER MANUAL WIRING DIAGRAM. ELECTRICAL CONTRACTOR TO PROVIDE 3/4" CONDUITS FROM RECEPTACLE TO CONTROL BOX. CONDUITS AND RECEPTACLE TO BE SET BEFORE POURING CONCRETE.  
 (2) REFER TO EQUIPMENT SCHEDULE FOR ITEM NUMBER AND CORRESPONDING CIRCUIT NUMBER(S). TYPICAL.



PROJECT TITLE  
**NEW SAYERS FOOD STORE  
 BURLINGHAM STREET, APSLEY**

DRAWING TITLE  
**GROUND LEVEL - POWER  
 AND SYSTEMS**

SCALE  
**1:100**

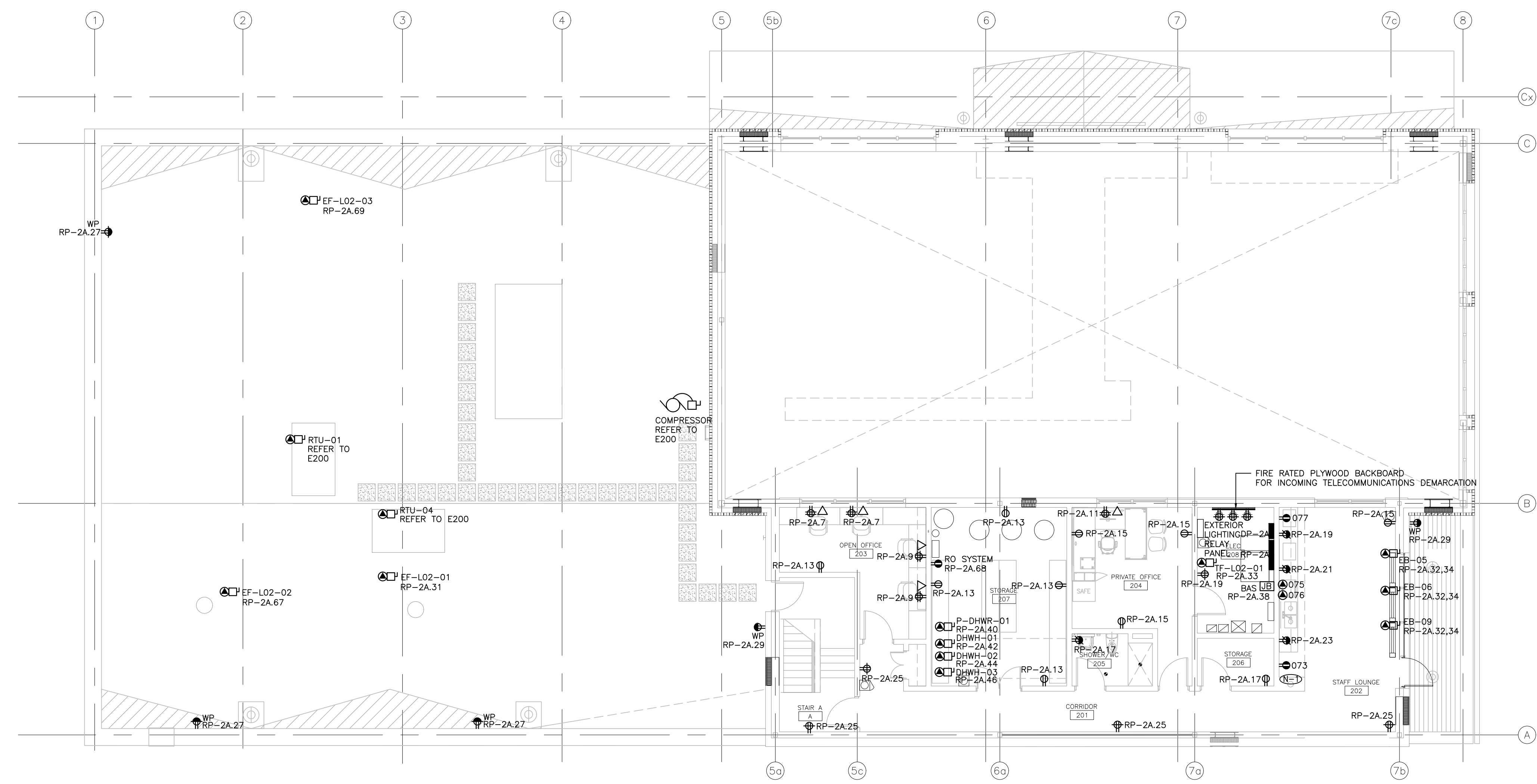
DATE  
**JUNE 16, 2021**

PROJECT NUMBER  
**21376.000.e001**

DRAWING NUMBER  
**E300**



DRAWING NOTES:  
 REFER TO EQUIPMENT SCHEDULE FOR ITEM NUMBER AND CORRESPONDING CIRCUIT NUMBER(S). TYPICAL.



EQUIPMENT SCHEDULE														
LEVEL 2														
ITEM NO.	QTY	LOCATION	DESCRIPTION	PANEL	CIRCUIT NUMBER	CONNECTION TYPE	VOLTAGE (V)	CYCLE (HZ)	PHASE	AMPS (A)	HP	CONNECTED LOAD (W)	ANOP (A)	NCA (A)
033														
034														
051														
052														
061														
073	1	202 - STAFF LOUNGE	RESIDENTIAL FRIDGE	RP-2A	1	NEMA 5-15R	120	60	1				15 OR 20	
075	1	203 - STAFF LOUNGE	STOVE - STANDARD ELECTRIC RANGE/OVEN	RP-2A	56&1,63	DC	208	60	3				50	
076	1	203 - STAFF LOUNGE	STOVE - WOOD	RP-2A	65	DC	320	60	1				15	
077	1	204 - STAFF LOUNGE	MICROWAVE	RP-2A	3	NEMA 5-15R	120	60	1	13		1300		

Contractor must check and verify all dimensions on the job, and report any discrepancies to the Architect before proceeding with the work. Do not scale this drawing.

REVISIONS AND ISSUES			
REV	DESCRIPTION	DATE	BY
1	ISSUED FOR COSTING	2021.08.17	
2	ISSUED FOR TENDER	2021.08.27	
3	ISSUED FOR BUILDING PERMIT	2021.09.09	
4	ISSUED FOR ADD-E01	2021.09.15	
5	ISSUED FOR ADD-E02	2021.09.23	
6	ISSUED FOR ADD-E03	2021.09.27	
7	ISSUED FOR REVISED TENDER/BUILDING PERMIT	2022.01.31	
8	ISSUED FOR CONSTRUCTION	2022.07.18	

**MJMA**  
 maclean jaunkains miller architects  
 425 adelaide street west level 6  
 toronto ontario m5v 3c1  
 416 593 6796  
 www.mjmaarchitects.com

**TRITON ENGINEERING SERVICES LTD**  
 CIVIL ENGINEERS  
 18 ROBB BOULEVARD - UNIT 8  
 ORANGEVILLE, ONTARIO  
 TEL 519 941 0330 FAX 519 941 1830

**BLACKWELL**  
 STRUCTURAL ENGINEERS  
 134 PETER STREET, SUITE 1301  
 TORONTO, ONTARIO, M5V 2H2  
 TEL 416-593-5300 FAX 416-593-4840

**SMITH + ANDERSON**  
 MECHANICAL AND ELECTRICAL ENGINEERS  
 1100 - 100 SHEPPARD AVENUE EAST  
 TORONTO, ONTARIO, M2N 6N5  
 TEL 416-487-8151

1100 - 100 Sheppard Ave. East, Toronto On, M2N 6N5  
 416 487 8151 f 416 487 9104 smithandanderson.com

**SAYERS FOOD LIMITED**  
 132 BURLEIGH STREET  
 t: 705.656.4531  
 e: sayers@apsley.ca

NORTH ARROW SEAL

PROJECT TITLE  
**NEW SAYERS FOOD STORE  
 BURLEIGH STREET, APSLEY**

DRAWING TITLE  
**SECOND LEVEL - POWER  
 AND SYSTEMS**

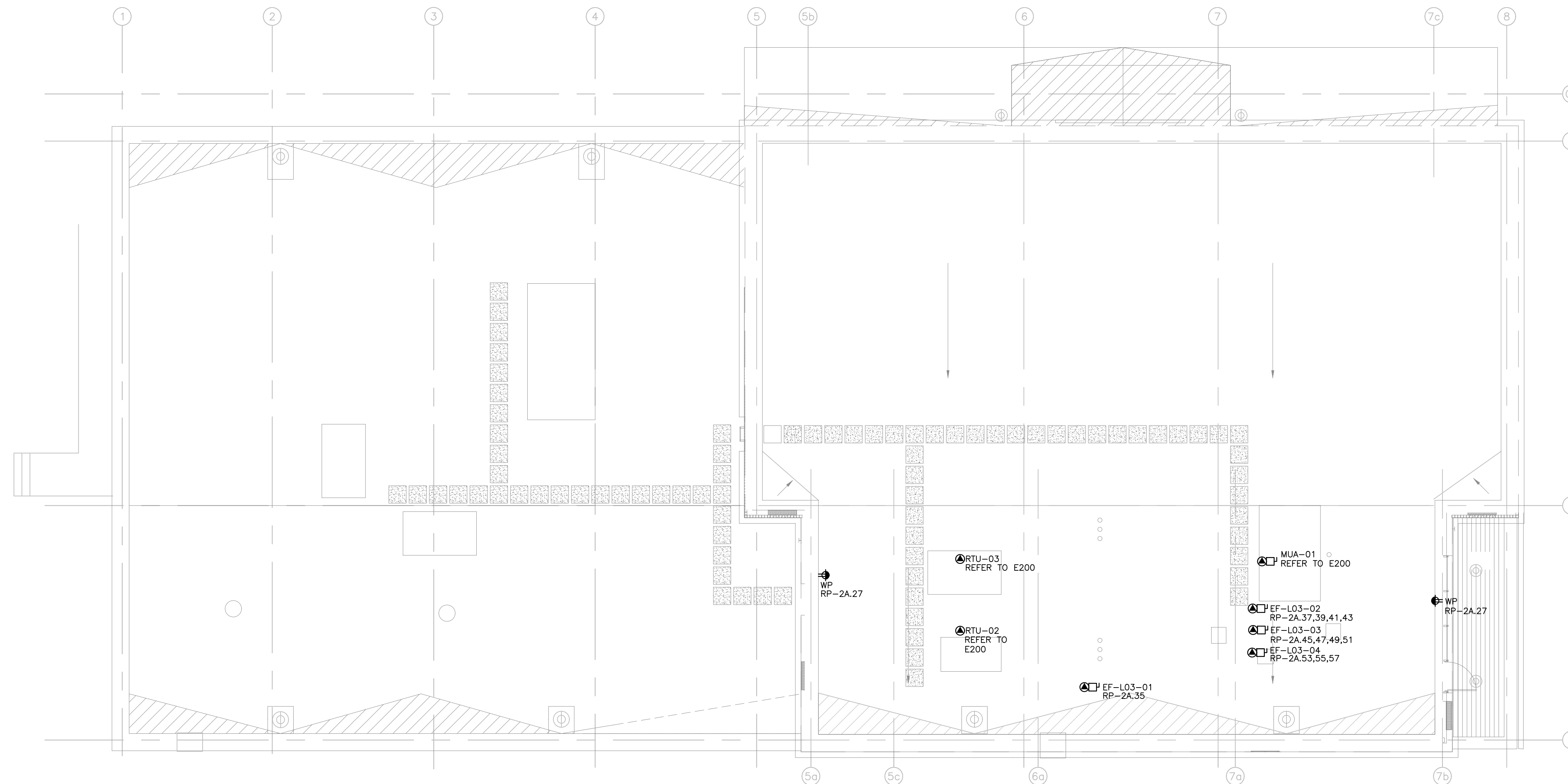
SCALE  
 1:100

DATE  
**JUNE 16, 2021**

PROJECT NUMBER  
**21376.000.e001**

DRAWING NUMBER

E301



Contractor must check and verify all dimensions on the job, and report any discrepancies to the Architect before proceeding with the work. Do not scale this drawing.

REVISIONS AND ISSUES

REV	DESCRIPTION	DATE	BY
1	ISSUED FOR COSTING	2021.08.17	
2	ISSUED FOR TENDER	2021.08.25	
3	ISSUED FOR BUILDING PERMIT	2021.09.09	
4	ISSUED FOR ADD-E01	2021.09.15	
5	ISSUED FOR REVISED TENDER/BUILDING PERMIT	2022.01.31	
6	ISSUED FOR CONSTRUCTION	2022.07.18	
7			
8			

**MJMA**

maclean jaunkains miller architects

425 adelaide street west level 6  
toronto ontario m5v 3c1  
416 593 6796  
www.mjmaarchitects.com

**TRITON ENGINEERING SERVICES LTD**

CIVIL ENGINEERS  
18 ROBB BOULEVARD - UNIT 8  
ORANGEVILLE, ONTARIO  
TEL 519 941 0330 FAX 519 941 1830

**BLACKWELL**

STRUCTURAL ENGINEERS  
134 PETER STREET, SUITE 1301  
TORONTO, ONTARIO, M5V 2H2  
TEL 416.593.5300 FAX 416.593.4840

**SMITH + ANDERSON**

MECHANICAL AND ELECTRICAL ENGINEERS  
1100 - 100 SHEPPARD AVENUE EAST  
TORONTO, ONTARIO, M2N 6N5  
TEL 416.487.8151



Smith + Anderson

1100 - 100 Sheppard Ave. East, Toronto On, M2N 6N5  
416 487 8151 f 416 487 8104 smithanderson.com

**SAYERS FOOD LIMITED**

132 BURLEIGH STREET  
t: 705.656.4531  
e: sayers@apsley.ca

NORTH ARROW

SEAL

PROJECT TITLE

NEW SAYERS FOOD STORE  
BURLEIGH STREET, APSLEY

DRAWING TITLE

ROOF - POWER AND  
SYSTEMS

SCALE

1:100

DATE

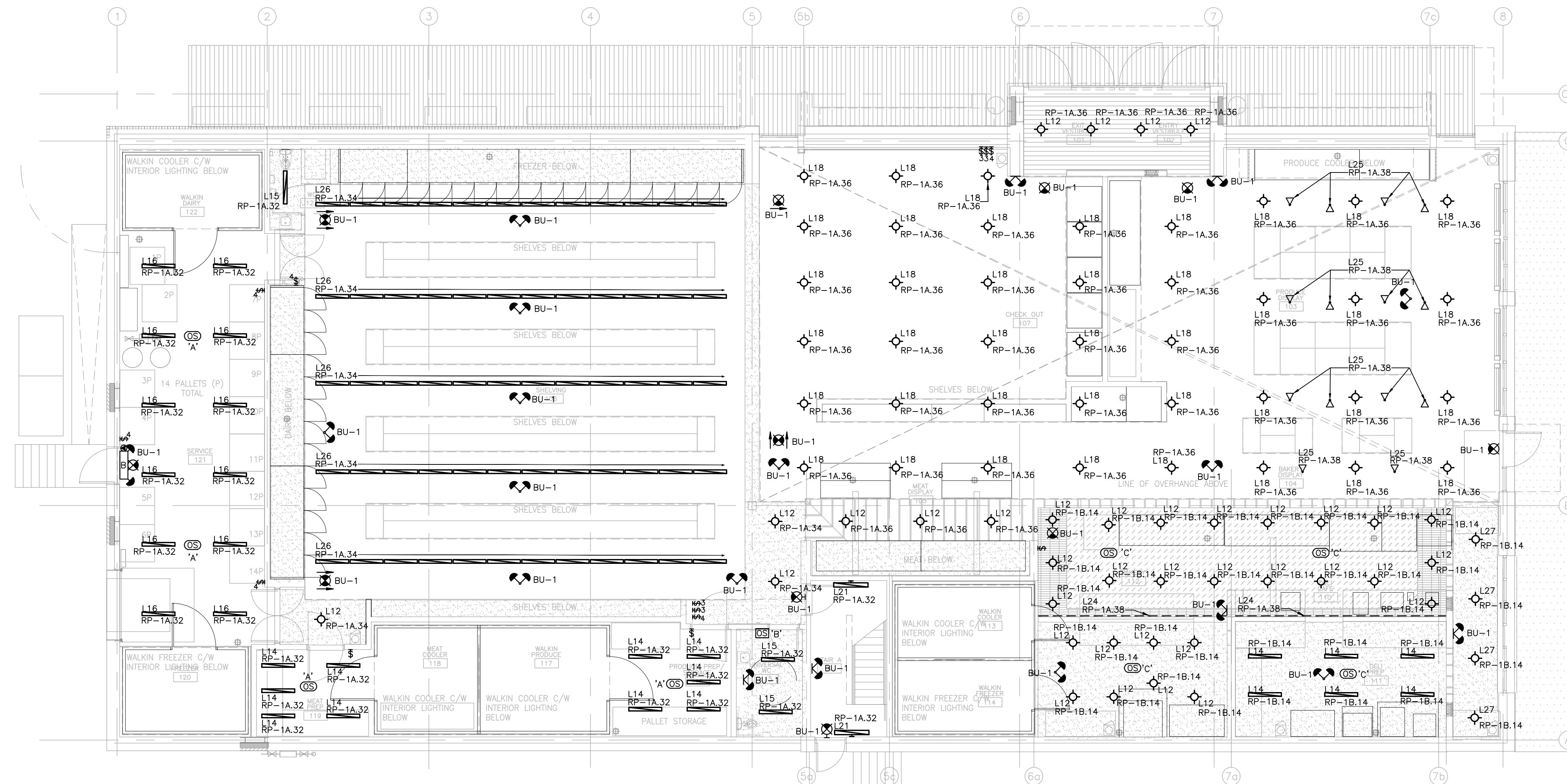
JUNE 16, 2021

PROJECT NUMBER

21376.000.e001

DRAWING NUMBER

E302



Contractor must check and verify all dimensions on the job, and report any discrepancies to the Architect before proceeding with the work. Do not scale this drawing.

REVISIONS AND ISSUES

REV	DESCRIPTION	DATE	BY
1	ISSUED FOR COSTING	2021.08.17	
2	ISSUED FOR TENDER	2021.08.27	
3	ISSUED FOR BUILDING PERMIT	2021.09.09	
4	ISSUED FOR ADD-E03	2021.09.27	
5	ISSUED FOR REVISED TENDER/BUILDING PERMIT	2022.01.31	
6	ISSUED FOR CONSTRUCTION	2022.07.18	
7			
8			

**MJMA**

maclean jaunkains miller architects  
 425 adelaide street west level 6  
 toronto ontario m5v 3c1  
 416 593 6796  
 www.mjmaarchitects.com

**TRITON ENGINEERING SERVICES LTD**

CIVIL ENGINEERS  
 18 ROBB BOULEVARD - UNIT 8  
 ORANGEVILLE, ONTARIO  
 TEL 519 941 0330 FAX 519 941 1830

**BLACKWELL**

STRUCTURAL ENGINEERS  
 134 PETER STREET, SUITE 1301  
 TORONTO, ONTARIO, M5V 2H2  
 TEL 416.593.5300 FAX 416.593.4840

**SMITH + ANDERSON**

MECHANICAL AND ELECTRICAL ENGINEERS  
 1100 - 100 SHEPPARD AVENUE EAST  
 TORONTO, ONTARIO, M2N 6N5  
 TEL 416.487.8151



Smith + Anderson

1100 - 100 Sheppard Ave. East, Toronto On, M2N 6N5  
 416 487 8151 f 416 487 8104 smithanderson.com

**SAYERS FOOD LIMITED**

132 BURLEIGH STREET  
 T: 705.656.4531  
 e: sayers@apsley.ca

NORTH ARROW

SEAL

PROJECT TITLE

NEW SAYERS FOOD STORE  
 BURLEIGH STREET, APSLEY

DRAWING TITLE

GROUND LEVEL - LIGHTING

SCALE

1:100

DATE

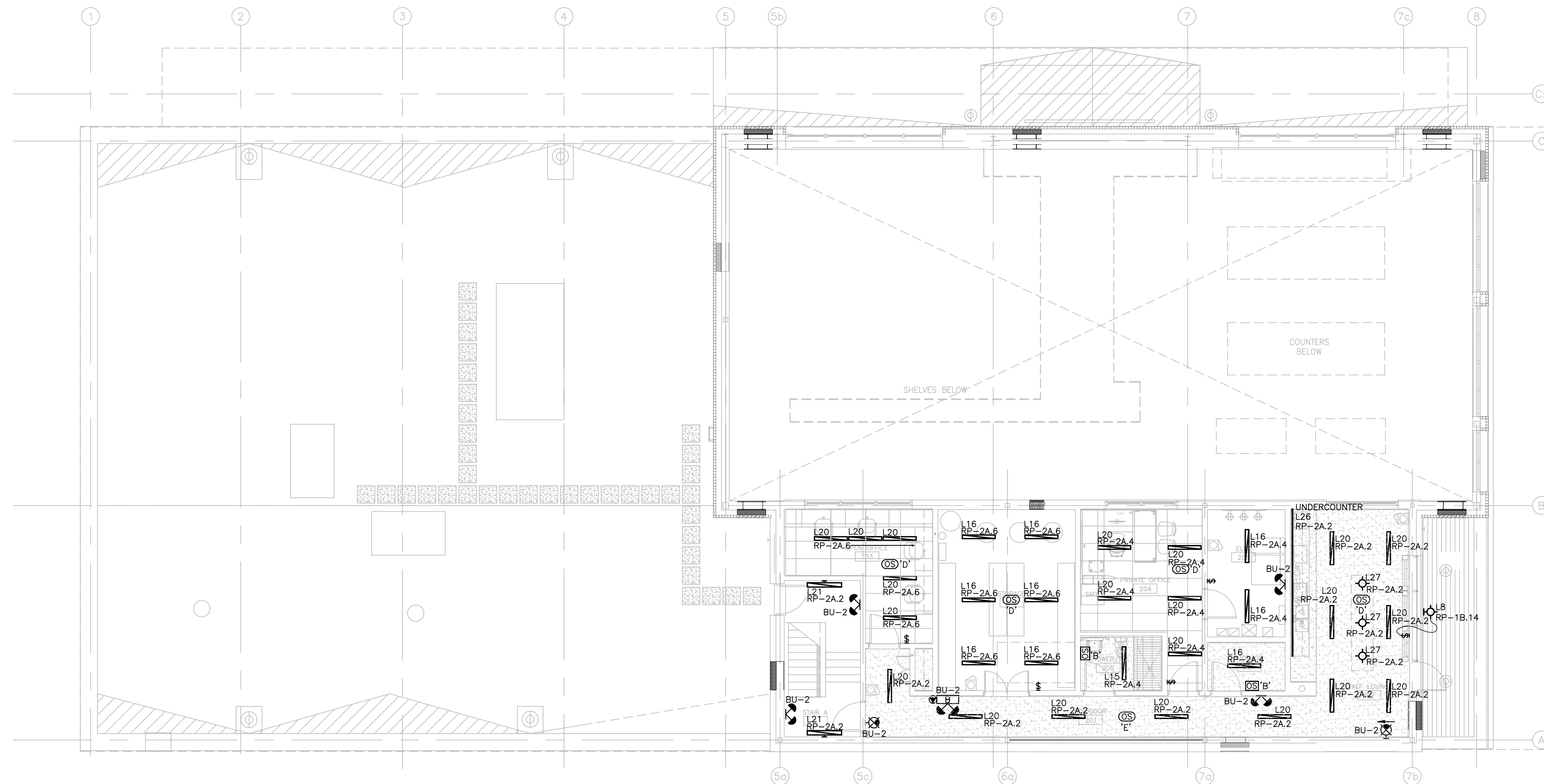
JUNE 16, 2021

PROJECT NUMBER

21376.000.e001

DRAWING NUMBER

E400



Contractor must check and verify all dimensions on the job, and report any discrepancies to the Architect before proceeding with the work. Do not scale this drawing.

REVISIONS AND ISSUES

REV	DESCRIPTION	DATE	BY
1	ISSUED FOR COSTING	2021.08.17	
2	ISSUED FOR TENDER	2021.08.27	
3	ISSUED FOR BUILDING PERMIT	2021.09.09	
4	ISSUED FOR ADD-E03	2021.09.27	
5	ISSUED FOR REVISED TENDER/BUILDING PERMIT	2022.01.31	
6	ISSUED FOR CONSTRUCTION	2022.07.18	
7			
8			

**MJMA**

maclean jaunkains miller architects

425 adelaide street west level 6  
toronto ontario m5v 3c1  
416 593 6796  
www.mjmaarchitects.com

**TRITON ENGINEERING SERVICES LTD**

CIVIL ENGINEERS  
18 ROBB BOULEVARD - UNIT 8  
ORANGEVILLE, ONTARIO  
TEL 519 941 0330 FAX 519 941 1830

**BLACKWELL**

STRUCTURAL ENGINEERS  
134 PETER STREET, SUITE 1301  
TORONTO, ONTARIO, M5V 2H2  
TEL 416.593.5300 FAX 416.593.4840

**SMITH + ANDERSON**

MECHANICAL AND ELECTRICAL ENGINEERS  
1100 - 100 SHEPPARD AVENUE EAST  
TORONTO, ONTARIO, M2N 6N5  
TEL 416.487.8151



Smith + Anderson

1100 - 100 Sheppard Ave. East, Toronto On, M2N 6N5  
416 487 8151 f 416 487 8104 smithanderson.com

**SAYERS FOOD LIMITED**

132 BURLEIGH STREET  
t: 705.656.4531  
e: sayers@apsley.ca

NORTH ARROW

SEAL

PROJECT TITLE

NEW SAYERS FOOD STORE  
BURLEIGH STREET, APSLEY

DRAWING TITLE

SECOND LEVEL - LIGHTING

SCALE

1:100

DATE

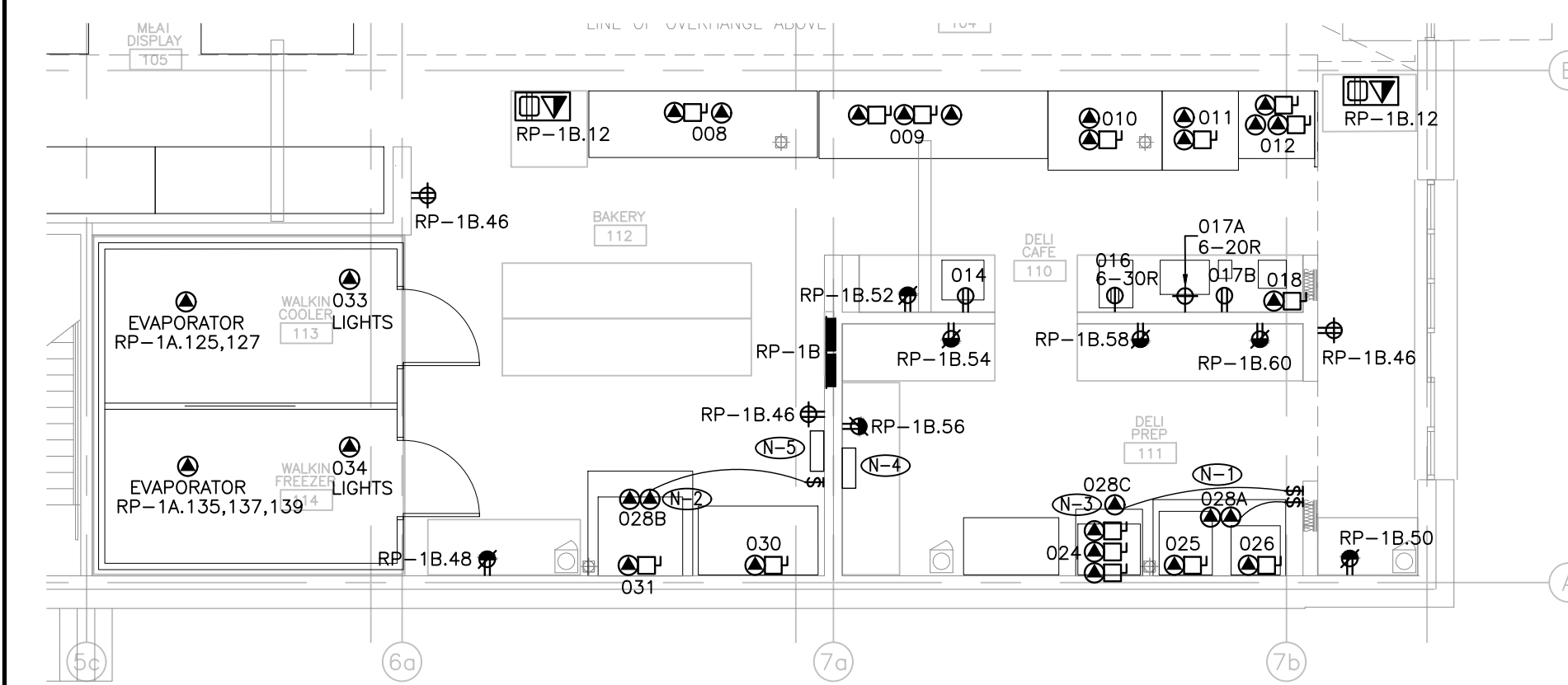
JUNE 16, 2021

PROJECT NUMBER

21376.000.e001

DRAWING NUMBER

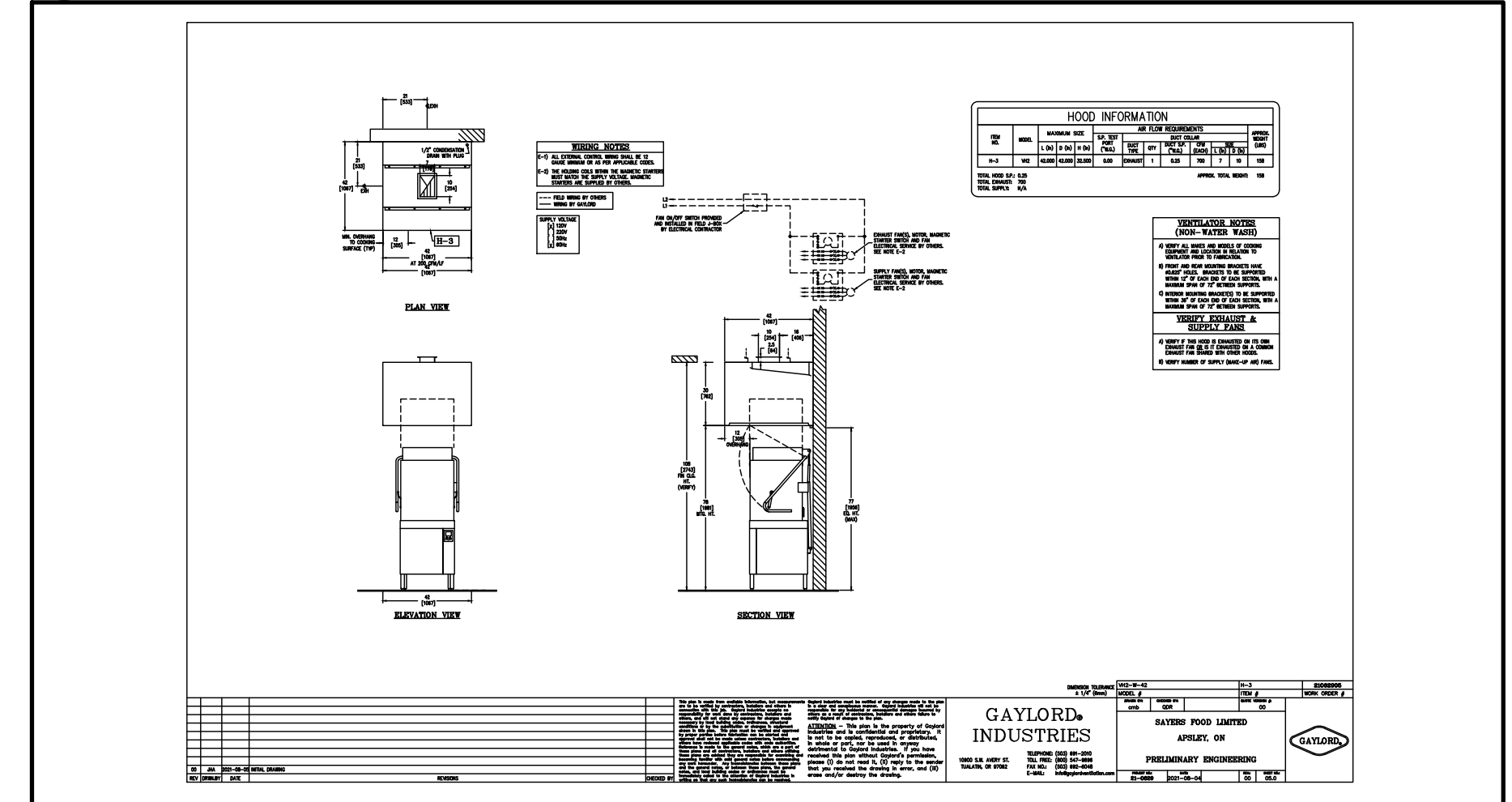
E401



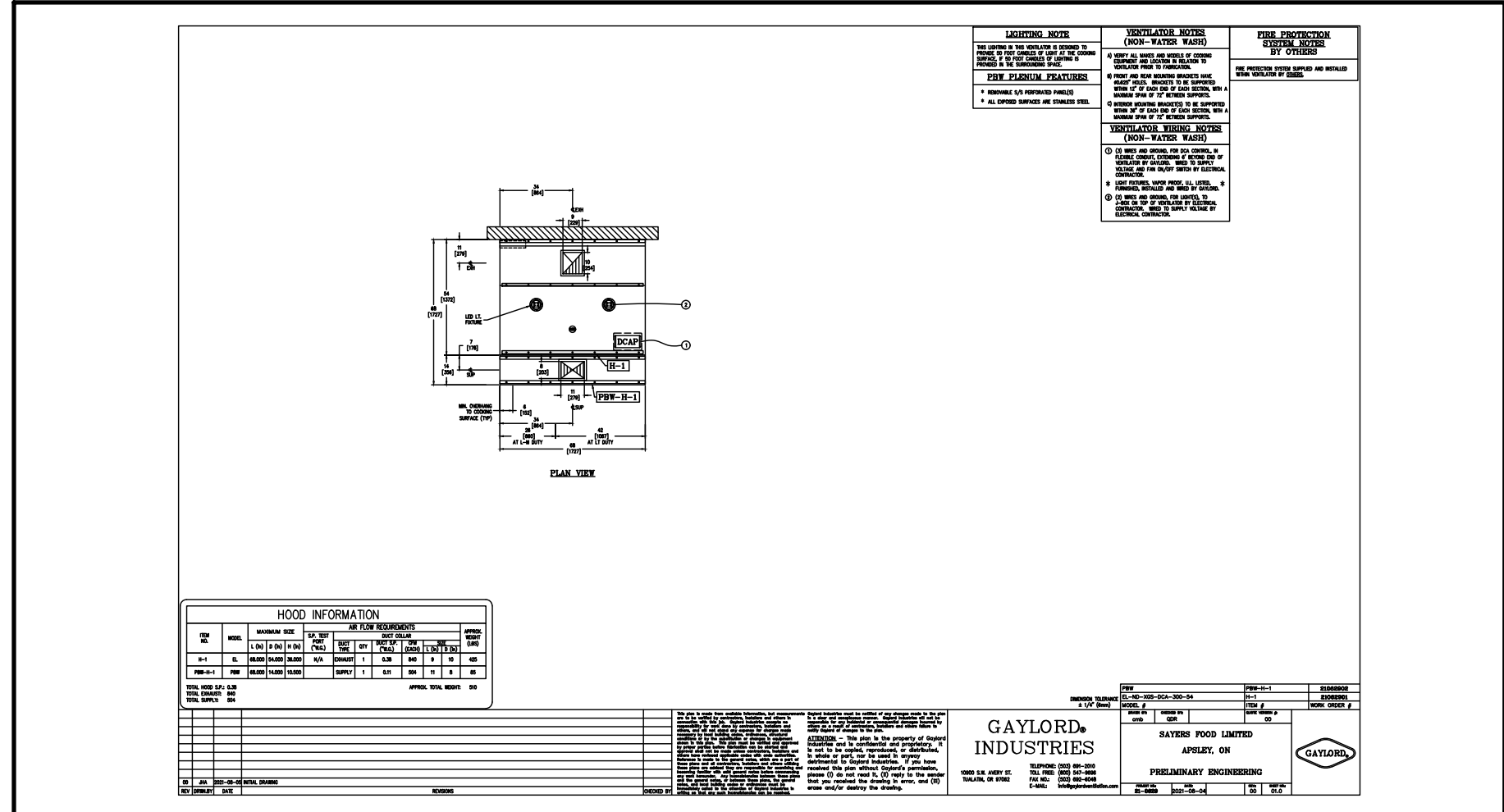
- DRAWING NOTES:**
- 1- REFER TO E500/2 FOR COMBI+FRYER EXHAUST HOOD DETAILS. ELECTRICAL CONTRACTOR TO CONNECT DCA CONTROL TO POWER SUPPLY AND FAN ON/OFF SWITCH, PROVIDE WIRES AND GROUND FOR LIGHT(S) TO JUNCTION BOX ON TOP OF VENTILATOR, CONNECT JUNCTION BOX TO POWER SUPPLY, AS INDICATED IN E500/2.
  - 2- REFER TO E500/3 FOR OVEN EXHAUST HOOD DETAILS. ELECTRICAL CONTRACTOR TO CONNECT DCA CONTROL TO POWER SUPPLY AND FAN ON/OFF SWITCH, PROVIDE WIRES AND GROUND FOR LIGHT(S) TO JUNCTION BOX ON TOP OF VENTILATOR, CONNECT JUNCTION BOX TO POWER SUPPLY, AS INDICATED IN E500/3.
  - 3- REFER TO E500/4 FOR DISHWASHER EXHAUST HOOD DETAILS. ELECTRICAL CONTRACTOR TO PROVIDE FAN ON/OFF SWITCH AND CONNECTIONS, AS INDICATED IN E500/4.
  - 4- FIRE SUPPRESSION CONTROL PANEL FOR KITCHEN EXHAUST HOOD 028A. PROVIDE WIRE AND CONDUIT FROM CONTROL PANEL DRY CONTACTS TO TWO (2) SHUNT TRIP BREAKERS (MUA-01 AND EF-L03-02).
  - 5- FIRE SUPPRESSION CONTROL PANEL FOR KITCHEN EXHAUST HOOD 028B. PROVIDE WIRE AND CONDUIT FROM CONTROL PANEL DRY CONTACTS TO TWO (2) SHUNT TRIP BREAKERS (MUA-01 AND EF-L03-03).

EQUIPMENT SCHEDULE													
LEVEL 1 - DELI & BAKERY													
ITEM NO.	QTY	LOCATION	DESCRIPTION	PANEL	CIRCUIT NUMBER	CONNECTION TYPE	VOLTAGE (V)	CYCL (HZ)	PHASE	AMPS (A)	HP	ELECTRICAL REMARKS	
008	1	110 - DELI CAFE	12' DELI SELF SERVE	RP-1B	1	DC	120	60	1	0.57			
			LIGHTS	RP-1B	2	DC	120	60	1	0.75			
			FANS	RP-1B	3	DC	120	60	1	1.2	117.6	1.23	
009	1	110 - DELI CAFE	MEAT & CHEESE	RP-1B	3	DC	120	60	1	1.5			
			LIGHTS	RP-1B	4	DC	120	60	1				
			SCALES	RP-1B	5	DC	120	60	1				
010	1	110 - DELI CAFE	SUB SERV	RP-1B	7	DC	120	60	1	0.48	42	15	
			LIGHTS	RP-1B	2	DC	120	60	1	0.36			
011	1	110 - DELI CAFE	HOT SRVC	RP-1B	9	DC	120	60	1	3.49	1127	15	
			LIGHTS	RP-1B	2	DC	120	60	1	0.24			
			FANS & HOT PLATE	RP-1B	11	DC	120	60	1	10.8	1291.6	15	
012	1	110 - DELI CAFE	HOT SS	RP-1B	2	DC	120	60	1	0.2			
			LIGHTS	RP-1B	13	DC	120	60	1				
			SCALES	RP-1B	13	DC	120	60	1				
014	2	110 - DELI CAFE	MEAT SLICER	RP-1B	15	NEMA 5-15R	120	60	1	5.6	1/2	672	15
												ONE (1) MEAT SLICER WILL BE MOBILE	
016	1	110 - DELI CAFE	TURBO CHEF	RP-1B	17,19	NEMA 6-30R	208	60	1		5990	30	
017A	1	110 - DELI CAFE	ESPRESSO MACHINE	RP-1B	21,23	NEMA 6-20R	208	60	1	16	3300	20	
017B	1	110 - DELI CAFE	COFFEE GRINDER	RP-1B	25	NEMA 5-15R	120	60	1	5	575	15	
018	1	110 - DELI CAFE	COFFEE MAKER	RP-1B	27	DC	120	60	1	12.5	1475	15	
			EL - WASH PUMP MOTOR & DUMP HEATER	RP-1B	28,31,33	DC	208	60	3	36.9		30	
			EL - ELECTRIC BOOSTER & LEADNINGS	RP-1B	35,37,39	DC	208	60	3	26.8		30	
024	1	111 - DELI PREP.	DISHWASHER	RP-1B	43,43,45	DC	208	60	3	33.7		60	
			EL - HOTWATER & RINSE AGENT FEEDERS	RP-1B	47,49,51	DC	208	60	3		18900	60	
025	1	111 - DELI PREP.	COMBI	RP-1B	53	DC	120	60	1	6	1/3	15	
026	1	111 - DELI PREP.	FRYER	RP-1B	53	DC	120	60	1	6	1/3	15	
028A	1	111 - DELI PREP.	EXHAUST HOOD (COMBI & FRYER)	RP-1B	4	DC	120	60	1	2		15	
			LIGHTS	RP-1B	6	DC	120	60	1	2		15	
			DCA CONTROL									REFER TO E500	
			FIRE SUPPRESSION									REFER TO E500	
028B	1	111 - DELI PREP.	EXHAUST HOOD (OVEN)	RP-1B	6	DC	120	60	1	2		15	
			DCA CONTROL									REFER TO E500	
			FIRE SUPPRESSION									REFER TO E500	
030C	1	111 - DELI PREP.	EXHAUST HOOD (DISHWASHER)	RP-1B	55,57,59	DC	208	60	3	21	4400	30	
030	1	112 - BAKERY	PROOFER	RP-1B	55,57,59	DC	208	60	3	21	4400	30	
031	1	112 - BAKERY	OVEN	SWBD-1A	REFER TO E500	DC	208	60	1	130	27000	175	
033	1	113 - WALKIN COOLER	COOLER	RP-1B	61	DC	120	60	1			15	
033	1	113 - WALKIN COOLER	LIGHTS	RP-1B	8	DC	120	60	1			15	
034	1	114 - WALKIN FREEZER	FREEZER	RP-1B	63	DC	208	60	1			15	
034	1	114 - WALKIN FREEZER	LIGHTS	RP-1B	10	DC	120	60	1			15	

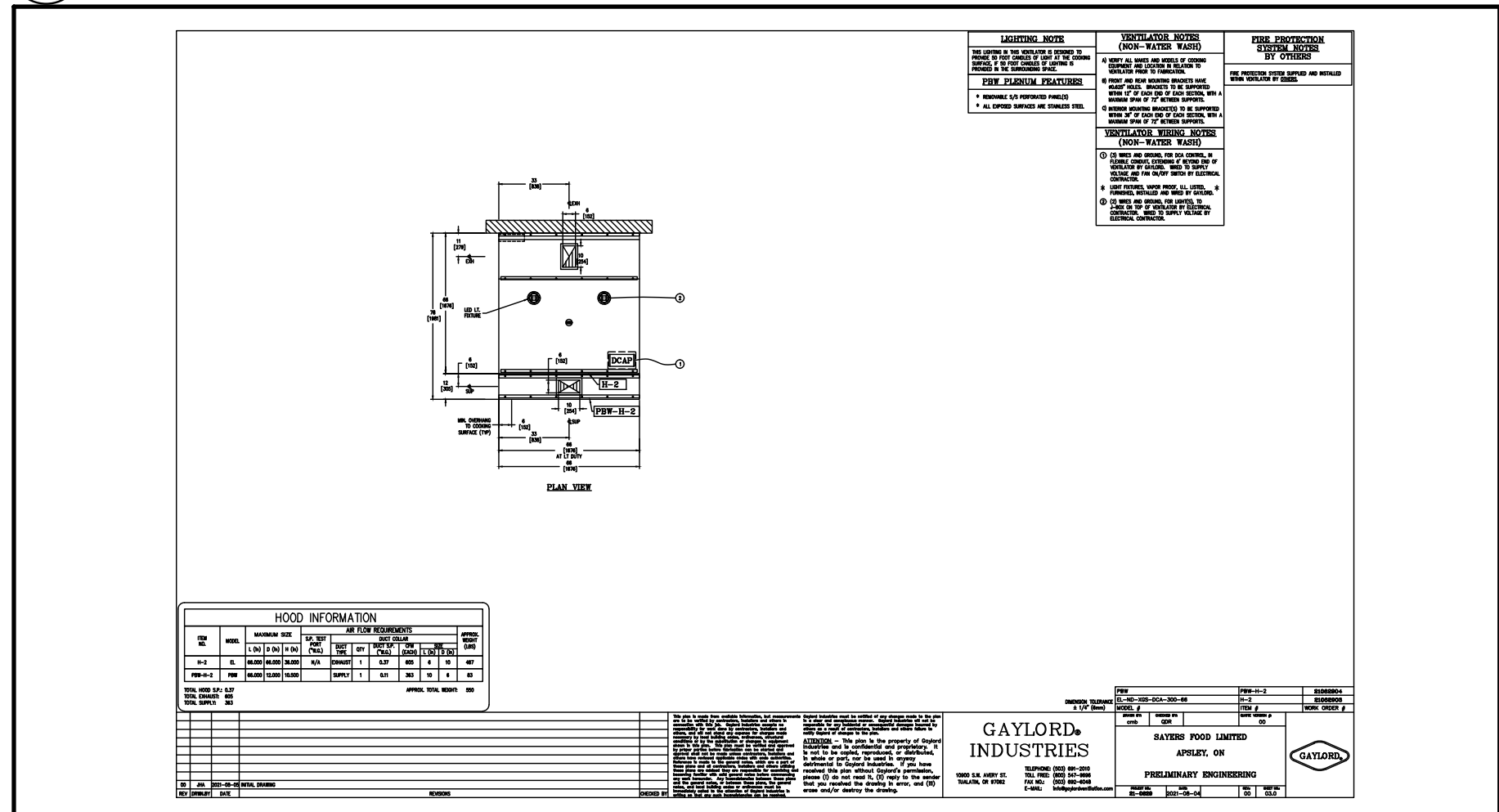
1 BAKERY & DELI CAFE/PREP



4 DISHWASHER EXHAUST HOOD



2 COMBI+FRYER EXHAUST HOOD



3 OVEN EXHAUST HOOD

Contractor must check and verify all dimensions on the job, and report any discrepancies to the Architect before proceeding with the work. Do not scale this drawing.

REVISIONS AND ISSUES			
REV	DESCRIPTION	DATE	BY
1	ISSUED FOR COSTING	2021.08.17	
2	ISSUED FOR TENDER	2021.08.27	
3	ISSUED FOR BUILDING PERMIT	2021.09.09	
4	ISSUED FOR ADD-E01	2021.09.15	
5	ISSUED FOR ADD-E03	2021.09.27	
6	ISSUED FOR REVISED TENDER/BUILDING PERMIT	2022.01.31	
7	ISSUED FOR CONSTRUCTION	2022.07.18	
8			

**MJMA**  
 maclean jaunkains miller architects  
 425 adelade street west level 6  
 toronto ontario m5v 3c1  
 416 593 6796  
 www.mjmaarchitects.com

**TRITON ENGINEERING SERVICES LTD**  
 CIVIL ENGINEERS  
 18 ROBB BOULEVARD - UNIT 8  
 ORANGEVILLE, ONTARIO  
 TEL 519 941 0330 FAX 519 941 1830

**BLACKWELL**  
 STRUCTURAL ENGINEERS  
 134 PETER STREET, SUITE 1301  
 TORONTO, ONTARIO, M5V 2H2  
 TEL 416-593-5300 FAX 416-593-4840

**SMITH + ANDERSON**  
 MECHANICAL AND ELECTRICAL ENGINEERS  
 1100 - 100 SHEPPARD AVENUE EAST  
 TORONTO, ONTARIO, M2N 6N5  
 TEL 416-487-8151

**Smith + Anderson**  
 1100 - 100 Sheppard Ave. East, Toronto On, M2N 6N5  
 416-487-8151 | 416-487-9154 | smith@smithanderson.com

**SAYERS FOOD LIMITED**  
 132 BURLEIGH STREET  
 T. 705.656.4531  
 e: sayers@apsley.ca

NORTH ARROW SEAL

PROJECT TITLE  
**NEW SAYERS FOOD STORE  
 BURLEIGH STREET, APSLEY**

DRAWING TITLE  
**ENLARGED PLANS**

SCALE  
 1:100  
 DATE  
**JUNE 16, 2021**

PROJECT NUMBER  
**21376.000.e001**  
 DRAWING NUMBER

E500