

1 SITE LAYOUT PLAN
E1 SCALE: 1:250

- NOTES:**
1. COORDINATE MOUNTING HEIGHTS OF TYPE 'K', AND 'L' LIGHT FIXTURES WITH ARCHITECTURAL DRAWINGS.
 2. 15 PHOTOCELL MOUNTED ON NORTH-EAST SIDE OF BUILDING, HIGH ON THE WALL, WHERE PRACTICAL.
 3. SEE DRAWING E4 FOR CANDY LIGHTING WIRING.
 4. BUILDING MOUNTED PHOTOCELL MOUNTED ON NORTH-EAST SIDE OF BUILDING, HIGH ON THE WALL, WHERE PRACTICAL.

LIGHTING LEGEND	
	SURFACE MOUNTED LED CANDY LIGHT. SEE DRAWING E4 FOR DETAILS.
	WALL MOUNTED LIGHTS. SEE DRAWING E4 FOR DETAILS. REFER TO ARCHITECTURAL DRAWINGS FOR MOUNTING HEIGHTS.
	BUILDING MOUNTED PHOTOCELL

0	22/05/02	ISSUED FOR PERMIT & TENDER	PGB	-
Rev.	Date	Description	By	App.

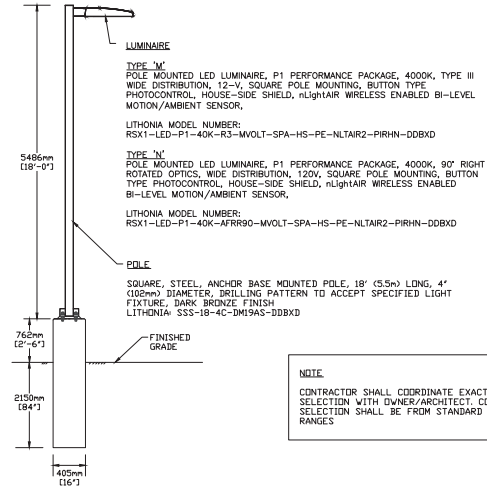
BERTHELOT ENGINEERING LTD
 2193 Lynhaven Rd., Peterborough, ON, K9K 1W8
 Tel: (705) 775-1517

	DWN.	T. ST. JEAN
	CHK.	P. BERTHELOT
	P.G.P. BERTHELOT	May 27/02
	DSN.	PGB/TMS
	SCALE:	AS NOTED

PROJECT
NEW FIRE STATION No. 1
 988 County Road 10
 Millbrook, Ontario

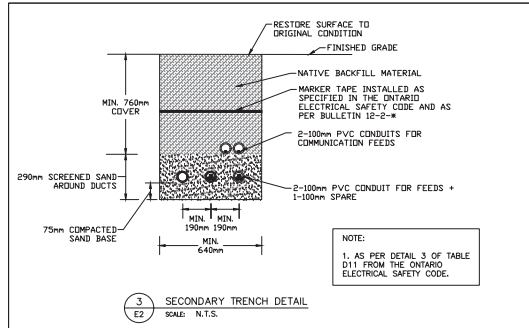
TITLE
SITE POWER LAYOUT PLAN

FILE No. 473 DWG. No. **E1**

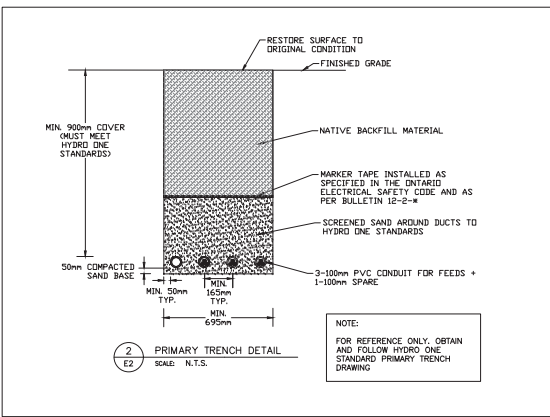
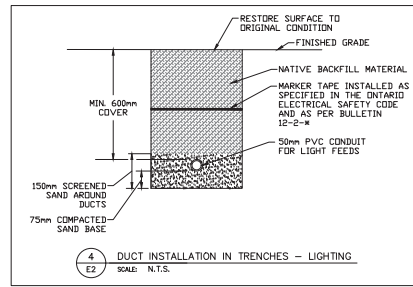


NOTE:
CONTRACTOR SHALL COORDINATE EXACT COLOUR SELECTION WITH OWNER/ARCHITECT. COLOUR SELECTION SHALL BE FROM STANDARD COLOUR RANGES

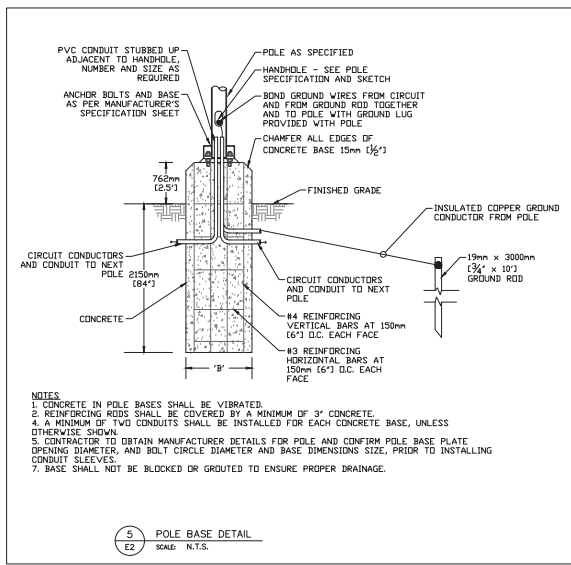
1
E2
LUMINAIRE TYPES 'M' & 'N' ASSEMBLY
SCALE: N.T.S.



NOTE:
1. AS PER DETAIL 3 OF TABLE D11 FROM THE ONTARIO ELECTRICAL SAFETY CODE.



NOTE:
FOR REFERENCE ONLY, OBTAIN AND FOLLOW HYDRO ONE STANDARD PRIMARY TRENCH DRAWING



NOTES:
1. CONCRETE IN POLE BASES SHALL BE VIBRATED.
2. REINFORCING RODS SHALL BE COVERED BY A MINIMUM OF 3" CONCRETE.
4. A MINIMUM OF TWO CONDUITS SHALL BE INSTALLED FOR EACH CONCRETE BASE, UNLESS OTHERWISE SHOWN.
5. CONTRACTOR TO OBTAIN MANUFACTURER DETAILS FOR POLE AND CONFIRM POLE BASE PLATE OPENING DIAMETER, AND BOLT CIRCLE DIAMETER AND BASE DIMENSIONS SIZE, PRIOR TO INSTALLING CONDUIT SLEEVES.
7. BASE SHALL NOT BE BLOCKED OR GRouted TO ENSURE PROPER DRAINAGE.

0	22/05/02	ISSUED FOR PERMIT & TENDER	PGB	-
---	----------	----------------------------	-----	---

Rev.	Date	Description	By	App.
------	------	-------------	----	------

BERTHELOT ENGINEERING LTD
2193 Lynhaven Rd., Peterborough, ON. K9K 1W8
Tel: (705) 775-1517

PROFESSIONAL ENGINEER
P.G.P. BERTHELOT
May 2/22
PROVINCE OF ONTARIO

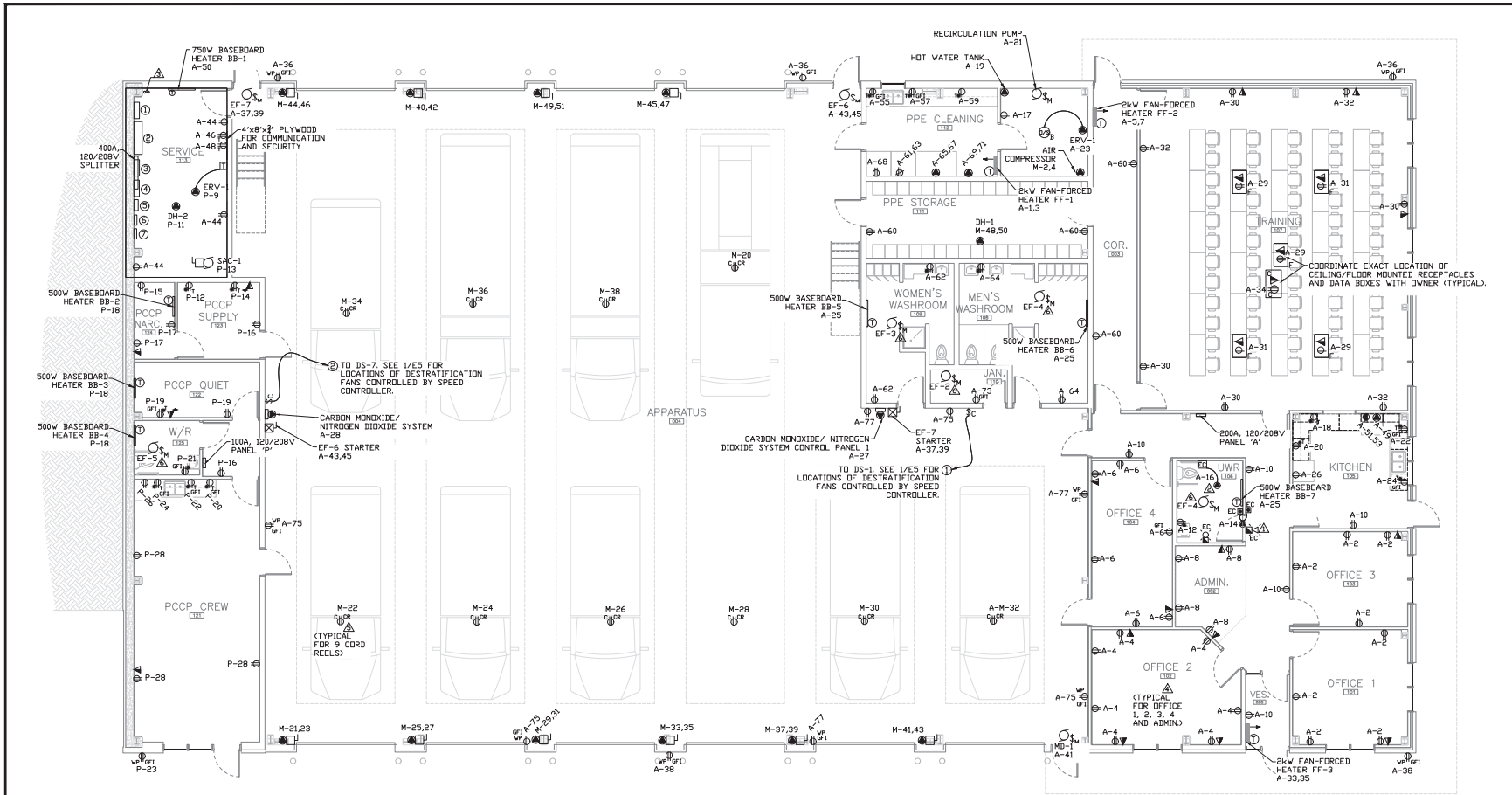
PERSONAL INFORMATION
ELECTRICAL BCIN 23396

DWN. T. ST. JEAN
CHK. P. BERTHELOT
DSN. PGB/TMS
SCALE: AS NOTED

PROJECT
NEW FIRE STATION No. 1
988 County Road 10
Millbrook, Ontario

TITLE
SITE LIGHTING DETAILS

FILE No. 473
DWG. No. **E2**



1 MAIN FLOOR POWER LAYOUT PLAN
SCALE: 1:75

POWER LEGEND	
▽	DATA/PHONE OUTLET
⊕	DIRECT CONNECTION
⊖	MOTOR RATED SWITCH
⊙	SINGLE PHASE MOTOR
⊚	THREE PHASE MOTOR
⊘	DISCONNECT SWITCH
⊚	MOTOR STARTER
⊚	24H. 7-DAY TIMER
⊚	AUTOMATIC DOOR PUSHBUTTONS
⊚	LOCK BUTTON
⊚	SPEED CONTROLLER SWITCH
⊚	MASTER GARAGE DOOR OPENER SWITCH
⊚	ELECTRICAL PANEL
⊚	DESTRATIFICATION FAN

RECEPTACLE LEGEND	
⊕	RECEPTACLE
⊕	240V RECEPTACLE
⊕	WEATHERPROOF
T	20A T-SLOT
C	CEILING MOUNTED
F	FLOOR MOUNTED
CR	RETRACTABLE CORD REEL
GF1	GROUND FAULT INTERRUPTED
*	MOUNTED ABOVE COUNTER

Rev.	Date	Description	By	App.
0	22/05/02	ISSUED FOR PERMIT & TENDER	POB	-

BERTHELOT ENGINEERING LTD
 2193 Lynhaven Rd., Tel: (705) 775-1517
 Peterborough, ON.
 K9K 1W8

BERTHELOT ENGINEERING LTD
 P.G.P. BERTHELOT
 May 2/22
 PROFESSIONAL ENGINEER
 ELECTRICAL BCIN 233986

PROJECT: **NEW FIRE STATION No. 1**
 988 County Road 10
 Millbrook, Ontario

TITLE: **MAIN FLOOR POWER LAYOUT PLAN**

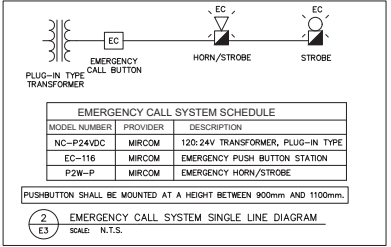
FILE No. 473 DWG. No. **E3**

SERVICE ROOM EQUIPMENT LAYOUT LIST	
①	400A, 120/208V SERVICE ENTRANCE RATED DISCONNECT SWITCH
②	4'x4' METER CABINET
③	400A, 120/208V DISCONNECT SWITCH
④	400A, 120/208V SERVICE ENTRANCE RATED DISCONNECT SWITCH FOR FUTURE SOLAR
⑤	400A, 120/208V AUTOMATIC TRANSFER SWITCH
⑥	400A, 120/208V DISTRIBUTION PANEL 'DP'

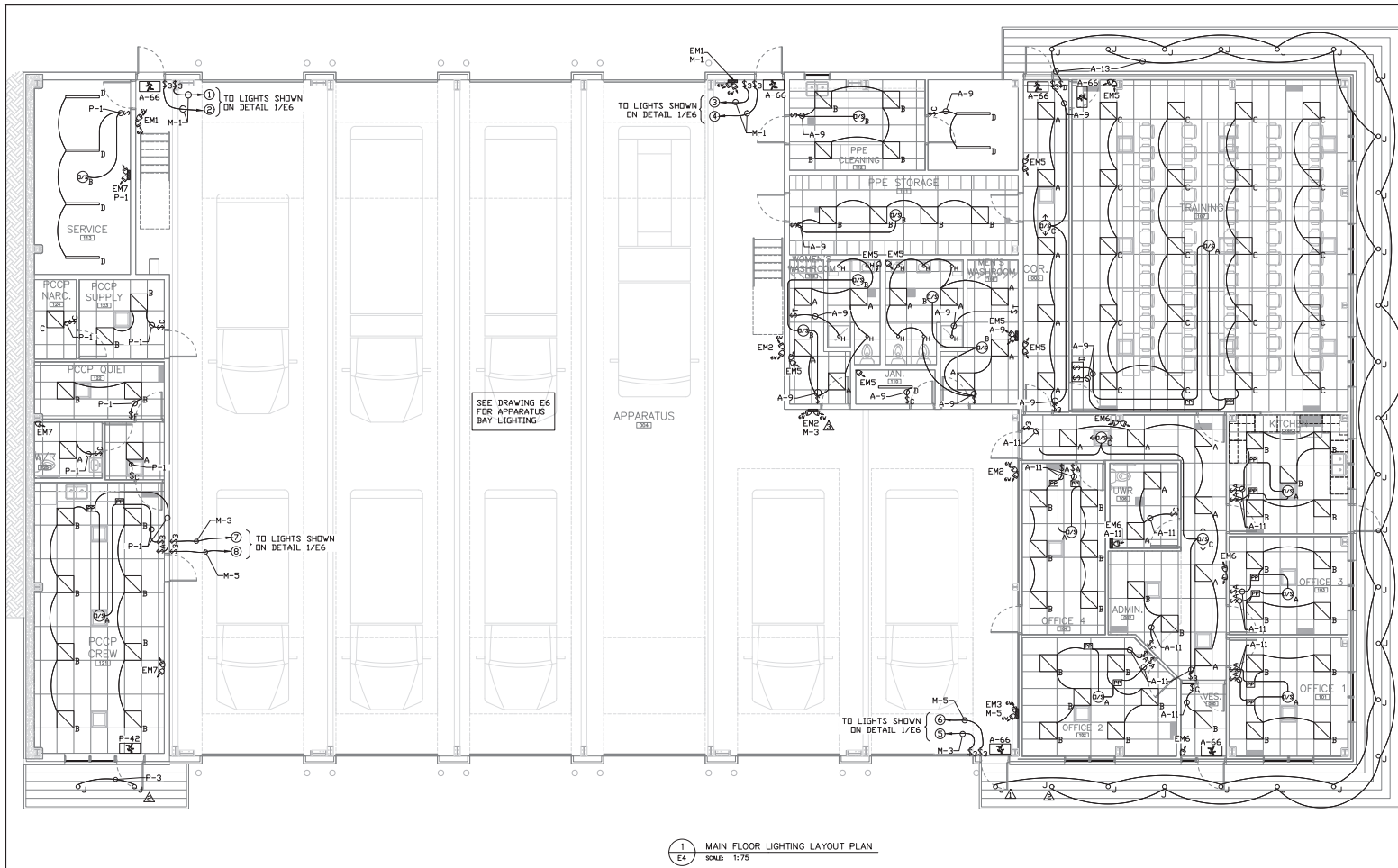
VEHICLE BAY CORD REEL			
SYMBOL	MODEL No.	MANUFACTURER	DESCRIPTION
CR	L4545 123 3A	REELCRAFT	PROVIDE RECEPTACLE ON RETRACTABLE CORD REEL FOR POWER FOR DIESEL ENGINE BLOCK HEATER. RECEPTACLE SHALL BE 20A, 120V, ON SPRING DRIVEN CORD REEL, C/W 3/16 (50) OF #12-3 COPPER CABLE RATED 90C, AND BALL STOP

NOTES:

- EMERGENCY CALL SYSTEM VISUAL AND AUDIBLE ALARM OVER DOOR. SEE DETAIL 2 ON DRAWING E1 FOR EMERGENCY CALL SYSTEM SINGLE LINE DIAGRAM.
- EMERGENCY CALL SYSTEM TRANSFORMER
- SUPPLY AND INSTALL 2-3" EMPTY CONDUITS FROM SERVICE ROOM TO ROOF FOR FUTURE SOLAR SYSTEM AND 2-3" CONDUITS TO MAIN SERVICE AREA.
- COORDINATE EXACT LOCATIONS OF RECEPTABLES AND DATA BOXES WITH FURNITURE LAYOUTS IN ARCHITECTURAL DRAWINGS.
- EXACT LOCATION OF CORD DROP SHALL BE COORDINATED WITH OWNER DURING CONSTRUCTION.
- EXHAUST FANS EF-1, EF-2, EF-3, EF-4, & EF-5 ARE CONTROLLED BY ROOM LIGHT SWITCH.



ELECTRIC HEATING EQUIPMENT SCHEDULE			
SYMBOL	MODEL NUMBER	MANUFACTURER	DESCRIPTION
FF-4	0A0C1502-T	OUELLET OR APPROVED EQUAL	1.5kW COMMERCIAL FAN-FORCED HEATER, WHITE, 120V, C/W INTEGRAL TAMPERPROOF THERMOSTAT, RECESSED
FF-1/FF-3	0A0C2000-T	OUELLET OR APPROVED EQUAL	2kW COMMERCIAL FAN-FORCED HEATER, WHITE, 208V, C/W INTEGRAL TAMPERPROOF THERMOSTAT, RECESSED
FF-2	0A0C2000-T C/W KIT-OAC-B51	OUELLET OR APPROVED EQUAL	2kW COMMERCIAL FAN-FORCED HEATER, WHITE, 208V, C/W INTEGRAL TAMPERPROOF THERMOSTAT, COMPLETE WITH SURFACE MOUNTING BOX
BB-5	08R0502	OUELLET OR APPROVED EQUAL	500W BASEBOARD HEATER, WHITE, 120V, C/W INTEGRAL THERMOSTAT
BB-4	C/W KIT-OOB-TB6	OUELLET OR APPROVED EQUAL	500W BASEBOARD HEATER, WHITE, 120V, C/W INTEGRAL THERMOSTAT
BB-2	08R0752	OUELLET OR APPROVED EQUAL	750W BASEBOARD HEATER, WHITE, 120V, C/W INTEGRAL THERMOSTAT
BB-3	C/W KIT-OOB-TB6	OUELLET OR APPROVED EQUAL	750W BASEBOARD HEATER, WHITE, 120V, C/W INTEGRAL THERMOSTAT
UH-B	0A0E2000A-ED-1B6	OUELLET OR APPROVED EQUAL	1.5kW UNIT HEATER, 208V, C/W INTEGRAL THERMOSTAT, CEILING OR WALL MOUNTED



- NOTES:
- ⚠️ CANOPY LIGHTING IS CONNECTED TO AND CONTROLLED BY A DIMMING LIGHT SWITCH AND BUILDING MOUNTED PHOTOCCELL.
 - ⚠️ CANOPY LIGHTING IS CONNECTED TO AND CONTROLLED BY BUILDING MOUNTED PHOTOCCELL.
 - ⚠️ EMERGENCY LIGHTS IN APPARATUS BAY SHALL BE MOUNTED AT 9' AFF.

LIGHTING LEGEND	
\$	TOGGLE SWITCH
\$3	3-WAY TOGGLE SWITCH

EMERGENCY LIGHTING & EXIT SCHEDULE			
SYMBOL	MODEL No.	MANUFACTURER	DESCRIPTION
EM1	12ESLxx/xxx	EMERGLITE OR APPROVED EQUAL	EMERGENCY LIGHTING UNIT, BATTERY CAPACITY AS LISTED IN TABLE ON THIS DRAWING, 12VDC, 10 YEAR BATTERY, C/W MR16 LED HEADS AS LISTED AND MOUNTING SHELF
EM2	EF90M-LJ	EMERGLITE OR APPROVED EQUAL	DUAL REMOTE HEAD, 12VDC, 5W, MR16 LED
EM3	EF9M-LJ	EMERGLITE OR APPROVED EQUAL	SINGLE REMOTE HEAD, 12VDC, 5W, MR16 LED
EM4	EF90M-LJ	EMERGLITE OR APPROVED EQUAL	DUAL REMOTE HEAD, 12VDC, 6W, MR16 LED
EM5	EF9M-LJ	EMERGLITE OR APPROVED EQUAL	SINGLE REMOTE HEAD, 12VDC, 6W, MR16 LED
EA1	EA1WIND	EMERGLITE OR APPROVED EQUAL	SELF POWERED RUNNING EXIT SIGN, SINGLE FACE, WALL OR CEILING MOUNT AS INDICATED, ARROWS AS INDICATED, LED LAMPS FOR 120VAC, CSA-C860-96 LISTED & CERTIFIED
EA2	EA2WIND	EMERGLITE OR APPROVED EQUAL	SELF POWERED RUNNING EXIT SIGN, DOUBLE FACE, WALL OR CEILING MOUNT AS INDICATED, ARROWS AS INDICATED, LED LAMPS FOR 120VAC, CSA-C860-96 LISTED & CERTIFIED

EMERGENCY LIGHTING BATTERY PACKS				
PACK	SIZE	CIRCUIT	# OF 5W HEADS	# OF 6W HEADS
EM1	72W	M-1	-	2
EM2	72W	M-3	-	2
EM3	36W	M-5	-	2
EM4	36W	P-3	1	-
EM5	100W	A-9	1	-
EM6	72W	A-11	1	-
EM7	36W	P-1	2	-

Rev.	Date	Description	By	App.
0	22/05/02	ISSUED FOR PERMIT & TENDER	POB	-

BERTHELOT ENGINEERING LTD
 2193 Lynhaven Rd., Peterborough, ON. K9K 1W8
 Tel: (705) 775-1517

PROFESSIONAL ENGINEER
 T. ST. JEAN
 P. BERTHELOT
 P. BERTHELOT
 SCALE: AS NOTED

LIGHTING SCHEDULE			
SYMBOL	MODEL NUMBER	MANUFACTURER	DESCRIPTION
A	22FP2140C	EATON-METALUX OR APPROVED EQUAL	2'x2' LED FLAT PANEL, 2494 LUMENS (20.7W), 4000K, 120V
B	22FP3240C	EATON-METALUX OR APPROVED EQUAL	2'x2' LED FLAT PANEL, 3560 LUMENS (30W), 4000K, 120V
C	22FP4240C	EATON-METALUX OR APPROVED EQUAL	2'x2' LED FLAT PANEL, 4465 LUMENS (38.3W), 4000K, 120V
D	4SNLED-LD5-56SL-LN-UVV-L840-Q1-U	EATON-METALUX OR APPROVED EQUAL	4" SURFACE MOUNTED STRIP LIGHT, SEMI-FROST LENS, 5708 LUMENS (46W), 120V, 4000K, 0-10V DIMMING DRIVER
E	4SNLED-LD5-64SL-LN-UVV-L840-Q1-U	EATON-METALUX OR APPROVED EQUAL	4" SURFACE MOUNTED STRIP LIGHT, SEMI-FROST LENS, 6435 LUMENS (55W), 120V, 4000K, 0-10V DIMMING DRIVER
F	4ILED-LD5-14-W-FL-UVV-L840-Q2-U C/W CHAIN SET (SEE DESCRIPTION)	EATON-METALUX OR APPROVED EQUAL	4" INDUSTRIAL LED LINEAR BAY FIXTURE, WIDE DISTRIBUTION, FROSTED ACrylic LENS AND FRAME, ~14000 LUMENS, 98W, 120V, 4000K C/W CHAIN SET TO MOUNT LIGHTS AT ~20' A.F.F. IN A SLOPED CEILING
H	SLD405840WH C/W 4" COMPATIBLE HOUSING	EATON-HALO OR APPROVED EQUAL	4" SURFACE LED DOWNLIGHT, 80CRI, 120V, WHITE, 4000K, 800 LUMENS (12.2W), WET LOCATION LISTED
J	SMD4RTRMxx C/W 4" COMPATIBLE HOUSING	EATON-HALO OR APPROVED EQUAL	4" SURFACE LED DOWNLIGHT, 90CRI, 120V, WHITE, 4000K, 600 LUMENS (9W), WET LOCATION LISTED

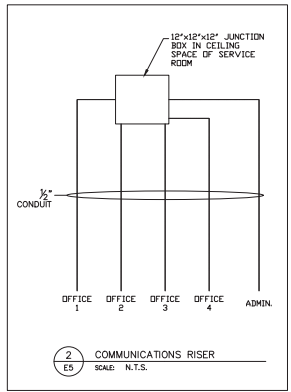
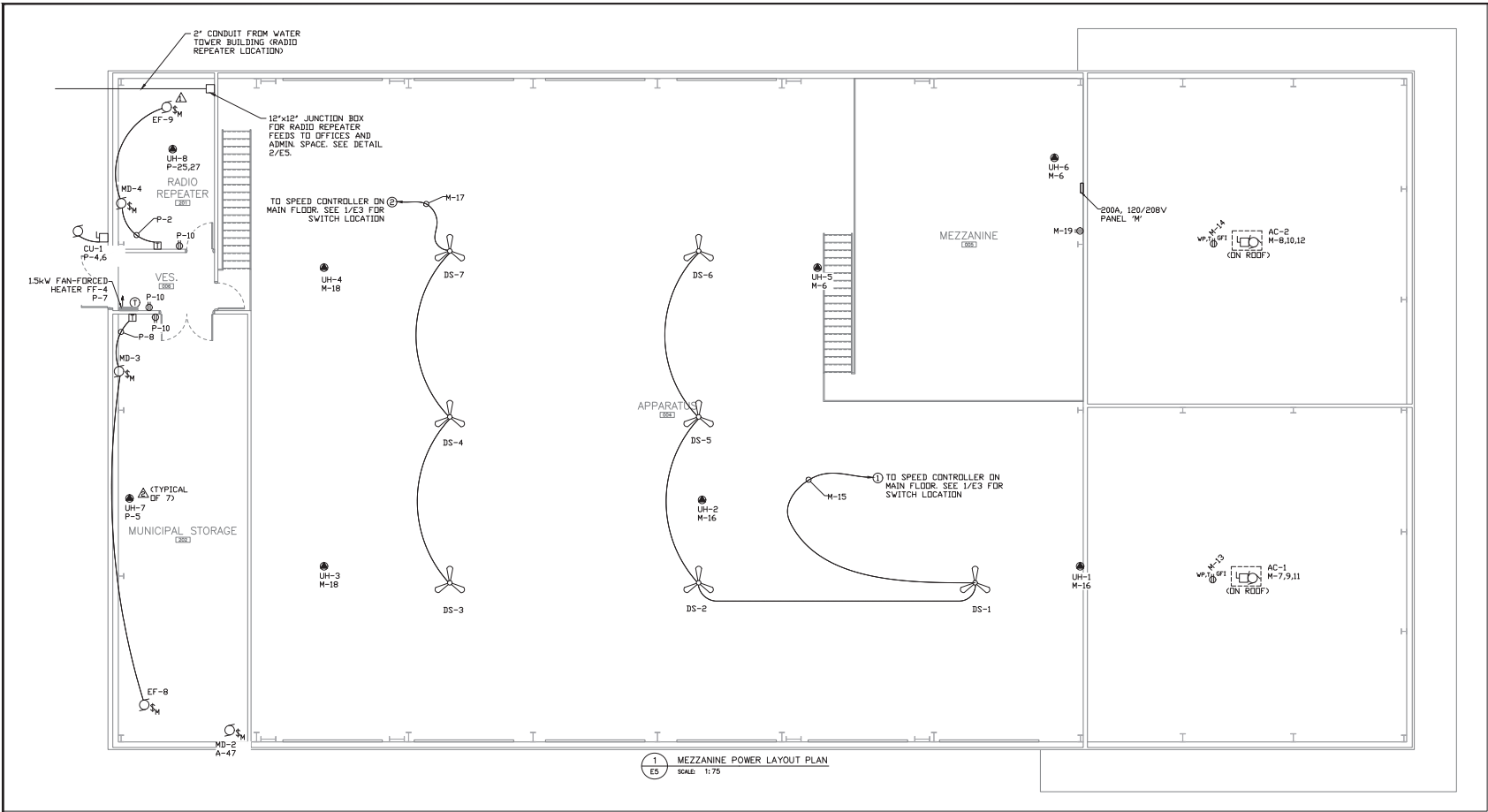
LIGHTING SCHEDULE			
SYMBOL	MODEL NUMBER	MANUFACTURER	DESCRIPTION
K	WD02-LED-P1-40K-80CRI-ITM-MVOLT-SRM-PIRH1FC3V-DBLD	LITHONIA LIGHTING	WALL MOUNTED LED FIXTURE, P1 LUMEN PACKAGE (1,133 LUMENS, 11W), 80CRI, FORWARD THROW MEDIUM DISTRIBUTION, 120V, SURFACE MOUNT BRACKET, BI-LEVEL MOTION SENSOR FOR 15'-30' MOUNTING HEIGHTS WITH PHOTOCCELL PRE-PROGRAMMED FOR DUSK TO DAWN OPERATION, BLACK IN COLOUR
L	WD0E1-LED-P1-40K-80CRI-IF-MVOLT-SRM-PE-DBLD	LITHONIA LIGHTING	WALL MOUNTED LED FIXTURE, P1 LUMEN PACKAGE (1,200 LUMENS, 10W), 80CRI, VISUAL COMFORT FORWARD THROW, 120V, SURFACE MOUNT BRACKET, BUTTON TYPE PHOTOCCELL, BLACK IN COLOUR

LIGHTING CONTROLS SCHEDULE			
SYMBOL	MODEL NUMBER	MANUFACTURER	DESCRIPTION
\$A	LVS-M-1-PL-WH	HUBBELL	MANUAL ON/OVERRIDE OFF LOW VOLTAGE MOMENTARY SWITCH, WHITE IN COLOUR
\$B	LVS-L-1-PL-WH	HUBBELL	AUTO ON/OVERRIDE OFF LOW VOLTAGE LATCHING SWITCH, WHITE IN COLOUR
\$C	LHMTS1	HUBBELL	PASSIVE, DUAL TECHNOLOGY WALL SWITCH OCCUPANCY SENSOR, 120V, WHITE IN COLOUR, PROGRAMMED AUTO-ON (WALL PLATE NOT INCLUDED)
\$T	--	--	TIMER SWITCH COMPATIBLE WITH LED LIGHTING
\$D	LVSD-ML-4-WH	HUBBELL OR APPROVED EQUAL	MANUAL ON/OVERRIDE OFF LOW VOLTAGE MOMENTARY/LATCHING DIMMING SWITCH, WHITE IN COLOUR
PPP	UVFP/UVFPM/MPSA	HUBBELL	UNIVERSAL VOLTAGE POWER PACK/AUXILIARY PACK
A7/2	OMNDT200OB127	HUBBELL	DUAL TECHNOLOGY, 360° CEILING MOUNTED SENSOR, LINE VOLTAGE, WHITE IN COLOUR
B7/2	OMNDT2000	HUBBELL	DUAL TECHNOLOGY, 360° CEILING MOUNTED SENSOR, LOW VOLTAGE, WHITE IN COLOUR C/W MANUAL ON/OFF POWER PACK
C7/2	PIR100H	HUBBELL	PASSIVE INFRARED CEILING HALLWAY SENSOR, 16'x16' LINEAR FEET

PROJECT
NEW FIRE STATION No. 1
 988 County Road 10
 Millbrook, Ontario

TITLE
MAIN FLOOR LIGHTING LAYOUT PLAN

FILE No. 473 DWG. No. **E4**



POWER LEGEND		RECEPTACLE LEGEND	
▽	DATA/PHONE OUTLET	⊕	RECEPTACLE
●	DIRECT CONNECTION	⊕	240V RECEPTACLE
⊕	MOTOR RATED SWITCH	⊕	WEATHERPROOF
⊕	SINGLE PHASE MOTOR	T	20A T-SLOT
⊕	THREE PHASE MOTOR	C	CEILING MOUNTED
⊕	DISCONNECT SWITCH	CR	RETRACTABLE CORD REEL
⊕	MOTOR STARTER	GFI	GROUND FAULT INTERRUPTER
⊕	AUTOMATIC DOOR PUSHBUTTONS	*	MOUNTED ABOVE COUNTER
⊕	LOCK BUTTON		
⊕	SPEED CONTROLLER SWITCH		
⊕	MASTER GARAGE DOOR OPERATOR SWITCH		
⊕	ELECTRICAL PANEL		
⊕	DESTRATIFICATION FAN		

Rev.	Date	Description	By	App.
0	22/05/02	ISSUED FOR PERMIT & TENDER	PGB	-

BERTHELOT ENGINEERING LTD
 2193 Lynhaven Rd., Peterborough, ON. K9K 1W8
 Tel: (705) 775-1517

DWN. T. ST. JEAN
 CHK. P. BERTHELOT
 DSN. PGB/TMS
 SCALE: AS NOTED
 ELECTRICAL BCIN 23396

PROJECT: **NEW FIRE STATION No. 1**
 988 County Road 10, Millbrook, Ontario

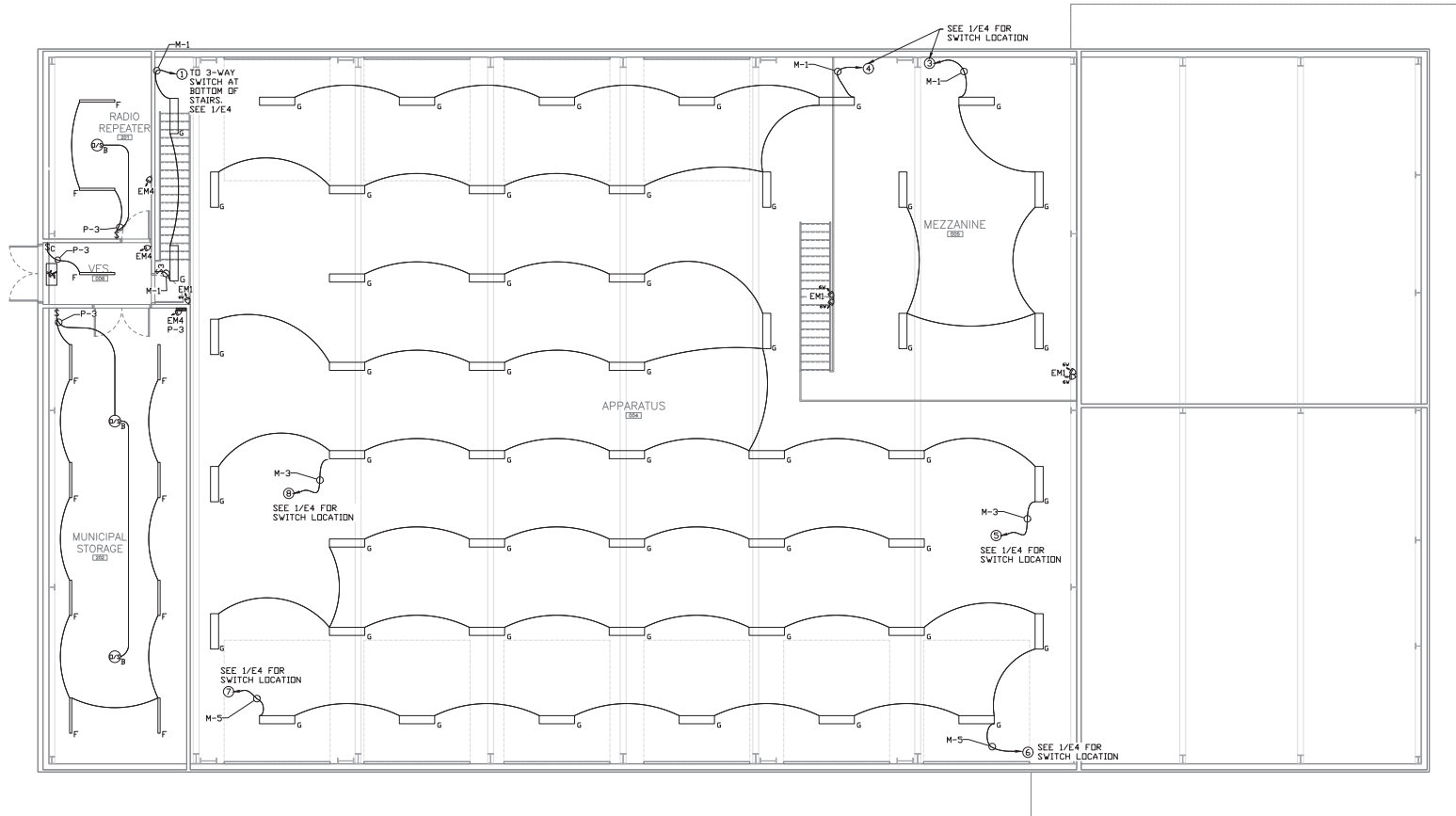
TITLE: **MEZZANINE POWER LAYOUT PLAN**

FILE No. 473 DWG. No. **E5**

NOTES:

△ UH-8 IS SUPPLIED AND INSTALLED BY ELECTRICAL.

⊕ UH-1, UH-2, UH-3, UH-4, UH-5, UH-6, & UH-7 ARE SUPPLIED AND INSTALLED BY MECHANICAL, WIRED BY ELECTRICAL.



1 MEZZANINE LIGHTING LAYOUT PLAN
 E6 SCALE: 1:75

0	22/05/02	ISSUED FOR PERMIT & TENDER	PGB	-
Rev.	Date	Description	By	App.

BERTHELOT ENGINEERING LTD
 2193 Lynhaven Rd., Peterborough, ON, K9K 1W8
 Tel: (705) 775-1517

PROFESSIONAL ENGINEER
 P.G.P. BERTHELOT
 May 2/2008
 PROVINCE OF ONTARIO

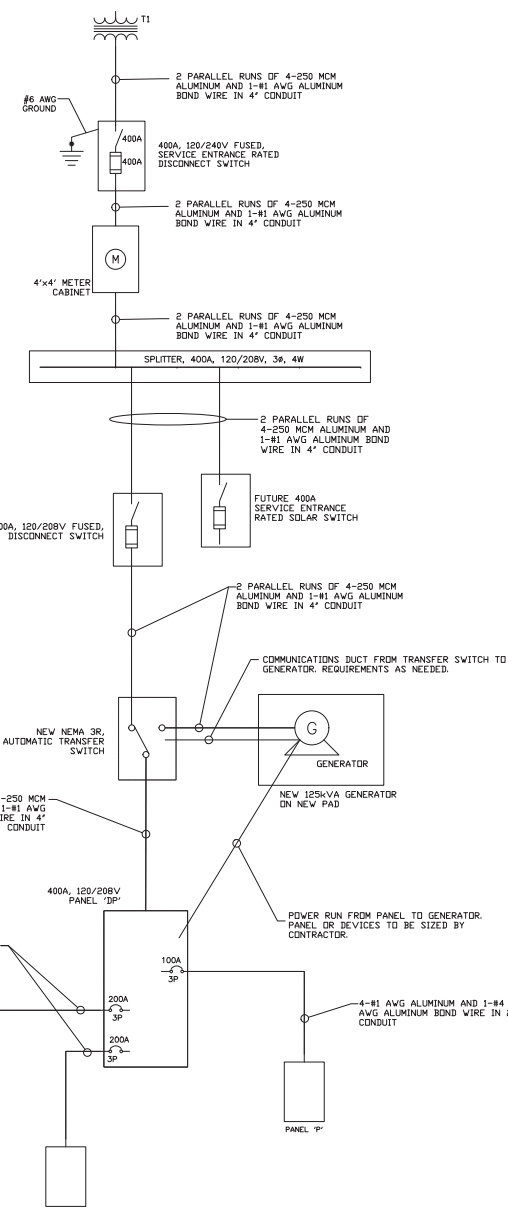
DWN. T. ST. JEAN
 CHK. P. BERTHELOT
 DSN. PGB/TMS
 SCALE: AS NOTED

ELECTRICAL BCIN 23398

PROJECT
 NEW FIRE STATION No. 1
 988 County Road 10
 Milbrook, Ontario

TITLE
 MEZZANINE LIGHTING LAYOUT PLAN

FILE No. 473
 DWG. No. **E6**



1 SINGLE LINE DIAGRAM
E7 SCALE: N.T.S.

PANEL:	LOCATION:	ELECTRICAL ROOM	VOLTAGE:	208/120V 3Ø 4W	IC RATING:	10KA		
TYPE:	SURFACE MOUNTED	MAIN BUS:	400A	CIRCUITS:	30			
FED. FROM:	TRANSFER SWITCH	MAIN BREAKER:	200A					
CIRCUIT DESCRIPTION	LOAD (kVA)	CCT BKR	CCT #	PHASE	CCT #	CCT BKR	LOAD (kVA)	CIRCUIT DESCRIPTION
PANEL 'A'	x	200A	1	a	2	1	200A	PANEL 'M'
PANEL 'P'	x	100A	9	c	11	9	100A	

PANEL:	LOCATION:	ELECTRICAL ROOM	VOLTAGE:	208/120V 3Ø 4W	IC RATING:	10KA		
TYPE:	SURFACE MOUNTED	MAIN BUS:	225A	CIRCUITS:	84			
FED. FROM:	T1	MAIN BREAKER:	200A					
CIRCUIT DESCRIPTION	LOAD (kVA)	CCT BKR	CCT #	PHASE	CCT #	CCT BKR	LOAD (kVA)	CIRCUIT DESCRIPTION
FF-1	x	15A	1	b	2	15A	15A	OFFICE 1 & 3 RECEPTACLES
FF-2	x	15A	5	c	6	15A	15A	OFFICE 4 RECEPTACLES
TRAINING/PPE/WASHROOM LTG	x	20A	9	b	8	20A	20A	ADMIN. AREA RECEPTACLES
OFFICE/KITCHEN/ADMIN LTG	x	15A	11	c	12	15A	15A	UNIVERSAL WASHRM GFCI REC.
SOFT LIGHTING	x	15A	13	b	14	15A	15A	UNIV. WASHRM DOOR OPS
OUTSIDE LIGHTING	x	15A	15	b	16	15A	15A	U.W. EMERG. CALL SYS. TX
PIPE CLEANING REC.	x	15A	17	c	18	20A	20A	KITCHEN T-SLOT RECEPTACLE
HOT WATER TANK	x	15A	19	c	20	20A	20A	KITCHEN T-SLOT RECEPTACLE
RECIRC. PUMP	x	15A	21	c	22	20A	20A	KITCHEN T-SLOT RECEPTACLE
ERV-1	x	15A	23	c	24	20A	20A	KITCHEN T-SLOT RECEPTACLE
BB-5/BB-6/BB-7	x	20A	25	c	26	15A	15A	KITCHEN FRIDGE RECEPTACLE
CO-NO2 SYSTEM 1	x	15A	27	c	28	15A	15A	CO-NO2 SYSTEM 2
TRAINING RM FLOOR BOX REC.	x	15A	29	c	30	15A	15A	TRAINING ROOM RECEPTACLES
TRAINING RM FLOOR BOX REC.	x	15A	31	c	32	15A	15A	TRAINING ROOM RECEPTACLES
FF-3	x	15A	35	c	34	15A	15A	TRAINING RM PROJECTOR REC.
EF-7 STARTER	x	15A	37	b	36	15A	15A	OUTSIDE GFCI RECEPTACLES
MD-1	x	15A	39	b	40	15A	15A	OUTSIDE GFCI RECEPTACLES
	x	15A	41	c	42	15A	15A	DISPLAY BOARD POWER

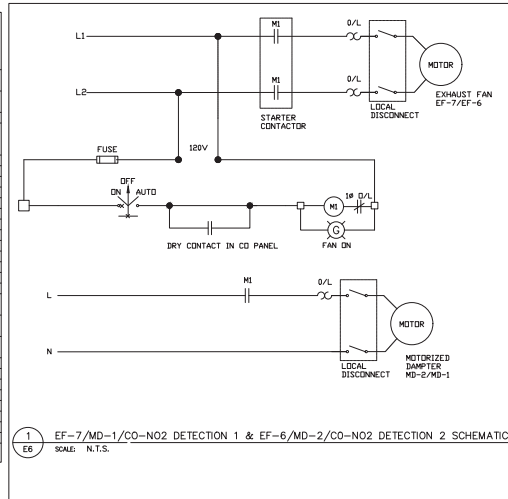
NOTES:
 (1) CONFIRM BREAKER SIZE WITH EQUIPMENT
 (2) BREAKER SHALL BE LOCKED AND PAINTED RED

PANEL:	LOCATION:	ELECTRICAL ROOM	VOLTAGE:	208/120V 3Ø 4W	IC RATING:	10KA		
TYPE:	SURFACE MOUNTED	MAIN BUS:	225A	CIRCUITS:	66			
FED. FROM:	T1	MAIN BREAKER:	200A					
CIRCUIT DESCRIPTION	LOAD (kVA)	CCT BKR	CCT #	PHASE	CCT #	CCT BKR	LOAD (kVA)	CIRCUIT DESCRIPTION
APPARATUS/AEZZ LIGHTING	x	20A	1	b	2	20A	20A	AIR COMPRESSOR
APPARATUS LIGHTING	x	20A	3	c	6	15A	15A	UH-5 & UH-6
AC-1	x	30A	9	b	10	30A	30A	AC-2
AC-1 CONVENIENCE T-SLOT	x	20A	13	c	12	20A	20A	AC-2 CONVENIENCE T-SLOT
DS-1/2/5/6	x	20A	15	b	16	15A	15A	UH-1 & UH-2
DS-3/4/7	x	20A	17	c	18	15A	15A	UH-3 & UH-4
MEZZANINE RECEPTACLE	x	15A	19	c	20	15A	15A	COORD REEL RECEPTACLE
OVERHEAD DOOR	x	20A	21	b	22	15A	15A	COORD REEL RECEPTACLE
OVERHEAD DOOR	x	20A	23	c	24	15A	15A	COORD REEL RECEPTACLE
OVERHEAD DOOR	x	20A	25	c	26	15A	15A	COORD REEL RECEPTACLE
OVERHEAD DOOR	x	20A	27	b	28	15A	15A	COORD REEL RECEPTACLE
OVERHEAD DOOR	x	20A	29	c	30	15A	15A	COORD REEL RECEPTACLE
OVERHEAD DOOR	x	20A	31	c	32	15A	15A	COORD REEL RECEPTACLE
OVERHEAD DOOR	x	20A	33	c	34	15A	15A	COORD REEL RECEPTACLE
OVERHEAD DOOR	x	20A	35	c	36	15A	15A	COORD REEL RECEPTACLE
OVERHEAD DOOR	x	20A	37	b	38	15A	15A	COORD REEL RECEPTACLE
OVERHEAD DOOR	x	20A	39	b	40	15A	15A	OVERHEAD DOOR
OVERHEAD DOOR	x	20A	41	c	42	20A	20A	OVERHEAD DOOR
OVERHEAD DOOR	x	20A	43	b	44	20A	20A	OVERHEAD DOOR
OVERHEAD DOOR	x	20A	45	b	46	20A	20A	OVERHEAD DOOR
OVERHEAD DOOR	x	20A	47	c	48	30A	30A	DH-1
OVERHEAD DOOR	x	20A	49	c	50	20A	20A	SPARE
OVERHEAD DOOR	x	20A	51	c	52	20A	20A	SPARE
	x	20A	53	c	54	20A	20A	SPARE
	x	20A	55	c	56	20A	20A	SPARE
	x	20A	57	c	58	15A	15A	SPARE
	x	20A	59	c	60	15A	15A	SPARE
	x	20A	61	c	62	15A	15A	SPARE
	x	20A	63	c	64	15A	15A	SPARE
	x	20A	65	c	66	15A	15A	SPARE

PANEL:	LOCATION:	ELECTRICAL ROOM	VOLTAGE:	208/120V 3Ø 4W	IC RATING:	10KA		
TYPE:	SURFACE MOUNTED	MAIN BUS:	225A	CIRCUITS:	42			
FED. FROM:	T1	MAIN BREAKER:	200A					
CIRCUIT DESCRIPTION	LOAD (kVA)	CCT BKR	CCT #	PHASE	CCT #	CCT BKR	LOAD (kVA)	CIRCUIT DESCRIPTION
PARAMEDICS LIGHTING	x	15A	1	a	2	15A	15A	EF-9 & MD-4
2ND FLOOR/PCOP LIGHTING	x	15A	3	b	4	20A	20A	CU-1
UH-7	x	15A	5	c	6	15A	15A	EF-8 & MD-3
FF-4	x	20A	7	a	8	15A	15A	2ND FLOOR RECEPTACLE
ERV-1	x	15A	9	b	10	15A	15A	PCOP SUPPLY T-SLOT
DH-2	x	15A	11	c	12	20A	20A	PCOP SUPPLY T-SLOT
SAC-1	x	15A	13	a	14	20A	20A	PCOP SUPPLY T-SLOT
PCOP NARC MEDS FRIDGE	x	15A	15	b	16	15A	15A	PCOP SUPPLY T-SLOT
PCOP NARC RECEPTACLE	x	15A	17	c	18	20A	20A	PCOP SUPPLY T-SLOT
PCOP QUIET RECEPTACLE	x	15A	19	a	20	20A	20A	PCOP SUPPLY T-SLOT
WR GFCI RECEPTACLE	x	15A	21	b	22	20A	20A	PCOP SUPPLY T-SLOT
OUTSIDE RECEPTACLE	x	15A	23	c	24	20A	20A	PCOP SUPPLY T-SLOT
UH-7	x	15A	25	a	26	15A	15A	PCOP SUPPLY T-SLOT
SPARE	x	15A	27	b	28	15A	15A	PCOP SUPPLY T-SLOT
SPARE	x	15A	29	c	30	15A	15A	PCOP SUPPLY T-SLOT
SPARE	x	15A	31	a	32	15A	15A	PCOP SUPPLY T-SLOT
SPARE	x	15A	33	b	34	15A	15A	PCOP SUPPLY T-SLOT
SPARE	x	20A	35	c	36	15A	15A	PCOP SUPPLY T-SLOT
SPARE	x	20A	37	a	38	15A	15A	PCOP SUPPLY T-SLOT
SPARE	x	20A	39	b	40	15A	15A	PCOP SUPPLY T-SLOT
SPARE	x	20A	41	c	42	15A	15A	PCOP SUPPLY T-SLOT

(1) BREAKER SHALL BE LOCKED AND PAINTED RED

PANEL:	LOCATION:	ELECTRICAL ROOM	VOLTAGE:	208/120V 3Ø 4W	IC RATING:	10KA		
TYPE:	SURFACE MOUNTED	MAIN BUS:	225A	CIRCUITS:	84			
FED. FROM:	T1	MAIN BREAKER:	200A					
CIRCUIT DESCRIPTION	LOAD (kVA)	CCT BKR	CCT #	PHASE	CCT #	CCT BKR	LOAD (kVA)	CIRCUIT DESCRIPTION
EF-6 STARTER	x	15A	43	a	44	15A	15A	SERVICE ROOM RECEPTACLE
MD-2	x	15A	45	b	46	15A	15A	SERV. RM COOM. T-SLOT REC.
MD-2	x	15A	47	c	48	15A	15A	SERV. RM SECURITY T-SLOT REC.
RANGE HOOD	x	15A	49	a	50	15A	15A	BB-1
STOVE	x	50A	51	b	52	20A	20A	SPARE
PIPE CLEANING T-SLOT REC.	x	20A	55	c	56	20A	20A	SPARE
PIPE CLEANING T-SLOT REC.	x	20A	57	b	58	15A	15A	SPARE
PIPE CLEANING T-SLOT REC.	x	20A	59	c	60	15A	15A	PIPE STORAGE/CORRIDOR REC.
DRYER RECEPTACLE	x	30A	61	a	62	15A	15A	WOMEN'S WASHROOM GFCI REC.
BUNKER GEAR WASHER UNIT	x	65	65	b	64	15A	15A	WOMEN'S WASHROOM GFCI REC.
BUNKER GEAR WASHER UNIT	x	67	67	c	66	15A	15A	EXIT SIGNS (2)
BUNKER GEAR WASHER UNIT	x	69	69	a	68	15A	15A	WASHING MACHINE REC.
BUNKER GEAR WASHER UNIT	x	71	71	b	70	15A	15A	SPARE
JANITOR GFCI RECEPTACLE	x	15A	73	c	72	15A	15A	SPARE
APPARATUS BAY RECEPTACLES	x	15A	75	a	74	15A	15A	SPARE
APPARATUS BAY RECEPTACLES	x	15A	77	b	76	15A	15A	SPARE
OUTDOOR WALL MOUNTED LTG	x	15A	79	c	78	15A	15A	SPARE
	x	81	81	a	80	100A	100A	PANEL 'P'
	x	83	83	b	82	100A	100A	PANEL 'P'



Rev.	Date	Description	By	App.
0	22/05/02	ISSUED FOR PERMIT & TENDER	POB	

BERTHELOT ENGINEERING LTD
 2193 Lynhaven Rd., Peterborough, ON. K9K 1W8
 Tel: (705) 775-1517

OWN.	T. ST. JEAN
CHK.	P. BERTHELOT
DSN.	POB/TMS
SCALE:	AS NOTED

PROJECT
NEW FIRE STATION No. 1
 988 County Road 10
 Millbrook, Ontario

TITLE
SINGLE LINE DIAGRAM AND PANEL SCHEDULES

FILE No. 473 DWG. No. **E7**

