

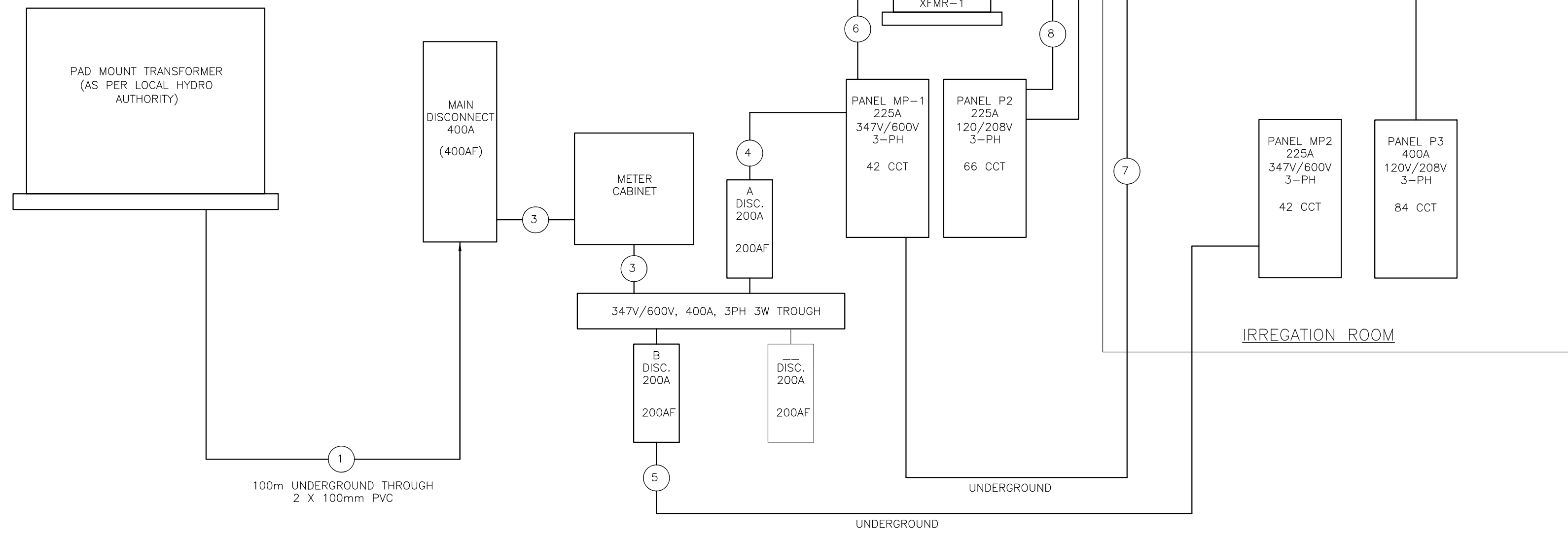
ELECTRICAL GENERAL NOTES	
A	ALL WIRING AND CONDUCTOR SIZING TO BE ACCORDING TO THE ELECTRICAL SAFETY CODE FOR ONTARIO.
B	ELECTRICAL CONTRACTOR TO CONFORM TO GENERAL SPECIFICATIONS, ARCHITECTURAL DRAWINGS, AND THE ONTARIO ELECTRICAL SAFETY CODE.
C	ELECTRICAL CONTRACTOR TO VERIFY SITE REQUIREMENTS AND EXISTING CONDITIONS. REQUIRES NEW SERVICE, TRANSFORMER, AND UNDERGROUND SERVICE TO BUILDING. SEE SITE PLAN FOR PROPOSED LOCATION OF TRANSFORMER.
D	ELECTRICAL CONTRACTOR TO VERIFY REQUIREMENTS OF ALL MECHANICAL EQUIPMENT ON SITE. VERIFY FUSE TYPES, SIZES AND LOCATIONS IN SUB-PANELS.
E	WALL RECEPTACLES TO BE MOUNTED AT MINIMUM HEIGHT OF 400mm TO CENTRE & TO BE LABELLED WITH PANEL & CCT# IN RED DYMO TAPE.
F	ALL BUILDING CONTROLS AND SWITCHES SHALL BE INSTALLED BETWEEN 900mm AND 1100mm FROM FLOOR FOR BARRIER FREE REQUIREMENTS. THERMOSTATS AND PULL STATIONS TO BE MOUNTED AT MAXIMUM HEIGHT OF 1200mm TO CENTRE.
G	ELECTRICAL CONTRACTOR TO PROVIDE TYPE WRITTEN DIRECTORY CARDS FOR EACH PANEL.
H	ESA INSPECTION CERTIFICATES REQUIRED FOLLOWING COMPLETION OF ALL ELECTRICAL WORK.
I	SEPTIC SYSTEM BY OTHERS. ELECTRICIAN REQUIRED TO SUPPLY CONDUCTORS AND ELECTRICAL FEED TO MAIN SEPTIC CONTROL PANEL. CONFIRM PANEL LOCATION AND LOAD REQUIREMENTS WITH SEPTIC CONTRACTOR.
J	ELECTRICAL CONNECTIONS FOR MECHANICAL EQUIPMENT REQUIRE SUPPLY OF DISCONNECT SWITCH W/ FUSES AS SPECIFIED BY THE MANUFACTURER, TO BE WEATHER-PROOF WHERE REQUIRED. INCLUDE DISCONNECTS FOR DOCK LEVELERS.
K	CEILING CAVITY IN OFFICE AREA IS A RETURN AIR PLENUM. ALL MATERIALS MUST BE NON COMBUSTIBLE AND SUITABLY RATED FOR FSI OF 25 & SDI 50. ALL DATA CABLES ETC. REQUIRE AN FT6 RATING.
L	ALL WIRING IN GROW ROOMS TO BE ENCLOSED IN PVC CONDUIT.
M	DATA AND COMMUNICATION REQUIRED TO BE COORDINATED AND INSTALLED BY SUITABLE CONTRACTOR. VERIFY SERVICE REQUIREMENTS AND MAIN FEED POINTS FROM UTILITY AND POSSIBLE TIE-IN WITH EXISTING BUILDING.
N	ACCESS CONTROL SYSTEM REQUIRED FOR DOORS AS SHOWN. ELECTRICAL CONTRACTOR TO CONFIRM ELECTRICAL REQUIREMENTS FOR DOORS THAT REQUIRE CARD ACCESS/SECURITY CONTROL. PROVIDE POWER AS REQUIRED. SEE "SD" IN EQUIPMENT SCHEDULE.

LUMINAIRE SCHEDULE						
ITEM	DESCRIPTION	VOLT	WATT	BULB	MOUNTING	CATALOGUE OR DESCRIPTION
A	2x2 FLAT PANEL	347V	30W	LED	RECESSED	TUROLIGHT RGD-BLP2 4000K MULTI
B	1'x4' UTILITY STRIP	347V	48W	LED	SURFACE	TUROLIGHT DL-WAS 4' 4000K DIMMABLE
C	1'x4' UTILITY STRIP	347V	48W	LED	SUSPENDED	TUROLIGHT DL-WAS 4' 4000K DIMMABLE
D	LED GROW LIGHT	240V	645W	LED	SUSPENDED	FIXTURE BY OWNER. INSTALL AND CONNECT AS REQUIRED.
E	LED GROW LIGHT	240V	780W	LED	SUSPENDED	FIXTURE BY OWNER. INSTALL AND CONNECT AS REQUIRED.
F	LED STRIP GROW LIGHT	347V	336W	LED	SUSPENDED	HortLED TOP 2.0, DAYLIGHT SPEC.
G	EXTERIOR BUILDING LIGHT	120V	70W	LED	SURFACE	TUROLIGHT SSL-WP1 4000K W/ PHOTOCELL
H	EXTERIOR BUILDING LIGHT	120V	70W	LED	SURFACE	TUROLIGHT SSL-WP3S FULL CUTOFF 4000K W/ PHOTOCELL
EM1	EMERG. HEADS W/ 12V BATT.	120V	36W	LED	SURFACE	AIMLITE EBST-2L BATTERY PACK W/ TWO PAR18 2W LED HEADS
EM2	EXTRA HEADS (MATCH ABOVE)	12V	3W	LED	SURFACE	PAR18 2W, CONNECT TO EM1

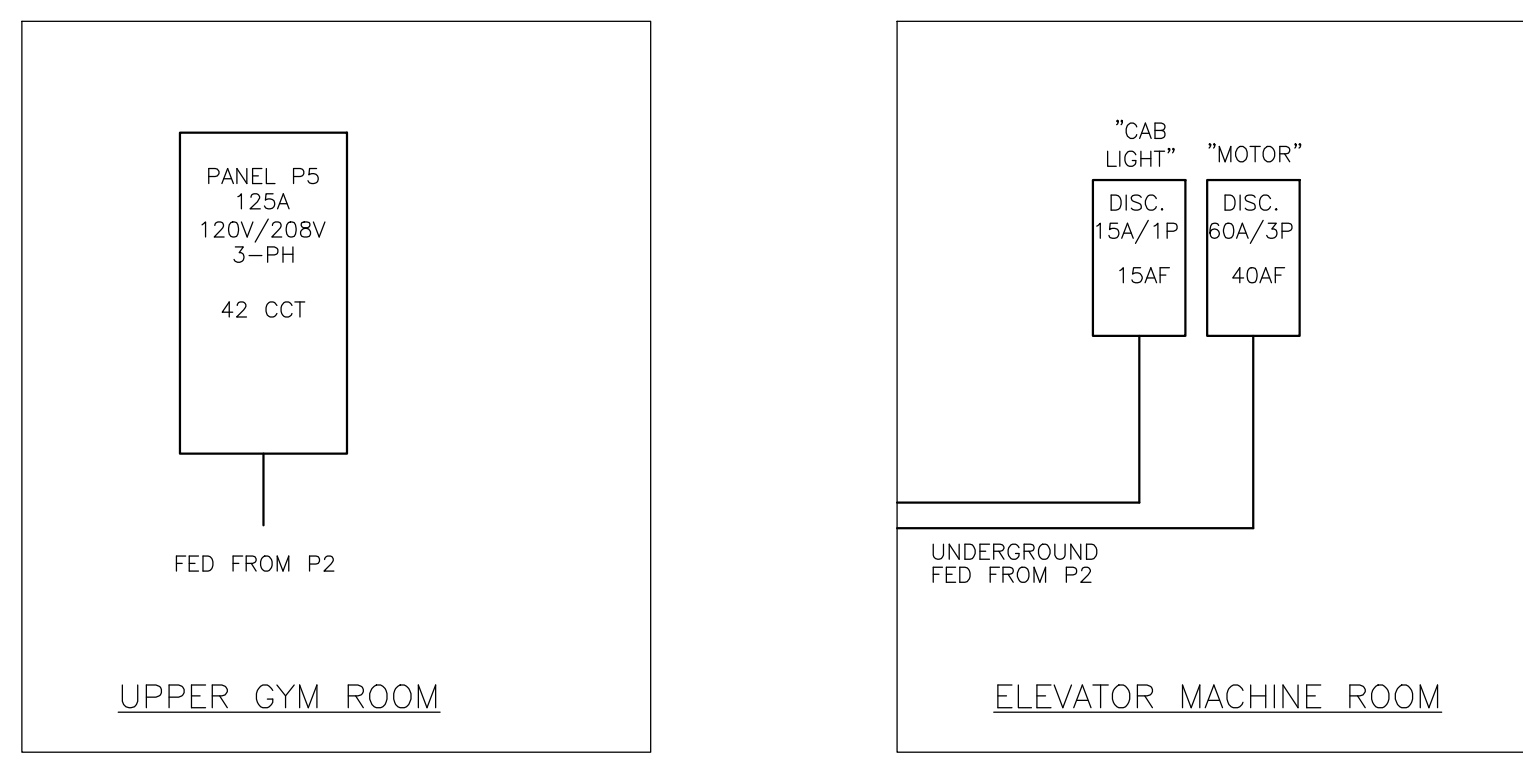
NOTE: ALL FIXTURES AND SWITCHING TO BE DETERMINED AND/OR APPROVED BY OWNER  
 1. 36W BATTERY SIZE SUITABLE FOR 24 X 3W HEADS FOR 30 MINUTE RUN TIME.  
 2. EXTERIOR LIGHT CIRCUIT TO BE THROUGH SEPARATE PHOTOSENSOR AND MANUAL SWITCHES.

EQUIPMENT SCHEDULE									
ITEM (SYM)	DESCRIPTION	SUPPLIED BY: E-ELECTRICIAN M-MECHANICAL O-OWNER	VOLT	PH	WATT	HP	MCA (AMP)	MOCF (AMP)	REMARKS
RTU1	ROOFTOP HVAC UNIT 4-TON	M	575	3		1	10	15	1
RTU2	ROOFTOP HVAC UNIT 3-TON	M	575	3		1	10	15	1
RTU3	ROOFTOP HVAC UNIT 4-TON	M	575	3		1	10	15	1
RTUW	ROOFTOP HVAC UNIT 6-TON	M	575	3		1	10	15	1
RTUX	ROOFTOP HVAC UNIT 4-TON	M	575	3		1	17	20	1
RTUY	ROOFTOP HVAC UNIT 4-TON	M	575	3		1	10	15	1
AH1-AH5	AIR HANDLER	M	120	1			2		1
AC	AC CONDENSER	M	208	1		3/4	13A		1
HP1	WALL MOUNTED AC UNIT	M	208	1	30				2
HP2	WALL MOUNTED AC UNIT	M	208	1	30				2
DEH	DEHUMIDIFIER - DUCTED	M	120	1			5.2A		1
HRV1	HEAT RECOVERY VENTILATOR	M	208	1		2X 1/2	9.2		1
HRV2	HEAT RECOVERY VENTILATOR	M	120	1			5.5A		
EF1	BATHROOM FAN	M	120	1	70				
CO	GAS DETECTOR CONTROL UNIT W/ DIGITAL SENSORS	M	120	1	200				
DO	POWER DOOR OPERATOR DITEC AUTO SWING HA-8	O	115	1			3.0		
SD	SECURITY DOOR - CARD LOCK ACCESS	O	TBD	1					
OD	OVERHEAD DOOR OPENER LIFTMASTER J-50-1-L5	O	115	1		1/2	9.8		
LIFT	SCISSOR LIFT	O	208	1		1-1/2	10		
IP1	IRRIGATION PUMP		208	1			5		
GWP	GREY WATER PUMP		208	1			5		

REMARKS:  
 1. PROVIDE DISCONNECTED SWITCH. SEE MECHANICAL DRAWINGS FOR LOCATION.  
 2. POWERED BY EXTERIOR CONDENSOR UNIT, CONFIRM WIRING ON SITE.



DETAIL 1 - SINGLE LINE DIAGRAM  
 SEE DRAWING E1.2 FOR PANEL DIRECTORIES

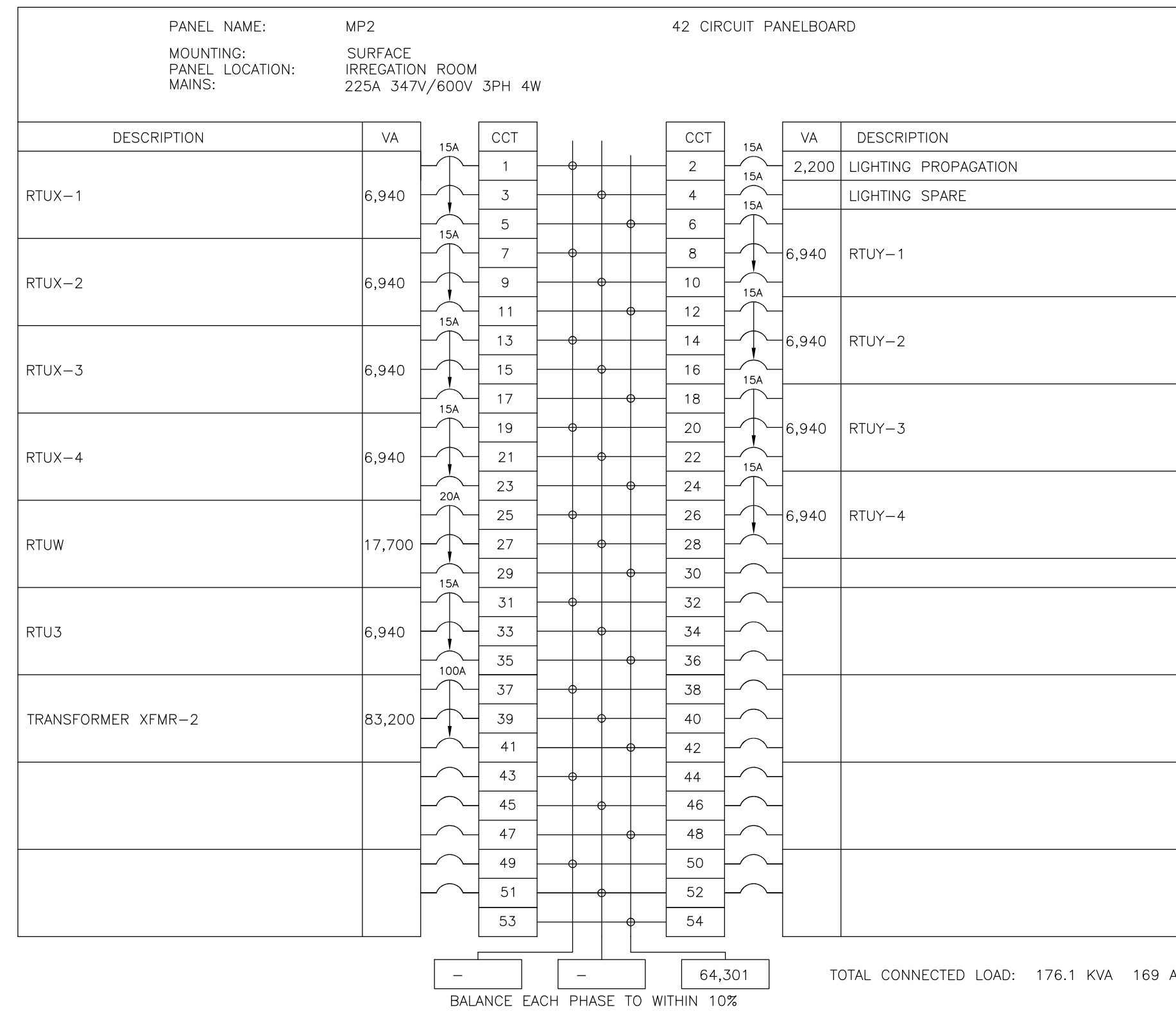
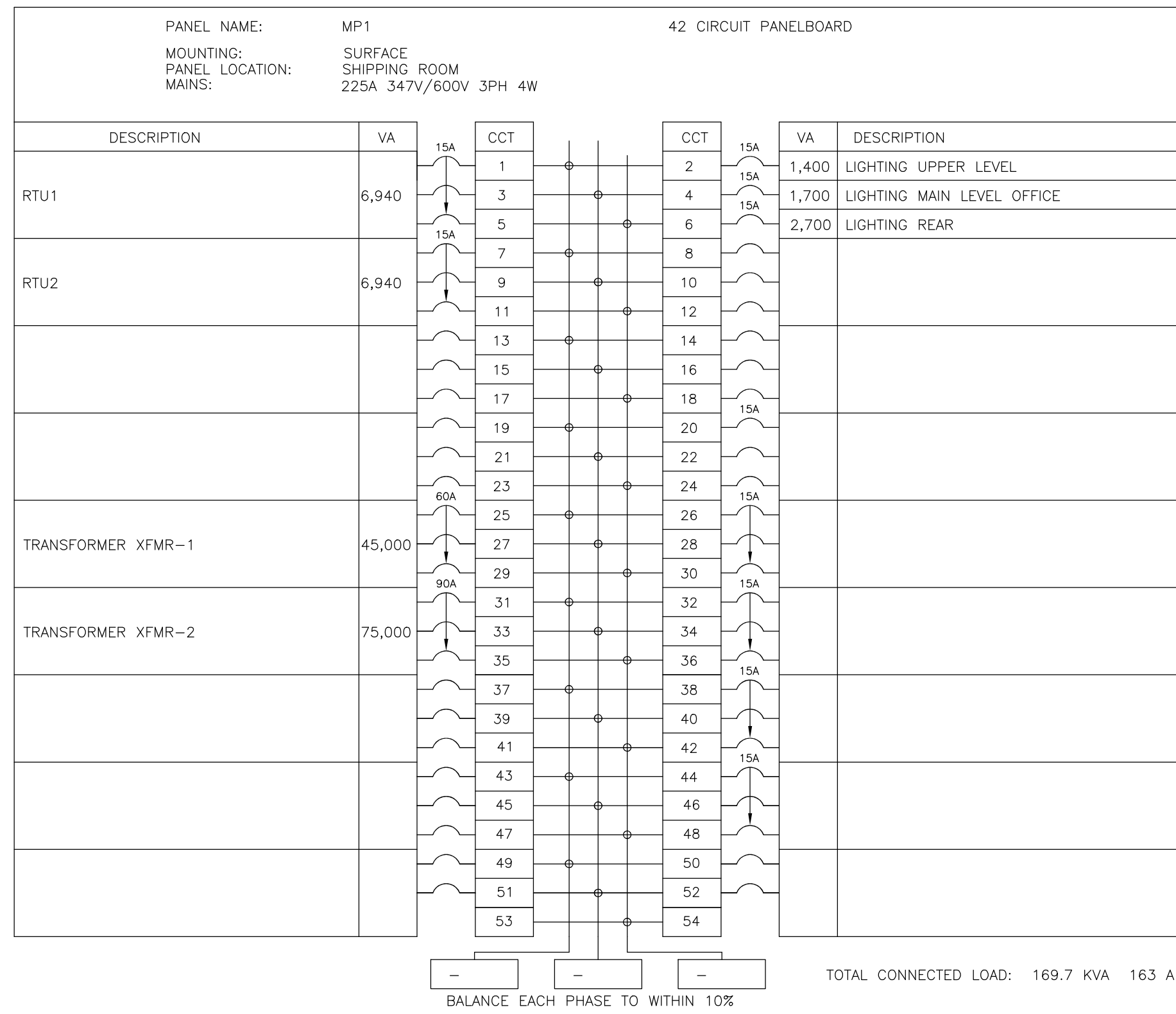


NOTES  
 1. THIS DRAWING IS 24X36. CAUTION WHEN SCALING FROM PRINTED DRAWINGS.  
 2. ALL DIMENSIONS ARE TO BE CHECKED ON SITE.  
 3. ALL DRAWINGS REMAIN THE PROPERTY OF NFR ENGINEERING LTD. AND SHALL NOT BE REPRODUCED OR REUSED WITHOUT WRITTEN PERMISSION.

- LEGEND
- OCCUPANCY SENSOR SWITCH
  - OCCUPANCY SENSOR - CEILING MOUNTED
  - 1 = CONTROLLED FIXTURE IDENTIFICATION
  - MOTION SENSOR - DELAY OFF
  - LEVITON 00515-10W 30minute DELAY
  - SINGLE POLE SWITCH
  - 9 = SWITCH ID
  - THREE WAY SWITCH
  - TIMER W/ 60/30/20/10 MINUTE SETTINGS
  - P1 = PANEL NUMBER 1
  - 1 = CIRCUIT NUMBER 1
  - o = SWITCH ID
  - DUPLEX RECEPTACLE
  - GF = W/GROUND FAULT CIRCUIT INTERRUPTER
  - 72 = MOUNTING HEIGHT
  - WP = WATER PROOF ENCLOSURE + GFI
  - FL = MOUNTED IN FLOOR BOX
  - SPLIT RECEPTACLE 44" A.F.F.
  - P = POWER FOR SPECIAL EQUIPMENT (AS NOTED)
  - IGR = ISOLATED GROUND RECEPTACLE
  - D = DUPLEX (ABOVE BACKSPASH)
  - 575/3PH OUTLET
  - Q = QUAD RECEPTACLE
  - SPO = SPECIAL PURPOSE OUTLET - (NOTED)
  - J = JUNCTION BOX/ROUGH-IN FOR POWER
  - xx = SEE EQUIPMENT SCHEDULE
  - SDO = SINGLE DATA OUTLET
  - DDO = DOUBLE DATA OUTLET
  - VO = VOICE OUTLET
  - CVD = COMBINATION VOICE/DATA
  - CF = CEILING FAN, SEE MECHANICAL DRAWINGS
  - ME = MOTOR OR MECHANICAL EQUIPMENT, TYPE AS NOTED
  - ET = ELECTRICAL TRANSFORMER
  - EP = ELECTRICAL PANEL OR BOX
  - EL = EMERGENCY LIGHTING (DOUBLE HEAD), EM2
  - EXIT = ILLUMINATED EXIT SIGN (DIRECTION NOTED)
  - PL = POT LIGHT FIXTURE AS NOTED
  - L2 = 2' x 2' LIGHT FIXTURE
  - L1 = 1' x 4' LIGHT FIXTURE
  - BWL = BUILDING WALL LIGHT
  - ASB = ALARM SIREN & BEACON
  - AB = ACTIVATION BUTTON
  - ADO = AUTOMATIC DOOR OPERATOR W/ BUTTONS
  - SD = SECURITY DOOR - CARD SWIPE ACCESS

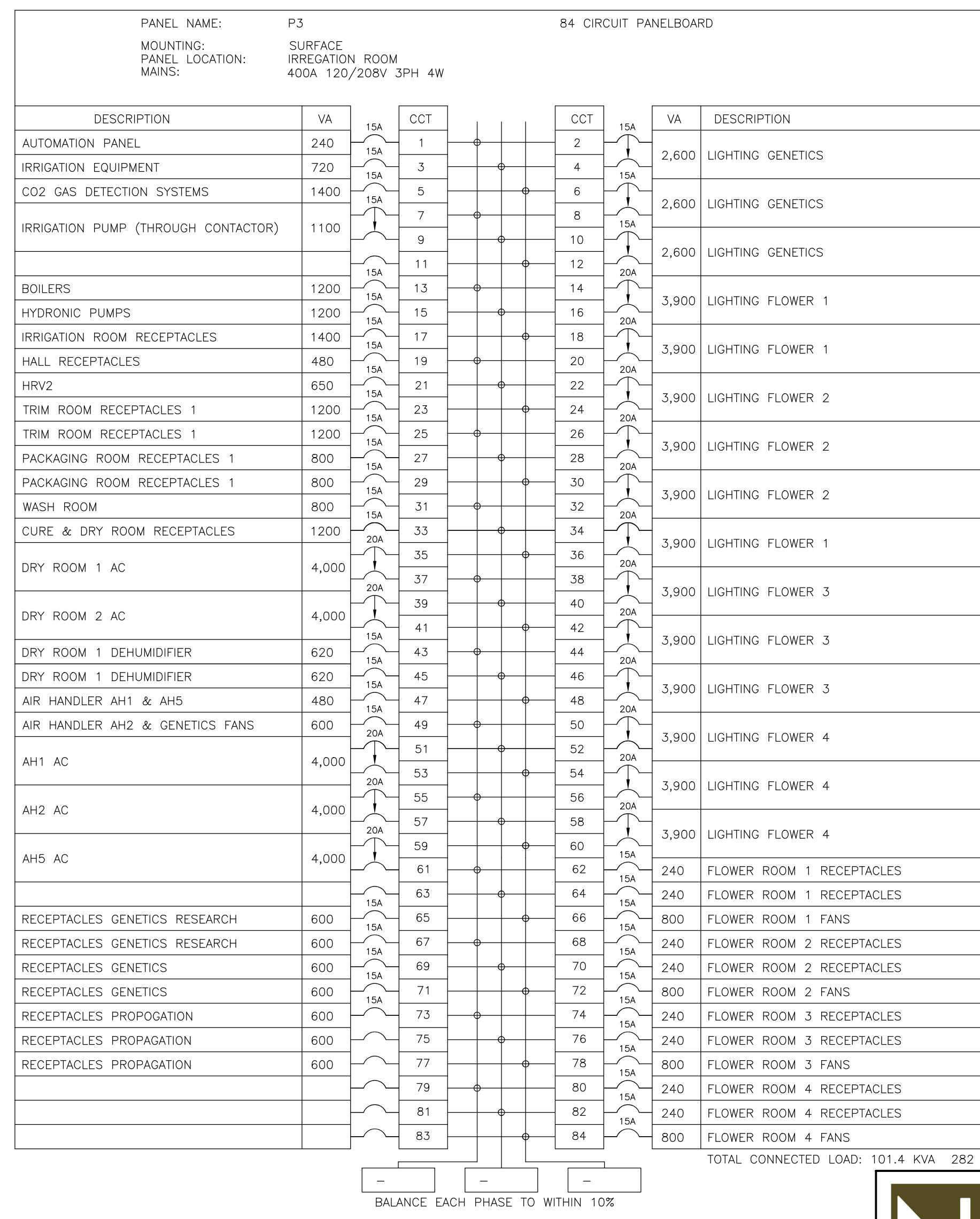
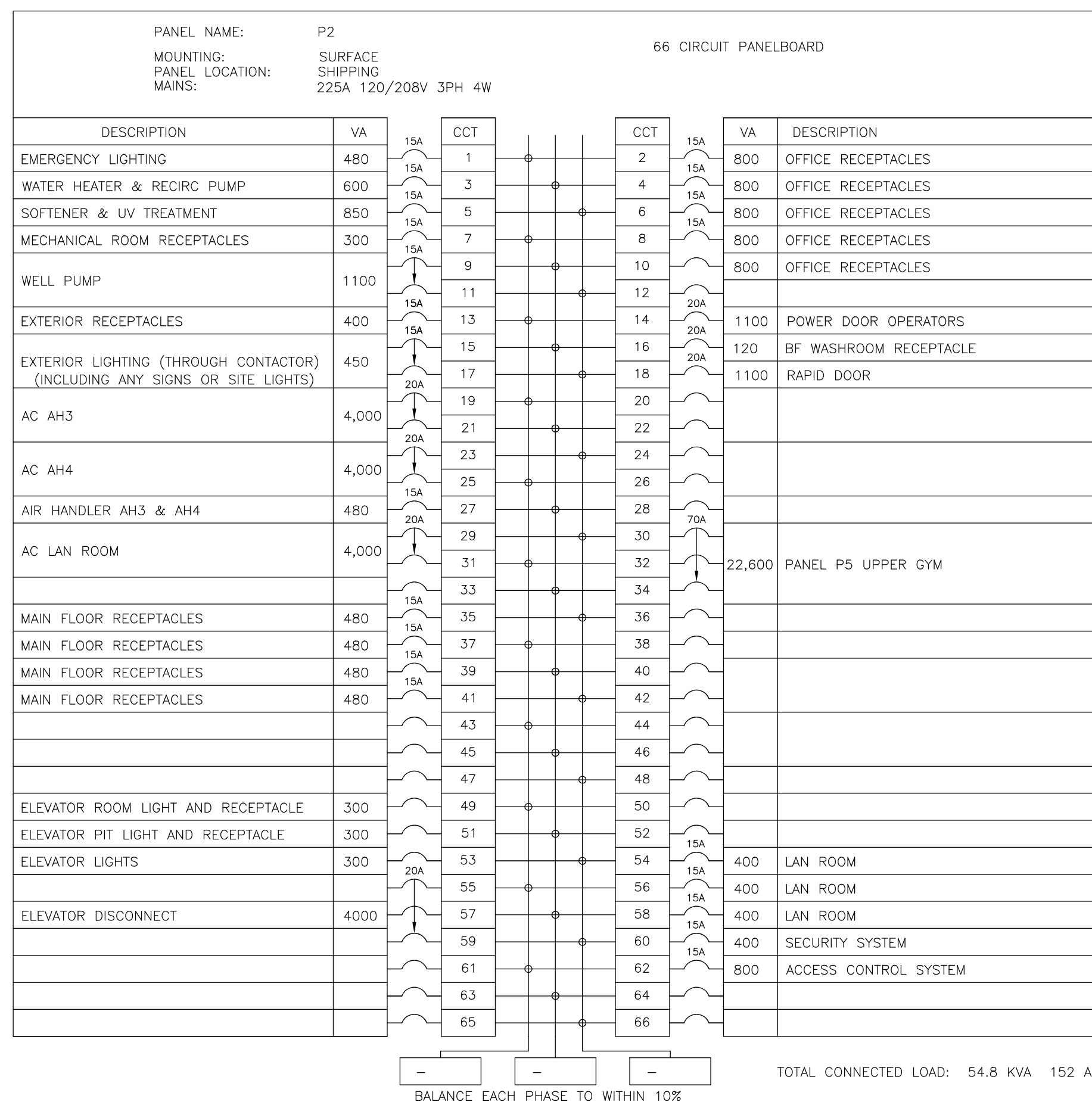
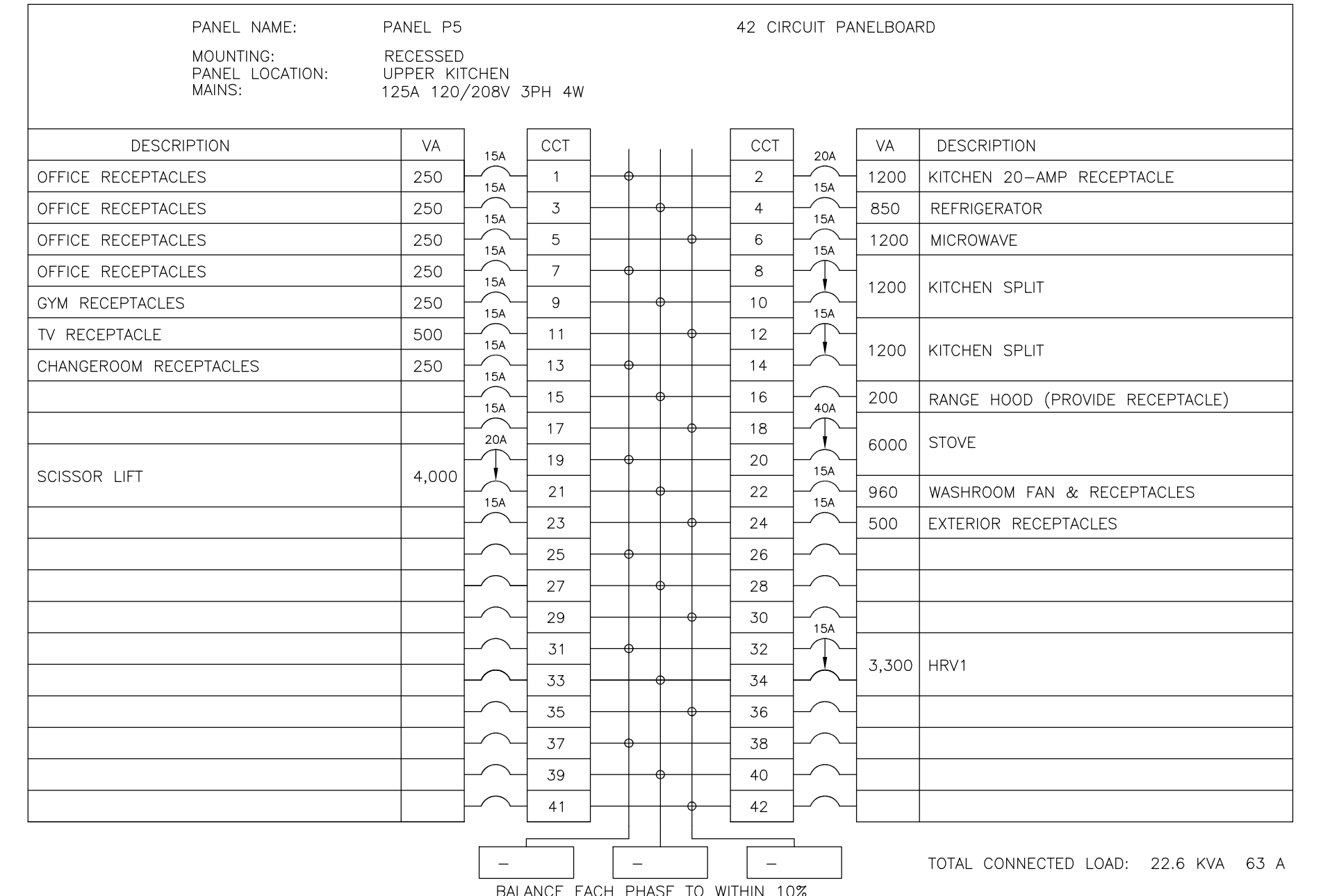
NO.	ISSUED FOR	DATE
2	ISSUED FOR PRICING	DEC 10/21
1	ISSUED FOR REVIEW	NOV 12/21
	REVISIONS	DATE

 7-182 KING STREET STRATFORD, ON N5A 4S1 PH: 519.271.0808 nfrengineering.ca	APPROVED BY: <b>DRAFT</b> DEC 10/21	PROJECT: <b>0507 INDUSTRIES LTD.          PROPOSED NEW FACILITY</b> 8 EASY STREET PORT PERRY, ONTARIO	DRAWING TITLE: <b>ELECTRICAL NOTES AND SCHEDULES</b> SCALE: - PROJECT NO.: 21016 DRAWN: NC DRAWING: E1.1 CHECKED: NC
	© COPYRIGHT 2021 NFR ENGINEERING LTD. NO UNAUTHORIZED USE, AUTHORIZED USE BY WRITTEN CONSENT ONLY		



**NOTES**

1. THIS DRAWING IS 24X36. CAUTION WHEN SCALING FROM PRINTED DRAWINGS.
2. ALL DIMENSIONS ARE TO BE CHECKED ON SITE.
3. ALL DRAWINGS REMAIN THE PROPERTY OF NFR ENGINEERING LTD. AND SHALL NOT BE REPRODUCED OR REUSED WITHOUT WRITTEN PERMISSION.



NO.	ISSUED FOR PRICING	DATE
2	ISSUED FOR PRICING	DEC 10/21
1	ISSUED FOR REVIEW	NOV 12/21
	REVISIONS	DATE

**NFR ENGINEERING**  
7-182 KING STREET STRATFORD, ON N5A 4S1 PH: 519.271.0808  
nfrengineering.ca

© COPYRIGHT 2021 NFR ENGINEERING LTD. NO UNAUTHORIZED USE, AUTHORIZED USE BY WRITTEN CONSENT ONLY

APPROVED BY:  
**DRAFT**  
DEC 10/21

PROJECT:  
**0507 INDUSTRIES LTD. PROPOSED NEW FACILITY**

8 EASY STREET  
PORT PERRY, ONTARIO

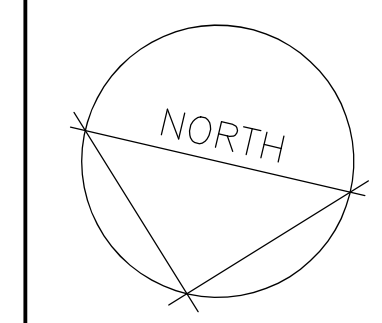
DRAWING TITLE:  
**ELECTRICAL PANELS**

SCALE: - PROJECT NO.: 21016

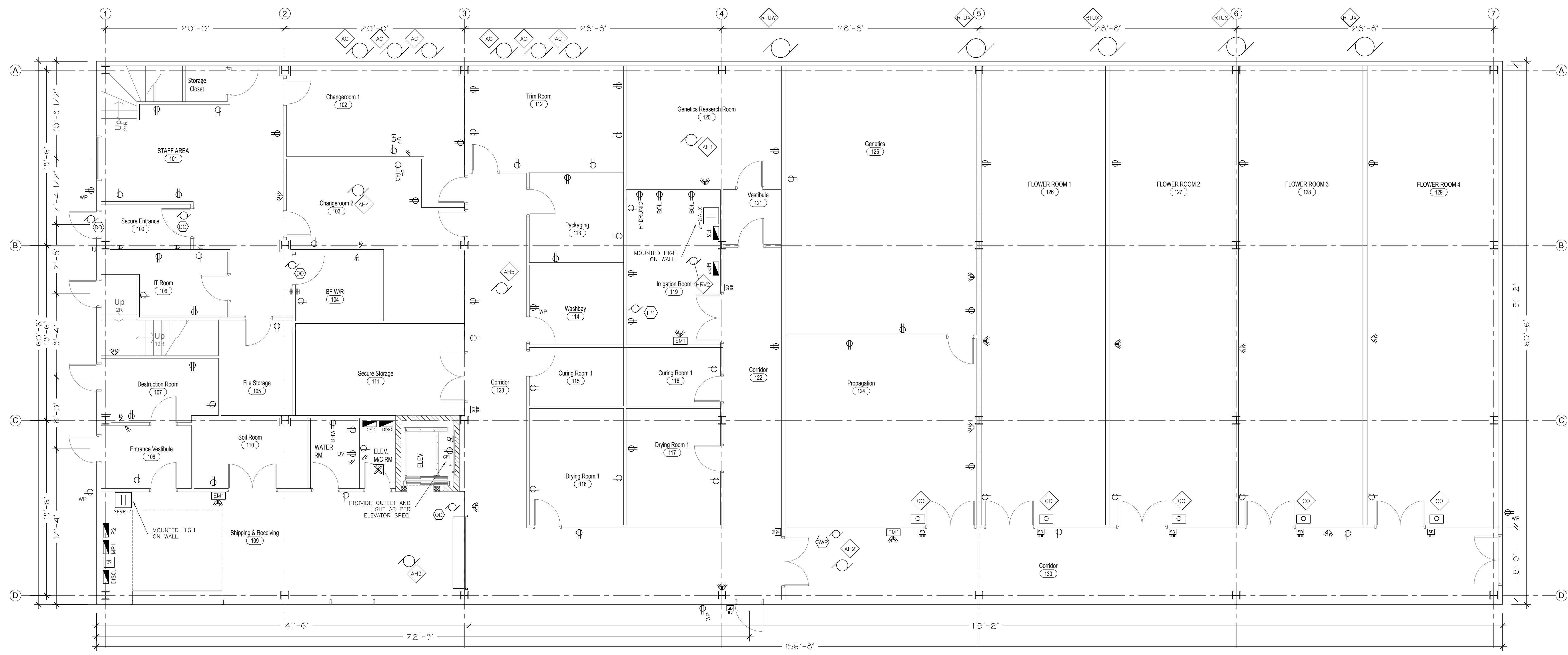
DRAWN: NC DRAWING: E1.2

CHECKED: NC





- NOTES**
1. THIS DRAWING IS 24X36. CAUTION WHEN SCALING FROM PRINTED DRAWINGS.
  2. ALL DIMENSIONS ARE TO BE CHECKED ON SITE.
  3. ALL DRAWINGS REMAIN THE PROPERTY OF NFR ENGINEERING LTD. AND SHALL NOT BE REPRODUCED OR REUSED WITHOUT WRITTEN PERMISSION.



**Main Floor Plan**

NO.	REVISIONS	DATE
2	ISSUED FOR PRICING	DEC 10/21
1	ISSUED FOR REVIEW	NOV 12/21

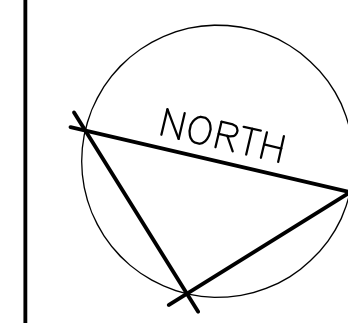
**NFR ENGINEERING**  
 7-182 KING STREET  
 STRATFORD, ON  
 N5A 4S1  
 PH: 519.271.0808  
 nfrengineering.ca

APPROVED BY:  
**DRAFT**  
 DEC 10/21

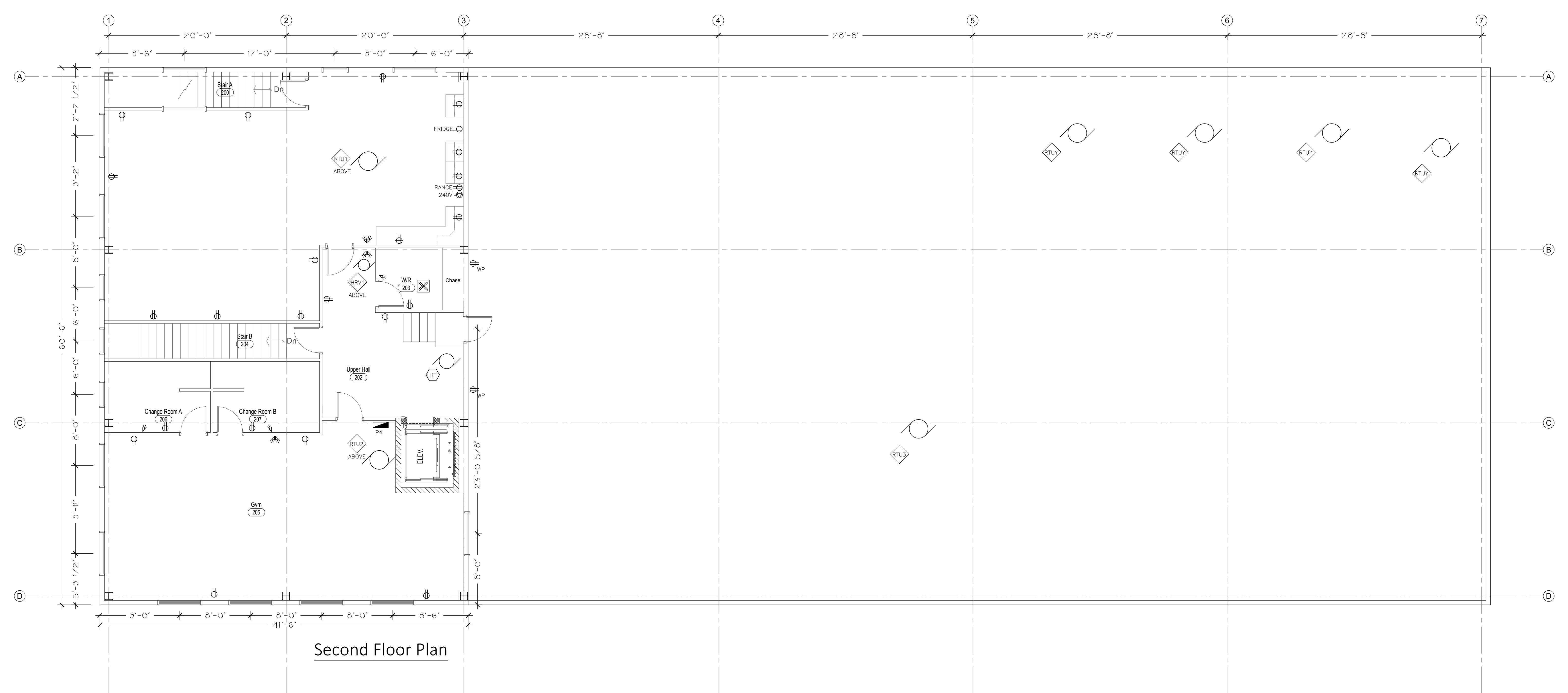
PROJECT:  
**0507 INDUSTRIES LTD.  
 PROPOSED NEW FACILITY**

8 EASY STREET  
 PORT PERRY, ONTARIO

DRAWING TITLE: <b>ELECTRICAL LAYOUT MAIN FLOOR</b>	
SCALE: 3/16" = 1'-0"	PROJECT NO.: 21016
DRAWN: NC	DRAWING: E2
CHECKED: NC	



- NOTES**
1. THIS DRAWING IS 24X36. CAUTION WHEN SCALING FROM PRINTED DRAWINGS.
  2. ALL DIMENSIONS ARE TO BE CHECKED ON SITE.
  3. ALL DRAWINGS REMAIN THE PROPERTY OF NFR ENGINEERING LTD. AND SHALL NOT BE REPRODUCED OR REUSED WITHOUT WRITTEN PERMISSION.



Second Floor Plan

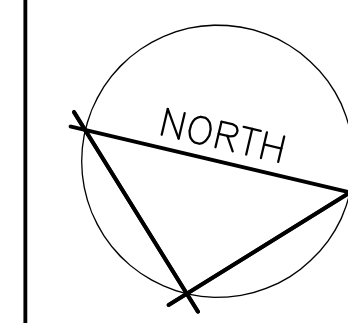
NO.	REVISIONS	DATE
2	ISSUED FOR PRICING	DEC 10/21
1	ISSUED FOR REVIEW	NOV 12/21

**NFR ENGINEERING**  
 7-182 KING STREET  
 STRATFORD, ON  
 N5A 4S1  
 PH: 519.271.0808  
 nfrengineering.ca

APPROVED BY:  
**DRAFT**  
 DEC 10/21

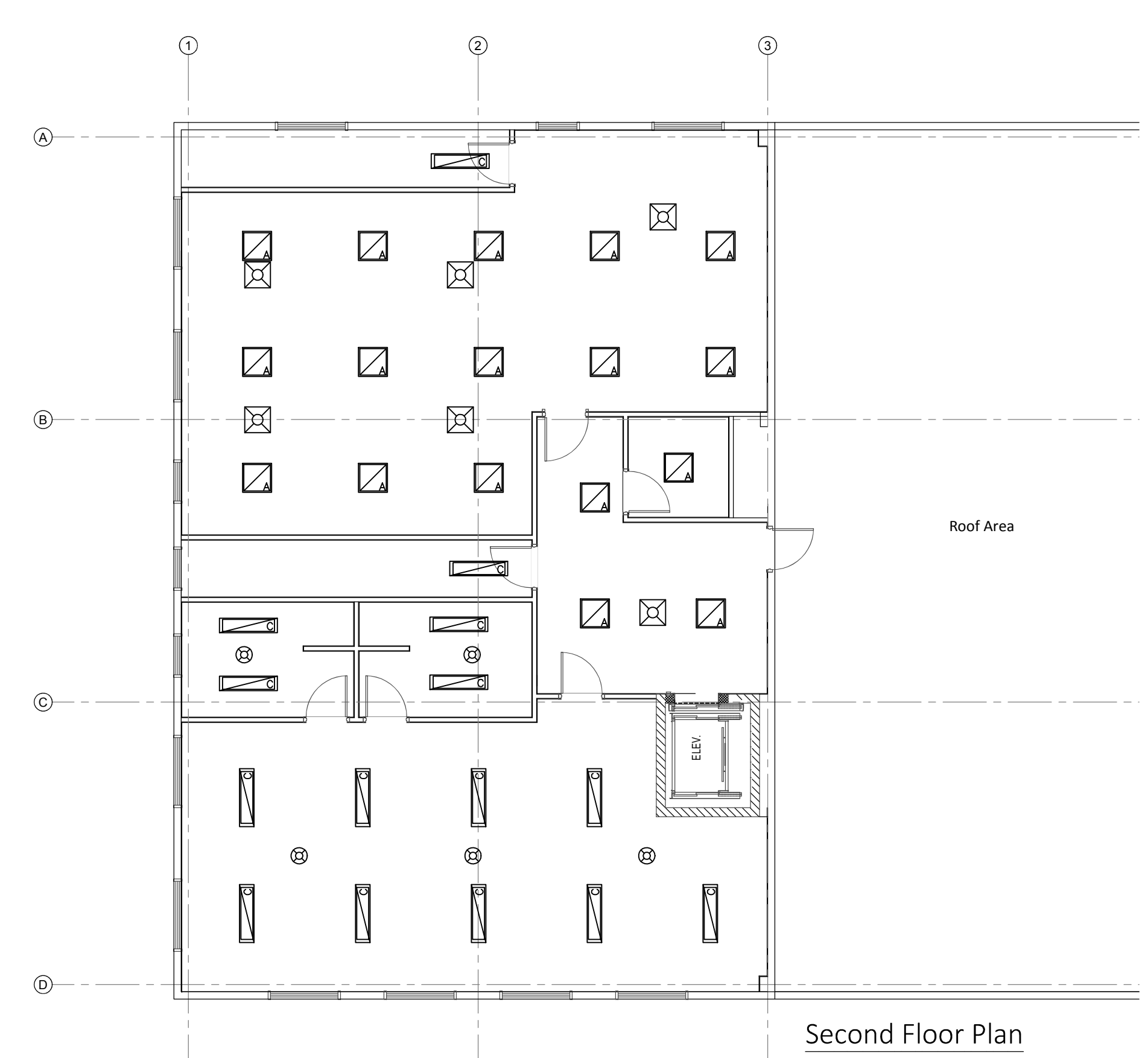
PROJECT:  
**0507 INDUSTRIES LTD.  
 PROPOSED NEW FACILITY**  
 8 EASY STREET  
 PORT PERRY, ONTARIO

DRAWING TITLE: <b>ELECTRICAL LAYOUT SECOND FLOOR</b>	
SCALE: 3/16" = 1'-0"	PROJECT NO.: 21016
DRAWN: NC	DRAWING: <b>E3</b>
CHECKED: NC	



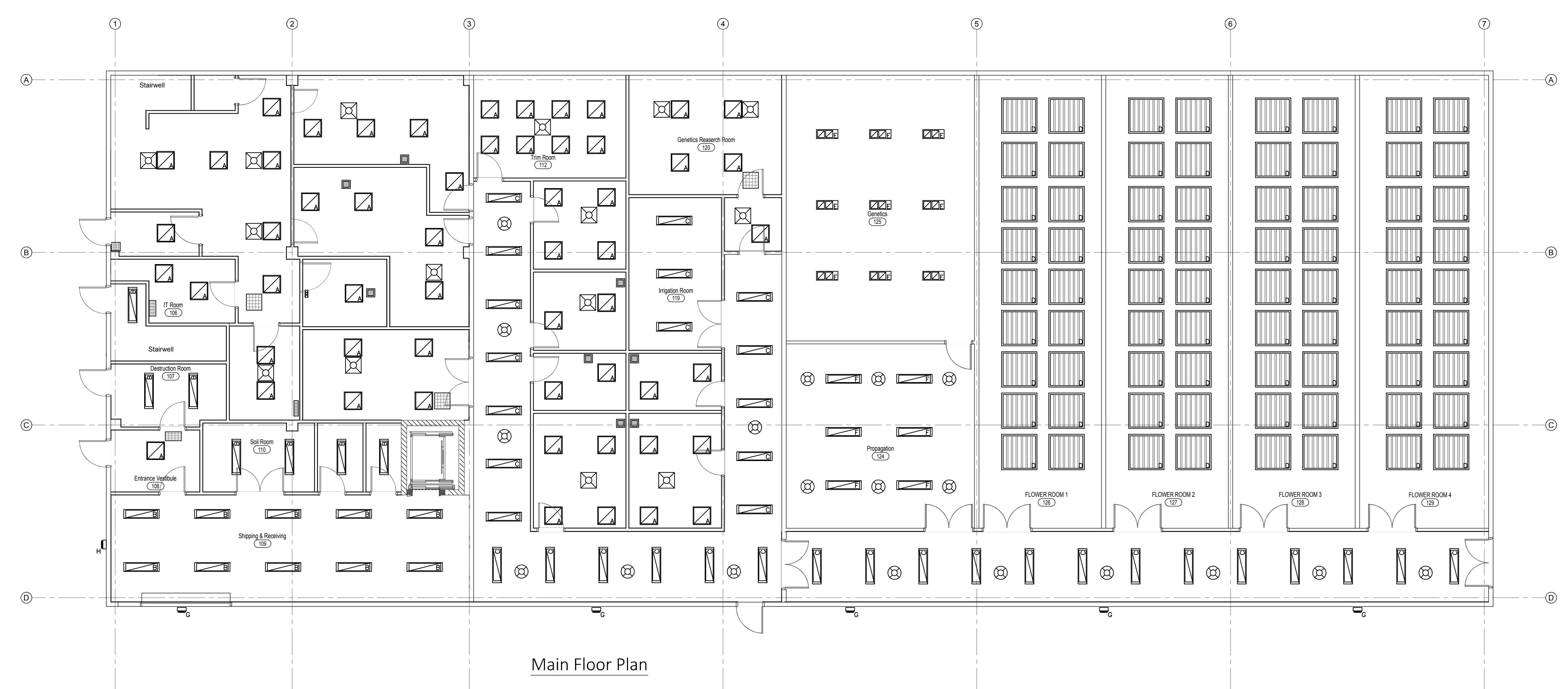
**NOTES**

1. THIS DRAWING IS 24X36. CAUTION WHEN SCALING FROM PRINTED DRAWINGS.
2. ALL DIMENSIONS ARE TO BE CHECKED ON SITE.
3. ALL DRAWINGS REMAIN THE PROPERTY OF NFR ENGINEERING LTD. AND SHALL NOT BE REPRODUCED OR REUSED WITHOUT WRITTEN PERMISSION.



LUMINAIRE SCHEDULE						
ITEM	DESCRIPTION	VOLT	WATT	BULB	MOUNTING	CATALOGUE OR DESCRIPTION
A	2x2 FLAT PANEL	347V	30W	LED	RECESSED	TUROLIGHT RGD-BLP2 4000K MULTI
B	1'x4' UTILITY STRIP	347V	48W	LED	SURFACE	TUROLIGHT DL-WA5 4' 4000K DIMMABLE
C	1'x4' UTILITY STRIP	347V	48W	LED	SUSPENDED	TUROLIGHT DL-WA5 4' 4000K DIMMABLE
D	LED GROW LIGHT	240V	645W	LED	SUSPENDED	FIXTURE BY OWNER. INSTALL AND CONNECT AS REQUIRED.
E	LED GROW LIGHT	240V	780W	LED	SUSPENDED	FIXTURE BY OWNER. INSTALL AND CONNECT AS REQUIRED.
F	LED STRIP GROW LIGHT	347V	336W	LED	SUSPENDED	HotLED TOP 2.0, DAYLIGHT SPEC.
G	EXTERIOR BUILDING LIGHT	120V	70W	LED	SURFACE	TUROLIGHT SSL-WP1 4000K W/ PHOTOCCELL
H	EXTERIOR BUILDING LIGHT	120V	70W	LED	SURFACE	TUROLIGHT SSL-WP3S FULL CUTOFF 4000K W/ PHOTOCCELL
EM1	EMERG. HEADS W/ 12V BATT.	120V	36W <sup>1</sup>	LED	SURFACE	AIMLITE EBST-2L BATTERY PACK W/ TWO PAR18 2W LED HEADS
EM2	EXTRA HEADS (MATCH ABOVE)	12V	3W	LED	SURFACE	PAR18 2W, CONNECT TO EM1

NOTE: ALL FIXTURES AND SWITCHING TO BE DETERMINED AND/OR APPROVED BY OWNER  
 1. 36W BATTERY SIZE SUITABLE FOR 24 X 3W HEADS FOR 30 MINUTE RUN TIME.  
 2. EXTERIOR LIGHT CIRCUIT TO BE THROUGH SEPARATE PHOTOSENSOR AND MANUAL SWITCHES.



NO.	REVISIONS	DATE
2	ISSUED FOR PRICING	DEC 10/21
1	ISSUED FOR REVIEW	NOV 12/21

**NFR ENGINEERING**  
 7-182 KING STREET  
 STRATFORD, ON  
 N5A 4S1  
 PH: 519.271.0808  
 nfrengineering.ca

© COPYRIGHT 2021 NFR ENGINEERING LTD.  
 NO UNAUTHORIZED USE, AUTHORIZED USE BY WRITTEN CONSENT ONLY

APPROVED BY:  
**DRAFT**  
 DEC 10/21

PROJECT:  
**0507 INDUSTRIES LTD.  
 PROPOSED NEW FACILITY**

8 EASY STREET  
 PORT PERRY, ONTARIO

DRAWING TITLE:  
**LIGHTING LAYOUT**

SCALE: 1/8" = 1'-0"

DRAWN: NC  
 CHECKED: NC

PROJECT NO.: 21016  
**E4**