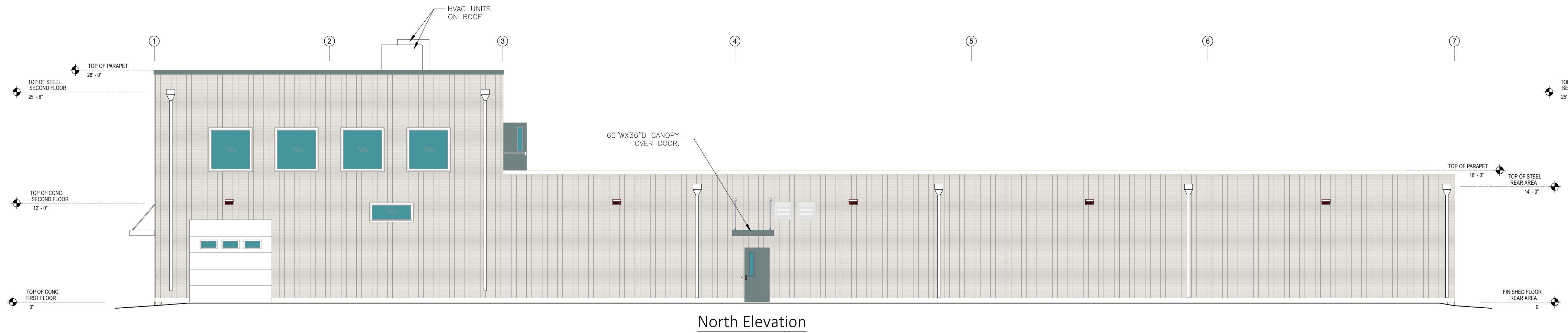


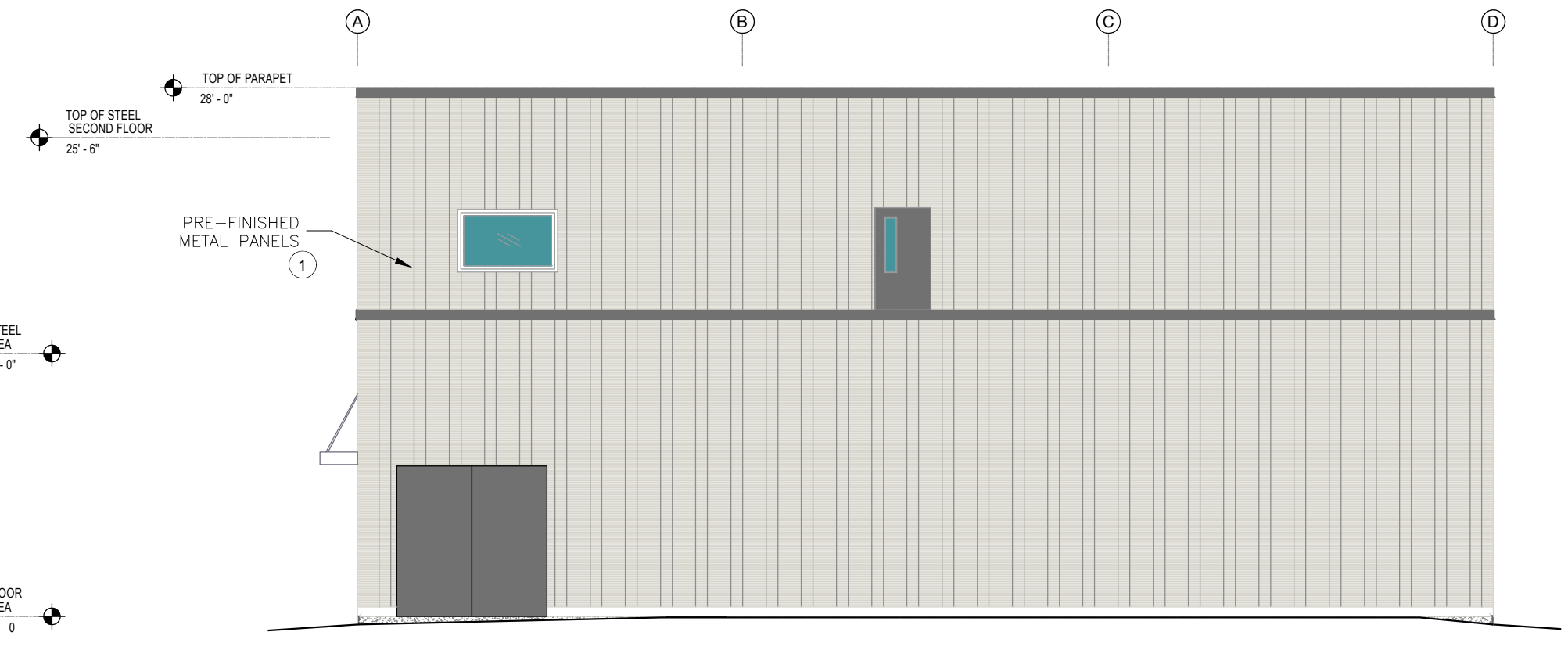
FINISH SCHEDULE	
1	<ul style="list-style-type: none"> <li>EXTERIOR RIBBED METAL PANEL (IMP)</li> <li>RAL 9002 GREY WHITE COLOUR</li> </ul>
2	<ul style="list-style-type: none"> <li>EXTERIOR FAUX STONE VENEER SIDING</li> <li>NATURAL LOOK - CHARCOAL GREY</li> </ul>
3	<ul style="list-style-type: none"> <li>FRASER WOOD SIDING - CLASSIC NEO 1X8" HORIZONTAL BOARD</li> <li>SPRUCE BLUE SOLID COLOUR STAIN</li> </ul>
4	<ul style="list-style-type: none"> <li>10" HORIZONTAL FREEZE BOARD</li> <li>SPRUCE BLUE SOLID COLOUR STAIN</li> <li>TO BE 2-1/8" THICK</li> </ul>
5	<ul style="list-style-type: none"> <li>PRE-FINISHED ALUMINUM TRIM &amp; DOWNSPOUTS TO BE SLATE GREY</li> <li>EXTERIOR DOORS TO BE SLATE GREY</li> </ul>

**NOTES**

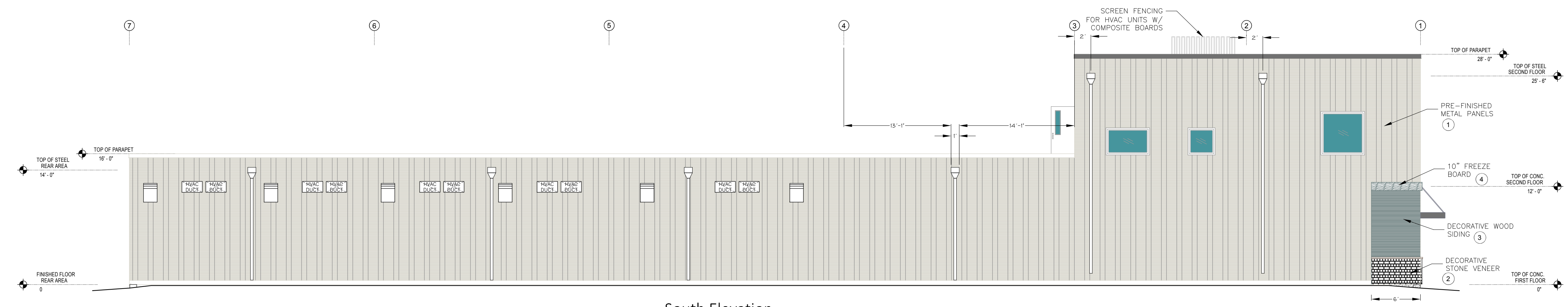
- THIS DRAWING IS 24X36. CAUTION WHEN SCALING FROM PRINTED DRAWINGS.
- ALL DIMENSIONS ARE TO BE CHECKED ON SITE.
- ALL DRAWINGS REMAIN THE PROPERTY OF NFR ENGINEERING LTD. AND SHALL NOT BE REPRODUCED OR REUSED WITHOUT WRITTEN PERMISSION.



North Elevation



West Elevation



South Elevation



East Elevation

NO.	REVISIONS	DATE
5	ISSUED FOR PERMIT	APR 15/24
4	REVISE FOR STEEL STRUCTURE	AUG 11/23
3	REVISE ELEVATION VIEW FOR SITE PLAN	MAY 5/23
2	ISSUED FOR PRICING	DEC 10/21
1	ISSUED FOR REVIEW	NOV 12/21

**NFR ENGINEERING**  
 7-182 KING STREET STRATFORD, ON N5A 4S1  
 PH: 519.271.0808  
 nfrengineering.ca

APPROVED BY: \_\_\_\_\_  
 PROJECT: 0507 INDUSTRIES LTD. PROPOSED NEW FACILITY

8 EASY STREET  
 PORT PERRY, ONTARIO

DRAWING TITLE: ELEVATION VIEWS	
SCALE: 1/8" = 1'-0"	PROJECT NO.: 21016
DRAWN: NC	DRAWING: AX1
CHECKED: NC	