

GENERAL

1. ALL MATERIALS AND WORKMANSHIP SHALL CONFORM TO THE LATEST EDITION OF ALL RELEVANT CODES AND STANDARDS.
2. CONFORM TO OWNER'S GENERAL SPECIFICATIONS INCLUDING ALL SAFETY REQUIREMENTS.
3. SITE VERIFY ALL DIMENSIONS AND LEVELS.
4. KEEP THE SITE THROUGHOUT THE WORK AREA IN A CLEAN AND ORDERLY CONDITION AT ALL TIMES TO THE SATISFACTION OF THE OWNER.

DEMOLITION NOTES

1. PROVIDE PROTECTION AS REQUIRED TO PREVENT DAMAGE TO THE EXISTING STRUCTURE AND/OR ADJACENT EQUIPMENT. PROTECT ALL EXISTING FINISHES, FRAMES AND PROPERTY.
2. SAW CUT, REMOVE AND DISPOSE OF EXISTING DEMOLISHED MATERIALS OFF-SITE, AS REQUIRED TO COMPLETE THE WORK.
3. KEEP THE WORK AND STAGING AREAS CLEAN AND ORDERLY AT ALL TIMES AND FREE FROM RUBBLE AND DEBRIS.
4. NOTIFY CONSULTANT OF ANY LOAD BEARING MEMBERS OR ASSEMBLIES DISCOVERED OR IDENTIFIED DURING WORK WITH EXCESSIVE DETERIORATION BEYOND WHAT IS NOT INDICATED ON THE DRAWINGS. DO NOT PROCEED WITH REMOVAL WITHOUT PRIOR REVIEW BY THE CONSULTING STRUCTURAL ENGINEER.
5. ALL BUILDING MATERIALS TO BE REMOVED FROM THE BUILDING SHALL BECOME THE PROPERTY OF THE CONTRACTOR UNLESS SPECIFIED OTHERWISE AND SHALL BE REMOVED FROM THE SITE.
6. COVER ALL LOADED TRUCKS LEAVING THE DEMOLITION SITE.
7. CONTRACTOR SHALL KEEP CLEAR AND NOT INHIBIT THE USE OF BUILDING FIRE ROUTE AND ALL HYDRANTS DURING THE ENTIRE DEMOLITION WORK.
8. REPORT ANY DOUBTFUL UNFORESEEN AND/OR UNEXPECTED SITE CONDITIONS TO THE ENGINEER PRIOR TO PROCEEDING.

TEMPORARY WORKS

1. THE CONTRACTOR SHALL DESIGN, PROVIDE, ERECT, MAINTAIN REMOVE AND ASSUME FULL AND SOLE RESPONSIBILITY FOR ALL TEMPORARY WORKS REQUIRED FOR THE SAFE AND COMPLETE EXECUTION OF THE WORKS.
2. IN THE EXECUTION OF THE TEMPORARY WORKS AND FOR THE DURATION OF THE CONTRACT, THE CONTRACTOR SHALL MAKE ADEQUATE PROVISION FOR ALL LIKELY CONSTRUCTION LOADINGS AND PROVIDE SUFFICIENT BRACING AND PROPS TO KEEP THE WORKS IN PLUMB AND ALIGNMENT AND FREE FROM EXCESSIVE DEFLECTION.
3. ACCESS OF HEAVY CONSTRUCTION EQUIPMENT AND ACCUMULATION OF CONSTRUCTION MATERIALS ON THE FLOORS ARE NOT PERMITTED, UNLESS SUCH HAVE BEEN CATERED FOR IN THE CONTRACTOR'S TEMPORARY WORK DESIGN TO THE SATISFACTION OF THE ARCHITECT.
4. SUBMIT SHOP DRAWINGS FOR ALL TEMPORARY WORKS FOR REVIEW BEFORE FABRICATION COMMENCES. SHOP DRAWINGS SHALL BE SEALED BY A PROFESSIONAL ENGINEER REGISTERED IN THE PROVINCE OF ONTARIO. DEMOLITION SHALL NOT PROCEED WITHOUT FORMAL BBA REVIEW AND APPROVAL OF ENGINEERED TEMPORARY WORKS SHOP DRAWINGS.
5. TEMPORARY WORKS ENGINEER IS RESPONSIBLE FOR DETERMINING THE DESIGN GRAVITY AND UPLIFT FORCES AND SELECTION/DESIGN OF AN APPROPRIATE TEMPORARY SUPPORT SYSTEM.

STRUCTURAL STEEL

1. ALL STRUCTURAL STEEL HSS AND W SECTIONS TO BE G40.21M-350W CLASS C. ALL OTHERS TO BE G40.21M-300W.
2. DESIGN FORCES INDICATED ON DRAWINGS FOR STRUCTURAL STEEL WORK ARE UN-FACTORED FORCES UNLESS NOTED OTHERWISE.
3. ALL CONNECTIONS TO BE DESIGNED BY FABRICATOR UNLESS NOTED OTHERWISE. ALL BEAM CONNECTIONS TO BE STANDARD SHEAR CONNECTIONS IN COMPLIANCE WITH CSC, UNLESS NOTED OTHERWISE.
4. PROVIDE SHOP DRAWINGS OF COMPONENTS AND CONNECTIONS DESIGNED BY THE FABRICATOR'S ENGINEER. DRAWINGS SHALL BE SIGNED AND SEALED BY THAT ENGINEER.
5. FABRICATOR'S ENGINEER MUST BE LICENSED IN THE PROVINCE OF ONTARIO.
6. ALL ERECTION BOLTS SHALL BE ASTM GRADE A325 MINIMUM, AND SHALL BE DESIGNED BY STEEL FABRICATOR'S ENGINEER FOR TRANSFER OF ALL LOADS.
7. BOLTED CONNECTIONS SHALL HAVE A MINIMUM OF TWO BOLTS IN EACH CONNECTION PIECE AND DESIGNED AS BEARING CONNECTIONS U.L.O.
8. FABRICATION, ERECTION AND WORKMANSHIP SHALL CONFORM TO CSA S16.1.
9. ALL WELDING SHALL CONFORM TO CSA W59 AND SHALL BE PERFORMED BY A WELDER QUALIFIED UNDER CSA W47.
10. ALL STRUCTURAL STEEL SHALL BE PAINTED WITH ONE SHOP APPLIED COAT OF PRIMER. SPOT PRIME ALL WELDED AREAS.
11. REMOVE PAINT FILM FROM ALL STEEL SURFACES TO BE WELDED. SPOT PRIME AS REQUIRED.
12. ALL WELDED CONNECTIONS SHALL BE WITH CSA W48 SERIES ELECTRODES.
13. PROVIDE DRAINAGE HOLES IN ALL HSS FRAMING.
14. DO NOT CUT OR CORE ANY OPENINGS IN ANY STRUCTURAL STEEL MEMBERS WITHOUT PRIOR APPROVAL FROM THE STRUCTURAL ENGINEER.
15. WHERE A STRUCTURAL STEEL SHAPE SHOWN ON THE DRAWINGS IS UNAVAILABLE, A SHAPE OF EQUAL OR GREATER SECTION PROPERTIES AND STRUCTURAL CAPACITY SHALL BE SUBSTITUTED, UPON APPROVAL BY OWNER AND CONSULTANT AT NO EXTRA COST.

CONCRETE

1. CONCRETE CONSTRUCTION SHALL CONFORM TO THE LATEST EDITION OF CAN/CSA-A23.1 AND CAN/CSA-A23.3 WITH THE FOLLOWING PROVISION:

LOCATION	DESIGN STRENGTH (28 DAYS)	SLUMP	EXPOSURE CLASS
EXTERIOR FOOTINGS/ FOUNDATION WALLS AND PIERS	25 MPa	80± 30	F-2
SLAB ON GRADE	35 MPa	80± 30	C-1

2. NO ADDITIONAL WATER SHALL BE ADDED AT THE JOB SITE. CONCRETE WHICH HAS BEEN WATERED OR DOES NOT MEET SPECIFICATIONS SHALL BE REJECTED.
3. DURING WINTER WEATHER BELOW 5 °C PROVIDE TEMPORARY HEATING OF CONCRETE IN ACCORDANCE WITH THE REQUIREMENTS OF CSA A23.1, LATEST EDITION.
4. STRUCTURAL GROUT SHALL BE NON-SHRINK, NON METALLIC M-BED STANDARD PREMIX BY SIKA OR APPROVED EQUAL.
5. WHEN PIPES, CONDUITS, OR SLEEVES ARE REQUIRED TO PENETRATE CONCRETE ASSEMBLIES, THE FOLLOWING SHALL BE OBSERVED:
 - SPACING OF SUCH ITEMS SHALL BE 3x DIAMETER C/C.
 - CONCRETE SHALL NOT BE PENETRATED WITHIN 600mm (24") OF CONCENTRATED LOADS.
 - ANY PENETRATIONS SHALL BE A MINIMUM OF 600mm (24") FROM ALL EDGES, SUCH AS ENDS AND TOPS OF WALLS.
 - FOR ANY PENETRATIONS GREATER THAN 300mm (12"), CONSULT THE ENGINEER FOR REVIEW AND DETERMINATION OF EXTRA REINFORCEMENT REQUIREMENTS.

CONCRETE REINFORCEMENT

1. THE CLEAR DISTANCE BETWEEN REINFORCING STEEL AND SURFACE OF CONCRETE SHALL BE AS FOLLOWS UNLESS NOTED OTHERWISE.

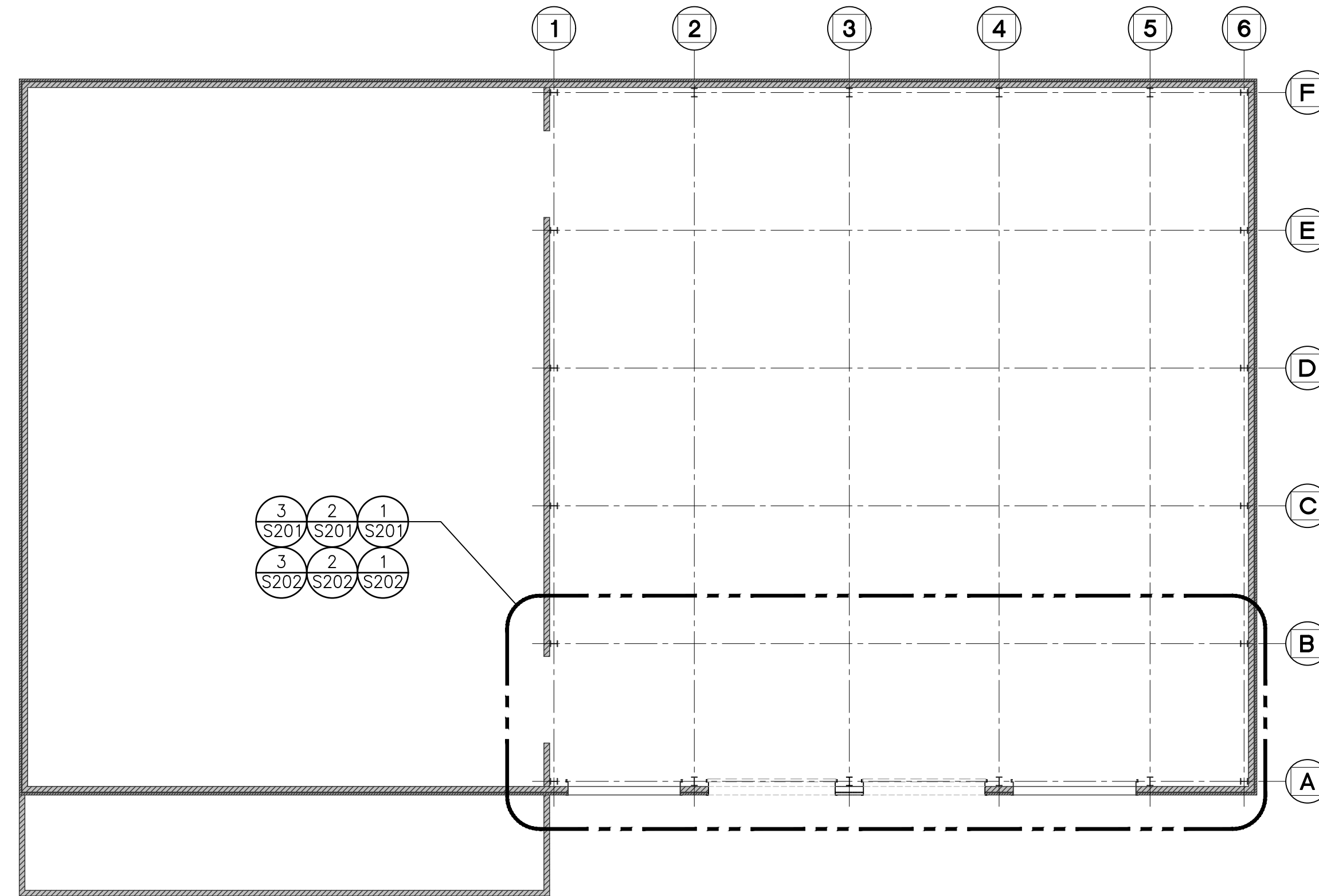
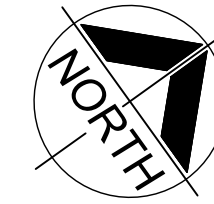
LOCATION	CLEAR COVER
FOOTINGS	75mm(3") UNDERSIDE 50mm(2") TOP AND ENDS
SLABS	25mm(1") TOP BARS 25mm(1") BOTTOM BARS
COLUMNS/PIERS	40mm(1½") TO TIES
SURFACE IN CONTACT WITH GROUND	75mm(3")

2. DETAIL REINFORCING STEEL IN ACCORDANCE WITH "REINFORCING STEEL MANUAL OF STANDARD PRACTICE" LATEST EDITION.
3. REINFORCING BAR SPLICES FOR DEFORMED BARS:
 - COLUMNS - COMPRESSION LAP UNLESS NOTED
 - WALLS - CLASS 'B' TENSION SPLICE UNLESS NOTED
 - ALL OTHERS - CLASS 'B' TENSION LAP UNLESS NOTED
4. ALL REINFORCING STEEL SHALL BE DEFORMED HARD GRADE BILLET STEEL CONFORMING TO CSA G30.18 GRADE 400.
5. ALL CONCRETE REINFORCEMENT MUST BE PROPERLY CHAIRED WITH APPROVED BAR SUPPORTS.
6. PROVIDE CHAIRS, SPACER BARS, SUPPORT BARS AND OTHER ACCESSORIES TO SUPPORT REINFORCING IN ACCORDANCE WITH THE LATEST EDITIONS OF CSA A23.1 AND CSA A23.3 CHAIRS TO BE PLASTIC, PLASTIC TIPPED OR CONCRETE. ALL TIE WIRE, CHAIRS AND BAR SUPPORTS USED FOR COATED REINFORCING SHALL BE NON-METALLIC OR PROTECTED WITH ACCEPTABLE COATING.
7. CHAIRS SHALL BE SPACED AT 1200mm(4'-0") O.C. MAXIMUM.

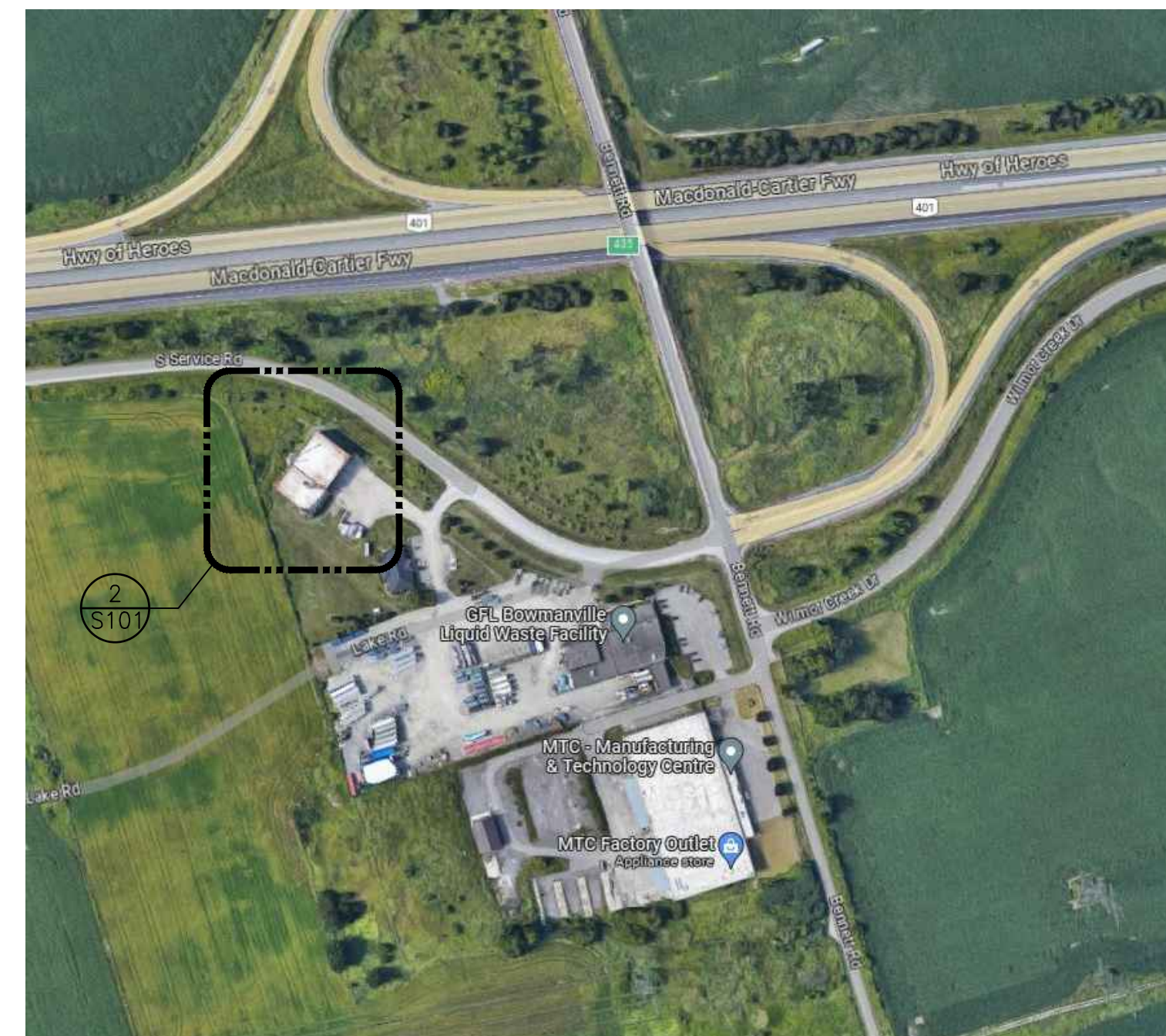
DESIGN LOADS

ROOF FRAMING:
 DEAD LOAD: 1.3 kPa
 SNOW LOAD: 1.52 kPa (S_s = 1.4 kPa; S_r = 0.4 kPa)
 WIND (UPLIFT): 1.70 kPa (q₀) = 0.48 kPa

OVERHEAD DOOR:
 TOTAL WEIGHT: 4,200 LBS.



2 PART GROUND FLOOR PLAN
S101 1:150



1 LOCATION PLAN
S101

DO NOT SCALE THE DRAWINGS.
 CHECK AND VERIFY ALL DIMENSIONS AT THE SITE.
 ALL DRAWINGS, SPECIFICATIONS AND RELATED DOCUMENTS ARE THE COPYRIGHT PROPERTY OF THE CONSULTANT AND MUST BE RETURNED UPON REQUEST. REPRODUCTION OF DRAWINGS IN PART OR WHOLE WITHOUT THE PERMISSION OF THE CONSULTANT IS FORBIDDEN.
 DRAWINGS ARE NOT TO BE USED FOR CONSTRUCTION UNTIL SIGNED AND SEALED BY THE CONSULTANT.



NO.	ISSUES	DATE	BY
1	ISSUED FOR PRICING	OCT. 27, 2023	BBA

NO.	REVISIONS	DATE	BY

PROJECT:
**STRUCTURAL MODIFICATIONS
 FOR NEW OVERHEAD DOOR**
 322 BENNETT RD, CLARINGTON, ON,
 L1C 3Z2

GFL ENVIRONMENTAL

DRAWING:
**GENERAL NOTES &
 LOCATION PLAN**



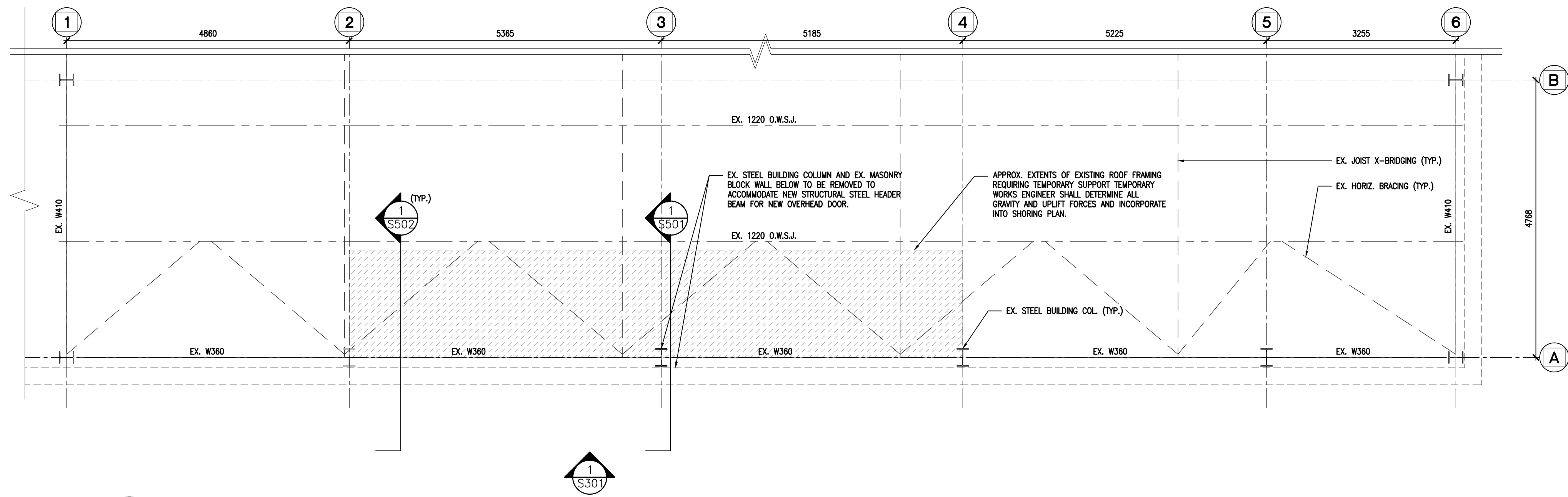
BARRY BRYAN
 ASSOCIATES

Architects
 Engineers
 Project Managers
 250 Water Street
 Suite 201
 Whitby, Ontario
 L1N 0G5
 Tel: (905) 866-5252
 Fax: (905) 866-5256
 e-mail: bba@bba-archeng.com

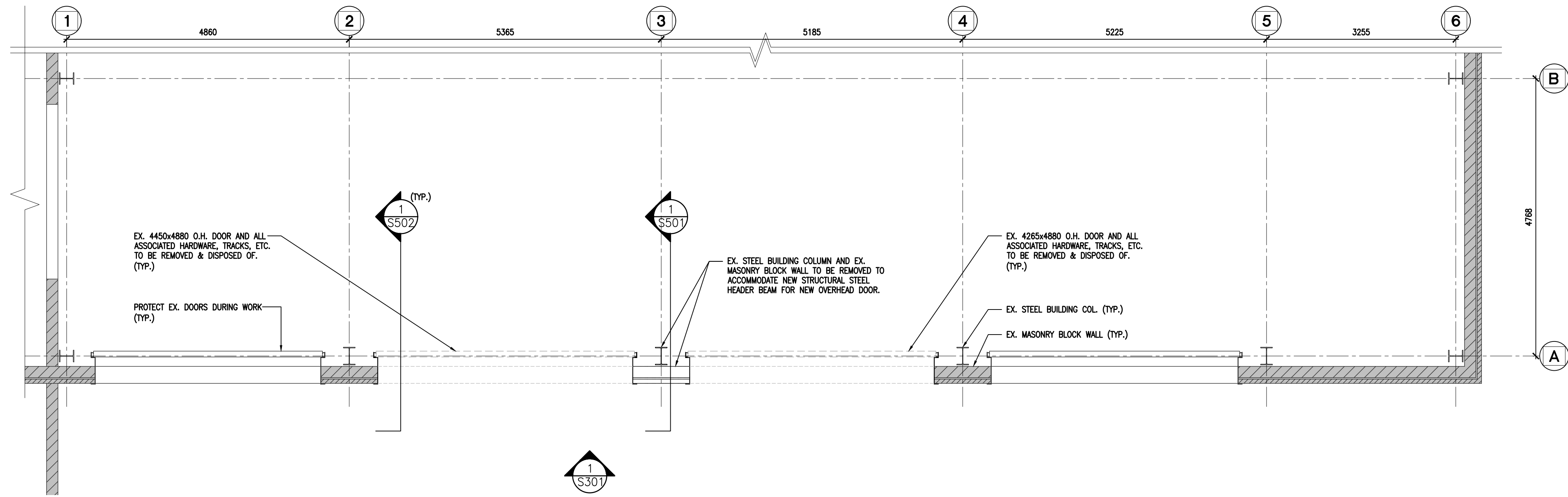
DESIGN BY: BK	SEC. CONTROL: DATE:
DRAWN BY: JMM	% COMPLETE
CHECKED BY: BK	INITIAL
DATE: AUGUST 2023	
SCALE: AS NOTED	
FILE:	

PROJECT NO:
23170

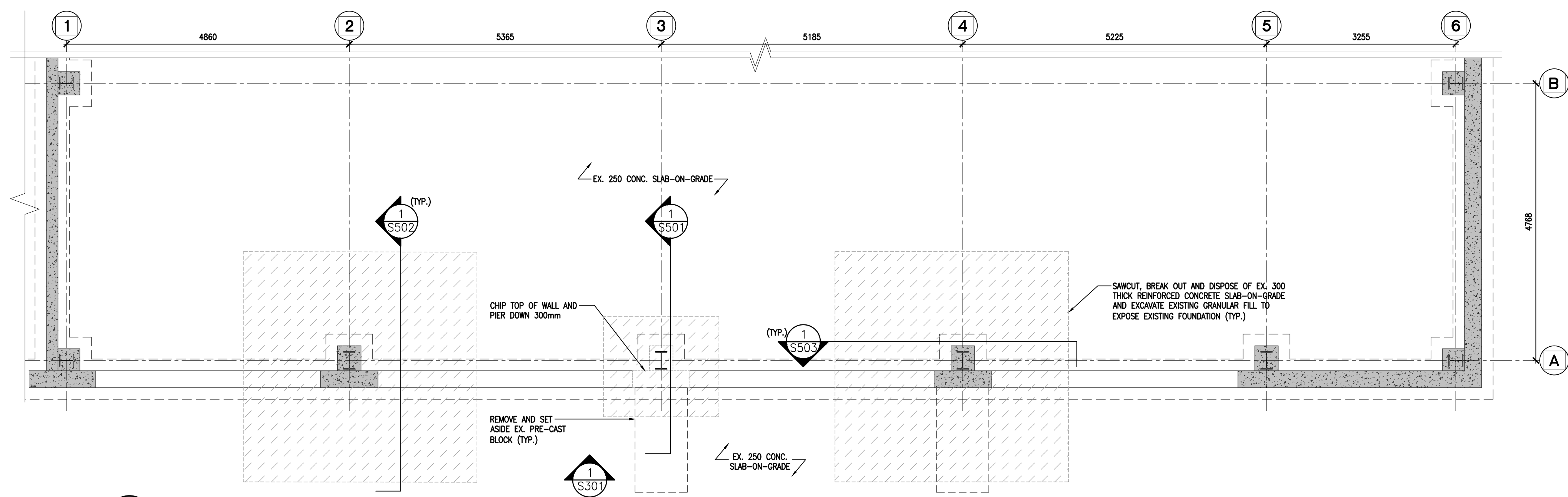
DRAWING NO:
S101



3 PART ROOF FRAMING DEMOLITION PLAN
S201 1:50



2 PART GROUND FLOOR DEMOLITION PLAN
S201 1:50



1 PART FOUNDATION DEMOLITION PLAN
S201 1:50

DO NOT SCALE THE DRAWINGS.
CHECK AND VERIFY ALL DIMENSIONS AT THE SITE.
ALL DRAWINGS, SPECIFICATIONS AND RELATED DOCUMENTS ARE THE COPYRIGHT PROPERTY OF THE CONSULTANT AND MUST BE RETURNED UPON REQUEST. REPRODUCTION OF DRAWINGS IN PART OR WHOLE WITHOUT THE PERMISSION OF THE CONSULTANT IS FORBIDDEN.
DRAWINGS ARE NOT TO BE USED FOR CONSTRUCTION UNTIL SIGNED AND SEALED BY THE CONSULTANT.



NO.	ISSUES	DATE	BY
1	ISSUED FOR PRICING	OCT. 27, 2023	BBA

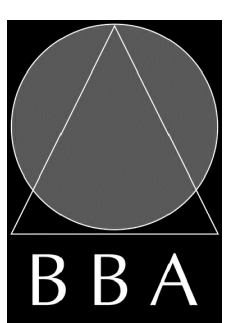
NO.	REVISIONS	DATE	BY

NO.	REVISIONS	DATE	BY

PROJECT:
STRUCTURAL MODIFICATIONS FOR NEW OVERHEAD DOOR
322 BENNETT RD, CLARINGTON, ON, L1C 3Z2

GFL ENVIRONMENTAL

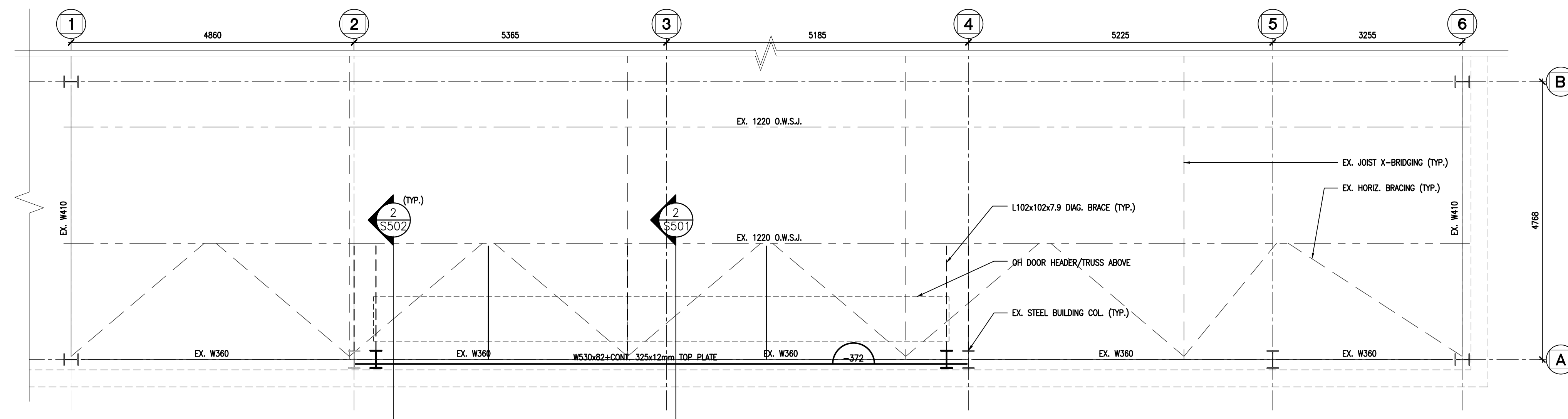
DRAWING:
ENLARGED PART DEMOLITION PLANS



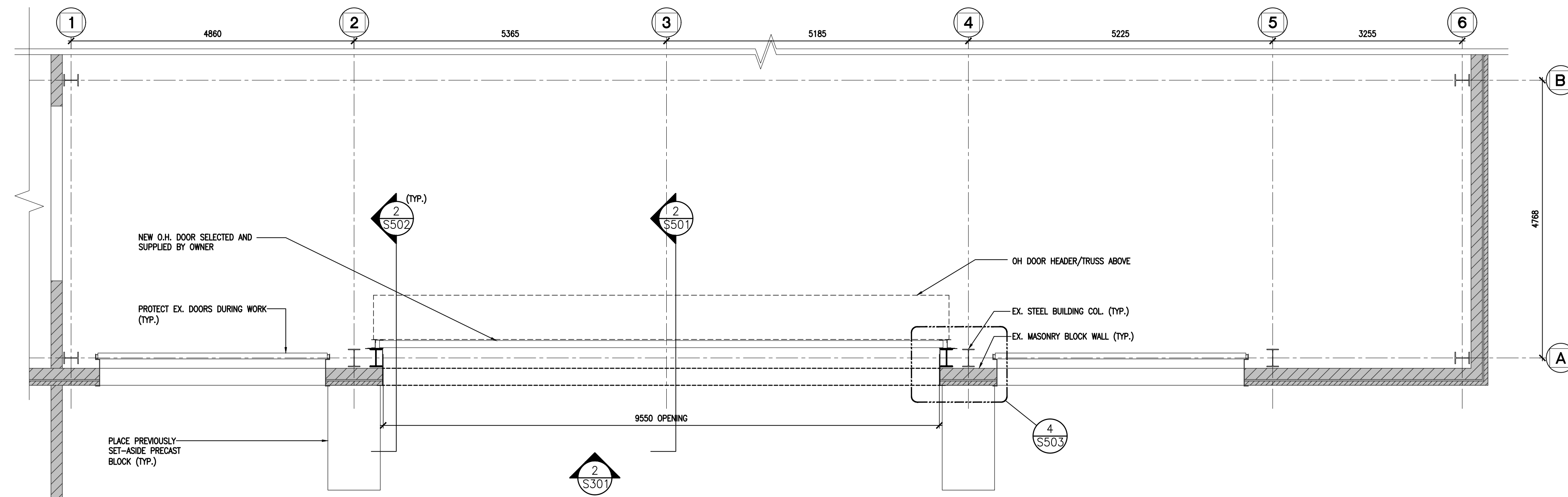
BARRY BRYAN ASSOCIATES
Architects
Engineers
Project Managers
250 Water Street
Suite 201
Whitby, Ontario
L1N 0G5
Tel: (905) 666-5252
Fax: (905) 666-5256
e-mail: bba@bbe-archeng.com

DESIGN BY: BK	DOC. CONTROL: PFC
DRAWN BY: JMM	% COMPLETE
CHECKED BY: BK	INITIAL
DATE: AUGUST 2023	SCALE: AS NOTED
FILE:	

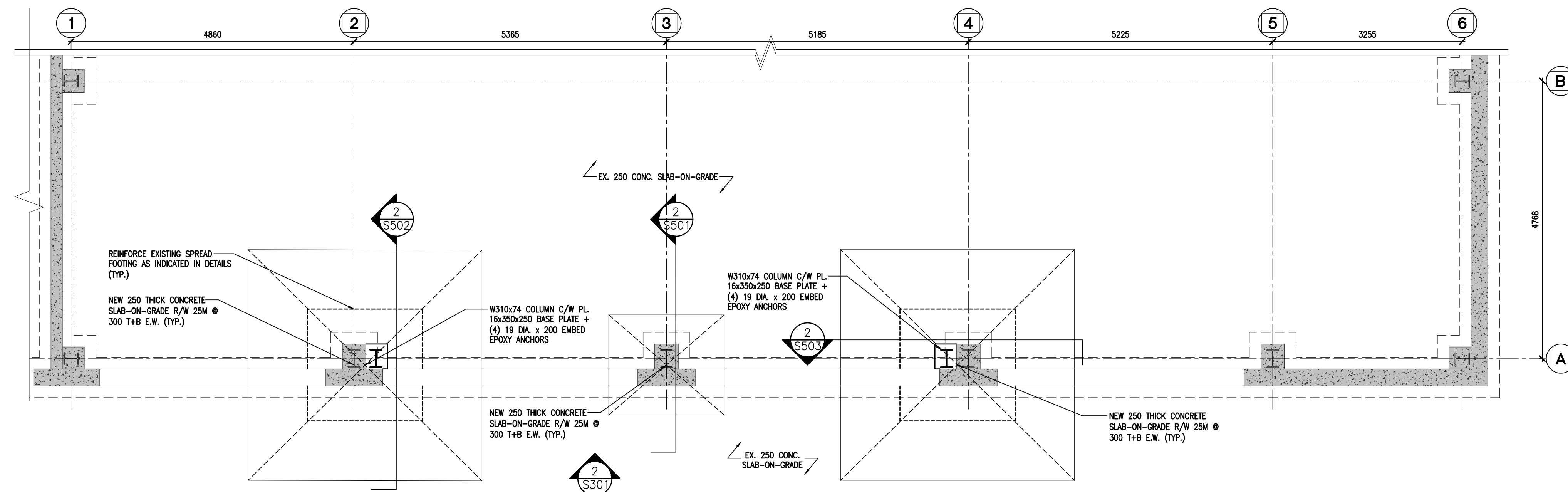
PROJECT NO: **23170** DRAWING NO: **S201**



3 PART ROOF FRAMING PLAN
S202 1:50



2 PART GROUND FLOOR PLAN
S202 1:50



1 PART FOUNDATION PLAN
S202 1:50

DO NOT SCALE THE DRAWINGS.
CHECK AND VERIFY ALL DIMENSIONS AT THE SITE.
ALL DRAWINGS, SPECIFICATIONS AND RELATED DOCUMENTS ARE THE COPYRIGHT PROPERTY OF THE CONSULTANT AND MUST BE RETURNED UPON REQUEST. REPRODUCTION OF DRAWINGS IN PART OR WHOLE WITHOUT THE PERMISSION OF THE CONSULTANT IS FORBIDDEN.
DRAWINGS ARE NOT TO BE USED FOR CONSTRUCTION UNTIL SIGNED AND SEALED BY THE CONSULTANT.



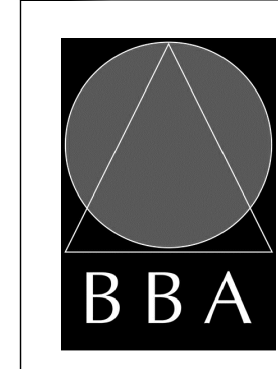
NO.	ISSUES	DATE	BY
1	ISSUED FOR PRICING	OCT. 27, 2023	BBA

NO.	REVISIONS	DATE	BY

PROJECT:
STRUCTURAL MODIFICATIONS FOR NEW OVERHEAD DOOR
322 BENNETT RD, CLARINGTON, ON, L1C 3Z2

GFL ENVIRONMENTAL

DRAWING:
ENLARGED PART PLANS



BARRY BRYAN ASSOCIATES
Architects
Engineers
Project Managers
250 Water Street
Suite 201
Whitby, Ontario
L1N 0G5
Tel: (905) 666-5252
Fax: (905) 666-5250
e-mail: bba@bba-archeng.com

DESIGN BY: BK	DOC. CONTROL: DATE:
DRAWN BY: JMM	% COMPLETE:
CHECKED BY: BK	INITIAL:
DATE: AUGUST 2023	SCALE: AS NOTED
FILE:	

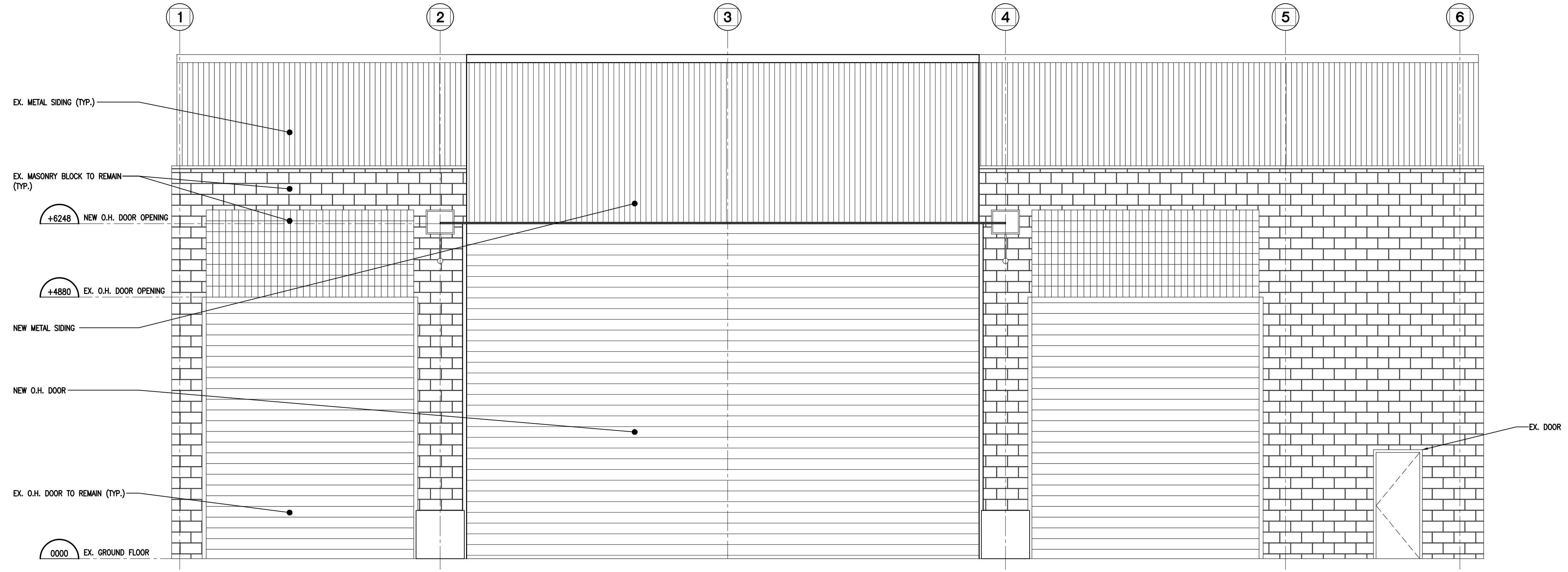
PROJECT NO: **23170** DRAWING NO: **S202**

DO NOT SCALE THE DRAWINGS.
 CHECK AND VERIFY ALL DIMENSIONS AT THE SITE.
 ALL DRAWINGS, SPECIFICATIONS AND RELATED DOCUMENTS ARE THE
 COPYRIGHT PROPERTY OF THE CONSULTANT AND MUST BE RETURNED
 UPON REQUEST. REPRODUCTION OF DRAWINGS IN PART OR WHOLE
 WITHOUT THE PERMISSION OF THE CONSULTANT IS FORBIDDEN.
 DRAWINGS ARE NOT TO BE USED FOR CONSTRUCTION UNTIL SIGNED
 AND SEALED BY THE CONSULTANT.

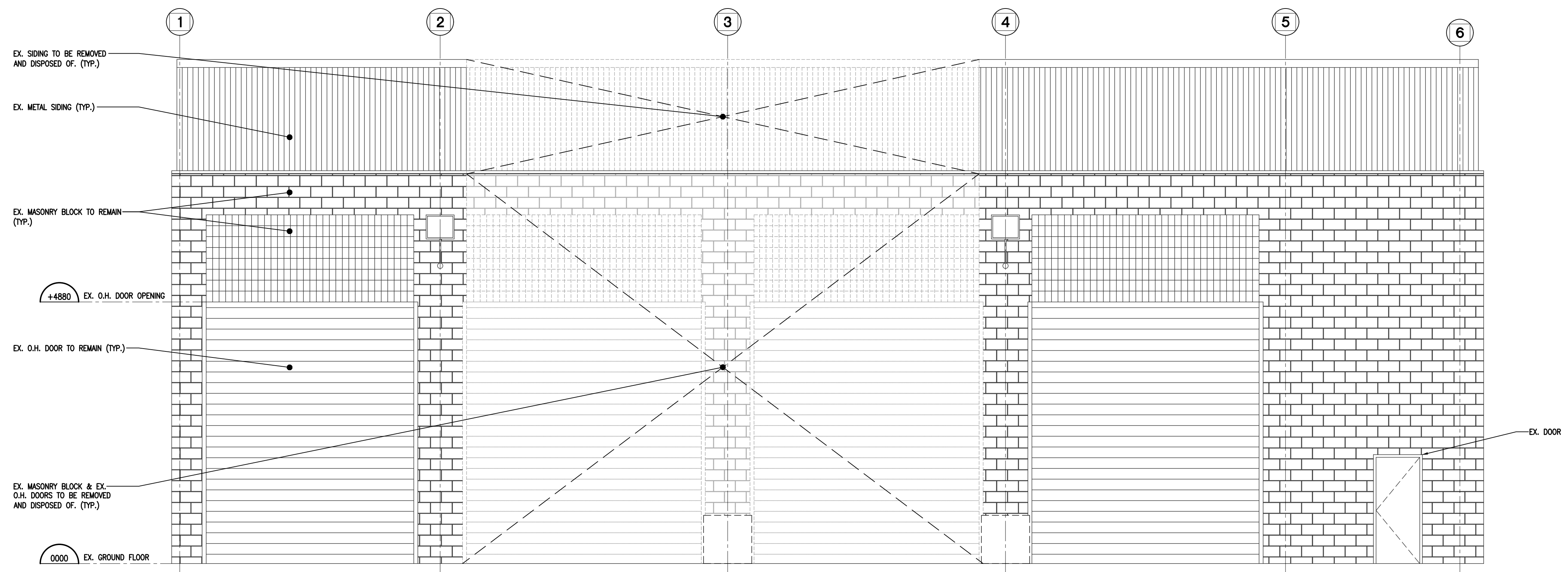


NO.	ISSUES	DATE	BY
1	ISSUED FOR PRICING	OCT. 27, 2023	BBA

NO.	REVISIONS	DATE	BY



2
S301
 ELEVATION
 1:50

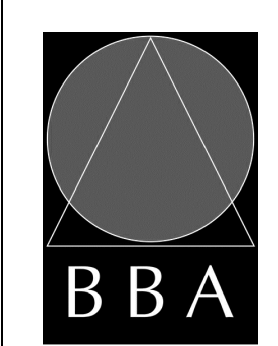


1
S301
 DEMOLITION ELEVATION
 1:50

PROJECT:
STRUCTURAL MODIFICATIONS FOR NEW OVERHEAD DOOR
 322 BENNETT RD, CLARINGTON, ON, L1C 3Z2

GFL ENVIRONMENTAL

DRAWING:
ELEVATIONS



BARRY BRYAN ASSOCIATES
 Architects
 Engineers
 Project Managers
 250 Water Street
 Suite 201
 Whitby, Ontario
 L1N 0G5
 Tel: (905) 666-5252
 Fax: (905) 666-5256
 e-mail: bba@bba-archeng.com

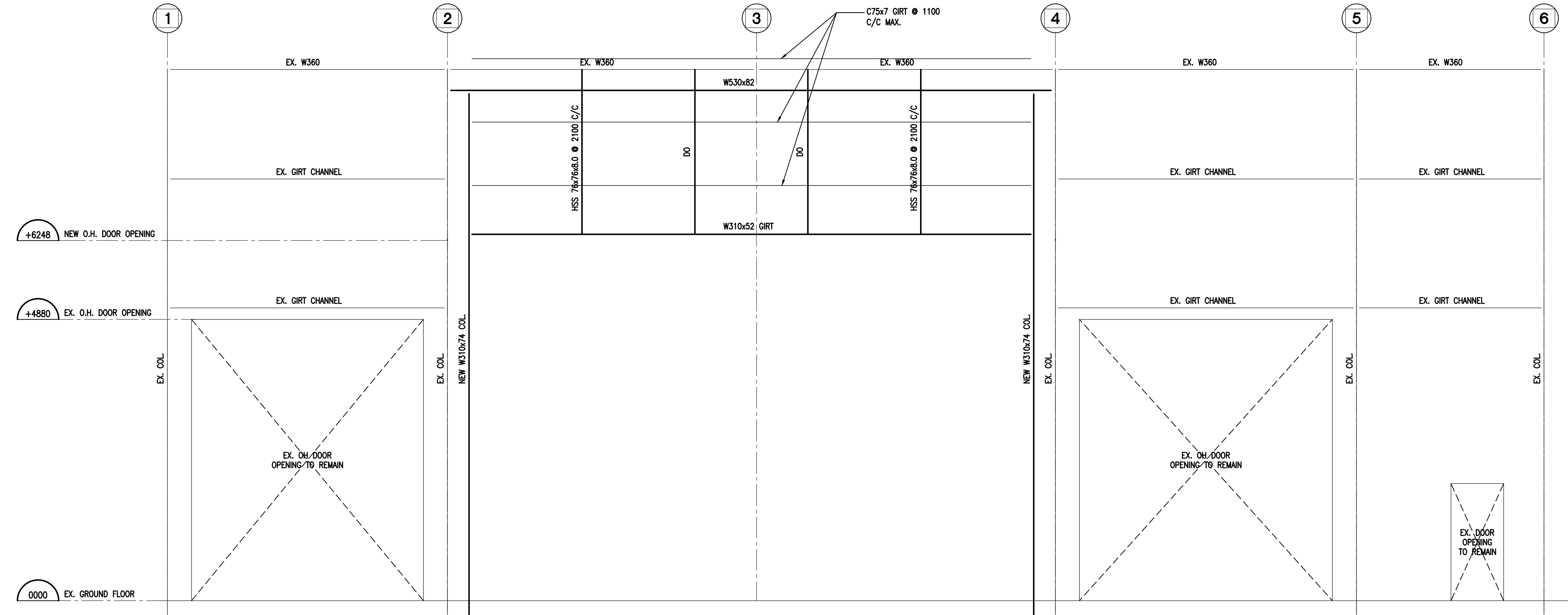
DESIGN BY: BK	SEC. CONTROL: DEL.
DRAWN BY: JMM	% COMPLETE
CHECKED BY: BK	INITIAL:
DATE: AUGUST 2023	
SCALE: AS NOTED	
FILE:	

PROJECT NO:
23170
 DRAWING NO:
S301

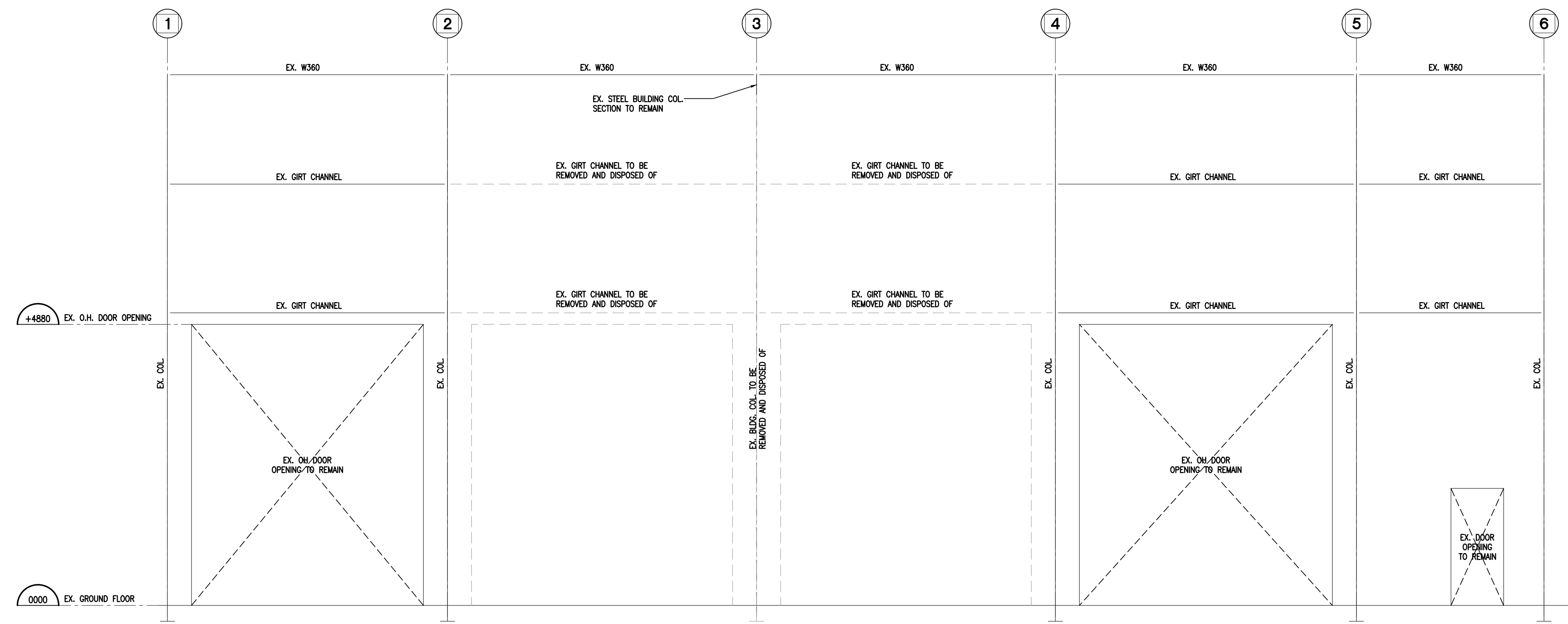
DO NOT SCALE THE DRAWINGS.
 CHECK AND VERIFY ALL DIMENSIONS AT THE SITE.
 ALL DRAWINGS, SPECIFICATIONS AND RELATED DOCUMENTS ARE THE
 COPYRIGHT PROPERTY OF THE CONSULTANT AND MUST BE RETURNED
 UPON REQUEST. REPRODUCTION OF DRAWINGS IN PART OR WHOLE
 WITHOUT THE PERMISSION OF THE CONSULTANT IS FORBIDDEN.
 DRAWINGS ARE NOT TO BE USED FOR CONSTRUCTION UNTIL SIGNED
 AND SEALED BY THE CONSULTANT.



NO.	ISSUES	DATE	BY
1	ISSUED FOR PRICING	OCT. 27, 2023	BBA



2 FRAMING ELEVATION
 S302 1:50

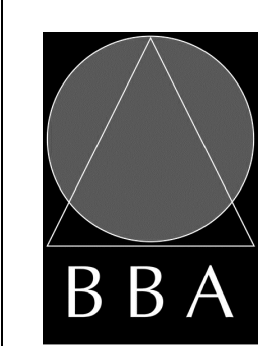


1 FRAMING DEMOLITION ELEVATION
 S302 1:50

PROJECT:
**STRUCTURAL MODIFICATIONS
 FOR NEW OVERHEAD DOOR**
 322 BENNETT RD, CLARINGTON, ON,
 L1C 3Z2

GFL ENVIRONMENTAL

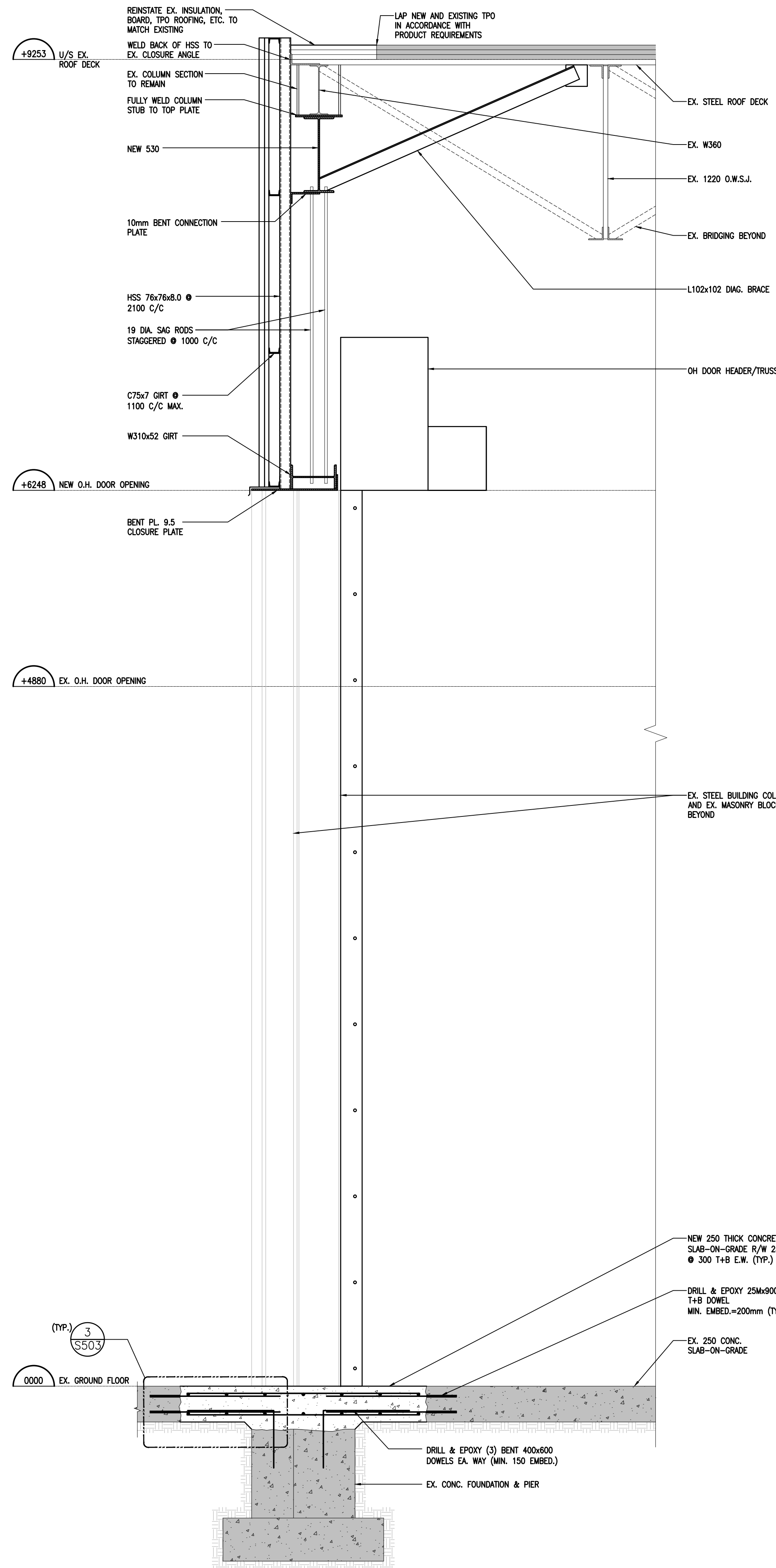
DRAWING:
FRAMING ELEVATIONS



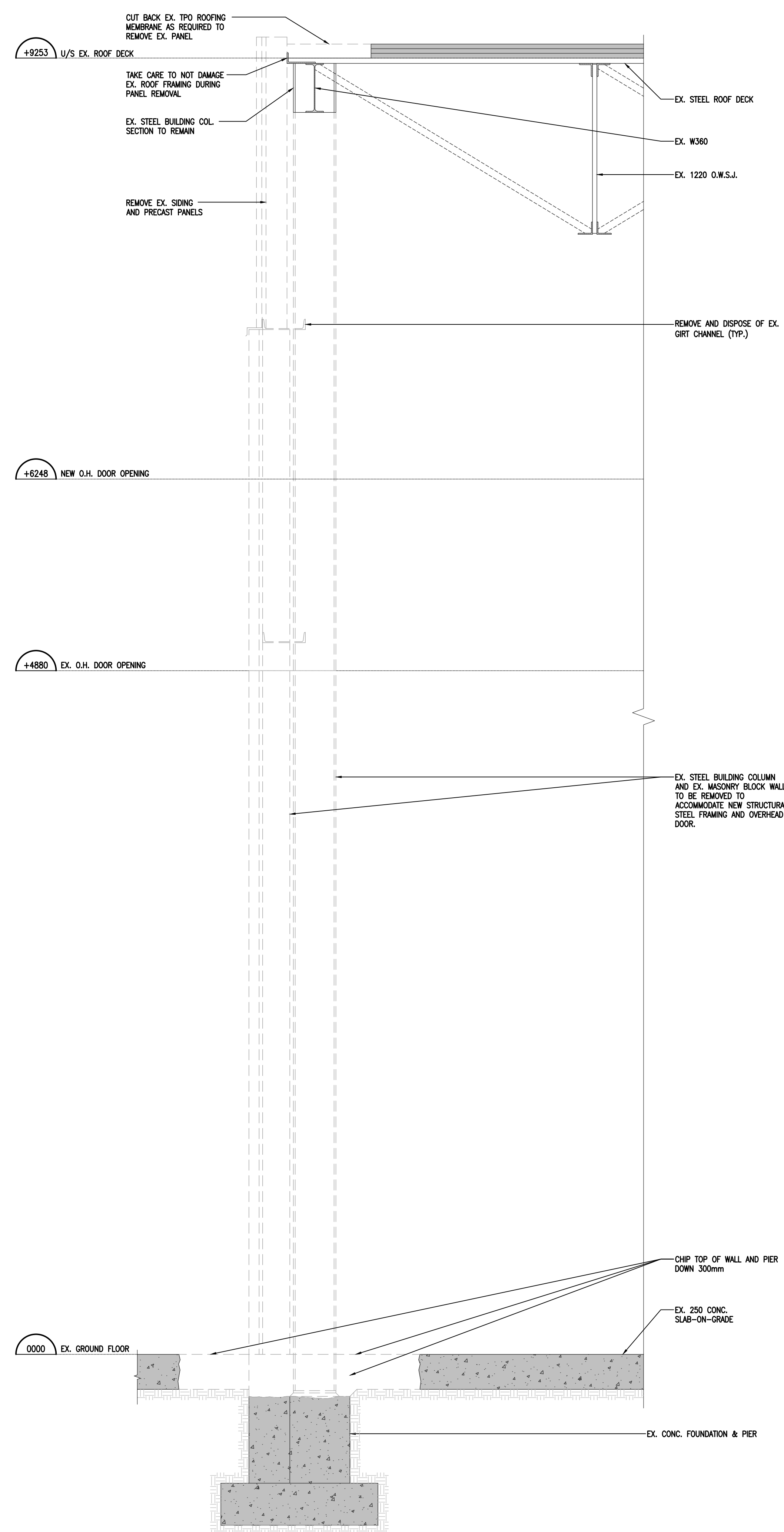
**BARRY BRYAN
 ASSOCIATES**
 Architects
 Engineers
 Project Managers
 250 Water Street
 Suite 201
 Whitby, Ontario
 L1N 0G5
 Tel: (905) 666-5252
 Fax: (905) 666-5256
 e-mail: bba@bba-archeng.com

DESIGN BY: BK	SOC. CONTROL: DEL.
DRAWN BY: JMM	% COMPLETE
CHECKED BY: BK	INITIAL:
DATE: AUGUST 2023	
SCALE: AS NOTED	
FILE:	

PROJECT NO:
23170
 DRAWING NO:
S302



2 SECTION
S501 1:20



1 DEMOLITION SECTION
S501 1:20

DO NOT SCALE THE DRAWINGS.
CHECK AND VERIFY ALL DIMENSIONS AT THE SITE.
ALL DRAWINGS, SPECIFICATIONS AND RELATED DOCUMENTS ARE THE COPYRIGHT PROPERTY OF THE CONSULTANT AND MUST BE RETURNED UPON REQUEST. REPRODUCTION OF DRAWINGS IN PART OR WHOLE WITHOUT THE PERMISSION OF THE CONSULTANT IS FORBIDDEN.
DRAWINGS ARE NOT TO BE USED FOR CONSTRUCTION UNTIL SIGNED AND SEALED BY THE CONSULTANT.



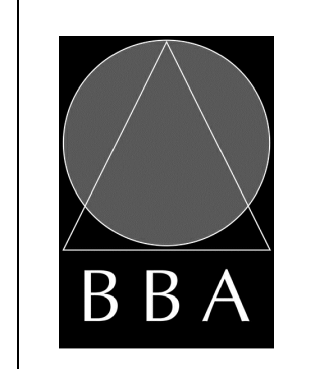
NO.	ISSUES	DATE	BY
1	ISSUED FOR PRICING	OCT. 27, 2023	BBA

NO.	REVISIONS	DATE	BY

PROJECT:
STRUCTURAL MODIFICATIONS FOR NEW OVERHEAD DOOR
322 BENNETT RD, CLARINGTON, ON, L1C 3Z2

GFL ENVIRONMENTAL

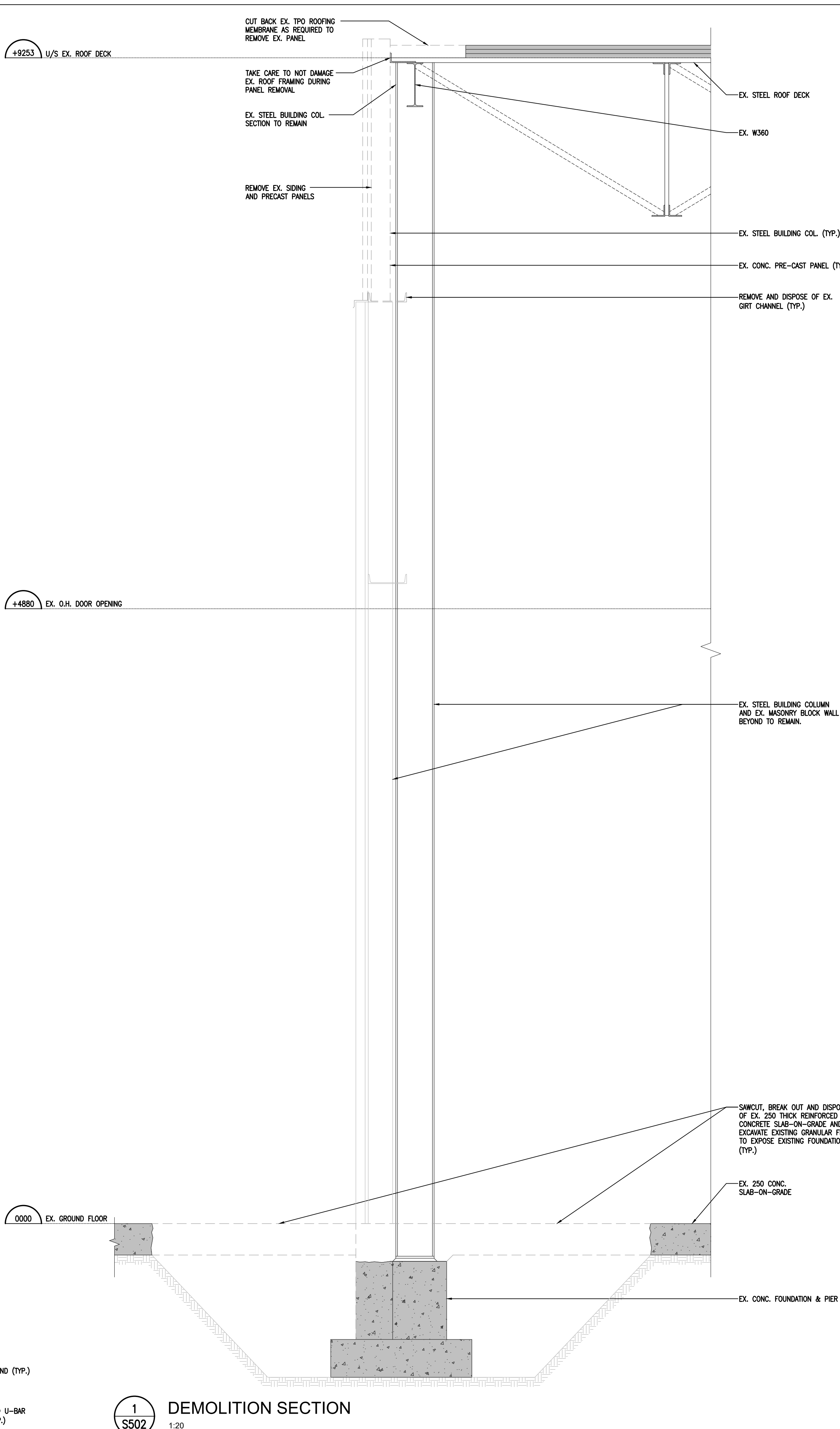
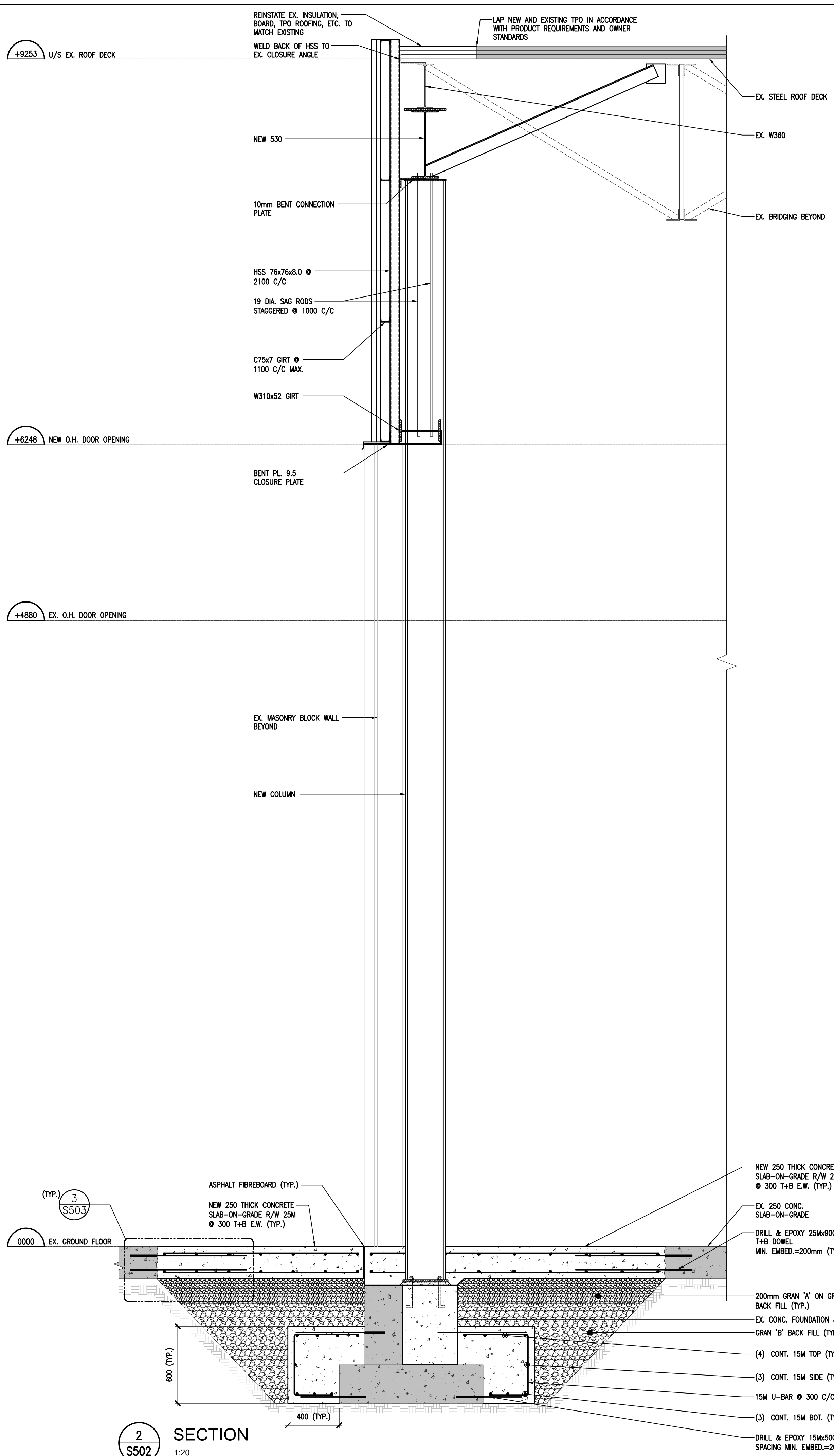
DRAWING:
SECTIONS & DETAILS



BARRY BRYAN ASSOCIATES
Architects
Engineers
Project Managers
250 Water Street
Suite 201
Whitby, Ontario
L1N 0G5
Tel: (905) 666-5252
Fax: (905) 666-5256
e-mail: bba@bba-archeng.com

DESIGN BY: BK	DOC. CONTROL: DATE:
DRAWN BY: JMM	% COMPLETE:
CHECKED BY: BK	INITIAL:
DATE: AUGUST 2023	SCALE: AS NOTED
FILE:	

PROJECT NO: **23170** DRAWING NO: **S501**



DO NOT SCALE THE DRAWINGS.
CHECK AND VERIFY ALL DIMENSIONS AT THE SITE.
ALL DRAWINGS, SPECIFICATIONS AND RELATED DOCUMENTS ARE THE COPYRIGHT PROPERTY OF THE CONSULTANT AND MUST BE RETURNED UPON REQUEST. REPRODUCTION OF DRAWINGS IN PART OR WHOLE WITHOUT THE PERMISSION OF THE CONSULTANT IS FORBIDDEN.
DRAWINGS ARE NOT TO BE USED FOR CONSTRUCTION UNTIL SIGNED AND SEALED BY THE CONSULTANT.



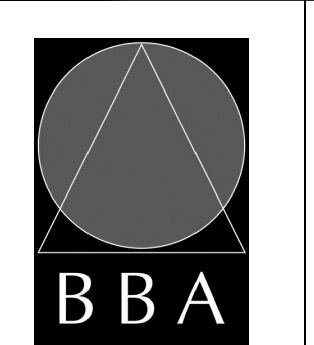
NO.	ISSUES	DATE	BY
1	ISSUED FOR PRICING	OCT. 27, 2023	BBA

NO.	REVISIONS	DATE	BY

PROJECT:
STRUCTURAL MODIFICATIONS FOR NEW OVERHEAD DOOR
322 BENNETT RD, CLARINGTON, ON, L1C 3Z2

GFL ENVIRONMENTAL

DRAWING:
SECTIONS & DETAILS

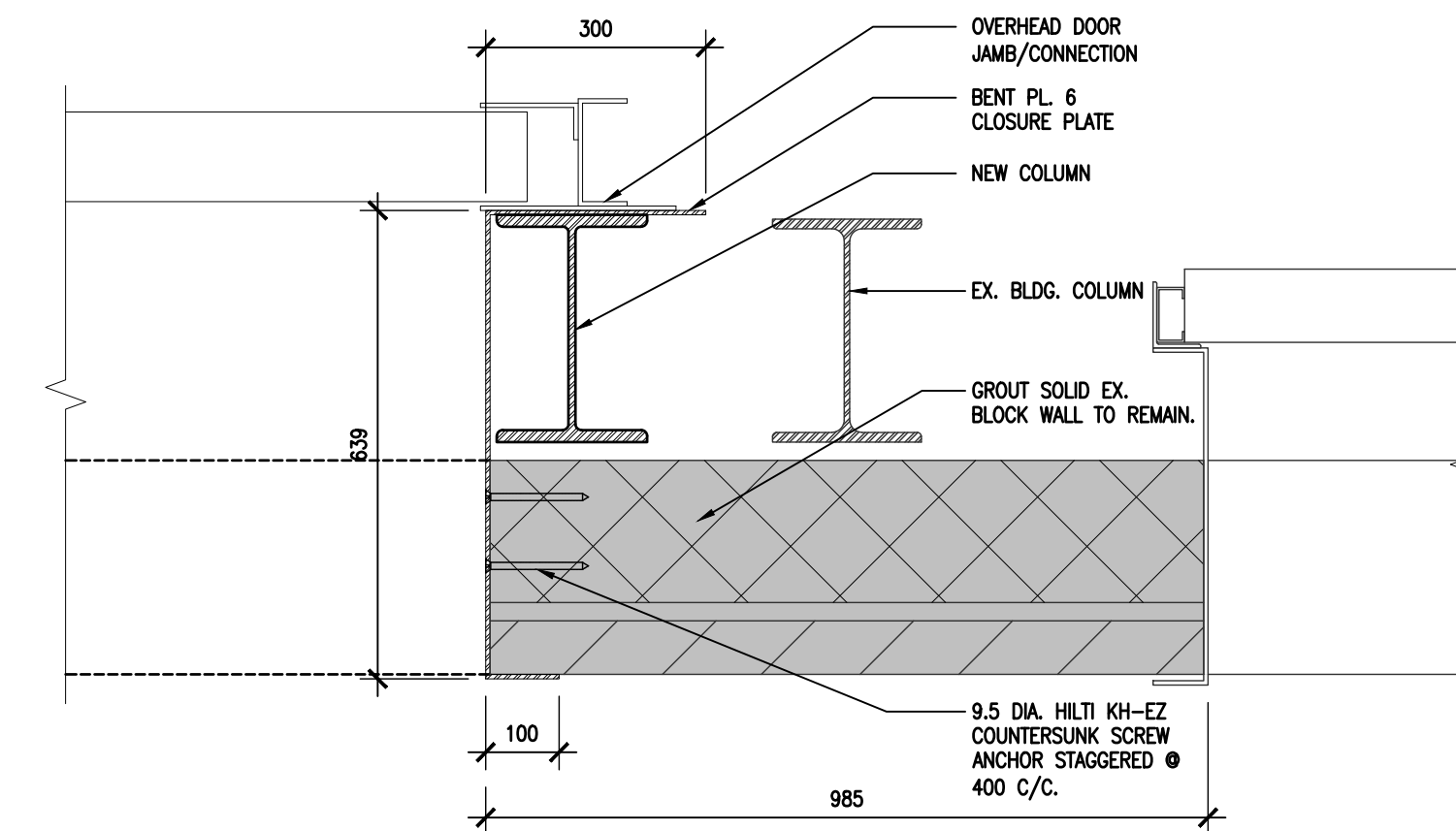


BARRY BRYAN ASSOCIATES
Architects
Engineers
Project Managers
250 Water Street
Suite 201
Whitby, Ontario
L1N 0G5
Tel: (905) 666-5252
Fax: (905) 666-5256
e-mail: bba@bba-archeng.com

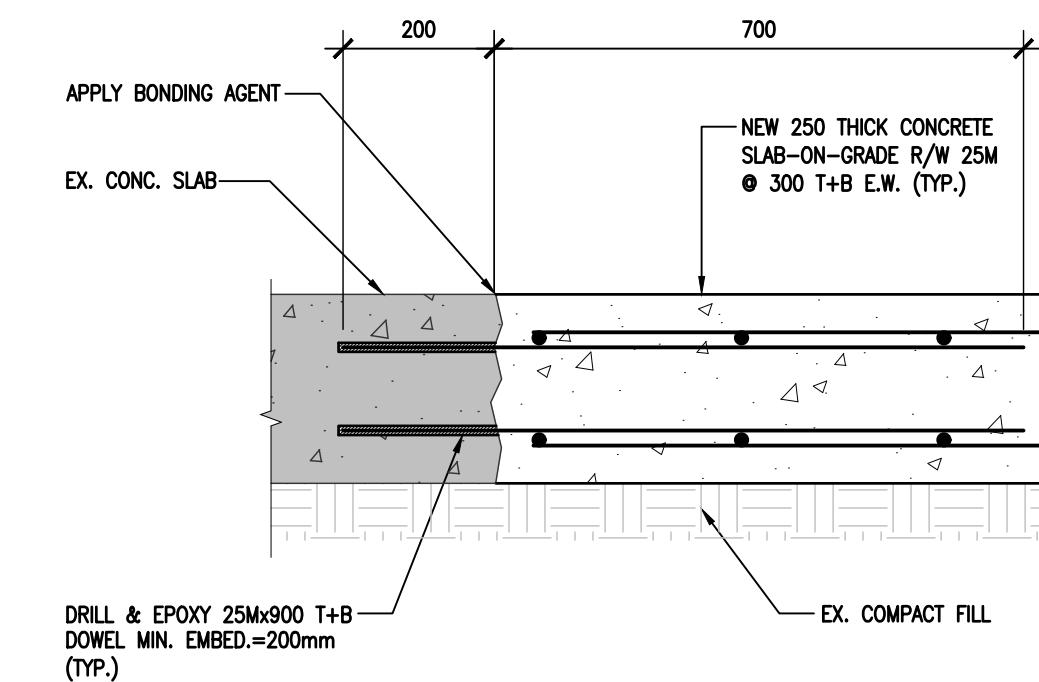
DESIGN BY: BK	DOC CONTROL: DATE:
DRAWN BY: JMM	% COMPLETE:
CHECKED BY: BK	DATE: AUGUST 2023
DATE: AUGUST 2023	SCALE: AS NOTED
SCALE: AS NOTED	FILE:

PROJECT NO:
23170

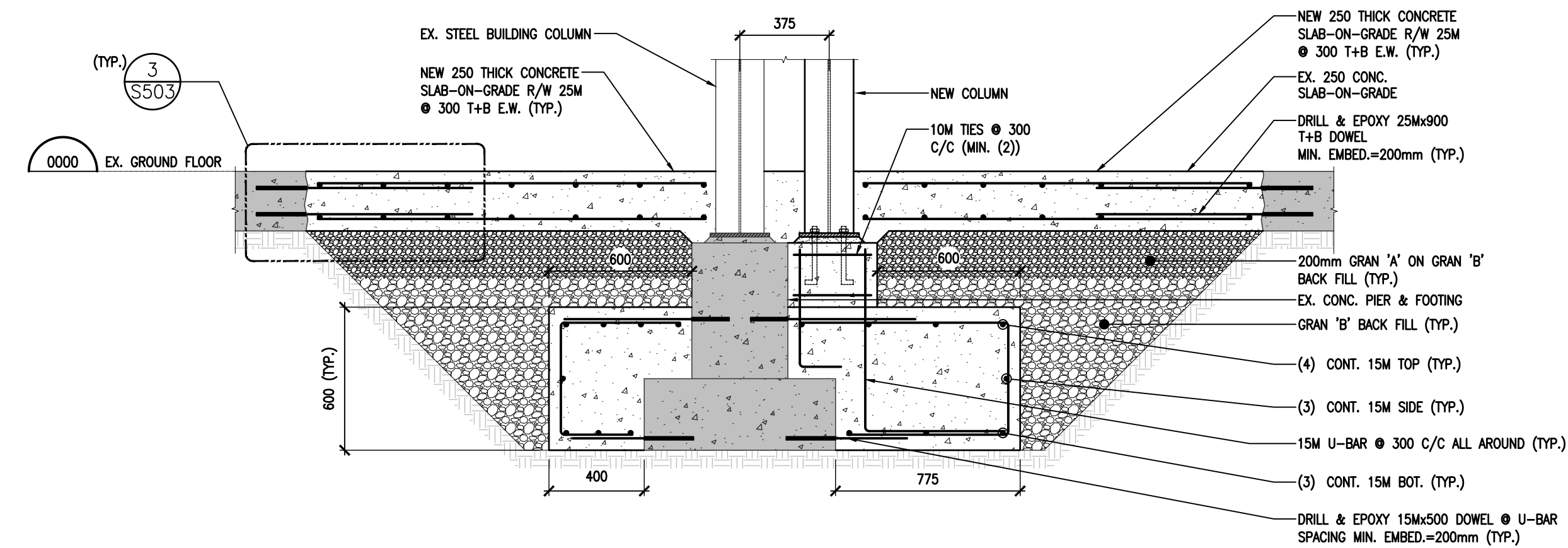
DRAWING NO:
S502



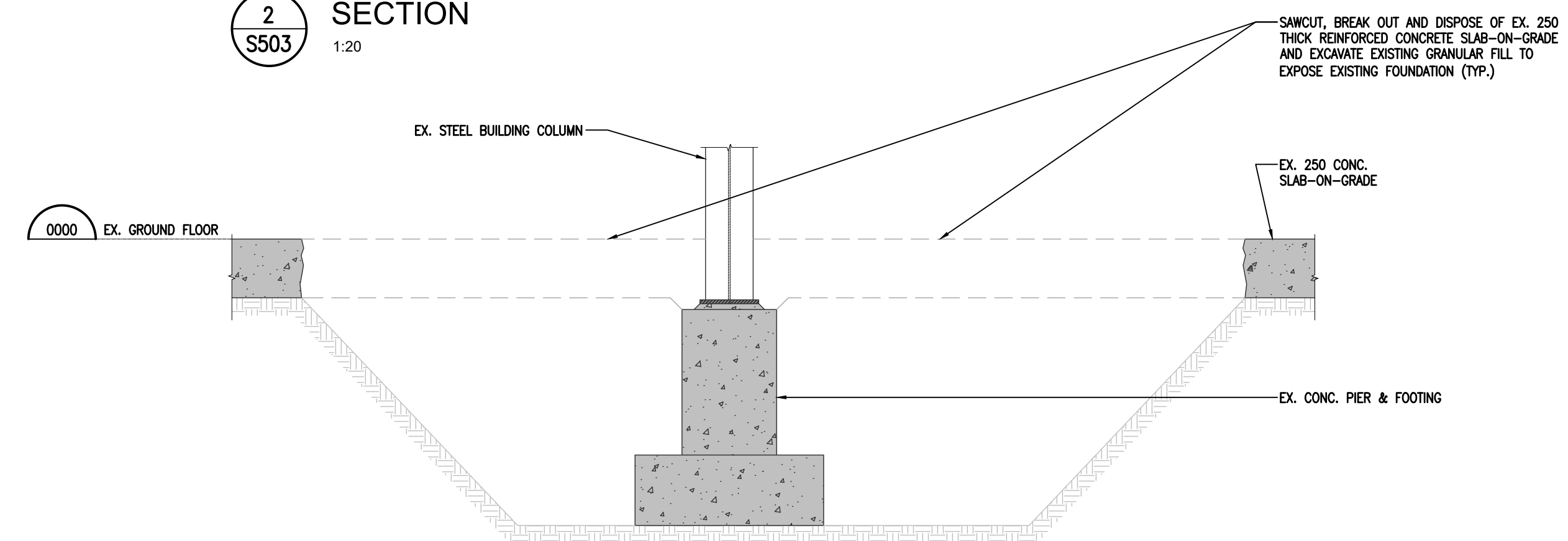
4
DETAIL
S503
1:10



3
TYP. SLAB REPAIR DETAIL
S503
1:10



2
SECTION
S503
1:20



1
DEMOLITION SECTION
S503
1:20

DO NOT SCALE THE DRAWINGS.
CHECK AND VERIFY ALL DIMENSIONS AT THE SITE.
ALL DRAWINGS, SPECIFICATIONS AND RELATED DOCUMENTS ARE THE COPYRIGHT PROPERTY OF THE CONSULTANT AND MUST BE RETURNED UPON REQUEST. REPRODUCTION OF DRAWINGS IN PART OR WHOLE WITHOUT THE PERMISSION OF THE CONSULTANT IS FORBIDDEN.
DRAWINGS ARE NOT TO BE USED FOR CONSTRUCTION UNTIL SIGNED AND SEALED BY THE CONSULTANT.



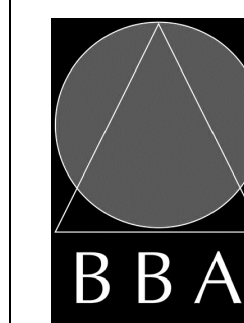
NO.	ISSUES	DATE	BY
1	ISSUED FOR PRICING	OCT. 27, 2023	BBA

NO.	REVISIONS	DATE	BY

PROJECT:
STRUCTURAL MODIFICATIONS FOR NEW OVERHEAD DOOR
322 BENNETT RD, CLARINGTON, ON, L1C 3Z2

GFL ENVIRONMENTAL

DRAWING:
SECTIONS & DETAILS



BARRY BRYAN ASSOCIATES
Architects
Engineers
Project Managers
250 Water Street
Suite 201
Whitby, Ontario
L1N 0G5
Tel: (905) 666-5252
Fax: (905) 666-5256
e-mail: bba@bbearching.com

DESIGN BY: BK	DOC CONTROL DATE:
DRAWN BY: JMM	% COMPLETE:
CHECKED BY: BK	INITIAL:
DATE: AUGUST 2023	
SCALE: AS NOTED	
FILE:	

PROJECT NO.: **23170**
DRAWING NO.: **S503**