

LOWER LEVEL DOOR SCHEDULE:

No.	Type	Fire Rating	Door Size	Material	Finish	Frame Type	Material	Finish	Hardware Group	Remarks
001	Unassigned									
002	A		38" x 80"	SCW	Paint	A	HM	Paint	Storeroom	80" door to clear ul's stair
003	B	20 min.	36" x 84"	SCW	Paint	B	HM	Paint	Passage-C	Rated glass
004	A		38" x 84"	SCW	Paint	A	SCW	Paint	Office	
005	A		38" x 84"	SCW	Paint	A	SCW	Paint	Office	
006	A		38" x 84"	HM	Paint	HM	HM	Paint	Storage-C	
007	B	20 min.	36" x 80"	SCW	Paint	B	HM	Paint	Office-C	Rated glass
008	A		38" x 84"	SCW	Paint	A	HM	Paint	Storeroom	
009	A		30" x 84"	SCW	Paint	A	HM	Paint	Privacy	
010	A	20 min.							Storeroom	
011	Unassigned									
012	A	20 min.	32" x 80"	SCW	Paint	A	HM	Paint	Passage-C	New door & frame to match exist. size. Site verify R.O.
013	A		38" x 84"	SCW	Paint	A	HM	Paint	Storeroom	
014	Unassigned									
015	B		38" x 84"	SCW	Paint	B	HM	Paint	Passage	Tempered glass
016	B		38" x 84"	SCW	Paint	B	HM	Paint	Passage	Tempered glass

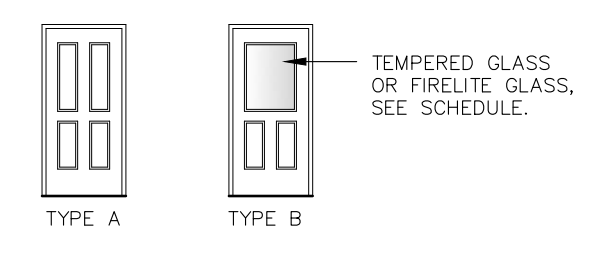
LOWER LEVEL ROOM FINISH SCHEDULE:

No.	Room Name	Floor Material	Finish	Base	Walls Material	Finish	Ceiling Material	Finish	Height	Remarks
001	Lift Lobby	Concrete	Sheet vinyl	Rubber	XGWB	Paint	XGWB	Paint	8'-6"	New laminated GWB over ex. block walls
002	Storage	Exist. conc.	Paint	None	exCB/XGWB				Stair soffit	Make good finishes for paint
003	Existing Stair		Sheet Vinyl	Rubber	N/E GWB				Varies	New laminated GWB over ex. block walls
004	Office				N/E XGWB				8'-6"	New rubber treads & risers
005	Staff Room									
006	Mechanical	Exist.	Exist.	Exist.	N/E XGWB		XGWB			5/8" type 'X' GWB on clg. & new walls
007	Existing Kitchen	Sheet vinyl	Rubber	Exist. CB	Exist. CB		Exist. GWB		9'-6"	Remove cer. tile on walls, new cer. tile. See elev.
008	Storage				CB, N/E GWB		Ex. GWB		9'-6"	(New GWB at new walls)
009	Staff Washroom				XGWB		New GWB		8'-0"	New laminated GWB on ex. block walls
010	Janitor	Exist. lino.	Exist.	Exist.	Ex. CB/GWB		Exist. GWB		9'-6"	5/8" type 'X' GWB on clg. & new walls.
011	Hallway	Sheet vinyl	Rubber	N/E XGWB					9'-6"	New lam. GWB on ex. block walls
012	Existing Stair									
013	Storage									
014	Preschool Washroom	Sheet vinyl	Flash cove	N/E XGWB			New GWB		8'-0"	
015	Preschoolers	Cork back LVT	Rubber	N/E XGWB			Exist. GWB		8'-6"	
016	Hallway	Sheet vinyl	Rubber	N/E XGWB			Exist. GWB		8'-6"/9'-6"	Clg. jogs up with floor jog above

NOTES:
 • MAKE GOOD EXISTING GWB TO REMAIN, FOR NEW PAINT.
 • EXCEPT WHERE NOTED OTHERWISE ON PLANS, PROVIDE NEW GWB FINISH OVER EXISTING INTERIOR CONC. BLOCK.

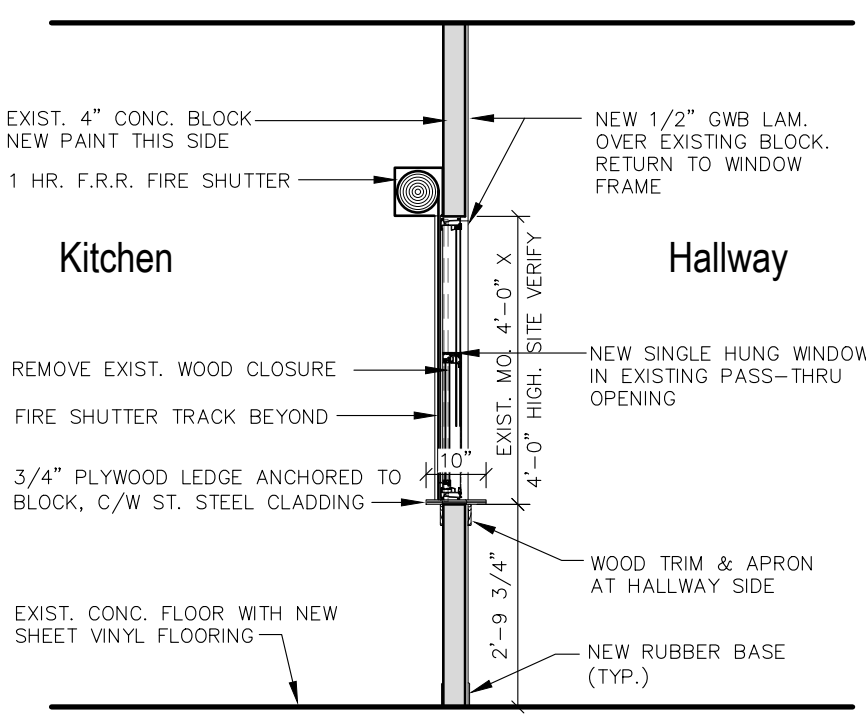
CB: CONCRETE BLOCK GWB: GYPSUM WALL BOARD XGWB: 5/8" TYPE 'X' GWB N/E: NEW OR EXISTING EX/EXIST: EXISTING

Door/Frame Types



Hardware Groups:

- PASSAGE: LEVER STYLE PASSAGE FUNCTION LATCHSET, DOORSTOP.
 PASSAGE-C: LEVER STYLE PASSAGE FUNCTION LATCHSET, CLOSER, DOORSTOP.
 OFFICE: LEVER STYLE OFFICE FUNCTION LATCHSET, DOORSTOP.
 OFFICE-C: LEVER STYLE OFFICE FUNCTION LOCKSET, CLOSET, DOORSTOP.
 PRIVACY: LEVER STYLE PRIVACY FUNCTION LOCKSET, DOORSTOP.
 STOREROOM: LEVER STYLE STOREROOM FUNCTION LOCKSET, DOORSTOP.



2. PASS-THRU with FIRE SHUTTER

SCALE: 3/8" = 1'-0"

1. AREA ANALYSIS & STATISTICS FOR UPPER & LOWER FLOORS

CHILDREN	REQUIRED NET Area m sq.	PROVIDED NET Area m sq.	WINDOWS (min 10% of net floor area req'd.)		OTHER ITEMS PROVIDED					
			REQUIRED m sq.	MIN. PROVIDED m sq.	type					
Children	24 @ 2.8 m sq.	67.2	724.0	69.0	743.0	6.9	74.3	9.3	99.9	Counters/sink, cott storage, 24 cubbies
Toddlers	15 @ 2.8 m sq.	42.0	452.1	43.9	473.0	4.39	47.3	6.9	74.4	Counters/change table & sink, 15 cubbies, cott storage
Infants	10 @ 2.8 m sq.	28.0	301.4	28.1	302.0	2.8	30.2	7.7	82.4	Counters/change table & sink, 10 cubbies, 10 cribs

2. WASHROOM FACILITIES

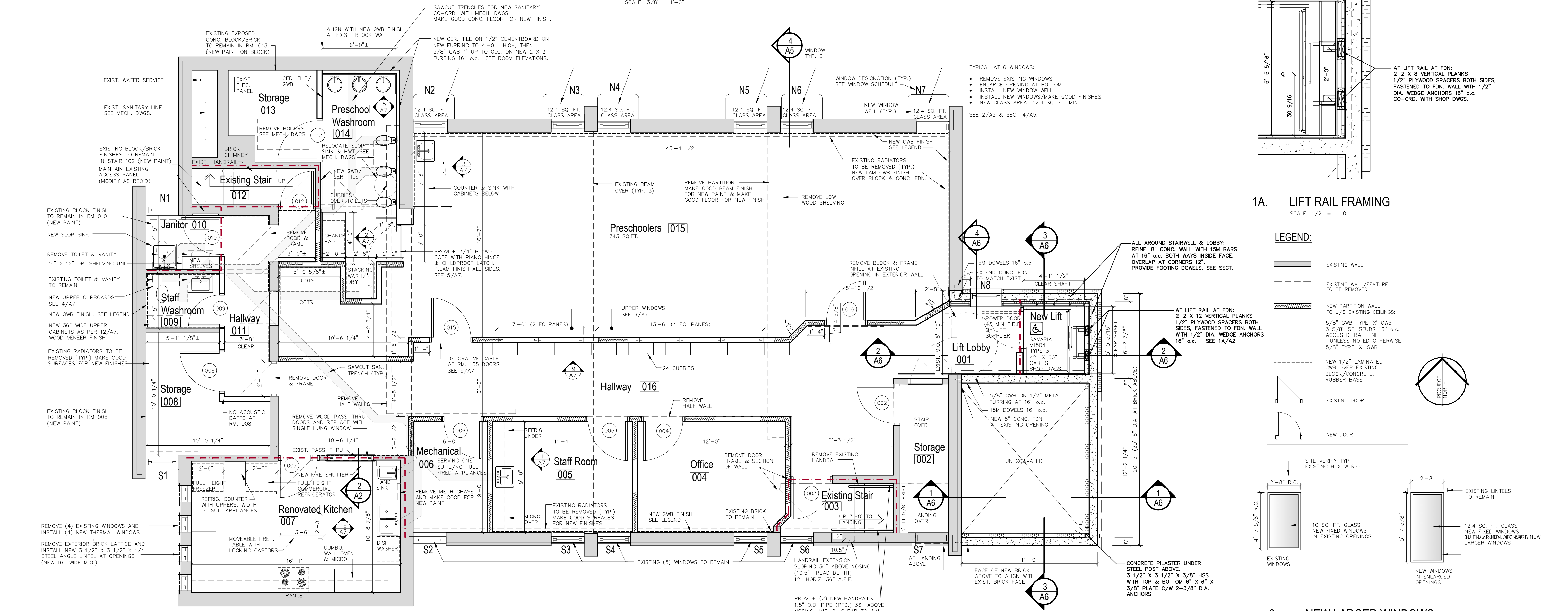
- Children's Water Closets (3.7.4.3.1.)
- 5 Fixtures for 50 children are required
- 5 Fixtures for 49 children are provided
- Staff Washrooms (3.7.4.3.A)
- 1 fixture for 25 female staff is required
- 14 Staff Members will use Staff Washroom, Infant Washroom & Barrier Free washroom.

3. EGRESS CALCULATIONS Per Occupant load (3.1.17.1)

Room	Area: m sq.	sq. ft.	Area / Per Person m sq.	Calculated No.	Actual No.
Staff	10.0	108	@ 0.95	14.5	14 (Staff)
Offices	20	215	@ 9.3	2.0	Incl. in staff
Storage	14.7	158	@ 46	0	0
Kitchen	16.9	182	@ 9.3	1.8	1
Children's Rooms	147	1582	@ 1.85	79.5	49
Total Occupant Load of Floor (3.1.17.1.)				97	64

4. REQUIRED EXIT WIDTH (3.4.3.2.1.)

- Required exit width for Occupant Load of 97 people is 592mm (23.3") of door width/892mm (35") at stairs.
- (Horizontal exit @ 6.1mm/person at doorway & 9.2mm per person at stair exit)
- Provided (new/existing) Cumulative Exit Width at doorways is 1727mm (68") and sufficient for 283 persons.
- Provided (existing) Cumulative Exit Width at stairs is 2134mm (84") and sufficient for 232 persons.

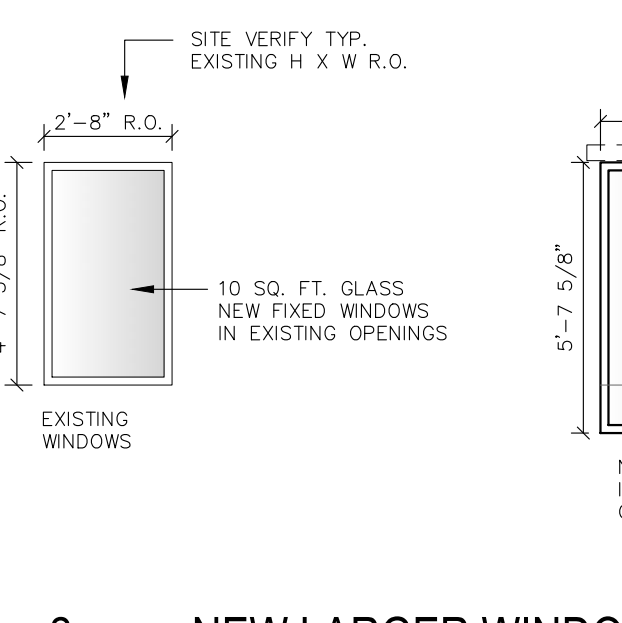
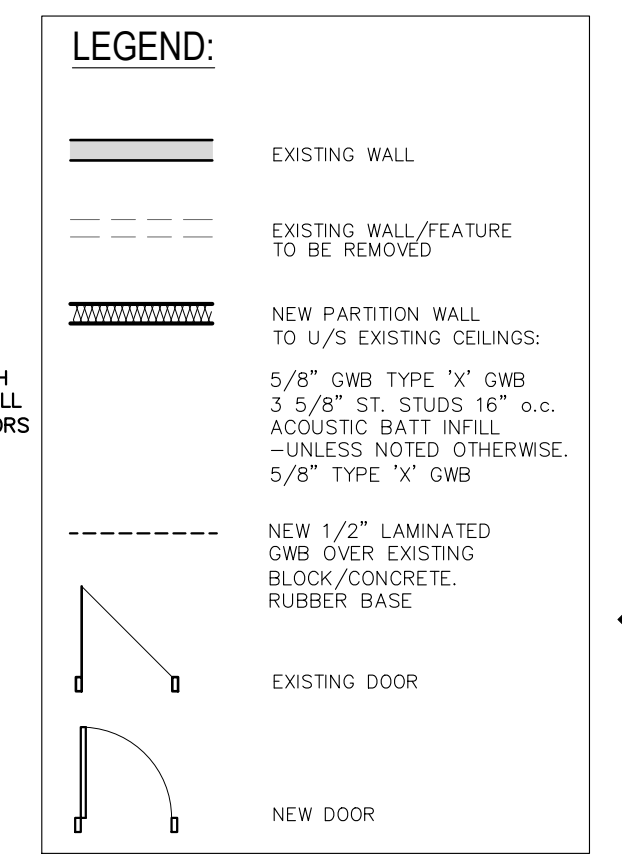


1. LOWER FLOOR PLAN

SCALE: 1/4" = 1'-0"

1A. LIFT RAIL FRAMING

SCALE: 1/2" = 1'-0"



2. NEW LARGER WINDOWS

SCALE: 1/4" = 1'-0"

PROJECT TITLE: Saint Albans Nursery Two Childcare
 587 MONAGHAN ROAD, PETERBOROUGH, ONTARIO

ARCHITECT: CHRISTOPHER Z. TWORKOWSKI
 34 BRIDGE STREET, UNIT 3
 LAKEFIELD, ONT. K0L 2H0 705-652-1616

PROJECT NO.: 2418

DATE ISSUED: JAN 7/25
 DATE DRAWN: DRS
 CHECKED BY: CZT
 SCALE: 1/4" = 1'-0"

SHEET NO.: A2

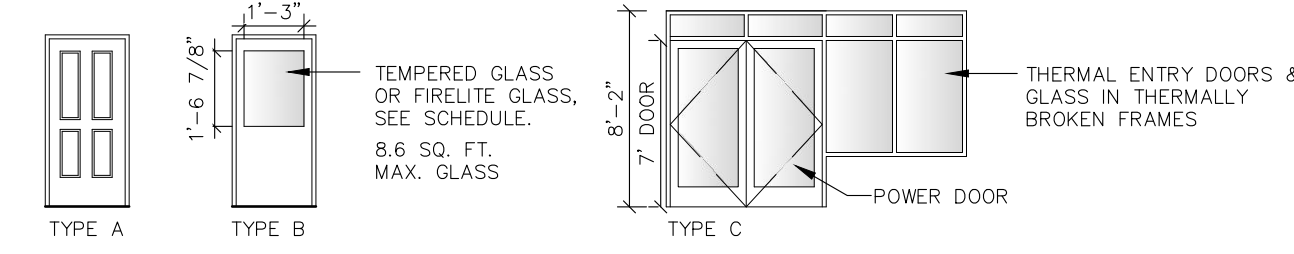
LOWER FLOOR PLAN, SCHEDULES

THE GENERAL CONTRACTOR SHALL BE RESPONSIBLE FOR VERIFYING ALL DIMENSIONS AND REPORTING ALL ERRORS AND OMISSIONS TO THE ARCHITECT. THIS DRAWING SHALL NOT BE USED UNTIL SIGNED BY THE ARCHITECT.

UPPER LEVEL DOOR SCHEDULE:

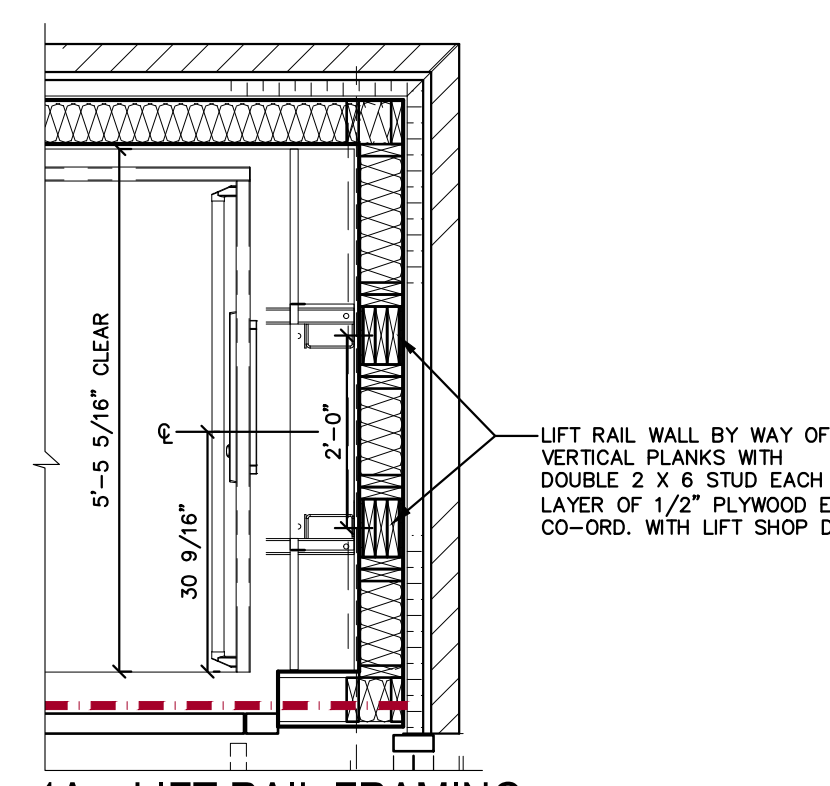
No.	Type	Fire Rating	Door Size	Material	Finish	Frame Type	Material	Finish	Hardware Group	Remarks
100	C		2'38" x 84"	Alum	Anod/Glass	A	Alum	Anod	Exterior	Thermal glazing, power door
101	A	20 min.	36" x 84"	SCW	Paint	A	HM	Paint	Storeroom	
102	B		36" x 84"	SCW	Paint	B	HM	Paint	Passage-C	Tempered glass
103	B		36" x 84"	SCW	Paint	B	HM	Paint	Passage	
104	A		30" x 84"	SCW	Paint	A	HM	Paint	Universal	
105	A		30" x 84"	SCW	Paint	A	HM	Paint	Privacy	
106	A		30" x 84"	SCW	Paint	A	SCW	Paint	Office	
107	A		36" x 84"	SCW	Paint	A	HM	Paint	Storeroom	
108	A	20 min.	36" x 84"	SCW	Paint	A	HM	Paint	Storeroom	New door & frame to match exist. size. Site verify R.O.
109	A	20 min.	30" x 80"	SCW	Paint	A	HM	Paint	Passage-C	
110	A		32" x 84"	SCW	Paint	A	HM	Paint	Passage	
111	B		38" x 84"	SCW	Paint	A	HM	Paint	Passage	Tempered glass

Door/Frame Types:



Hardware Groups:

- EXTERIOR: RIGHT DOOR-POWER DOOR, D-PULL/PUSH INSIDE & OUT, DEADLOCK WITH TUB TURN AT INTERIOR, LOW PROFILE THRESHOLD, WEATHERSTRIPPING. LEFT DOOR: CLOSER, FLUSH BOLTS TOP & BOTTOM, D-PULL/PUSH INSIDE & OUT, LOW PROFILE THRESHOLD, WEATHERSTRIPPING.
- PASSAGE: LEVER STYLE PASSAGE FUNCTION LATCHSET, DOORSTOP.
- PASSAGE-C: LEVER STYLE PASSAGE FUNCTION LATCHSET, CLOSER, DOORSTOP.
- OFFICE: LEVER STYLE OFFICE FUNCTION LATCHSET, DOORSTOP.
- PRIVACY: LEVER STYLE PRIVACY FUNCTION LATCHSET, DOORSTOP.
- STOREROOM: LEVER STYLE STOREROOM FUNCTION LATCHSET, DOORSTOP.
- UNIVERSAL: LEVER STYLE POWER DOOR SET WITH UNIVERSAL WASHROOM ILLUMINATED CONTROL SET, (GREEN/RED PERMETER), DOORSTOP.

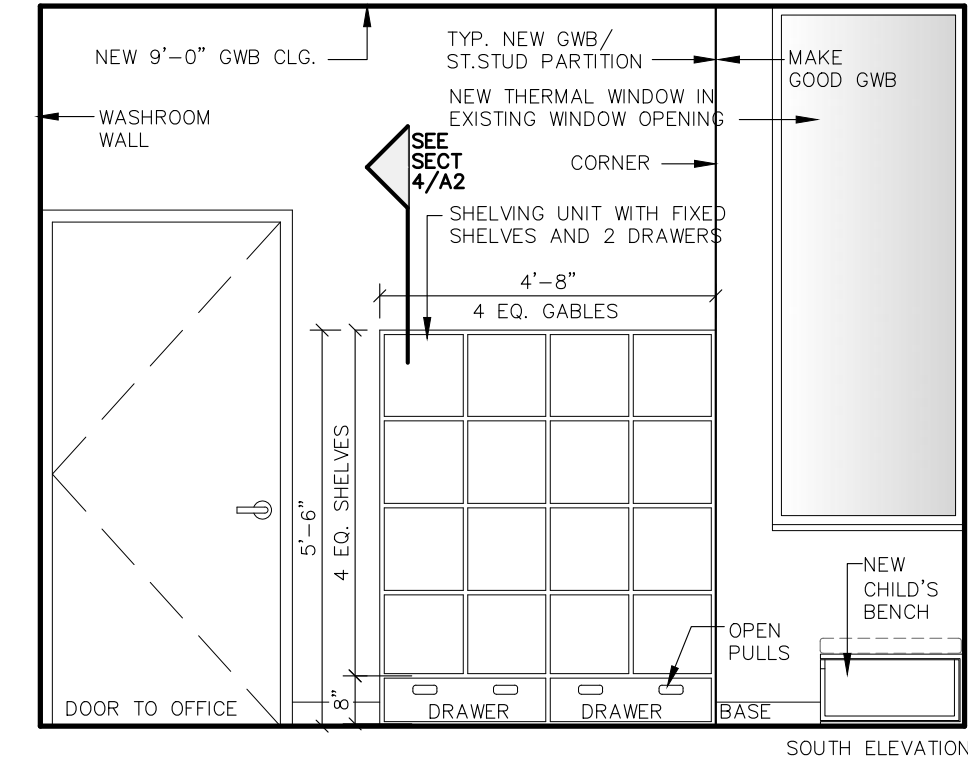
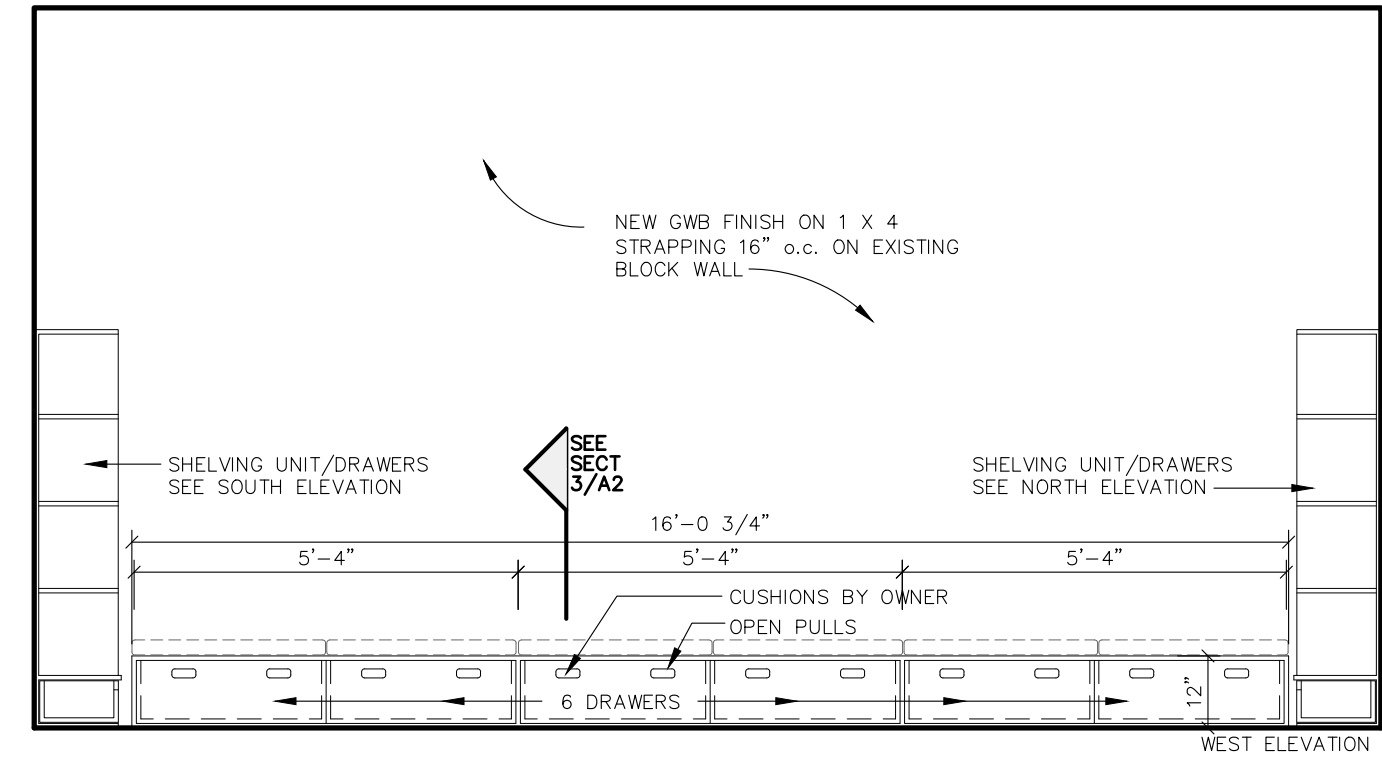
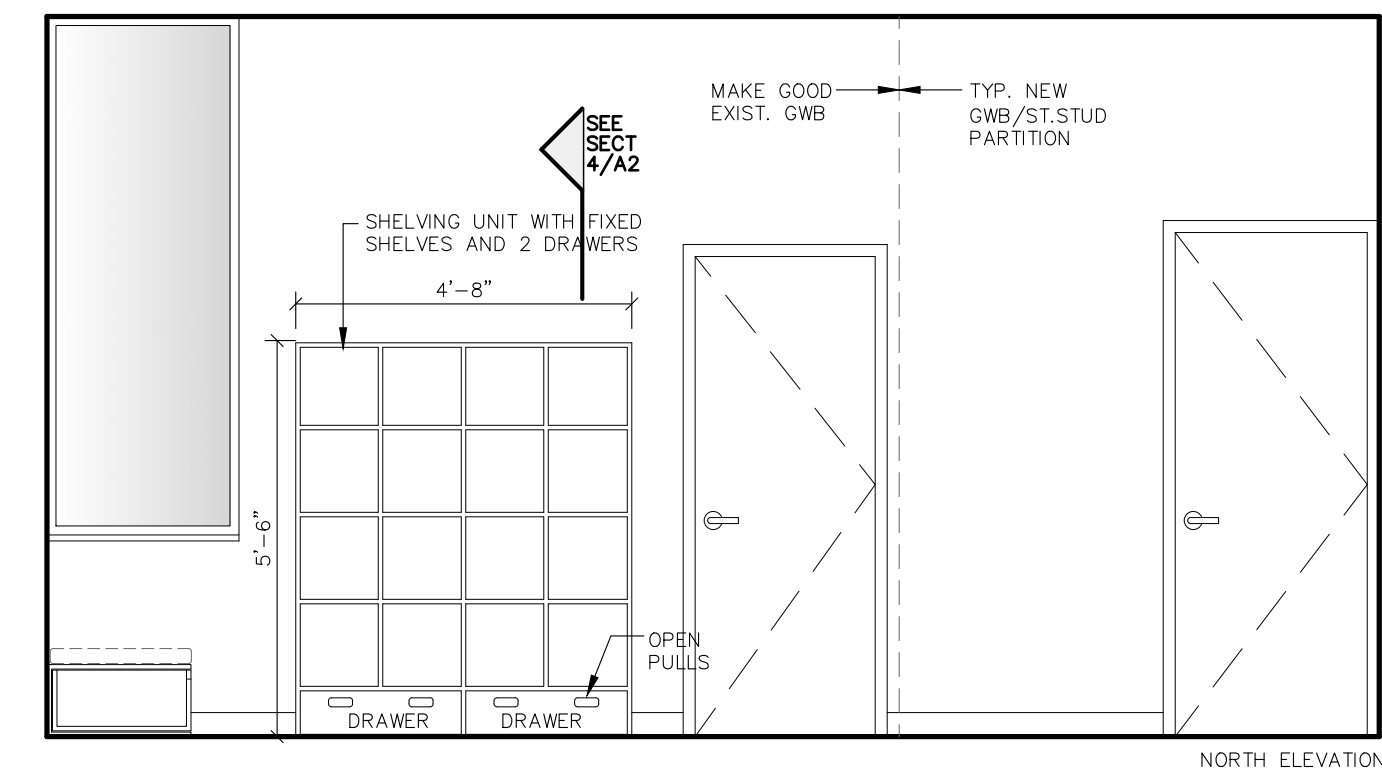
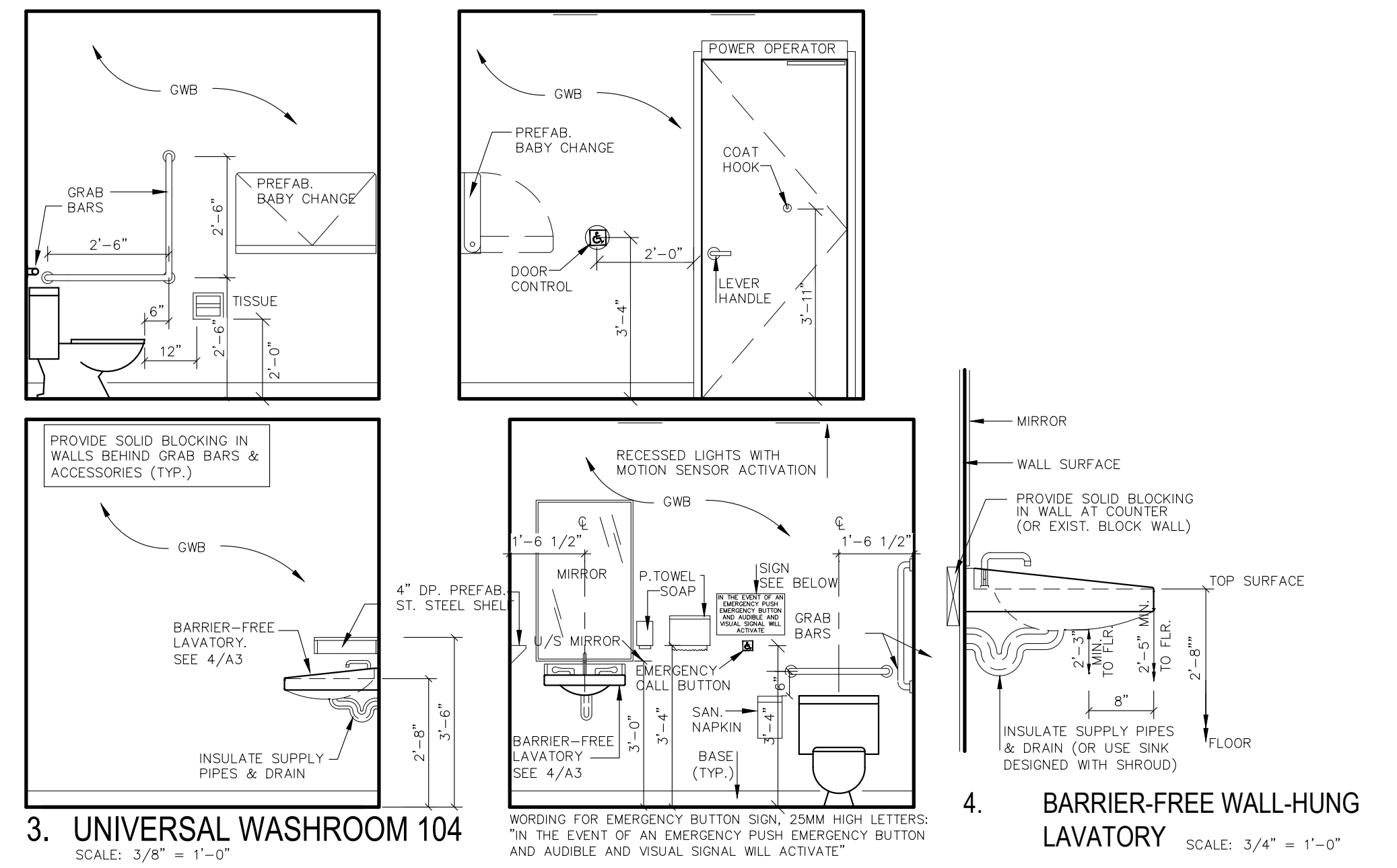


REMOVE (4) EXISTING WINDOWS AND INSTALL (4) NEW THERMAL WINDOWS.
REMOVE EXTERIOR BRICK LATTICE AND INSTALL NEW 3 1/2" X 3 1/2" X 1/4" STEEL ANGLE LINTEL AT OPENINGS (NEW 16" WIDE M.O.)

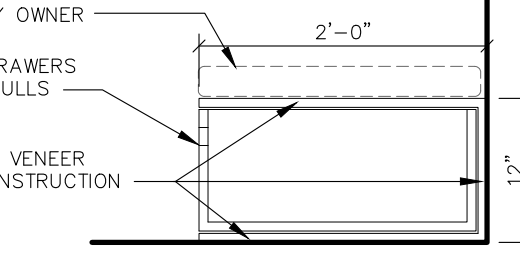
UPPER LEVEL ROOM FINISH SCHEDULE:

No.	Room Name	Floor	Material	Finish	Base	Walls	Material	Finish	Ceiling	Material	Finish	Height	Remarks
100	New Entry Vestibule	Concrete	Sheet vinyl	Rubber	XGWB/Brick	Paint	GWB	Paint	8'-6"	Exist	Exist	8'-6"	Existing brick wall (prev. exterior)
101	Storeroom				N/E XGWB				Exist	Exist	Exist	8'-6"	Open to exist. clg.
102	Mechanical				N/E XGWB				Exist	Exist	Exist	10'-0"	Open to exist. clg.
103	Infants				N/E XGWB				Exist	Exist	Exist	8'-0"	
104	Barrier-Free Washroom				X GWB				Exist	Exist	Exist	8'-0"	
105	Infant Washroom				N/E XGWB				Exist	Exist	Exist	8'-0"	
106	Office				N/E XGWB				Exist	Exist	Exist	8'-0"	
107	Gathering Room				N/E XGWB				Exist	Exist	Exist	8'-0"	
108	Janitor				XGWB				Exist	Exist	Exist	8'-0"	
109	Existing Stair				Ex. GWB				Exist	Exist	Exist	8'-0"	
110	Toddler Washroom		Sheet vinyl	Flash cove					GWB			8'-0"	
111	Toddlers		Cork back LVT	Rubber	N/E XGWB				GWB			10'-0"	
112	Hallway								GWB			9'-0"	

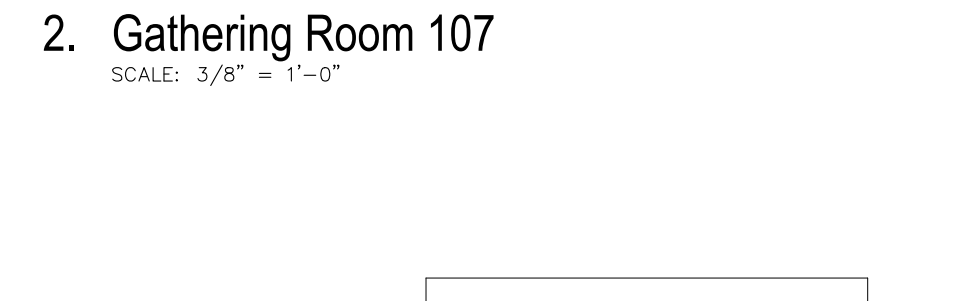
CB: CONCRETE BLOCK GWB: 1/2" GYPSUM WALL BOARD XGWB: 5/8" TYPE "X" GWB N/E: NEW OR EXISTING EX/EXIST: EXISTING



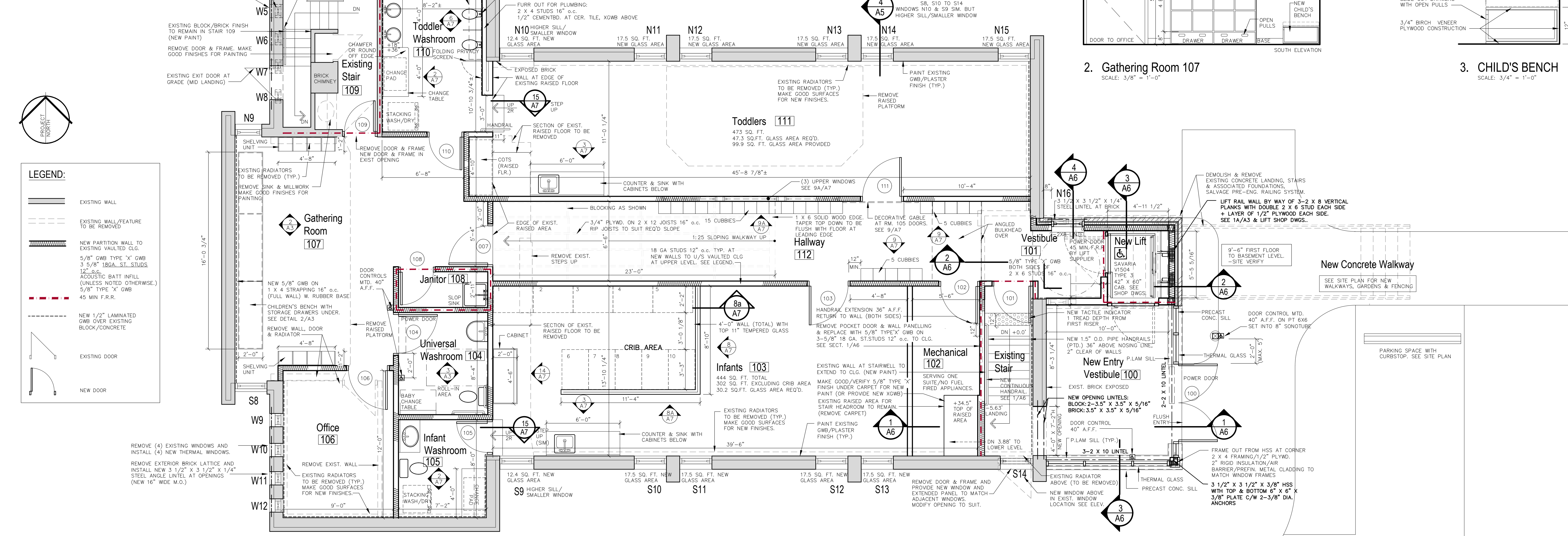
4. SHELVING UNIT SCALE: 3/4" = 1'-0"



3. CHILD'S BENCH SCALE: 3/4" = 1'-0"



2. Gathering Room 107 SCALE: 3/8" = 1'-0"



1. UPPER FLOOR PLAN SCALE: 1/4" = 1'-0"

CHRISTOPHER Z. TWORKOWSKI
ARCHITECT
34 BRIDGE STREET, UNIT 3
LAKEFIELD, ONT. K0L 2H0 705-652-1616

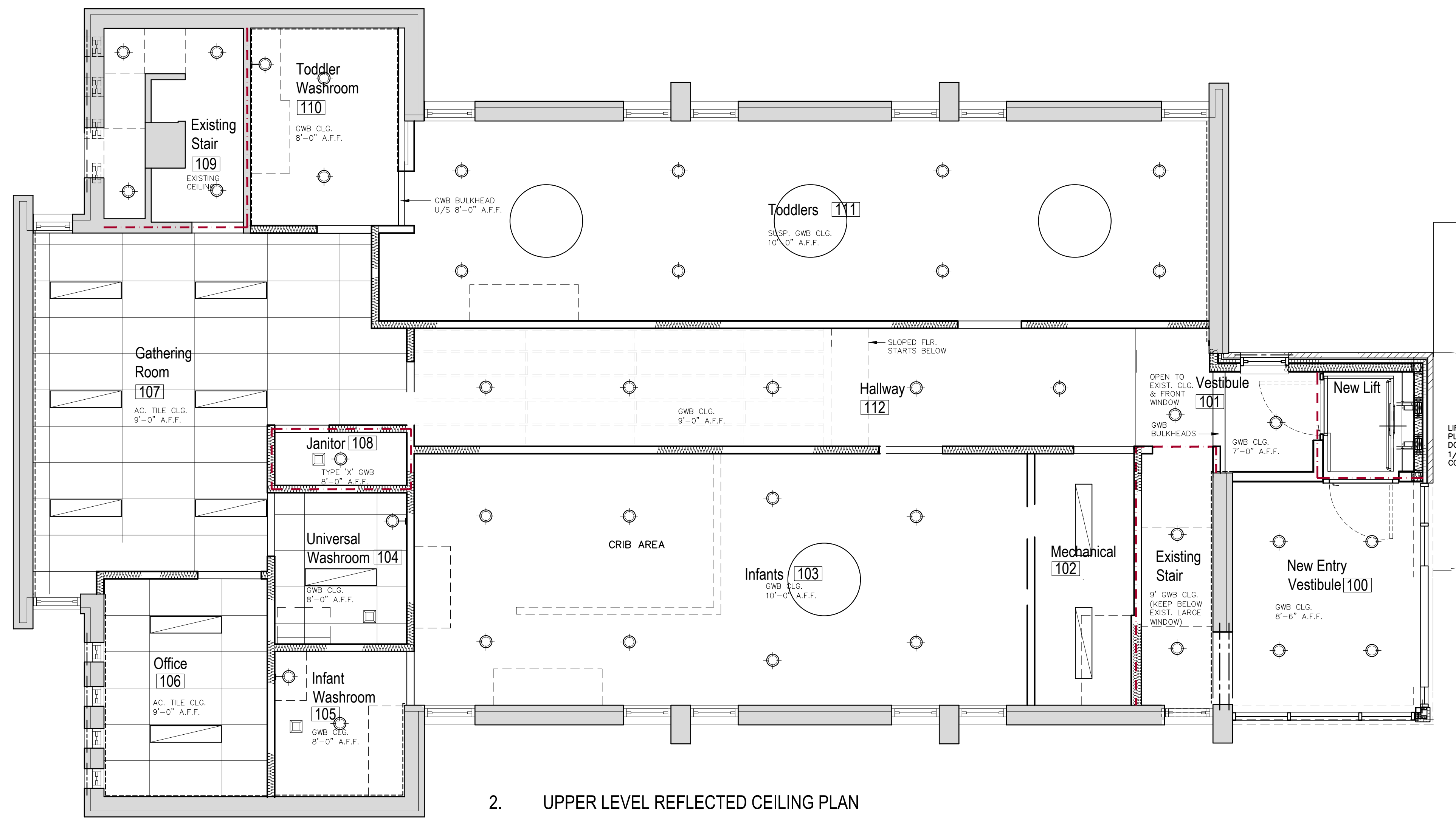
PROJECT TITLE: Saint Albans Nursery Two Childcare
587 MONROE ROAD, PETERBOROUGH, ONTARIO

DATE ISSUED: JAN 7/25
DATE DRAWN: JAN 7/25
DRAWN BY: DRS
CHECKED BY: CJZ
SCALE: AS NOTED
PROJECT No: 2418
SHEET No: A3

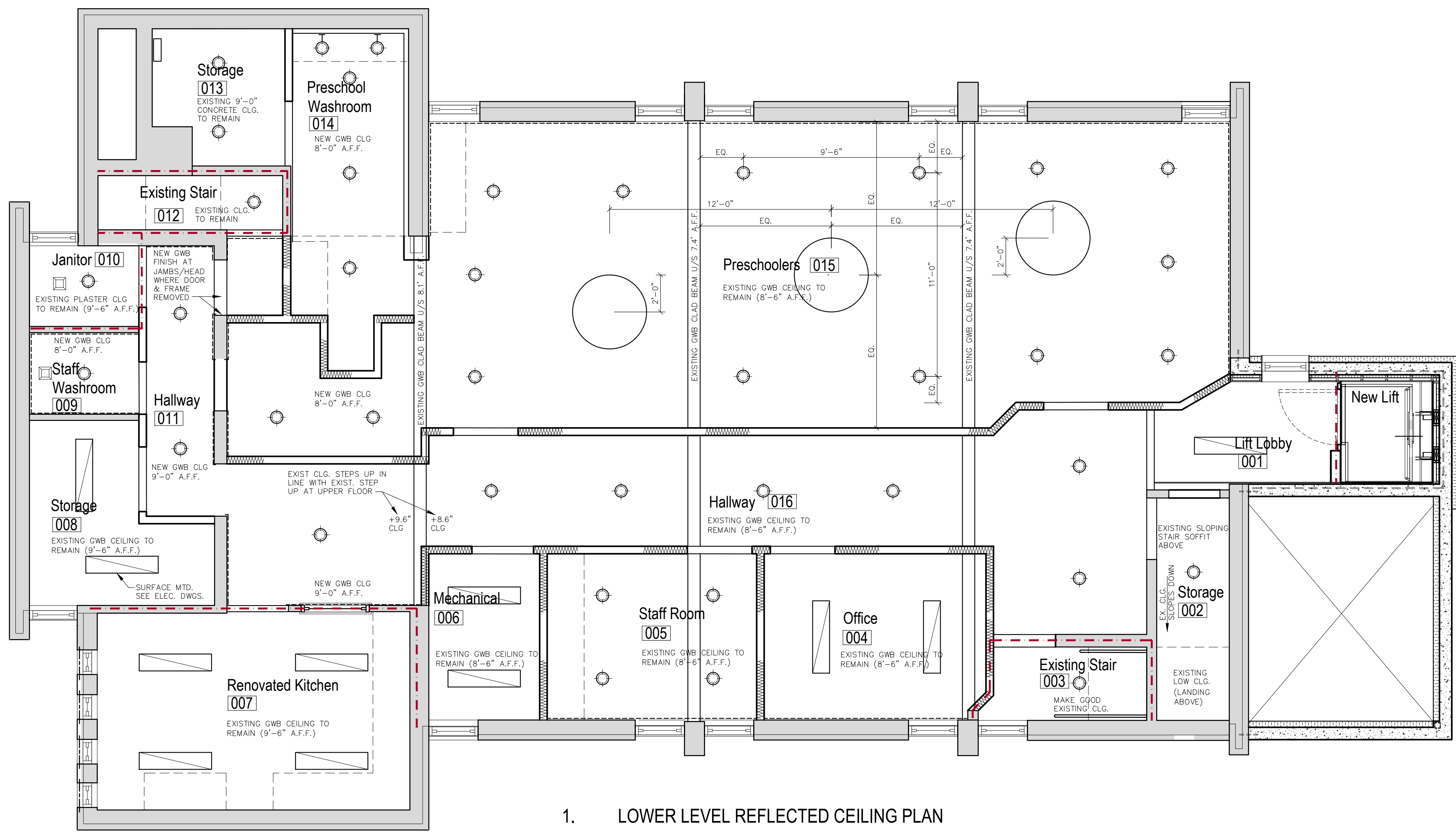
UPPER FLOOR PLAN, SCHEDULES
MILLWORK DETAILS

DESCRIPTION: Issued For Building Permit
DATE: Jan. 8/25
NEW No: 1.
DATE: Jan. 13/25
NEW No: 2.

THE GENERAL CONTRACTOR SHALL VERIFY ALL DIMENSIONS AND REPORT ALL ERRORS AND OMISSIONS TO THE ARCHITECT. THIS DRAWING SHALL NOT BE USED UNTIL SIGNED BY THE ARCHITECT.



2. UPPER LEVEL REFLECTED CEILING PLAN



1. LOWER LEVEL REFLECTED CEILING PLAN

REV. No.	DATE	DESCRIPTION
1.	Jan. 8/25	Issued For Building Permit
2.	Jan. 13/25	Issued For Tender

THE GENERAL CONTRACTOR SHALL VERIFY ALL DIMENSIONS AND REPORT ALL ERRORS AND OMISSIONS TO THE ARCHITECT IMMEDIATELY. THIS DRAWING SHALL NOT BE USED FOR CONSTRUCTION UNTIL SIGNED BY THE ARCHITECT.

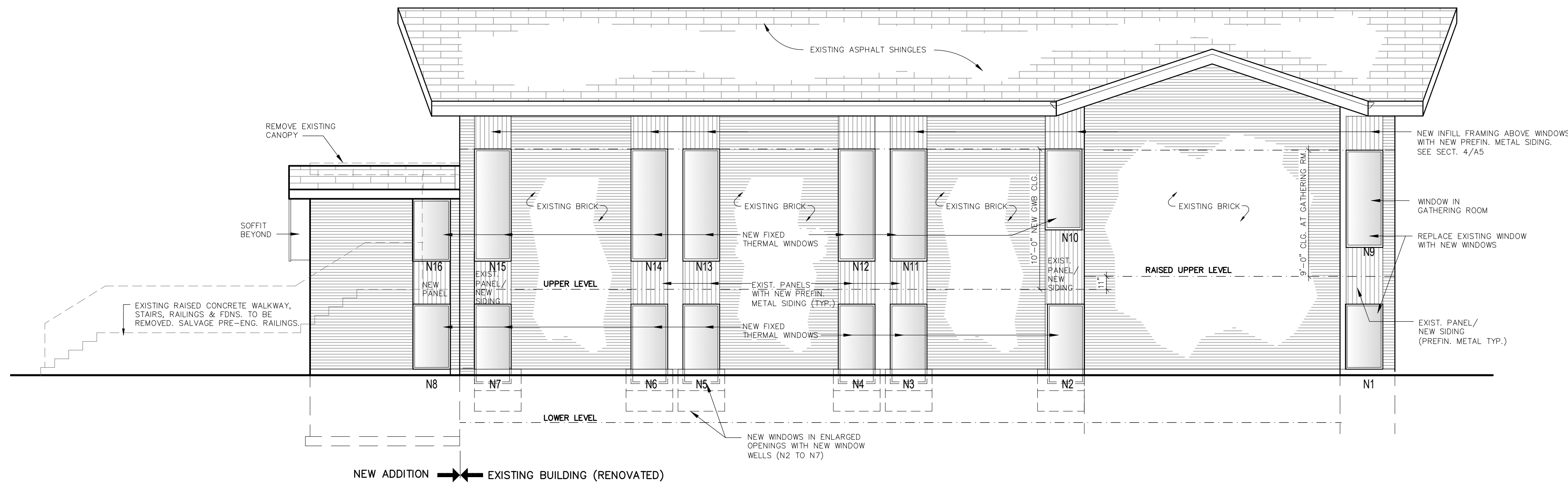
CHRISTOPHER Z. TWORKOWSKI
 ARCHITECT
 34 BRIDGE STREET, UNIT 3
 LAKEFIELD, ONT. K0L 2H0 705-652-1646

PROJECT TITLE
Saint Albans Nursery Two Childcare
 887 MONROGAN ROAD, PETERBOROUGH, ONTARIO
REFLECTED CEILING PLANS

DATE ISSUED: JAN. 7/25
 DATE DRAWN: DRS
 CHECKED BY: CZT
 SCALE: 1/4" = 1'-0"

PROJECT No. **2418**

DET. NO. SHEET NO. **A4**



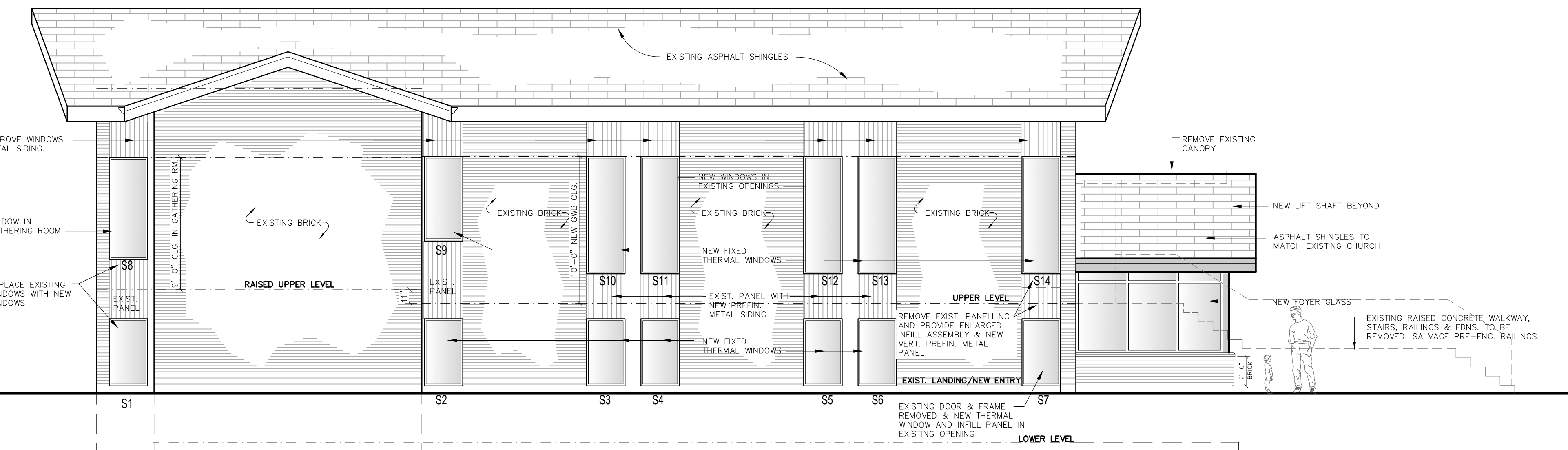
3. NORTH ELEVATION
SCALE: 3/16" = 1'-0"

WINDOW SCHEDULE:

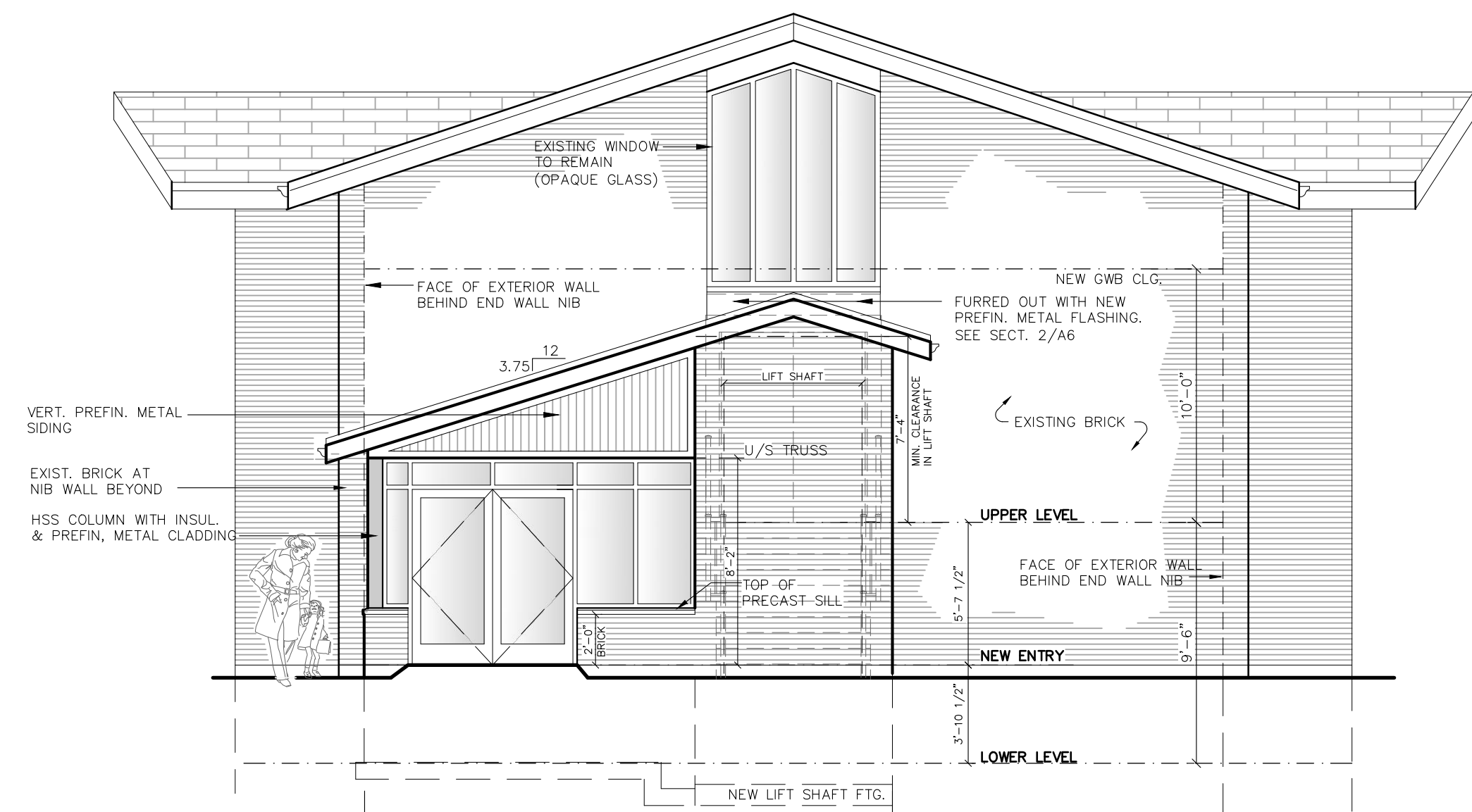
SITE VERIFY R.O. AT EACH WINDOW

WINDOWS TO BE FIXED FIBERGLASS WITH THERMAL GLAZING, SERIES 325 BY INLINE FIBERGLASS LTD. TORONTO ONTARIO OR APPROVED EQUAL. INLINEFIBERGLASS.COM

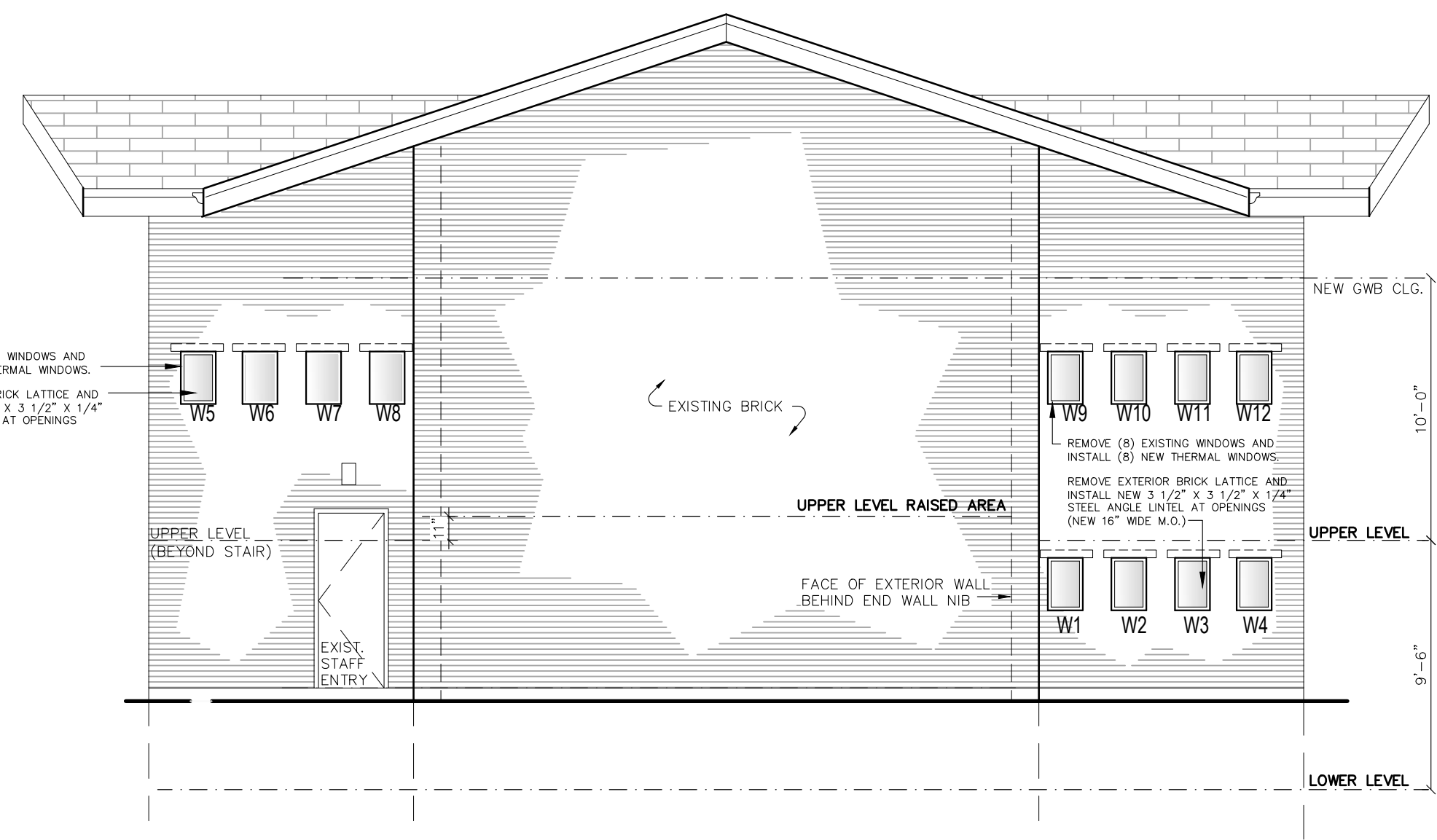
DESIGNATION	R.O. (W X H)
W1 to W12	16" X 24"
N1	32" X 56"
N2 to N7	32" X 68"
N8	32" X 56"
N9	32" X 75"
N10	32" X 70"
N11 to N15	32" X 94"
N16	32" X 48"
S1 to S7	32" X 56"
S8	32" X 75"
S9	32" X 70"
S10 to S14	32" X 94"



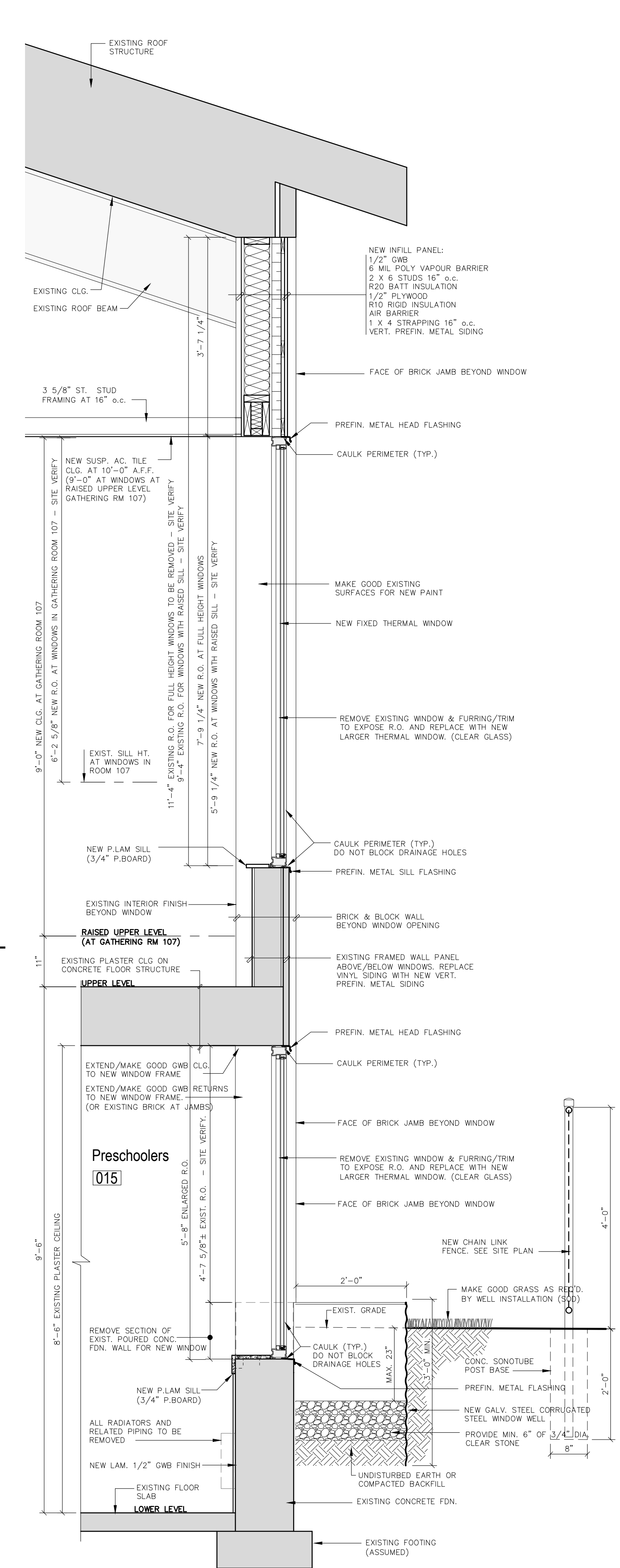
2. SOUTH ELEVATION
SCALE: 3/16" = 1'-0"



1. EAST (FRONT) ELEVATION
SCALE: 3/16" = 1'-0"



1. WEST ELEVATION
SCALE: 3/16" = 1'-0"



4. TYPICAL SECTION at NEW WINDOWS
SCALE: 3/4" = 1'-0"

PROJECT TITLE	Saint Albans Nursery Two Childcare	
	587 MONROE ROAD, PETERBOROUGH, ONTARIO	
PROJECT No.	2418	
	SHEET No.	
DATE ISSUED	JAN 7/25	
	DATE DRAWN	
DRAWN BY	DRS	
	CHECKED BY	
SCALE	AS NOTED	
	PROJECT No.	
DET. NO. SHEET NO.	A5	
	SHEET No.	

CHRISTOPHER Z. TWORKOWSKI
ARCHITECT
34 BRIDGE STREET, UNIT 3
LAKEFIELD, ONT. K0L 2H0 705-652-1646

SECTION at LOWER LEVEL WINDOWS
BUILDING ELEVATIONS

DATE ISSUED: JAN 7/25
DATE DRAWN: [blank]
DRAWN BY: DRS
CHECKED BY: CZT
SCALE: AS NOTED
PROJECT No.: 2418
SHEET No.: A5

