

GENERAL NOTES

1. MAKE GOOD ALL FINISHES WHICH HAVE BEEN ALTERED DUE TO RENOVATIONS.
2. ALL WORK TO MEET OR EXCEED O.B.C. STANDARDS.

WALL LEGEND

SYMBOL	DESCRIPTION
	EXISTING WALLS TO BE REMOVED
	EXISTING WALLS TO BE RETAINED
	NEW CONC. BLOCK WALL (3000)
	CONC. BLOCK WALL TO 1/2 OF EX. DECK (3402±)

- EX. DOOR
- NEW DOOR

CODE STEEL LINTEL SCHEDULE (MIN. SIZE)

L-1	2 - 102 x 102 x 9.5 (4" x 4" x 3/8") WELDED TOGETHER
L-2	127 x 127 x 6.4 (5" x 5" x 1/2")

- SHORTFORMS:**
- PT = PAINT
 - C.T. = CERAMIC TILE
 - TERR = TERRAZZO
 - A.T. = ACOUSTIC TILE
 - V.T. = VINYL TILE
 - V = VINYL
 - HT = HEIGHT
 - F.D. = FLOOR DRAIN
 - RC = RADIUS CORNER
 - S.S. = STAINLESS STEEL

FOR TENDER & PERMIT: FEB 26, 2005

ISSUED: DATE:

THIS DRAWING IS COMPLIMENTARY & MUST BE READ IN CONJUNCTION WITH ALL THE OTHER DRAWINGS AND/OR SPECIFICATIONS. REPORT ANY INCONSISTENCIES TO THE ARCHITECT.

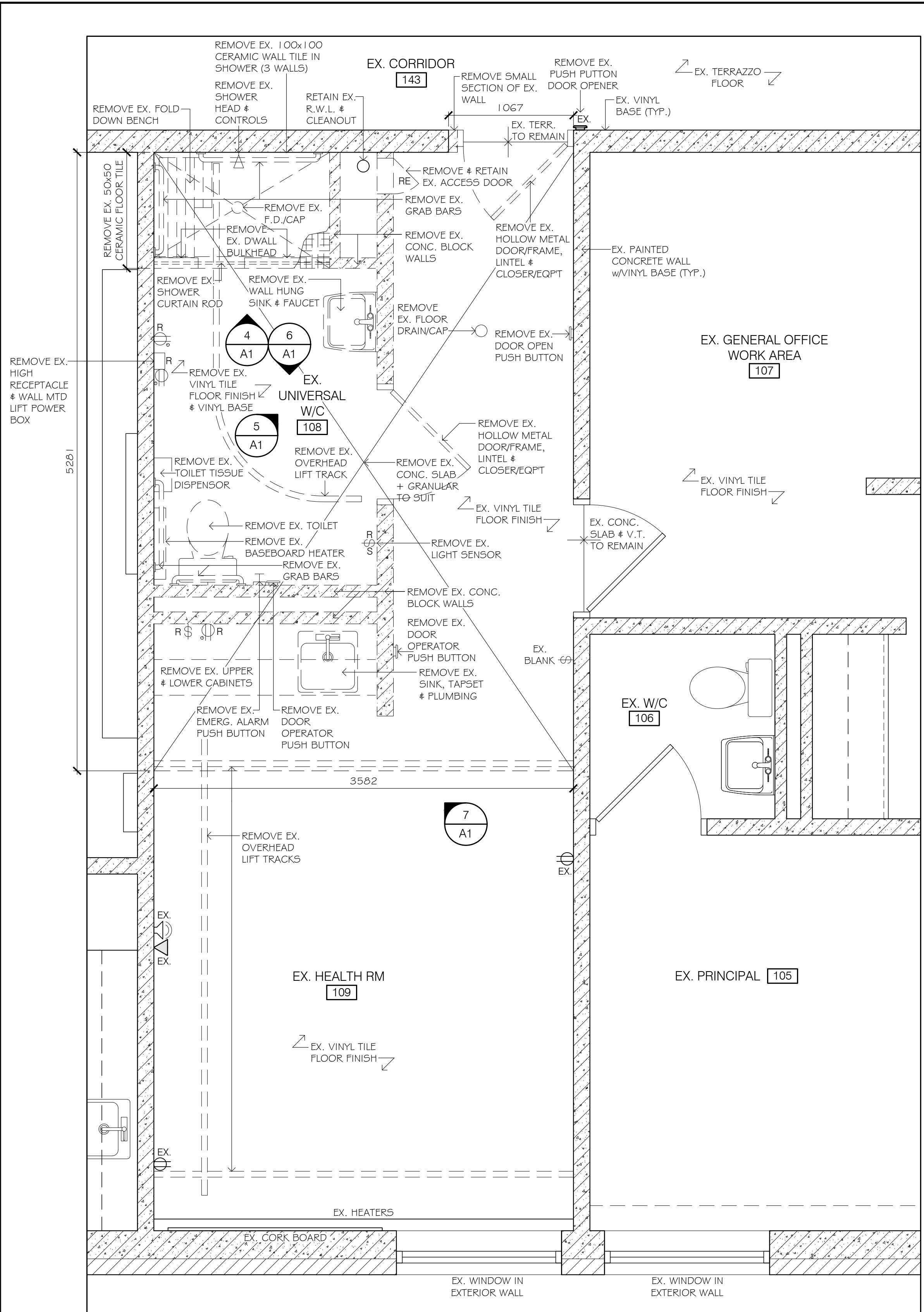
PROJECT: P.V.N.C.C.D.S.B. ST. JOSEPH C.E.S. COBOURG - UNIVERSAL W/C IMPROVEMENTS

919 D'ARCY ST., COBOURG, ONTARIO K9A 4B4

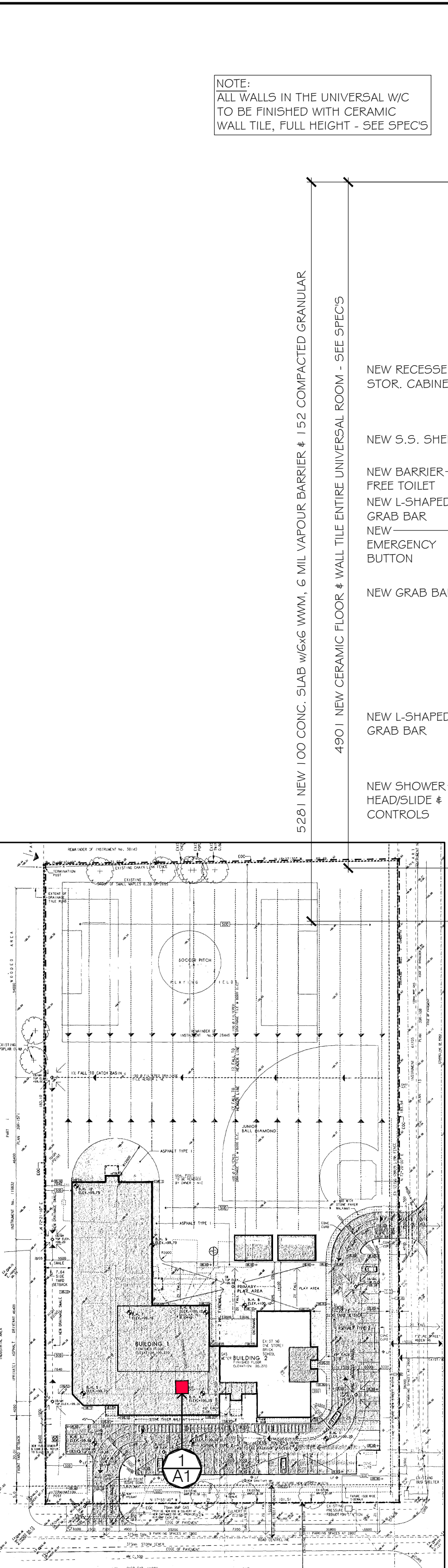
DRAWING TITLE: EX. MAIN FLOOR PLANS DEMOLITION & NEW WORK

SCALE: AS NOTED DRAWING NUMBER: **A1**

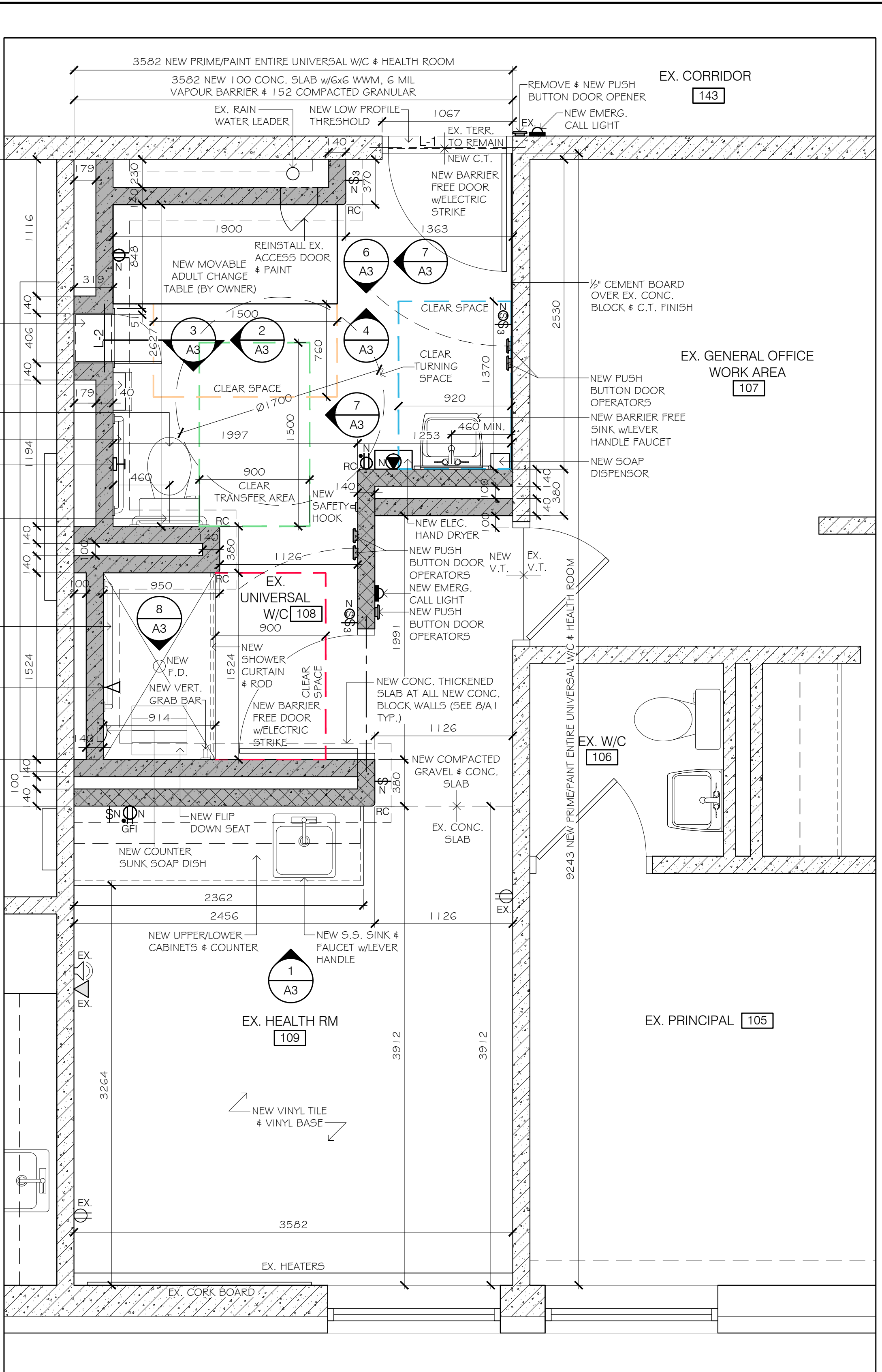
CHECKED BY: GW OF 3
2405G



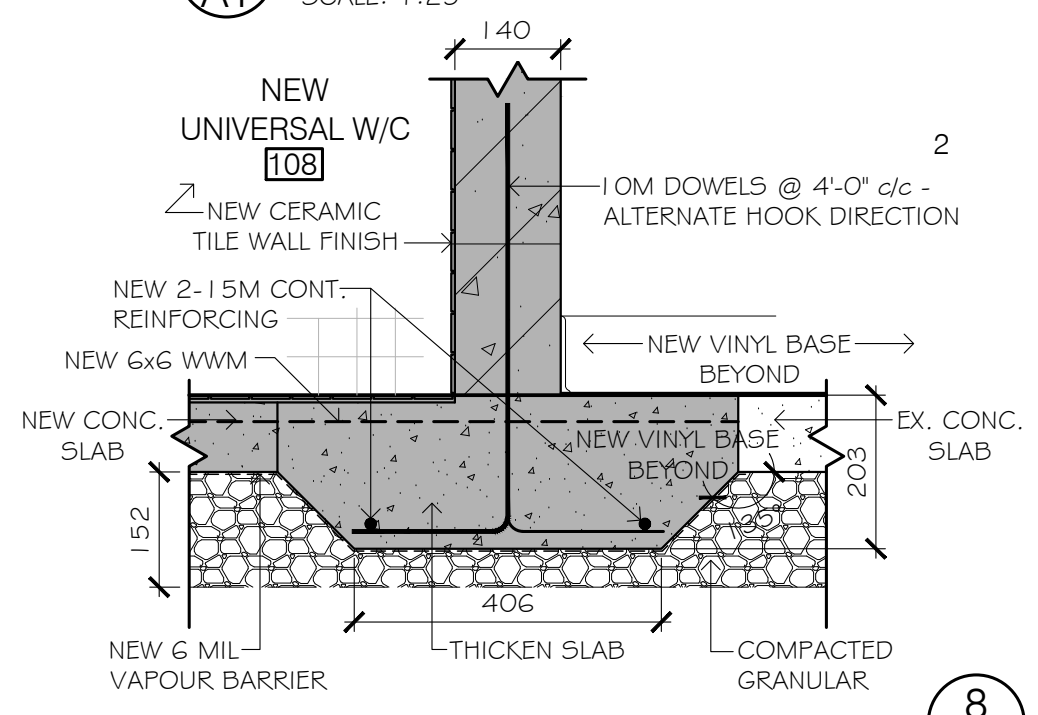
1 MAIN FLOOR PLAN - DEMOLITION
 SCALE: 1:25



2 SITE LOCATION PLAN
 SCALE: N.T.S.



3 MAIN FLOOR PLAN - NEW WORK
 SCALE: 1:25



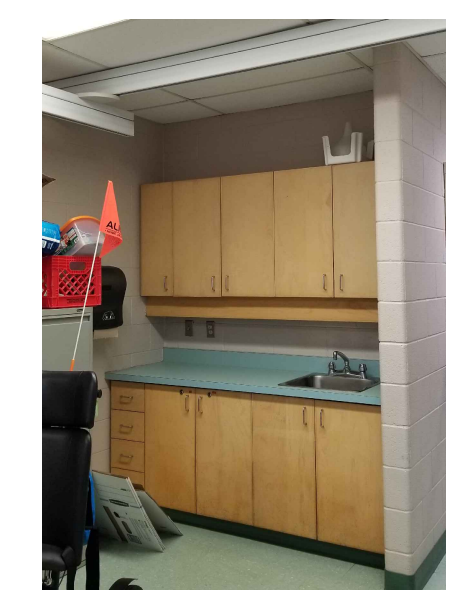
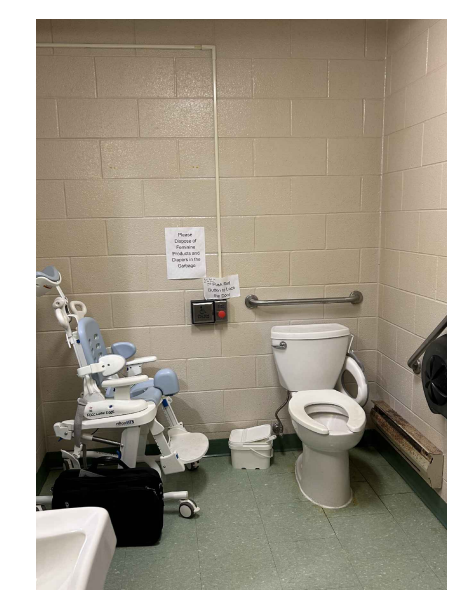
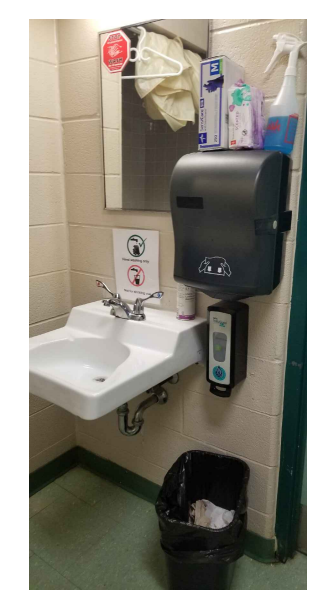
8 PHOTO - EX. KITCHENETTE
 SCALE: N.T.S.

4 PHOTO - EX. SHOWER
 SCALE: N.T.S.

5 PHOTO - EX. SINK
 SCALE: N.T.S.

6 PHOTO - EX. TOILET
 SCALE: N.T.S.

7 PHOTO - EX. KITCHENETTE
 SCALE: N.T.S.



ELEC'L & LIGHTING LEGEND

SYMBOL	DESCRIPTION
	EX. 304 x 1219 LIGHT FIXTURE (DEMO)
	NEW 304 x 1219 LIGHT FIXTURE
	NEW CAB. UNDER MOUNT LIGHT FIXTURE
	POT LIGHTS
	VAPOUR PROOF SHOWER POT LIGHT
	AIR SUPPLY GRILLE
	EX. FLUSH MT. METAL ACCESS PANEL - SIZE VARIES
	SURFACE MTD SMOKE DETECTORS
	SURFACE MTD HEAT DETECTOR
	RECEPTACLE
	RECEPTACLE - ABOVE COUNTER
	TELEPHONE
	LIGHT SWITCH
	3 WAY LIGHT SWITCH w/SENSOR
	P/A

EX = EXISTING
 RE = RELOCATE
 R = REMOVE
 N = NEW

FOR TENDER & PERMIT: FEB 26, 2005
 ISSUED: DATE:

THIS DRAWING IS COMPLIMENTARY & MUST BE READ IN CONJUNCTION WITH ALL THE OTHER DRAWINGS AND/OR SPECIFICATIONS. REPORT ANY INCONSISTENCIES TO THE ARCHITECT.

PROJECT:
**PVNCDSB ST. JOSEPH C.E.S.
 COBOURG - UNIVERSAL W/C
 IMPROVEMENTS**

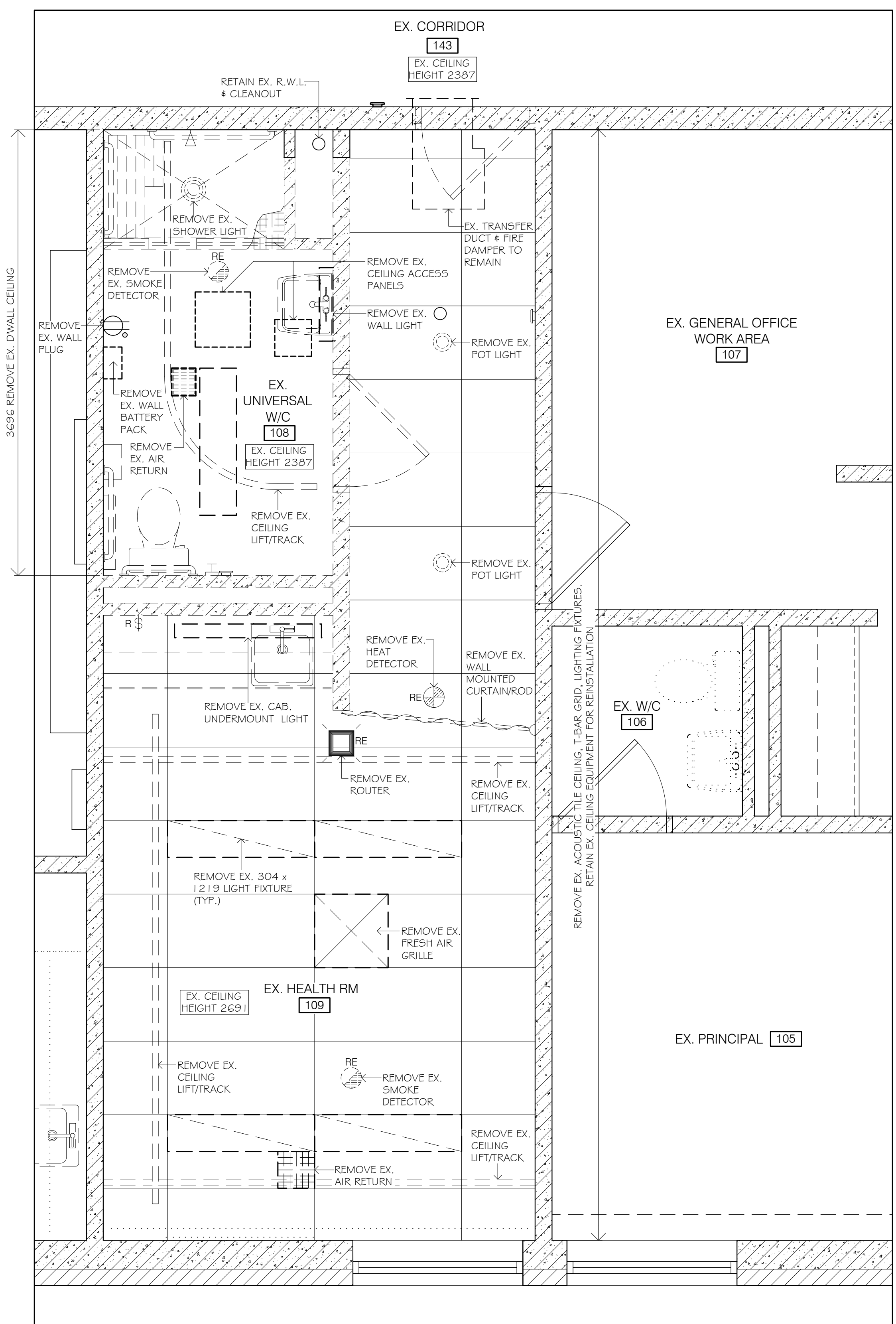
919 D'ARCY ST., COBOURG, ONTARIO K9A 4B4

DRAWING TITLE:
**EX. & NEW REFLECTED
 CEILING PLANS**

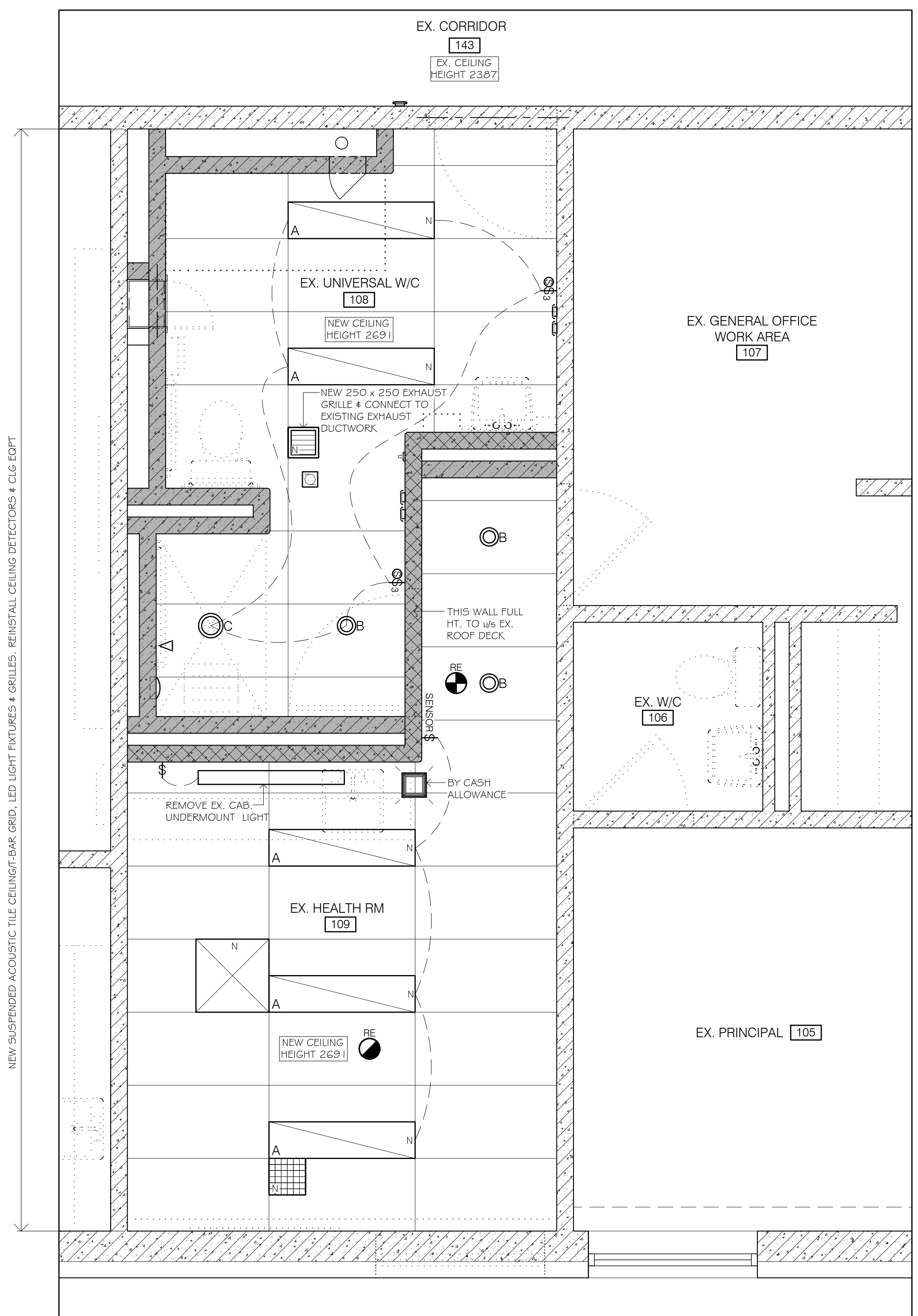
SCALE: A5 NOTED DRAWING NUMBER:

DRAWN BY: SV
 CHECKED BY: GW

A2
 OF 3
 2405G



1 REFLECTED CEILING PLAN - DEMOLITION
 SCALE: 1:25
 MAKE GOOD ALL SURFACES DAMAGED BY REMOVALS



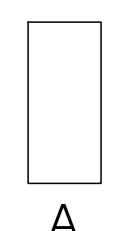
2 REFLECTED CEILING PLAN - NEW WORK
 SCALE: 1:25

NEW DOOR SCHEDULE (ALL ITEMS ARE NEW U.O.N.)

Door No.	DOOR			FRAME			COMMENTS
	SIZE	TYPE	MATERIAL FINISH	TYPE	MATERIAL FINISH		
1	965 x 2132 mm	A	H.M. PT	A	H.M. PT		CLOSER - 3/4 HR FIRE RATED
2	965 x 2132 mm	A	H.M. PT	A	H.M. PT		CLOSER - 3/4 HR FIRE RATED

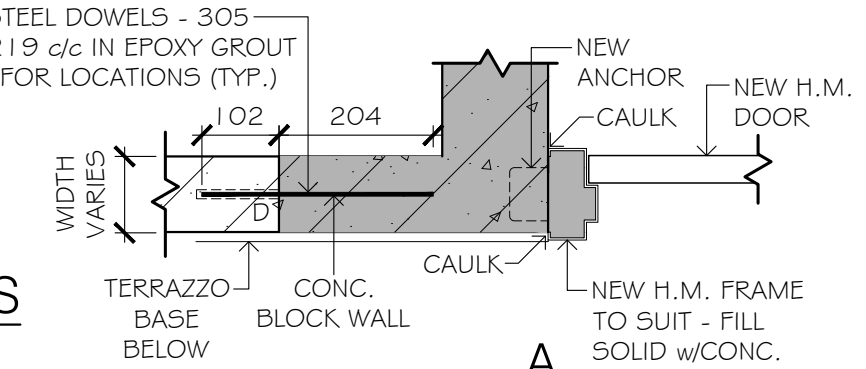
CONFIRM DOOR HEIGHT
 - TO MATCH EXISTING ON SITE

DOOR TYPES



FRAME TYPE ELEVATIONS

DOOR FRAMES

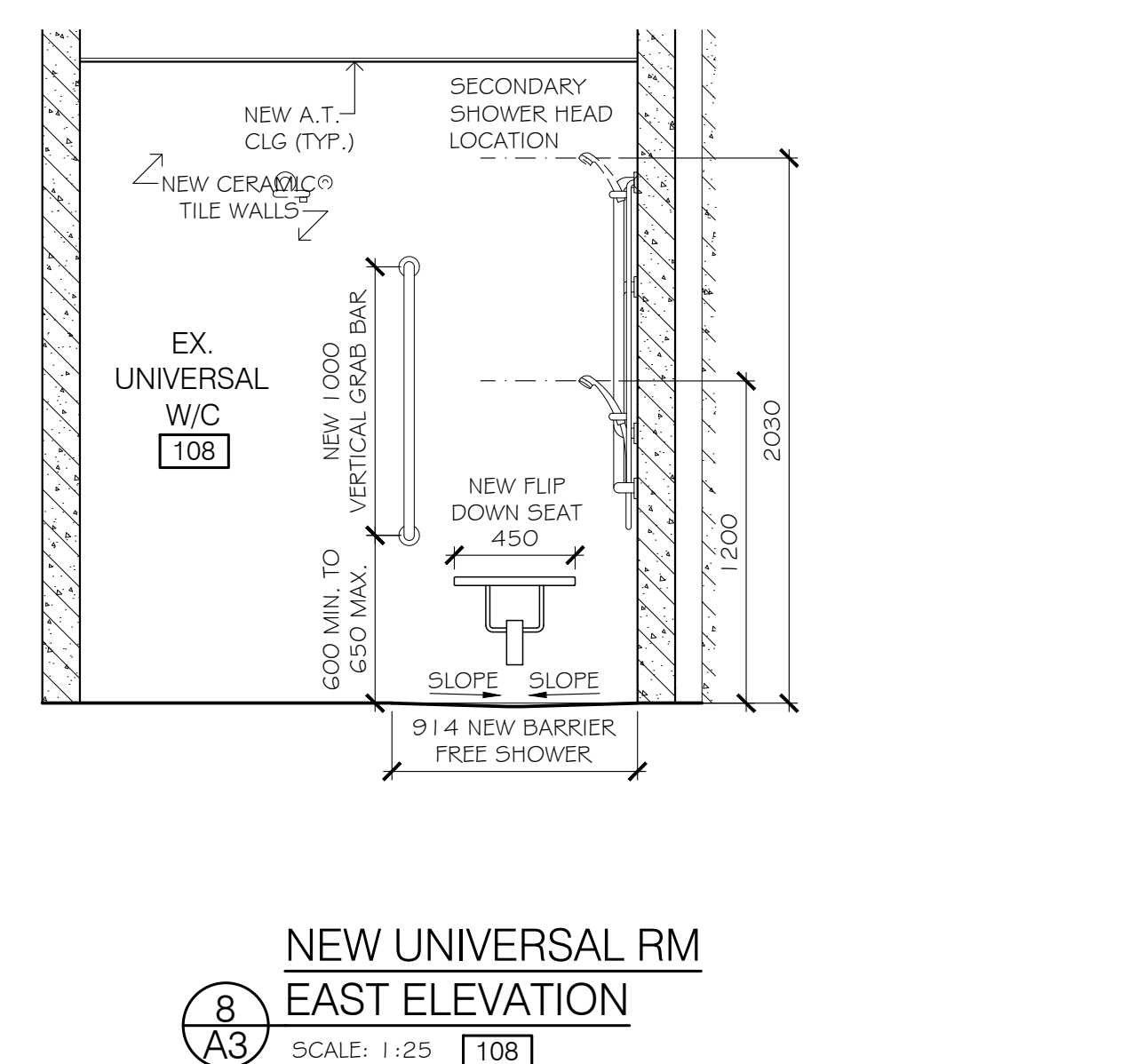
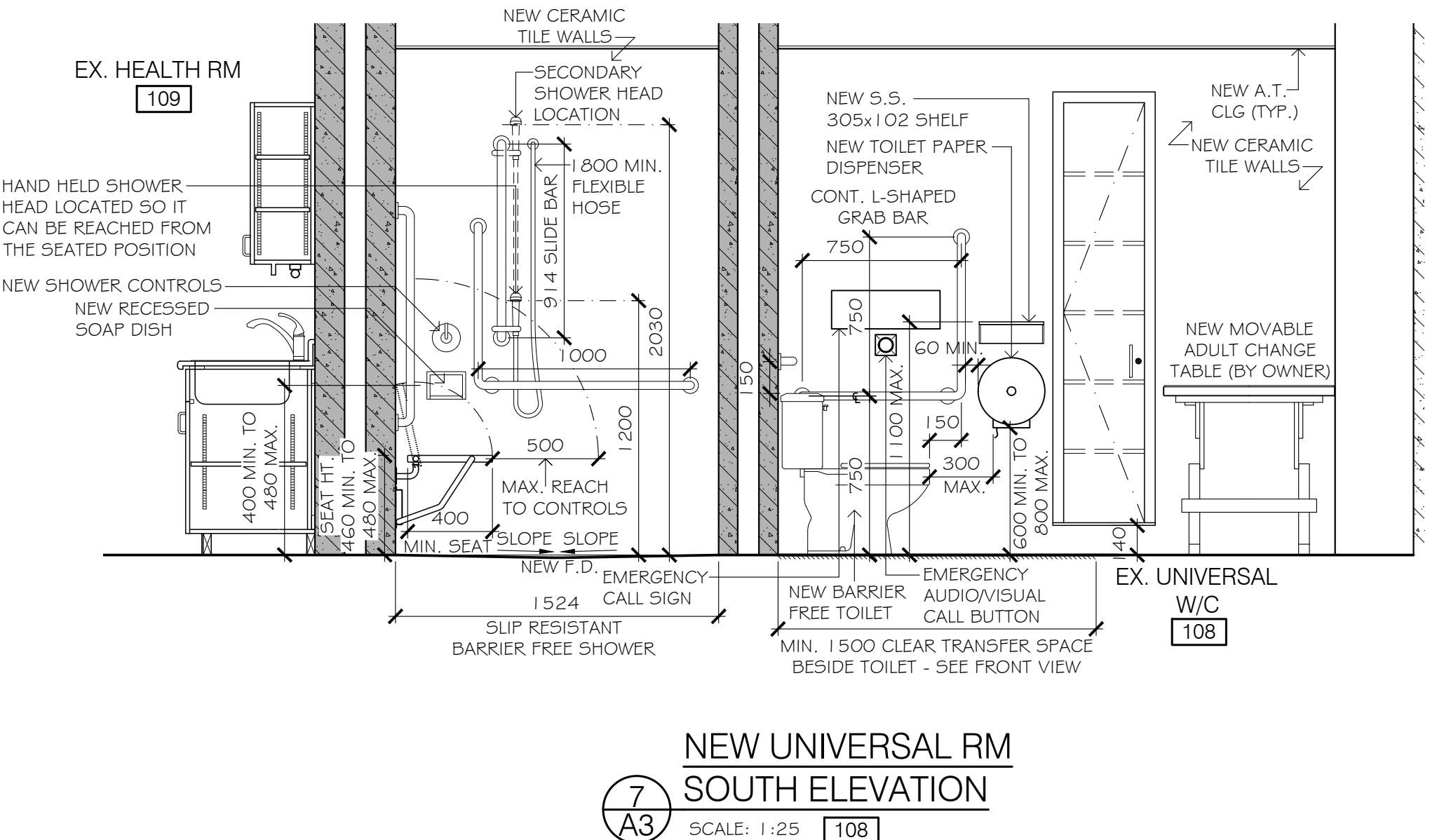
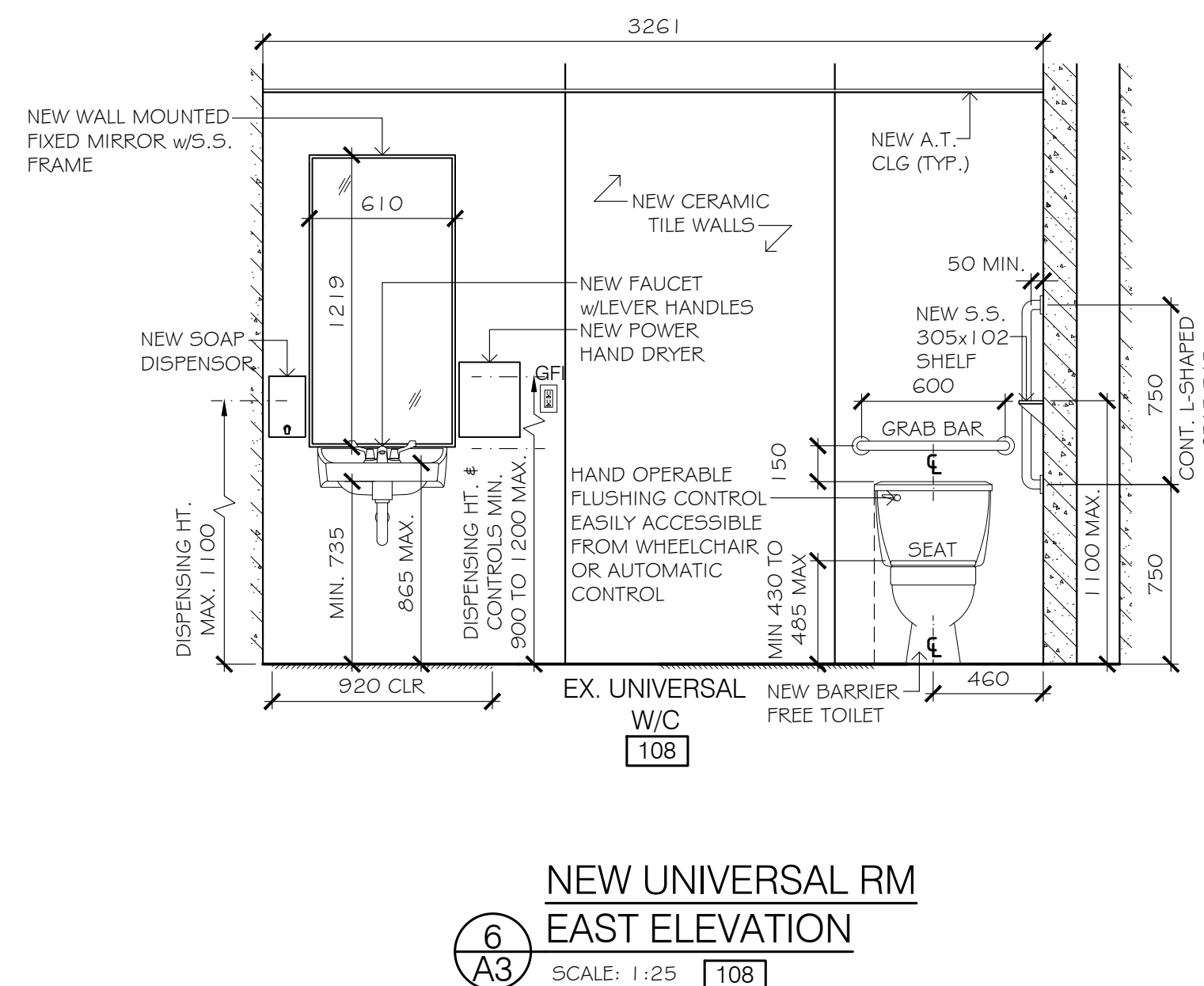
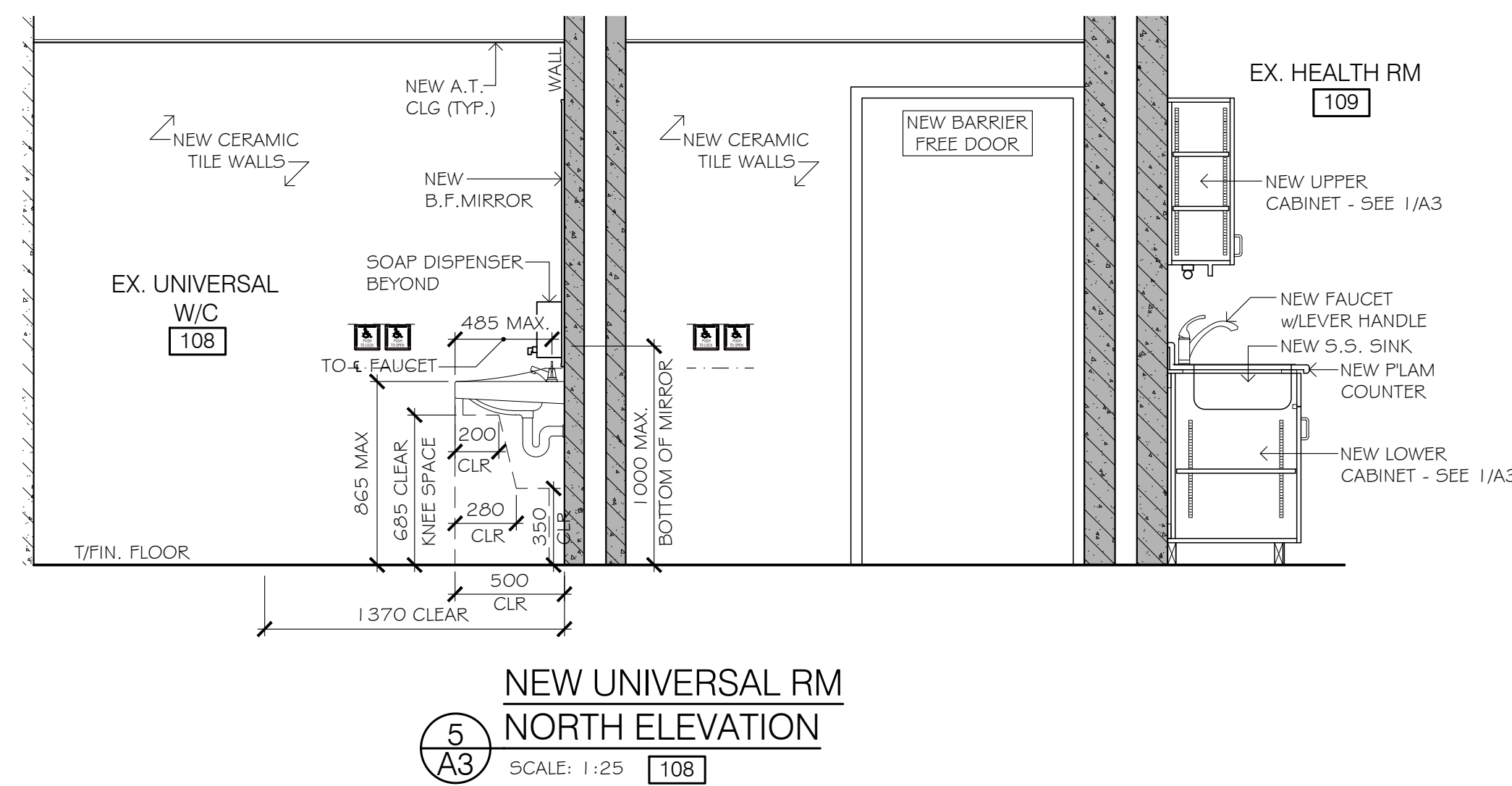
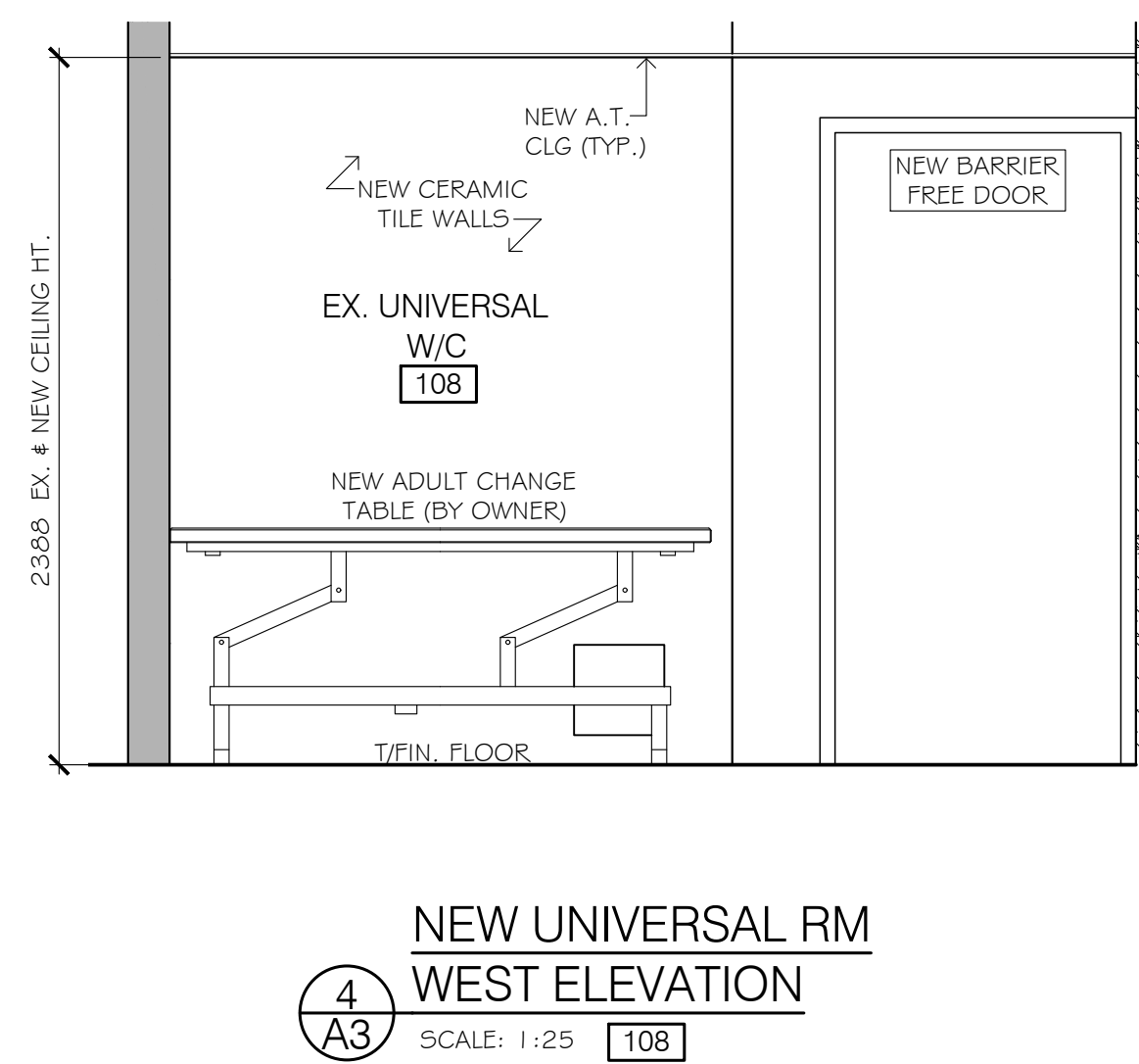
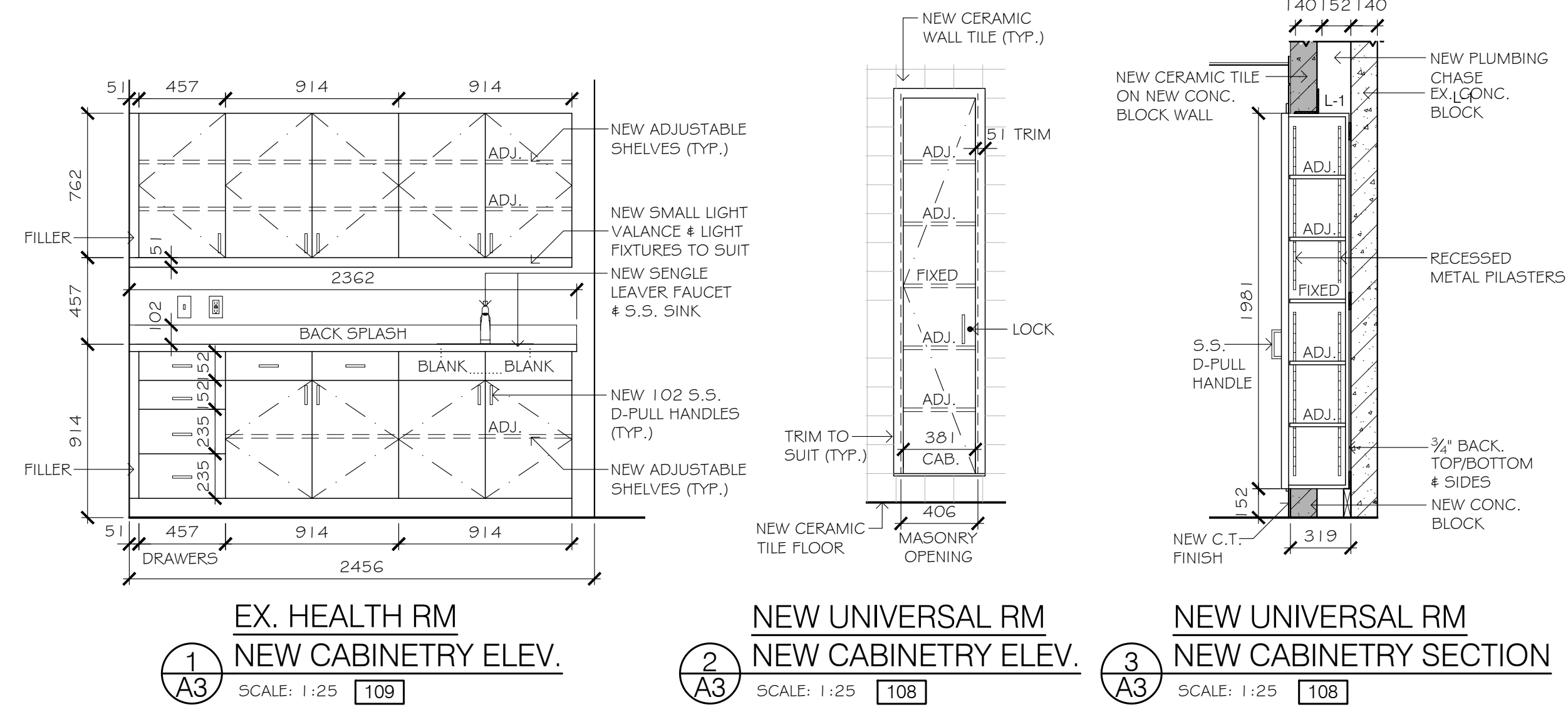


GENERAL NOTES FOR UNIVERSAL WASHROOM: (ALL FIXTURES TO BE BARRIER FREE U.O.N.)

- LAVATORIES**
- WATER SUPPLY TEMPERATURE TO BE SET AT MAX. 43°C OR INSULATE PIPES WHERE THEY WOULD OTHERWISE PRESENT A BURN HAZARD.
 - FAUCETS TO HAVE LEVER TYPE HANDLES WITHOUT SPRING LOADING OR MUST OPERATE AUTOMATICALLY.
- WATER CLOSETS**
- EQUIP WITH A BACK SUPPORT WHERE THERE IS NO SEAT LID OR TANK.
- SHOWER**
- PROVIDE A PRESSURE EQUALIZING OR THERMOSTATIC MIXING VALVE CONTROLLED BY A LEVER OR OTHER DEVICE OPERABLE USING A CLOSED FIST FROM A SEATED POSITION. HAND HELD SHOWER HEAD WITH NO LESS THAN 1800mm FLEXIBLE HOSE REACHABLE FROM THE SEAT POSITION.
- ACCESSORIES**
- SOAP DISPENSER (LAVATORY)**
- MUST OPERATE AUTOMATICALLY & SINGLE HAND OPERABLE AND REACHABLE FROM A SITTING POSITION.
- TOWEL DISPENSER or HAND DRYING EQPT/RECEPTACLE (SINGLE HAND OPERABLE).** CHOICE TO BE CONFIRMED BY OWNER
- GRAB BARS**
- GRAB BARS SHALL BE MIN. 35 AND 40 MAX. IN DIAMETER, BE MIN. 38mm & MAX. 50mm FROM THE WALL TO THE INSIDE SURFACE OF THE GRAB BAR, HAVE A SLIP RESISTANT SURFACE AND BE SECURELY ANCHORED TO RESIST A LOAD OF AT LEAST 1.3kN APPLIED VERTICALLY OR HORIZONTALLY. COORDINATE w/GENERAL CONTRACTOR TO PROVIDE WALL SUPPORT AS REQUIRED.
 - SAFETY COAT HOOK
 - PROJECTING NO MORE THAN 50 FROM WALL.
- RECESSED SOAP DISH**
- REACHABLE FROM THE FLIP DOWN SHOWER SEAT POSITION. SEE DWGS FOR LOCATION.
- TOILET PAPER DISPENSER**
- LOCATE BELOW GRAB BAR WHERE POSSIBLE w/THE CLOSEST EDGE OF THE DISPENSER 300 FROM FRONT OF WATER CLOSET SEAT AND THE BOTTOM OF THE DISPENSER 600mm MIN. TO 800mm ABOVE FINISHED FLOOR.
- PROVIDE ADEQUATE BLOCKING IN FRAME PARTITIONS WALLS FOR SUPPORT OF ALL FIXTURES. LOCATE COAT HOOK ON WASHROOM WALL @ MAX. 1200mm ABOVE FINISHED FLOOR PROJECTING MAX. 50 FROM WALL.
 - DOOR MUST BE CAPABLE OF BEING LOCKED FROM THE INSIDE AND RELEASED FROM THE OUTSIDE IN CASE OF EMERGENCY. IT MUST HAVE A GRASPABLE LATCH OPERATING MECHANISM LOCATED NO LESS THAN 900 AND MAX. 1100 ABOVE FIN. FLOOR.
 - DOOR CLOSER w/SPRING HINGES OR GRAVITY HINGES WITH A CLOSING PERIOD OF NO LESS THAN 3 SECONDS FROM WHEN THE DOOR IS IN AN OPEN POSITION OF 70° TO THE DOORWAY, TO WHEN THE DOOR REACHES A POINT 75mm FROM THE CLOSED POSITION, MEASURED FROM THE LEADING EDGE OF THE LATCH SIDE OF THE DOOR.
 - ACCESSIBILITY SIGN FOR BARRIER FREE WASHROOM LOCATED AT W/C ENTRY DOOR BETWEEN 1200 & 1500 A.F.F.
 - POWER DOOR OPERATOR WITH SIGN INCORPORATING THE INTERNATIONAL SYMBOL OF ACCESS. LOCATE ON LATCH SIDE AND OPERABLE USING A CLOSED FIST. DOOR OPENING DEVICE (CONTROLS) TO BE MOUNTED MIN. 900mm TO MAX. 1100mm ABOVE FINISHED FLOOR. LOCATE NO LESS THAN 600mm AND NO MORE THAN 1500mm BEYOND THE DOOR SWING WHERE THE DOOR OPENS TOWARD THE CONTROL.
 - THE CONTROLS FOR THE POWER DOOR OPERATOR SHALL HAVE A FACE DIMENSION NO LESS THAN 150 Ø IF CIRCULAR OR 50x100 WHERE RECTANGULAR.
 - PROVIDE AN EMERGENCY CALL SYSTEM THAT CONSISTS OF AUDIBLE AND VISUAL SIGNAL DEVICES INSIDE & OUTSIDE OF THE WASHROOM THAT ARE ACTIVATED BY A CONTROL DEVICE INSIDE THE WASHROOM AND AN EMERGENCY SIGN THAT CONTAINS THE WORDS IN THE EVENT OF AN EMERGENCY PUSH EMERGENCY BUTTON AND AUDIBLE AND VISUAL SIGNAL WILL ACTIVATE. IN LETTERS AT LEAST 25 HIGH WITH A 5 STROKE AND THAT IS POSTED ABOVE THE EMERGENCY BUTTON.
 - PROVIDE LIGHTING CONTROLLED BY A MOTION SENSOR AS PER O.B.C. FOR UNIVERSAL - SEE ELEC1.

TYPICAL CABINETRY NOTES:

- CABINET/COUNTER FINISH/COLOR: * EDGE PROFILE TO BE CONFIRMED BY OWNER.
- ALL SHELVES TO BE 3/4" & FULLY ADJUSTABLE U.O.N. w/METAL PILASTERS COUNTERSUNK IN SIDES OF CABINETS (FACE FLUSH) & ADJUSTABLE METAL SHELF BRACKETS.
- ALL EXPOSED OPEN SHELVES IN CABINETS TO BE FINISHED GRADE.
- DOOR/DRAWER PULLS TO BE STAINLESS STEEL U.O.N. DRAWER HARDWARE TO BE FULL EXTENSION, SOFT CLOSE & DOOR HARDWARE TO BE SOFT CLOSE.
- ALL EXPOSED FINISH ENDS, PANELS, FILLERS TO HAVE MATCHING CABINET FINISH. TOEKICK TO HAVE MATCHING CABINET FINISH OR AS PER SPECIFICATIONS.
- ALL DOOR & DRAWER FRONTS TO BE 3/4". DRAWER BOTTOMS & BACKS TO BE 1/2".
- COUNTERTOPS TO BE POSTFORMED WITH 4" BACK SPLASH & LAMINATE FINISH. PROVIDE ALL COUNTER BUILD UP AS REQUIRED.
- SCRIBE COUNTERTOPS & CLEAR CAULK AT BACKSPLASH.
- SCRIBE FILLERS TO SUIT ADJACENT WALLS.
- CONSTRUCT & INSTALL NEW CABINETS TO INCORPORATE ALL BUILDING SITE CONDITIONS.



FOR TENDER & PERMIT	FEB 26, 2005
ISSUED:	DATE:
THIS DRAWING IS COMPLIMENTARY & MUST BE READ IN CONJUNCTION WITH ALL THE OTHER DRAWINGS AND/OR SPECIFICATIONS. REPORT ANY INCONSISTENCIES TO THE ARCHITECT.	
PROJECT: PVNCCDSB ST. JOSEPH C.E.S. COBOURG - UNIVERSAL W/C IMPROVEMENTS	
919 D'ARCY ST., COBOURG, ONTARIO K9A 4B4	
DRAWING TITLE: EX. & NEW REFLECTED CEILING PLANS	
SCALE: A5 NOTED	DRAWING NUMBER:
DRAWN BY: SV	A3 OF 3 2405G
CHECKED BY: GW	